



## Rabbit Anti-Rab24 antibody

SL3868R

<b>Product Name:</b>	Rab24
<b>Chinese Name:</b>	ras基因相关蛋白Rab24抗体
<b>Alias:</b>	OTTHUMP00000161435; OTTHUMP00000161437; OTTHUMP00000223588; Rab 24; RAB24; RAB24, member RAS oncogene family; RAB24_HUMAN; Ras related protein Rab 24; Ras-related protein Rab-24.
<b>Organism Species:</b>	Rabbit
<b>Clonality:</b>	Polyclonal
<b>React Species:</b>	Human,Mouse,Rat,Pig,Cow,Horse,Rabbit,
<b>Applications:</b>	ELISA=1:500-1000IHC-P=1:400-800IHC-F=1:400-800IF=1:100-500 (Paraffin sections need antigen repair) not yet tested in other applications. optimal dilutions/concentrations should be determined by the end user.
<b>Molecular weight:</b>	23kDa
<b>Cellular localization:</b>	cytoplasmicThe cell membraneMitochondrion
<b>Form:</b>	Lyophilized or Liquid
<b>Concentration:</b>	1mg/ml
<b>immunogen:</b>	KLH conjugated synthetic peptide derived from human Rab24:1-100/203
<b>Lsotype:</b>	IgG
<b>Purification:</b>	affinity purified by Protein A
<b>Storage Buffer:</b>	0.01M TBS(pH7.4) with 1% BSA, 0.03% Proclin300 and 50% Glycerol.
<b>Storage:</b>	Store at -20 °C for one year. Avoid repeated freeze/thaw cycles. The lyophilized antibody is stable at room temperature for at least one month and for greater than a year when kept at -20°C. When reconstituted in sterile pH 7.4 0.01M PBS or diluent of antibody the antibody is stable for at least two weeks at 2-4 °C.
<b>PubMed:</b>	<a href="#">PubMed</a>
<b>Product Detail:</b>	A major contributor to cellular homeostasis is the ability of the cell to strike a balance between the formation and degradation/removal of its cellular components. This process of internal cellular turn-over is called autophagy (self-eating), and is facilitated by a pathway of around 16 interacting proteins in the human. The GTPase Rab24 is thought to be involved in the regulation of vesicular transport associated with autophagy.

**Function:**

May be involved in autophagy-related processes (By similarity).

**Subunit:**

Unlike other Rab family members, does not interact with GDP dissociation inhibitors (GDIs), including ARHGDIA and ARHGDIB. Interacts with ZFYVE20.

**Subcellular Location:**

Cytoplasm, cytosol. Membrane; Lipid-anchor.

**Post-translational modifications:**

Isoprenylation is inefficient compared to other Rab family members.

**Similarity:**

Belongs to the small GTPase superfamily. Rab family.

**SWISS:**

Q969Q5

**Gene ID:**

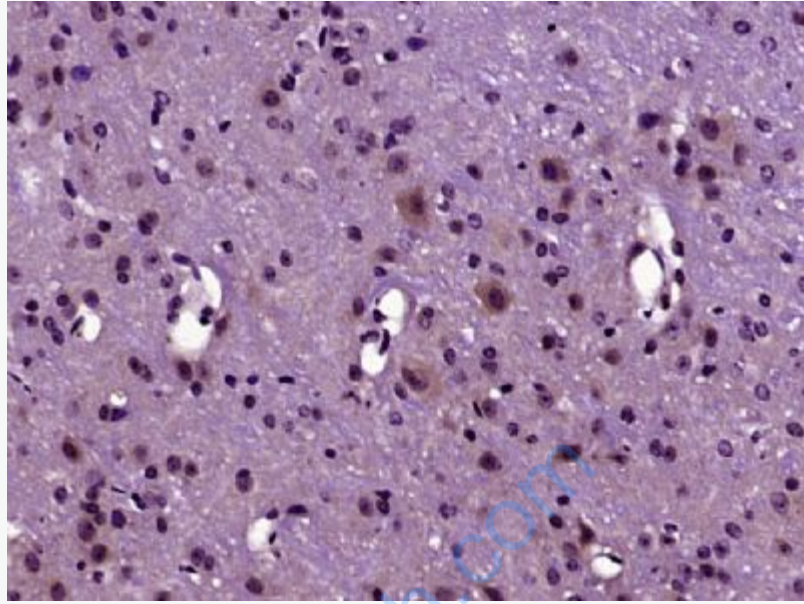
53917

**Database links:**

UniProtKB/Swiss-Prot: Q969Q5.1

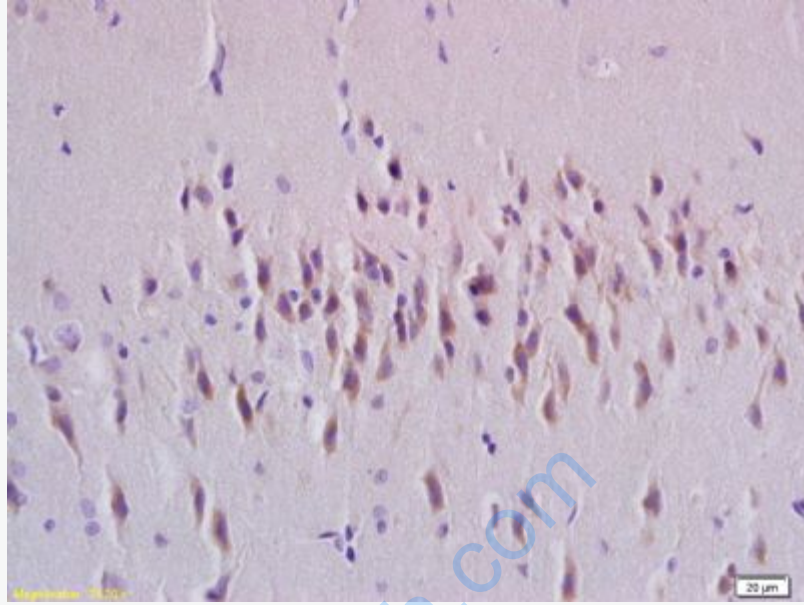
**Important Note:**

This product as supplied is intended for research use only, not for use in human, therapeutic or diagnostic applications.



**Picture:**

Paraformaldehyde-fixed, paraffin embedded (mouse brain tissue); Antigen retrieval by boiling in sodium citrate buffer (pH6.0) for 15min; Block endogenous peroxidase by 3% hydrogen peroxide for 20 minutes; Blocking buffer (normal goat serum) at 37°C for 30min; Antibody incubation with (Rab24) Polyclonal Antibody, Unconjugated (SL3868R) at 1:400 overnight at 4°C, followed by operating according to SP Kit(Rabbit) (sp-0023) instructions and DAB staining.



Tissue/cell: rat brain tissue; 4% Paraformaldehyde-fixed and paraffin-embedded;  
Antigen retrieval: citrate buffer ( 0.01M, pH 6.0 ), Boiling bathing for 15min; Block endogenous peroxidase by 3% Hydrogen peroxide for 30min; Blocking buffer (normal goat serum,C-0005) at 37°C for 20 min;  
Incubation: Anti-Rab24 Polyclonal Antibody, Unconjugated(SL3868R) 1:200, overnight at 4°C, followed by conjugation to the secondary antibody(SP-0023) and DAB(C-0010) staining