

Active Annexin A2 (ANXA2) Instruction Manual

SBPB282Mu01

Mus musculus (Mouse)

Buffer Formulation	PBS, pH7.4, containing 0.01% SKL, 5% Trehalose.
Traits	Freeze-dried powder
Purity	> 97%
Isoelectric Point	7.6
Applications	Cell culture; Activity Assays.

ACTIVITY TEST

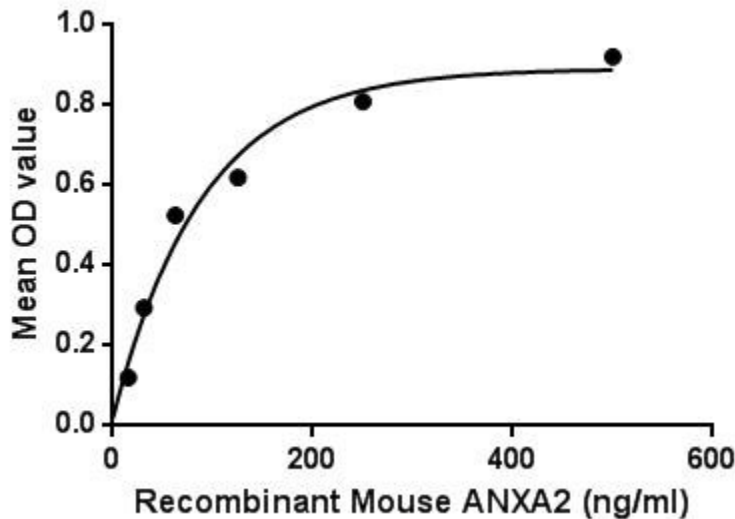


Figure. The binding activity of ANXA2 with S100A10.

Annexin A2 (ANXA2) also known as annexin II is a member of the annexin family. Members of this calcium-dependent phospholipid-binding protein family play a role in the regulation of cellular growth and in signal transduction pathways. This protein functions as an autocrine factor which heightens osteoclast formation and bone resorption. It is a calcium-dependent phospholipid-binding protein whose function is to help organize exocytosis of intracellular proteins to the extracellular domain. Besides, S100 Calcium Binding Protein A10 (S100A10) has been identified as an interactor of ANXA2, thus a binding ELISA assay was conducted to detect the interaction of recombinant mouse ANXA2 and recombinant mouse S100A10. Briefly, ANXA2 were diluted serially in PBS, with 0.01% BSA (pH 7.4). Duplicate samples of 100uL were then transferred to S100A10-coated microtiter wells and incubated for 2h at 37°C. Wells were

washed with PBST and incubated for 1h with anti-ANXA2 pAb, then aspirated and washed 3 times. After incubation with HRP labelled secondary antibody, wells were aspirated and washed 3 times. With the addition of substrate solution, wells were incubated 15-25 minutes at 37°C. Finally, add 50µL stop solution to the wells and read at 450nm immediately. The binding activity of ANXA2 and S100A10 was shown in Figure 1, and this effect was in a dose dependent manner.

USAGE

Reconstitute in 10mM PBS (pH7.4) to a concentration of 0.1-1.0 mg/mL. Do not vortex.

STORAGE

Avoid repeated freeze/thaw cycles. Store at 2-8°C for one month. Aliquot and store at -80°C for 12 months.

STABILITY

The thermal stability is described by the loss rate. The loss rate was determined by accelerated thermal degradation test, that is, incubate the protein at 37°C for 48h, and no obvious degradation and precipitation were observed. The loss rate is less than 5% within the expiration date under appropriate storage condition.

Image

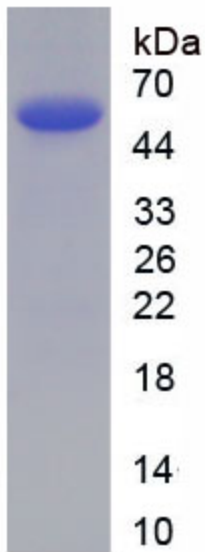


Figure. SDS-PAGE

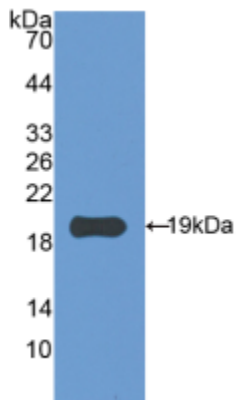


Figure. Western Blot

[IMPORTANT NOTE]

The kit is designed for research use only, we will not be responsible for any issue if the kit was used in clinical diagnostic or any other procedures.