

# Synthetic Alpha-Melanocyte Stimulating Hormone (aMSH) Instruction Manual

## SLPA412Mi01

**Homo sapiens (Human), Mus musculus (Mouse), Rattus norvegicus (Rat),  
Oryctolagus cuniculus (Rabbit), Sus scrofa; Porcine (Pig), Bos taurus; Bovine  
(Cattle), Ovis aries; Ovine (Sheep)**

<b>Source</b>	Peptide synthesis
<b>Predicted Molecular Mass</b>	n/a
<b>Buffer Formulation</b>	PBS, pH7.4, containing 0.01% SKL, 1mM DTT, 5% Trehalose and Proclin300.
<b>Traits</b>	Freeze-dried powder
<b>Purity</b>	> 90%
<b>Isoelectric Point</b>	n/a
<b>Applications</b>	Immunogen; Blocking Peptide.

### SEQUENCE

SYS MEHFRWGKPV

### USAGE

Reconstitute in 10mM PBS (pH7.4) to a concentration of 0.1-1.0 mg/mL. Do not vortex.

### STORAGE

Avoid repeated freeze/thaw cycles. Store at 2-8°C for one month. Aliquot and store at -80°C for 12 months.

### STABILITY

The thermal stability is described by the loss rate. The loss rate was determined by accelerated thermal degradation test, that is, incubate the protein at 37°C for 48h, and no obvious degradation and precipitation were observed. The loss rate is less than 5% within the expiration date under appropriate storage condition.

### Image

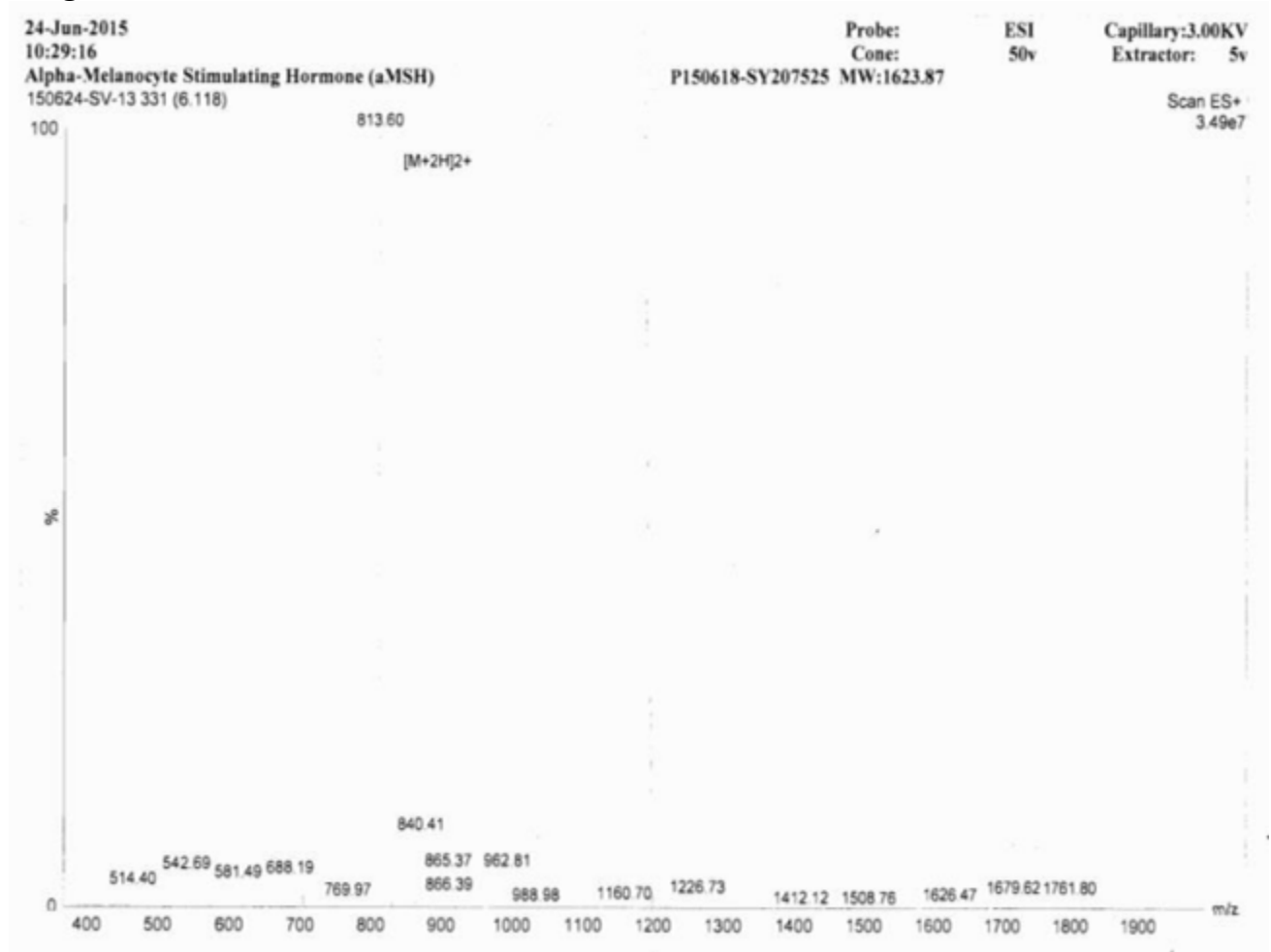


Figure. MASS Spectrometry of the Original Peptide

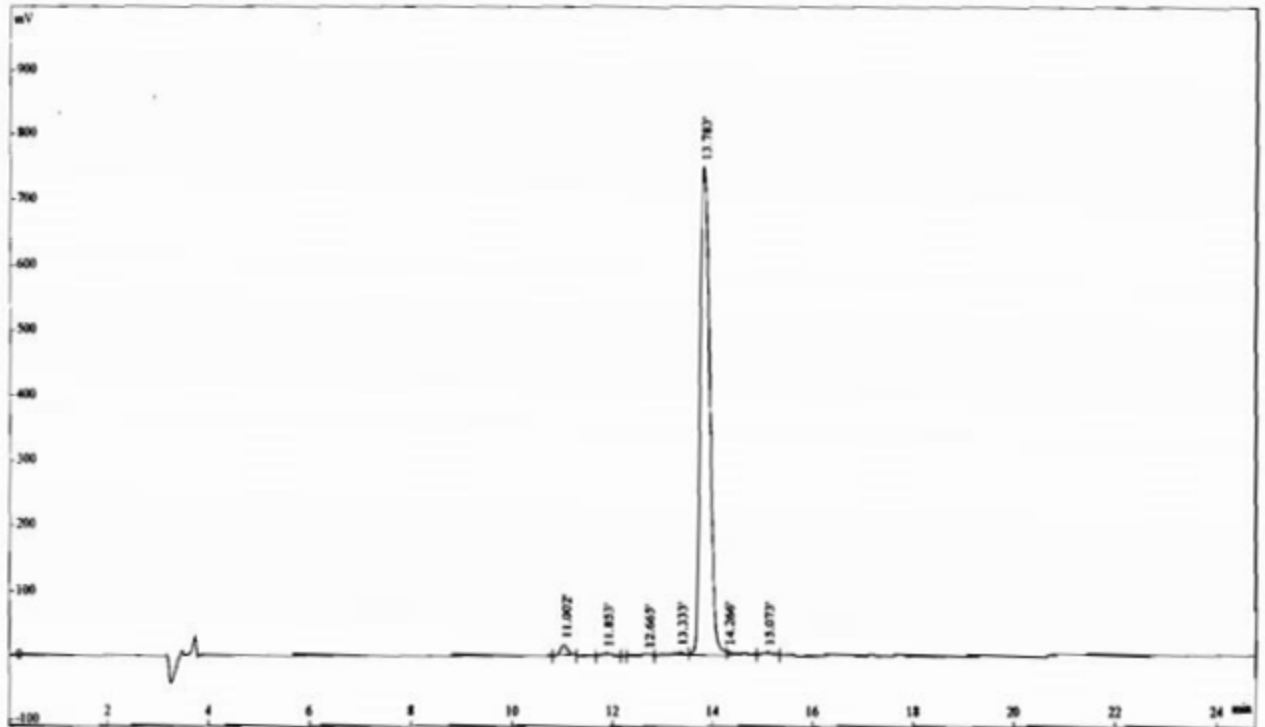


Figure. HPLC of the Original Peptide

**[IMPORTANT NOTE]**

The kit is designed for research use only, we will not be responsible for any issue if the kit was used in clinical diagnostic or any other procedures.