



SunLong Biotech Co.,LTD
Tel: 0086-571- 56623320 Fax:0086-571- 56623318
E-mail:sales@sunlongbiotech.com
www.sunlongbiotech.com

[KD-Validated] Anti-ABCG2 Rabbit Monoclonal Antibody

Cat No.: KD-10027

Aliases:

ABCG2; ATP Binding Cassette Subfamily G Member 2 (Junior Blood Group); BCRP; ABCP; MXR; EST157481; CD338; ATP-Binding Cassette, Sub-Family G (WHITE), Member 2 (Junior Blood Group); Broad Substrate Specificity ATP-Binding Cassette Transporter ABCG2; Placenta-Specific ATP-Binding Cassette Transporter; Mitoxantrone Resistance-Associated Protein; Breast Cancer Resistance Protein; Urate Exporter; CDw338; BCRP1; Broad Substrate Specificity ATP-Binding Cassette Transporter ABCG2 Isoform 1 (Junior Blood Group); Multi Drug Resistance Efflux Transport ATP-Binding Cassette Sub-Family G (WHITE) Member 2; ATP-Binding Cassette, Sub-Family G (WHITE), Member 2; ATP-Binding Cassette Sub-Family G Member02; ATPbinding Cassette Transporter ABCG2; ATP-Binding Cassette Transporter G2; Placenta Specific MDR Protein 2; ABC Transporter; CD338 Antigen; EC 7.6.2.2; CDw38; UAQTL1; ABC15; GOUT1; MXR-1; BMDP; MXR1; MRX

Background:

UniProt Entry: [Q9UNQ0](#);NCBI Gene Entry: [9429](#)

Application Information

Molecular Weight: Predicted, 72 kDa, observed, 72 kDa Clonality: Rabbit monoclonal antibody Clone ID: 23GB3130 Species Reactivity: Human, Mouse Applications Tested: Western Blotting (WB), Flow Cytometry (FCM), Immunocytochemistry (IC)

Immunogen

A synthesized peptide derived from human ABCG2

Isotype

Rabbit IgG

Storage Buffer

Supplied in PBS (pH 7.4) containing 50% glycerol, and 0.02% sodium azide.

Storage

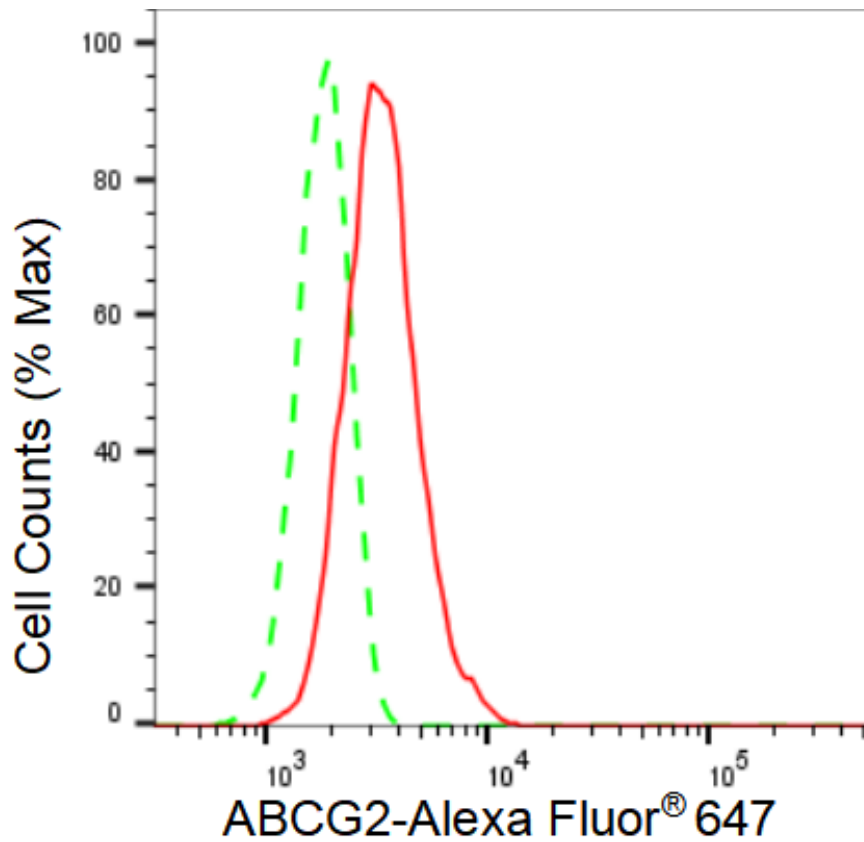
Store at -20 °C for one year.

Recommended Dilutions

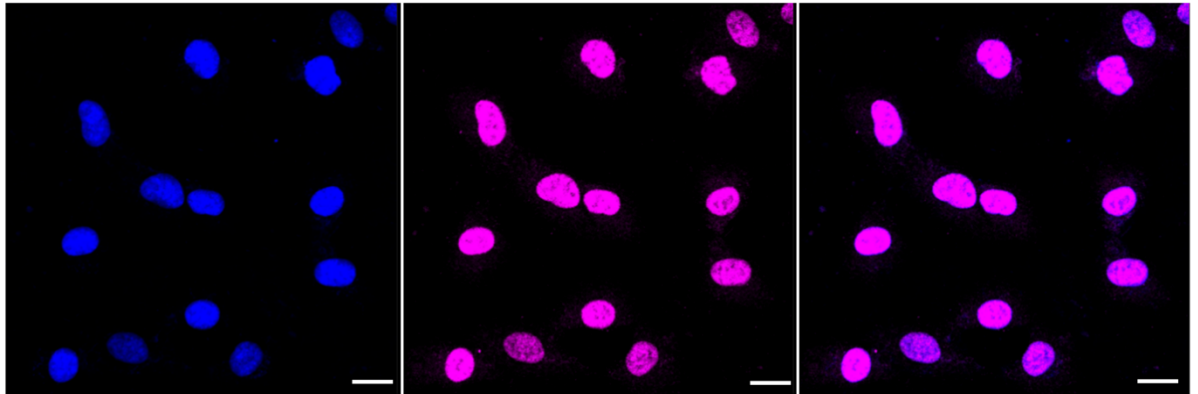
Western Blotting (WB): 1:1,000-1:5,000 Flow Cytometry (FCM): 1:2,000
Immunocytochemistry (IC): 1:1,000

Protocols

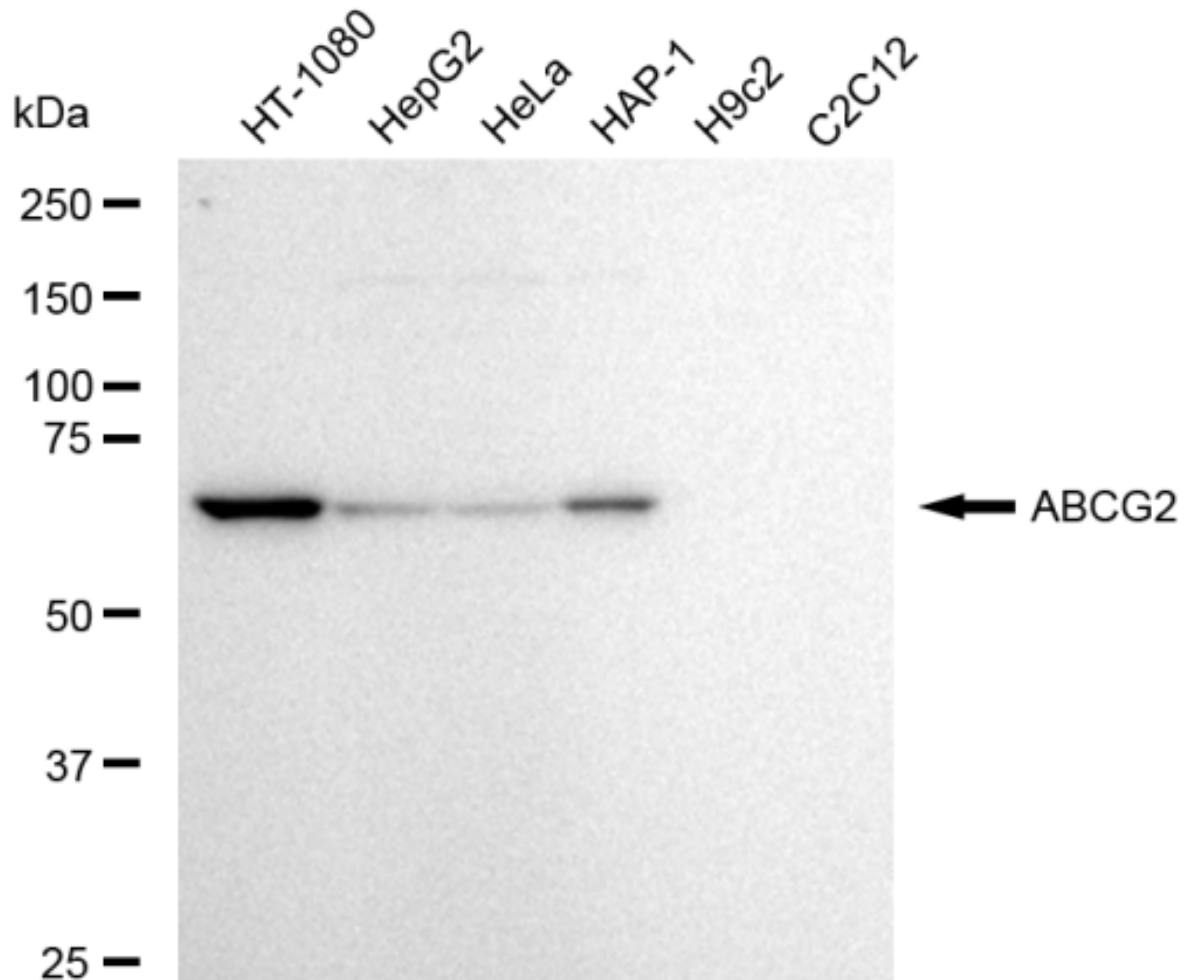
For general and specific antibody protocols please visit our website. Read all instructions before using this product.



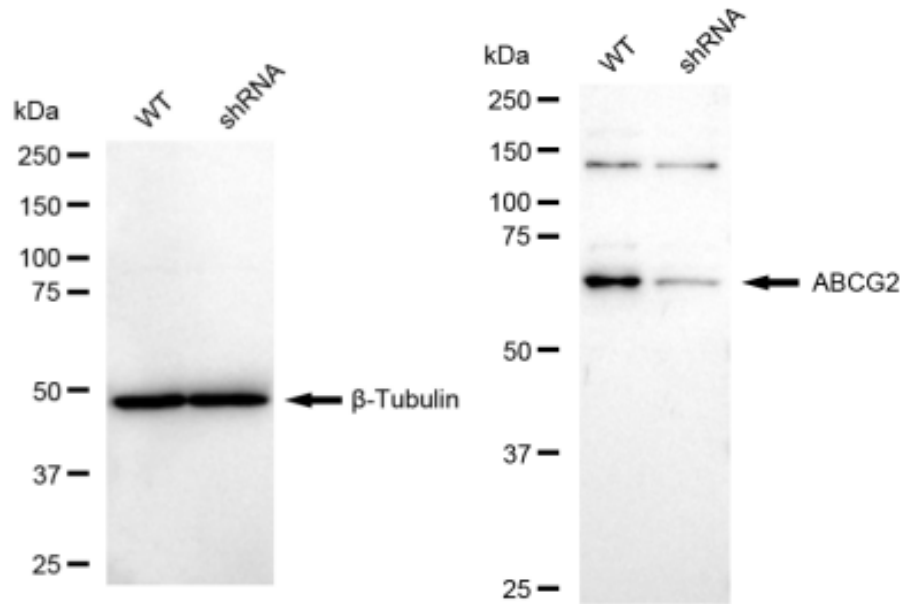
Flow cytometric analysis of ABCG2 expression in HT-1080 cells using ABCG2 antibody 1:2,000. Green, isotype control; red, ABCG2.



Immunocytochemical staining of HT-1080 cells with ABCG2 antibody 1:1,000. Nuclei were stained blue with DAPI; ABCG2 was stained magenta with Alexa Fluor® 647. Images were taken using Leica stellaris 5. Protein abundance based on laser Intensity and smart gain: Medium. Scale bar: 20 μ m.



Western blotting analysis using anti-ABCG2 antibody 1:5,000 and HRP-conjugated goat anti-rabbit secondary antibody 1:20,000 respectively. Image was developed using FeQ™ ECL Substrate Kit .



Western blotting analysis using anti-ABCG2 antibody 1:5,000 and HRP-conjugated goat anti-rabbit secondary antibody 1:20,000 respectively. Image was developed using FeQ™ ECL Substrate Kit .