



SunLong Biotech Co.,LTD
Tel: 0086-571- 56623320 Fax:0086-571- 56623318
E-mail:sales@sunlongbiotech.com
www.sunlongbiotech.com

[KD-Validated] Anti-Acetyl-CoA carboxylase alpha Rabbit Monoclonal Antibody

Cat No.: KD-10031

Aliases:

ACACA; Acetyl-CoA Carboxylase Alpha; ACC1; ACCA; Acetyl-Coenzyme A Carboxylase Alpha; Acetyl-CoA Carboxylase 1; ACC-Alpha; HACCC1; ACAC; ACACalpha; ACCalpha; Acac1; ACC; EC 6.4.1.2; ACACALPHA; ACC-ALPHA; ACCALPHA; ACACAD; ACAC1

Background:

UniProt Entry: [Q13085](#);NCBI Gene Entry: [31](#)

Application Information

Molecular Weight: Predicted, 266 kDa, observed, 266 kDa Clonality: Rabbit monoclonal antibody Clone ID: 23GB5645 Species Reactivity: Human, Mouse, Rat Applications Tested: Western Blotting (WB), Flow Cytometry (FCM), Immunocytochemistry (IC)

Immunogen

A synthesized peptide derived from human Acetyl Coenzyme A Carboxylase

Isotype

Rabbit IgG

Storage Buffer

Supplied in PBS (pH 7.4) containing 50% glycerol, and 0.02% sodium azide.

Storage

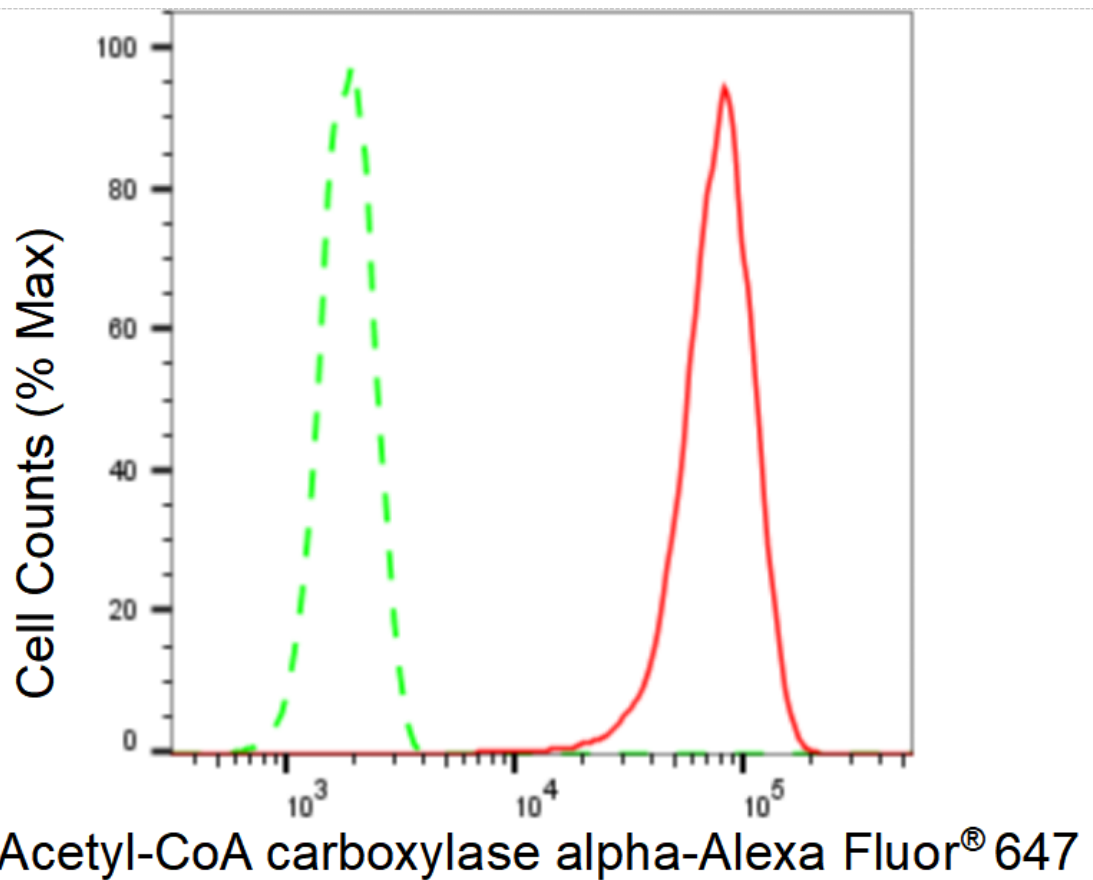
Store at -20 °C for one year.

Recommended Dilutions

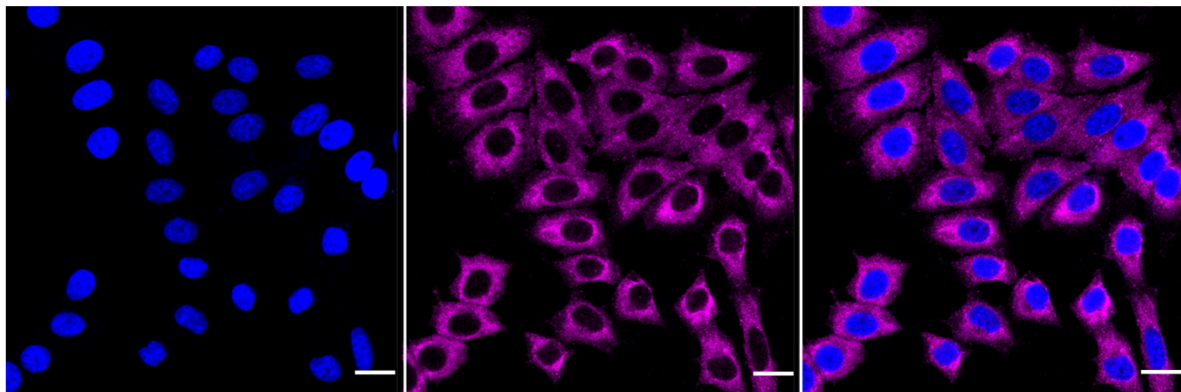
Western Blotting (WB): 1:1,000-1:5,000 Flow Cytometry (FCM): 1:2,000
Immunocytochemistry (IC): 1:1,000

Protocols

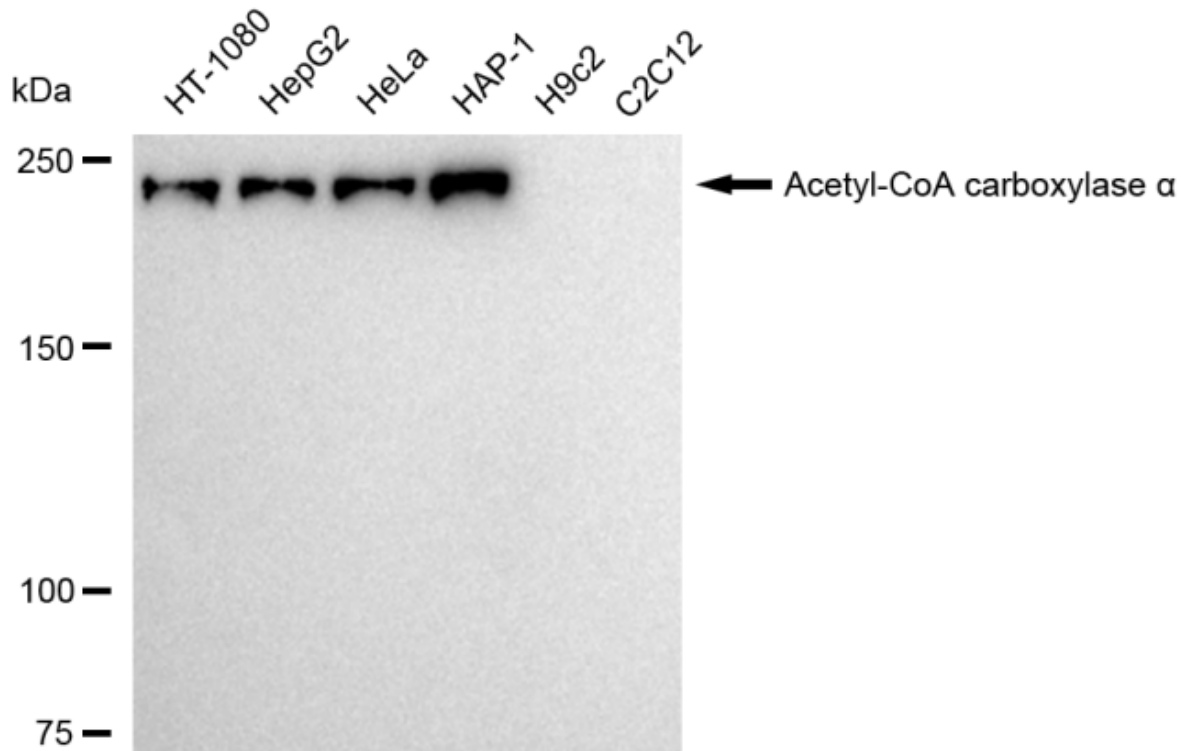
For general and specific antibody protocols please visit our website. Read all instructions before using this product.



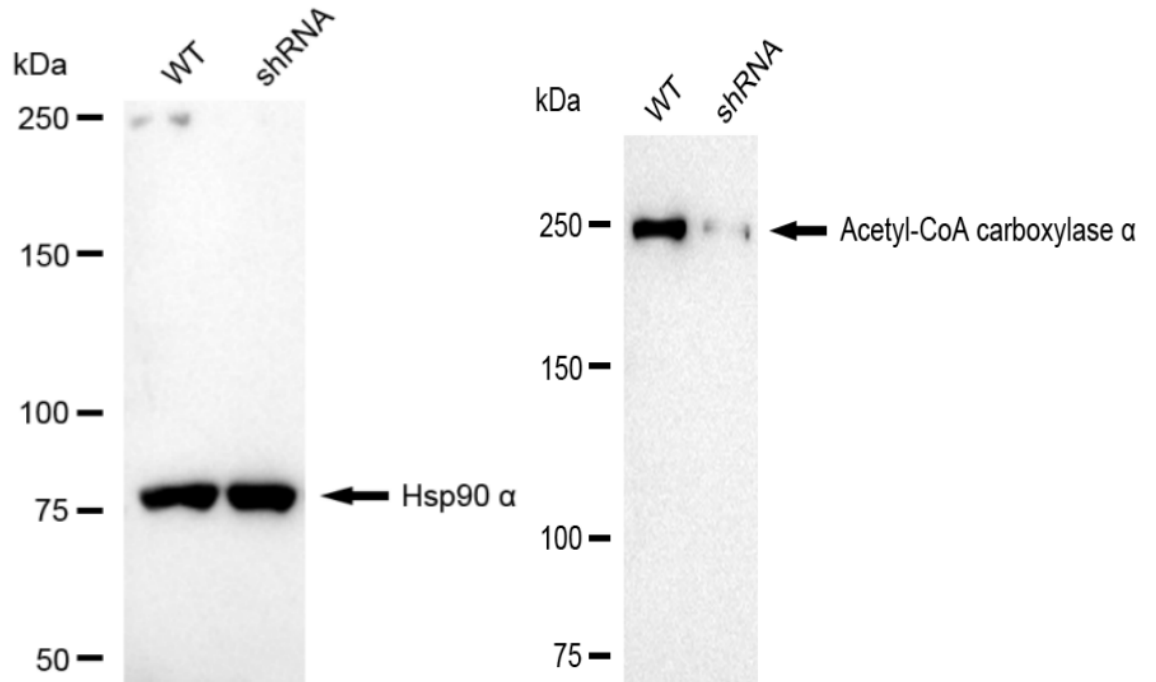
Flow cytometric analysis of Acetyl-CoA carboxylase alpha expression in HepG2 cells using Acetyl-CoA carboxylase alpha antibody 1:2,000. Green, isotype control; red, Acetyl-CoA carboxylase alpha.



Immunocytochemical staining of HepG2 cells with anti-Acetyl-CoA carboxylase alpha antibody 1:1,000. Nuclei were stained blue with DAPI; Acetyl-CoA carboxylase alpha was stained magenta with Alexa Fluor® 647. Images were taken using Leica stellaris 5. Protein abundance based on laser Intensity and smart gain: Medium. Scale bar: 20 μ m.



Western blotting analysis using anti-Acetyl-CoA carboxylase alpha antibody 1:5,000 and HRP-conjugated goat anti-rabbit secondary antibody 1:20,000 respectively. Image was developed using FeQ™ ECL Substrate Kit .



Western blotting analysis using anti-Acetyl-CoA carboxylase α antibody 1:5,000 and HRP-conjugated goat anti-rabbit secondary antibody 1:20,000 respectively. Image was developed using NaQ™ ECL Substrate Kit .