



SunLong Biotech Co.,LTD
Tel: 0086-571- 56623320 Fax:0086-571- 56623318
E-mail:sales@sunlongbiotech.com
www.sunlongbiotech.com

[KD-Validated] Anti-ACAP2 Rabbit Monoclonal Antibody

Cat No.: KD-10034

Aliases:

ACAP2; ArfGAP With Coiled-Coil, Ankyrin Repeat And PH Domains 2; KIAA0041; CNT-B2; CENTB2; Arf-GAP With Coiled-Coil, ANK Repeat And PH Domain-Containing Protein 2; Centaurin-Beta-2; Arf GAP With Coiled Coil, ANK Repeat And PH Domains 2; Centaurin, Beta 2; Cnt-B2

Background:

UniProt Entry: [Q15057](#);NCBI Gene Entry: [23527](#)

Application Information

Molecular Weight: Predicted, 88 kDa, observed, 88 kDa Clonality: Rabbit monoclonal antibody Clone ID: 23GB1565 Species Reactivity: Human, Rat Applications Tested: Western Blotting (WB), Flow Cytometry (FCM), Immunocytochemistry (IC)

Immunogen

A synthesized peptide derived from human ACAP2

Isotype

Rabbit IgG

Storage Buffer

Supplied in PBS (pH 7.4) containing 50% glycerol, and 0.02% sodium azide.

Storage

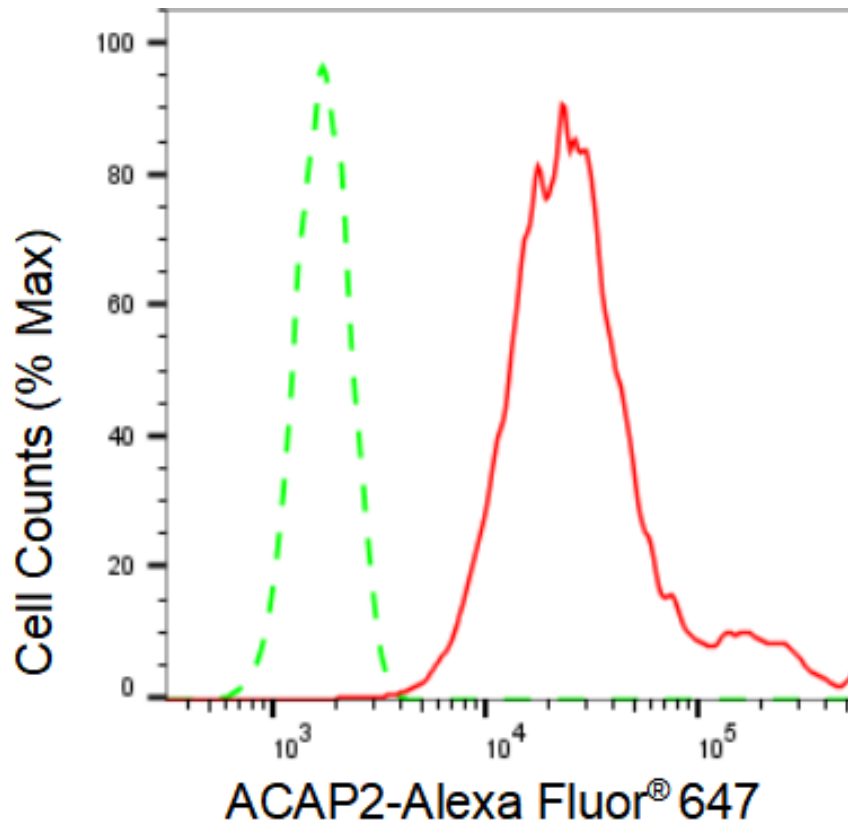
Store at -20 °C for one year.

Recommended Dilutions

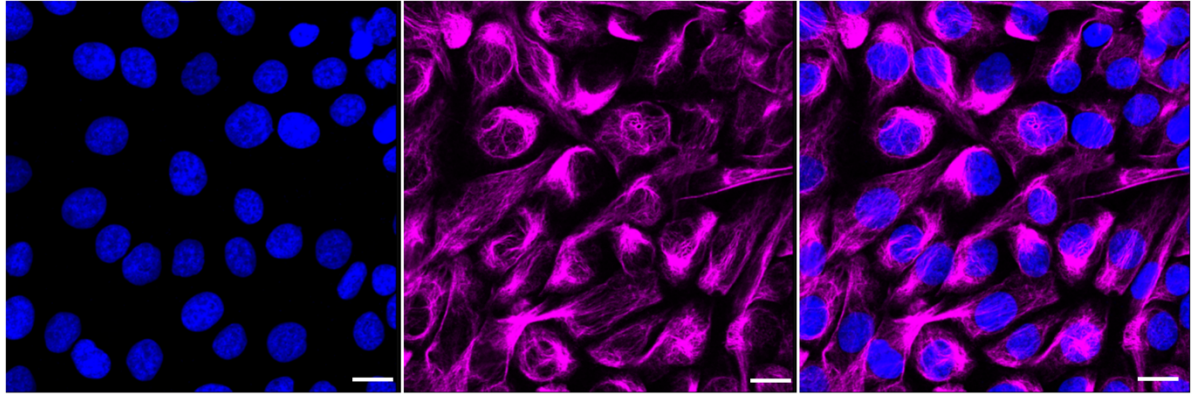
Western Blotting (WB): 1:1,000-1:5,000 Flow Cytometry (FCM): 1:2,000
Immunocytochemistry (IC): 1:1,000

Protocols

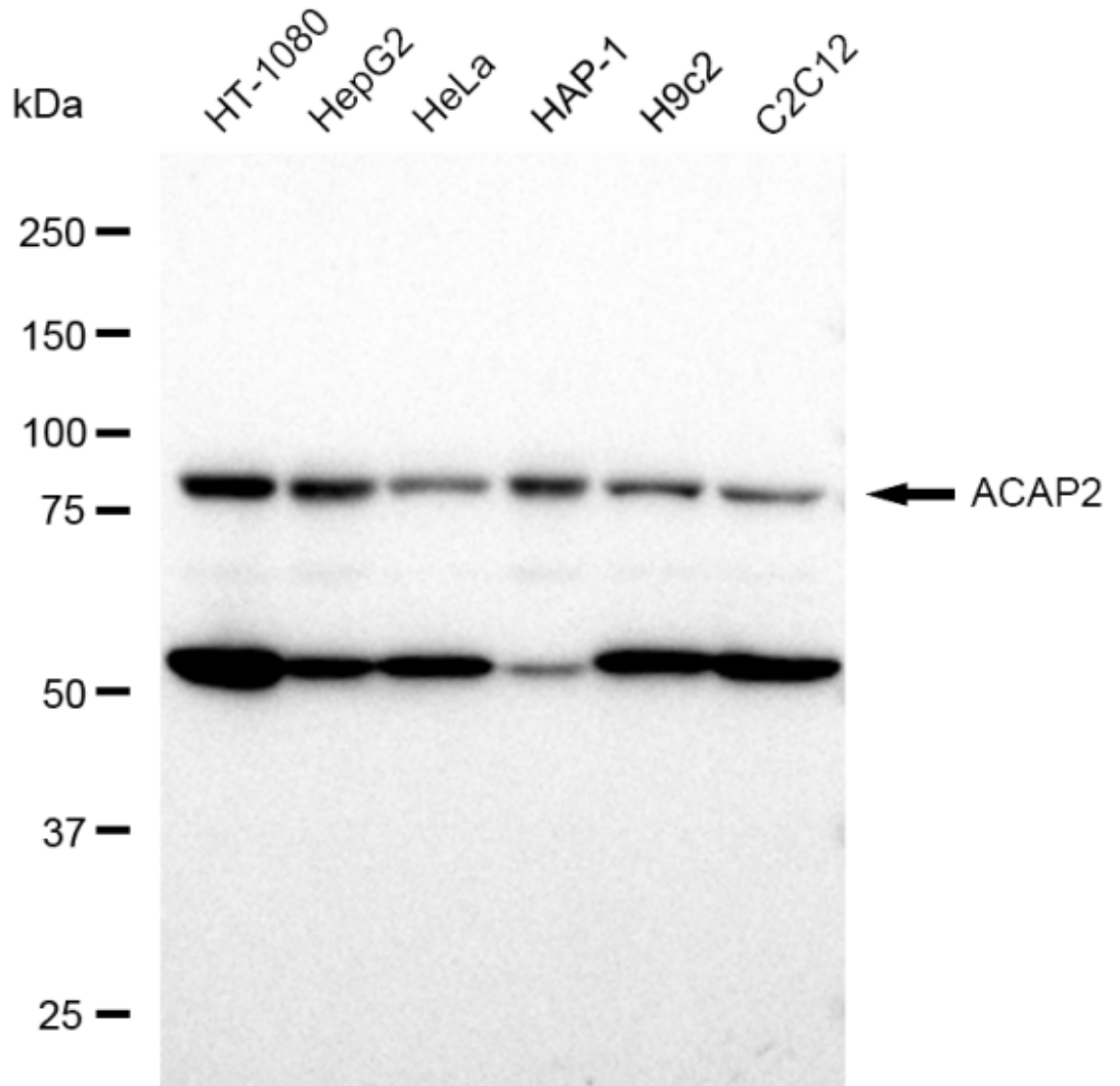
For general and specific antibody protocols please visit our website. Read all instructions before using this product.



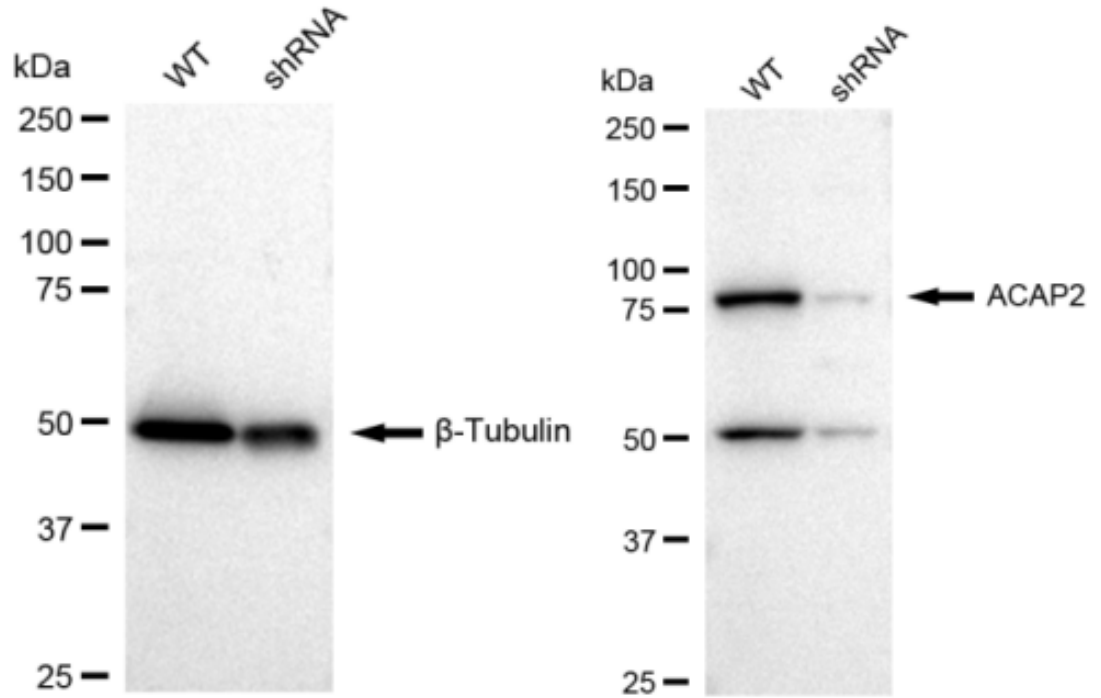
Flow cytometric analysis of ACAP2 expression in HT-1080 cells using ACAP2 antibody 1:2,000. Green, isotype control; red, ACAP2.



Immunocytochemical staining of HT-1080 cells with ACAP2 antibody 1:1,000. Nuclei were stained blue with DAPI; ACAP2 was stained magenta with Alexa Fluor® 647. Images were taken using Leica stellaris 5. Protein abundance based on laser Intensity and smart gain: High. Scale bar: 20 μm .



Western blotting analysis using anti-ACAP2 antibody 1:5,000 and HRP-conjugated goat anti-rabbit secondary antibody 1:20,000 respectively. Image was developed using FeQ™ ECL Substrate Kit . ACAP2, ArfGAP with coiled-coil, ankyrin repeat and PH domains 2.



Western blotting analysis using anti-ACAP2 antibody 1:5,000 and HRP-conjugated goat anti-rabbit secondary antibody 1:20,000 respectively. Image was developed using FeQ™ ECL Substrate Kit .