



SunLong Biotech Co.,LTD
Tel: 0086-571- 56623320 Fax:0086-571- 56623318
E-mail:sales@sunlongbiotech.com
www.sunlongbiotech.com

[KD-Validated] Anti-Acetyl-CoA acetyltransferase 1 Rabbit Monoclonal Antibody

Cat No.: KD-10035

Aliases:

ACAT1; Acetyl-CoA Acetyltransferase 1; THIL; ACAT; Acetyl-CoA Acetyltransferase, Mitochondrial; Acetyl-Coenzyme A Acetyltransferase 1; Acetoacetyl Coenzyme A Thiolase; Acetoacetyl-CoA Thiolase; EC 2.3.1.9; MAT; T2; Mitochondrial Acetoacetyl-CoA Thiolase; Testicular Tissue Protein Li 198; EC 2.3.1

Background:

UniProt Entry: [P24752](#);NCBI Gene Entry: [38](#)

Application Information

Molecular Weight: Predicted, 45 kDa, observed, 40 kDa Clonality: Rabbit monoclonal antibody Clone ID: 23GB1255 Species Reactivity: Human, Mouse, Rat Applications Tested: Western Blotting (WB), Flow Cytometry (FCM), Immunocytochemistry (IC)

Immunogen

A synthesized peptide derived from human ACAT1

Isotype

Rabbit IgG

Storage Buffer

Supplied in PBS (pH 7.4) containing 50% glycerol, and 0.02% sodium azide.

Storage

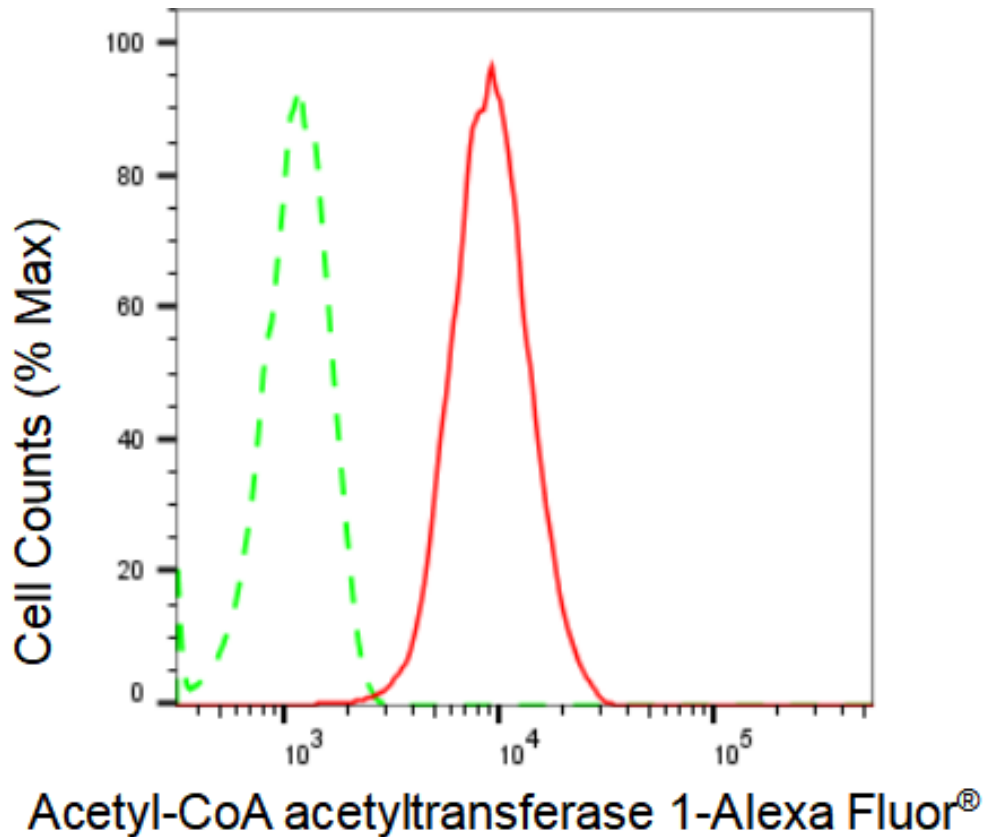
Store at -20 °C for one year.

Recommended Dilutions

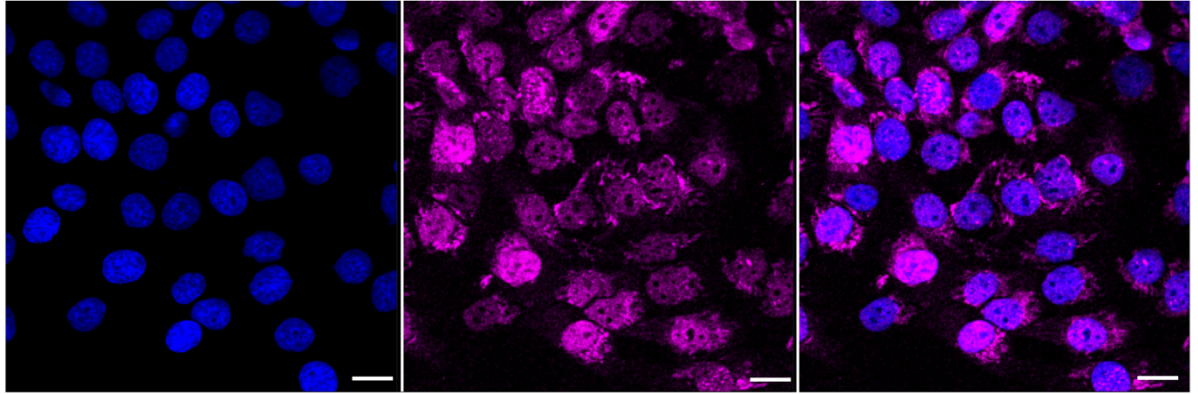
Western Blotting (WB): 1:1,000-1:5,000 Flow Cytometry (FCM): 1:2,000
Immunocytochemistry (IC): 1:1,000

Protocols

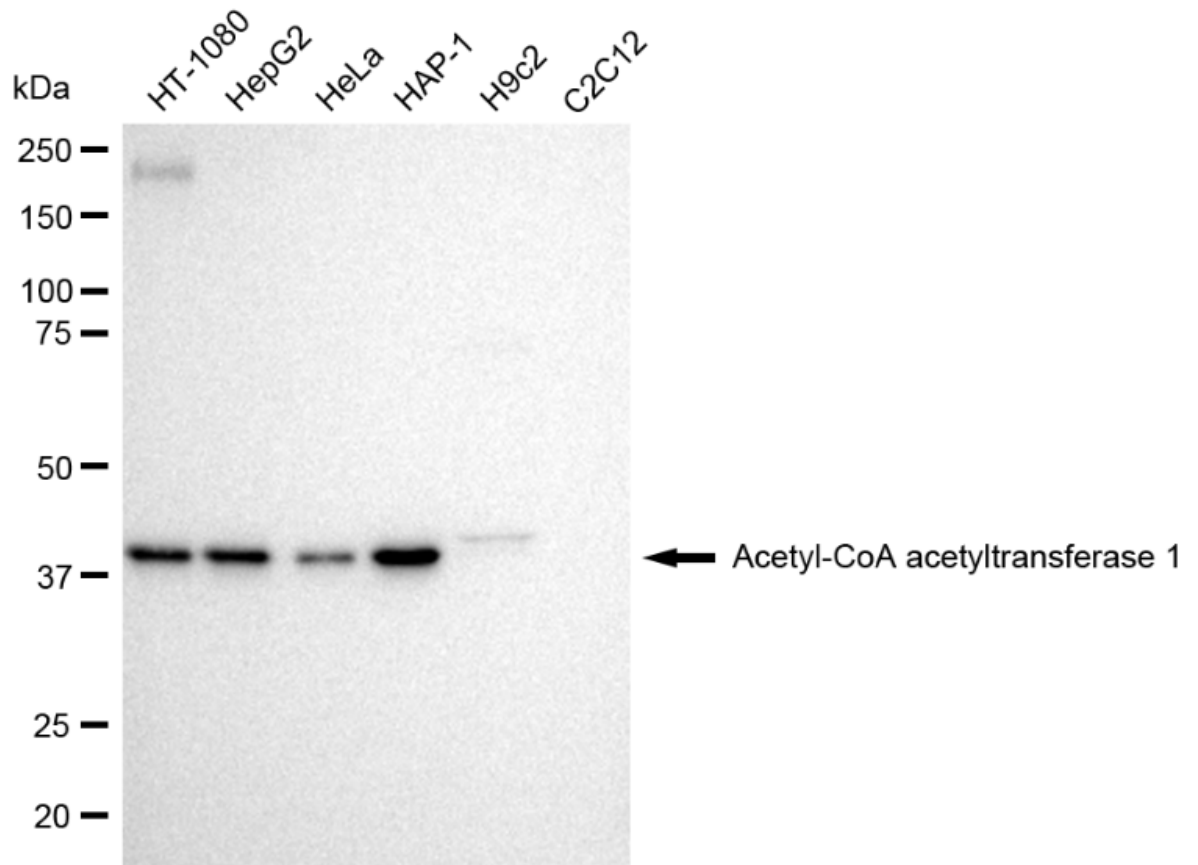
For general and specific antibody protocols please visit our website. Read all instructions before using this product.



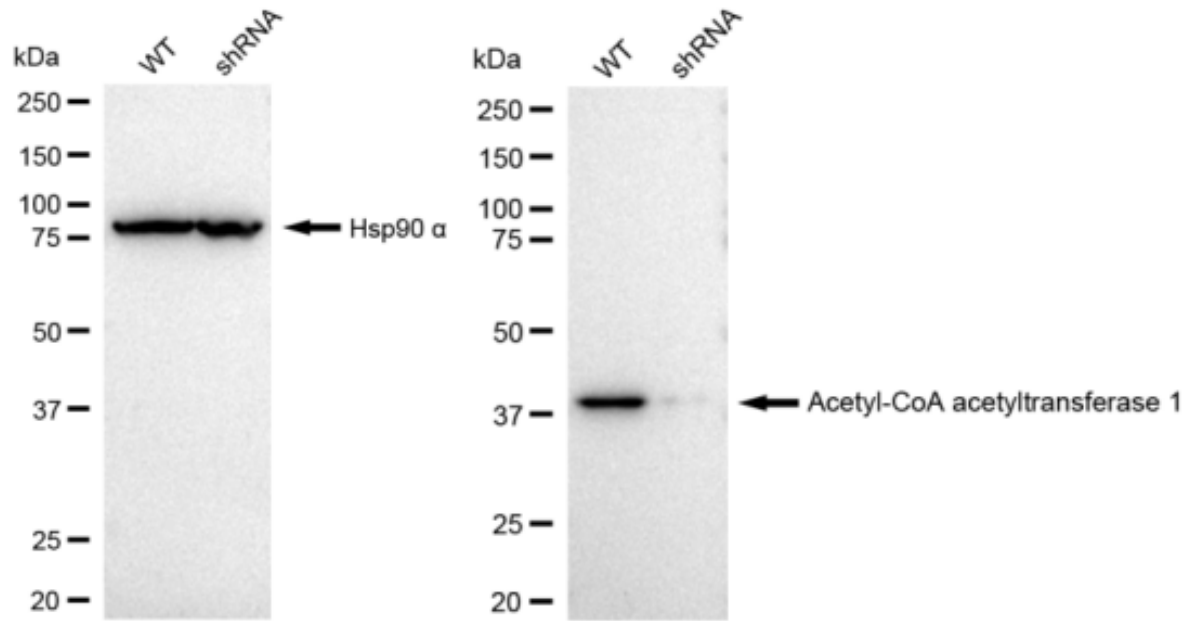
Flow cytometric analysis of Acetyl-CoA acetyltransferase 1 expression in HepG2 cells using Acetyl-CoA acetyltransferase 1 antibody 1:2,000. Green, isotype control; red, Acetyl-CoA acetyltransferase 1.



Immunocytochemical staining of HT-1080 cells with Acetyl-CoA acetyltransferase 1 antibody 1:1,000 . Nuclei were stained blue with DAPI;Acetyl-CoA acetyltransferase 1 with Alexa Fluor® 647. Images were taken using Leica stellaris 5. Protein abundance based on laser Intensity and smart gain: Medium. Scale bar: 20 μ m.



Western blotting analysis using anti-Acetyl-CoA acetyltransferase 1 antibody 1:5,000 and HRP-conjugated goat anti-rabbit secondary antibody 1:20,000 respectively. Image was developed using FeQ™ ECL Substrate Kit .



Western blotting analysis using anti-Acetyl-CoA acetyltransferase 1 antibody 1:5,000 and HRP-conjugated goat anti-rabbit secondary antibody 1:20,000 respectively. Image was developed using FeQ™ ECL Substrate Kit .