



SunLong Biotech Co.,LTD  
Tel: 0086-571- 56623320 Fax:0086-571- 56623318  
E-mail:sales@sunlongbiotech.com  
www.sunlongbiotech.com

## **[KD-Validated] Anti-Acetyl-CoA acetyltransferase 2 Rabbit Monoclonal Antibody**

Cat No.: KD-10036

### **Aliases:**

ACAT2; Acetyl-CoA Acetyltransferase 2; Acetyl-CoA Acetyltransferase, Cytosolic; Acetyl-CoA Transferase-Like Protein; Cytosolic Acetoacetyl-CoA Thiolase; Acetoacetyl Coenzyme A Thiolase; EC 2.3.1.9; Acetyl-Coenzyme A Acetyltransferase 2 (Acetoacetyl Coenzyme A Thiolase); Acetyl-Coenzyme A Acetyltransferase 2; EC 2.3.1; ACTL

### **Background:**

UniProt Entry: [Q9BWD1](#);NCBI Gene Entry: [39](#)

### **Application Information**

Molecular Weight: Predicted, 41 kDa, observed, 38 kDa Clonality: Rabbit monoclonal antibody Clone ID: 23GB4745 Species Reactivity: Human Applications Tested: Western Blotting (WB), Flow Cytometry (FCM)

### **Immunogen**

A synthesized peptide derived from human ACAT2

### **Isotype**

Rabbit IgG

### **Storage Buffer**

Supplied in PBS (pH 7.4) containing 50% glycerol, and 0.02% sodium azide.

### Storage

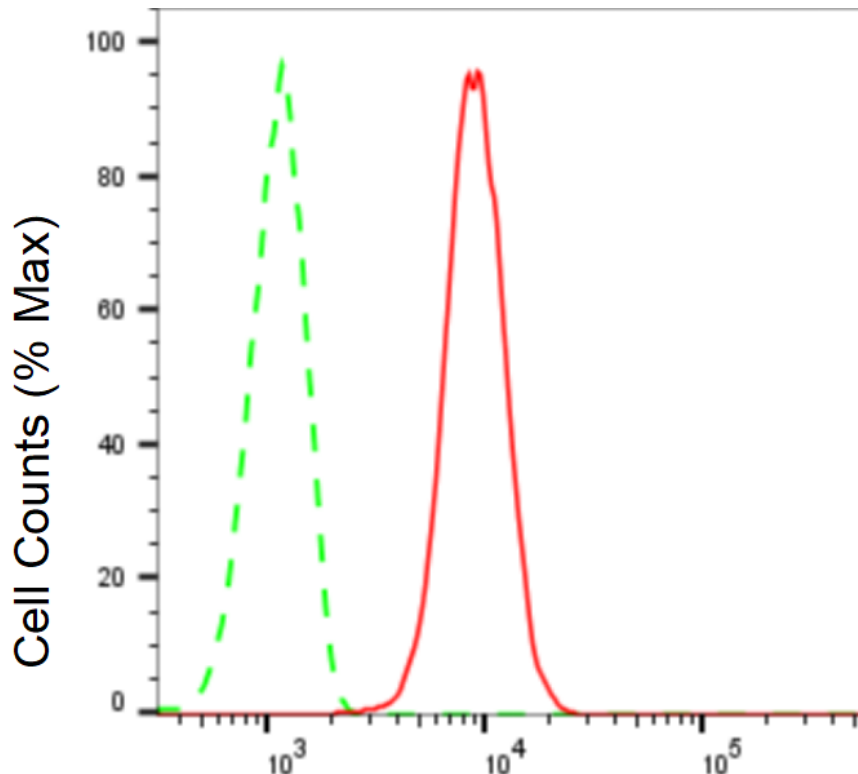
Store at -20 °C for one year.

### Recommended Dilutions

Western Blotting (WB): 1:1,000-1:5,000 Flow Cytometry (FCM): 1:2,000

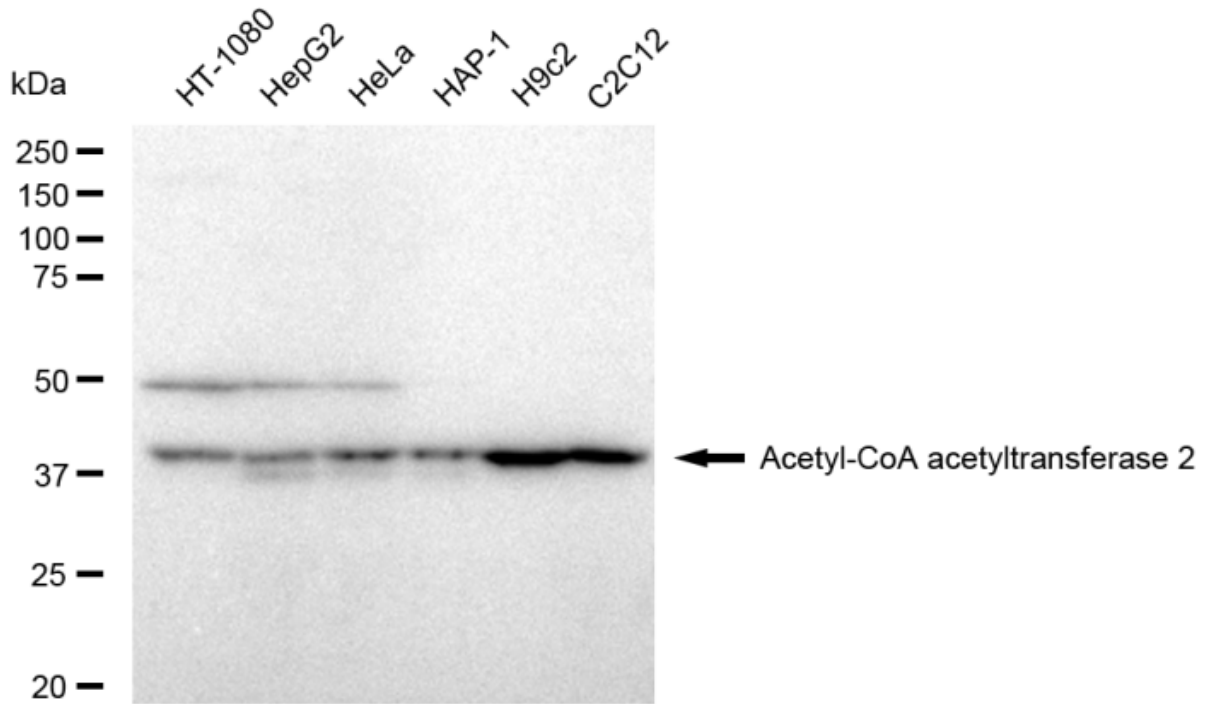
### Protocols

For general and specific antibody protocols please visit our website. Read all instructions before using this product.

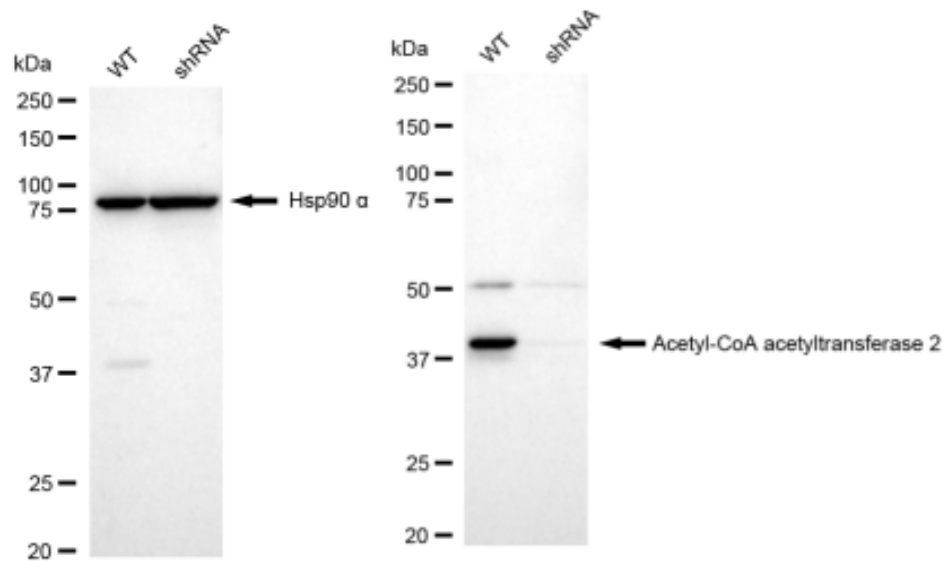


### Acetyl-CoA acetyltransferase 2-Alexa Fluor<sup>®</sup> 647

Flow cytometric analysis of Acetyl-CoA acetyltransferase 2 expression in C2C12 cells using Acetyl-CoA acetyltransferase 2 antibody 1:2,000. Green, isotype control; red, Acetyl-CoA acetyltransferase 2.



Western blotting analysis using anti-Acetyl-CoA acetyltransferase 2 antibody 1:5,000 and HRP-conjugated goat anti-rabbit secondary antibody 1:20,000 respectively. Image was developed using FeQ™ ECL Substrate Kit .



Western blotting analysis using anti-Acetyl-CoA acetyltransferase 2 antibody 1:5,000 and HRP-conjugated goat anti-rabbit secondary antibody 1:20,000 respectively. Image was developed using FeQ™ ECL Substrate Kit .