



SunLong Biotech Co.,LTD
Tel: 0086-571- 56623320 Fax:0086-571- 56623318
E-mail:sales@sunlongbiotech.com
www.sunlongbiotech.com

[KD-Validated] Anti-ACBD3 Rabbit Monoclonal Antibody

Cat No.: KD-10037

Aliases:

ACBD3; Acyl-CoA Binding Domain Containing 3; GCP60; PBR- And PKA-Associated Protein 7; GOCAP1; GOLPH1; PAP7; Peripheral Benzodiazepine Receptor-Associated Protein PAP7; Acyl-Coenzyme A Binding Domain Containing 3; Golgi Complex Associated Protein 1, 60kDa; Golgi Resident Protein GCP60; Golgi Phosphoprotein 1; Acyl-CoA-Binding Domain-Containing Protein; Golgi Complex-Associated Protein 1; PKA (RIalpha)-Associated Protein

Background:

UniProt Entry: [Q9H3P7](#);NCBI Gene Entry: [64746](#)

Application Information

Molecular Weight: Predicted, 60 kDa, observed, 70 kDa Clonality: Rabbit monoclonal antibody Clone ID: 23GB3620 Species Reactivity: Human, Mouse, Rat Applications Tested: Western Blotting (WB), Flow Cytometry (FCM), Immunocytochemistry (IC)

Immunogen

A synthesized peptide derived from human ACBD3

Isotype

Rabbit IgG

Storage Buffer

Supplied in PBS (pH 7.4) containing 50% glycerol, and 0.02% sodium azide.

Storage

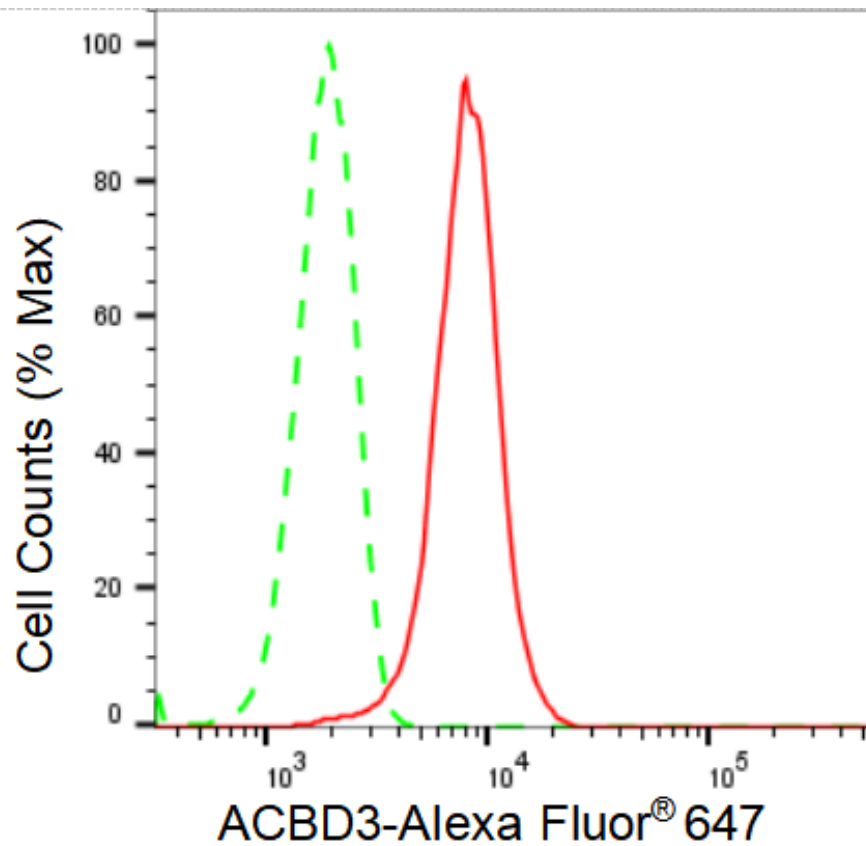
Store at -20 °C for one year.

Recommended Dilutions

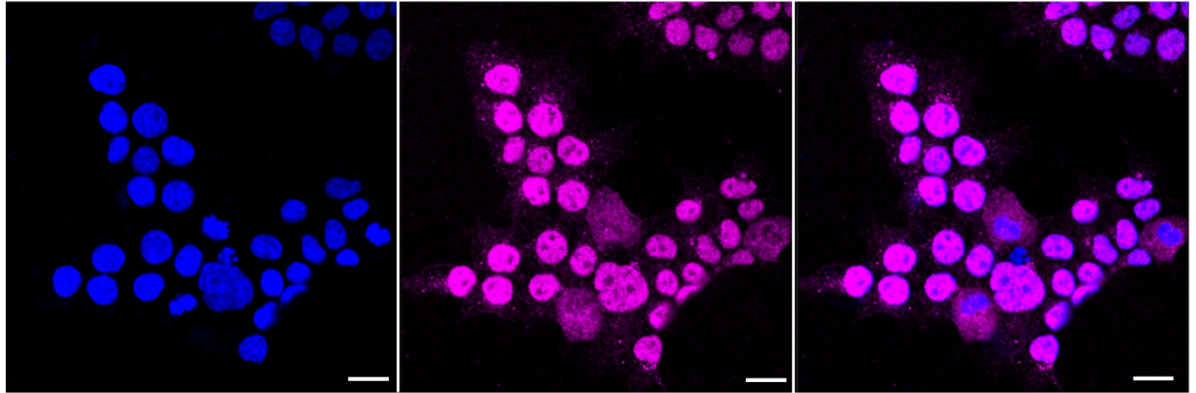
Western Blotting (WB): 1:1,000-1:5,000 Flow Cytometry (FCM): 1:2,000
Immunocytochemistry (IC): 1:1,000

Protocols

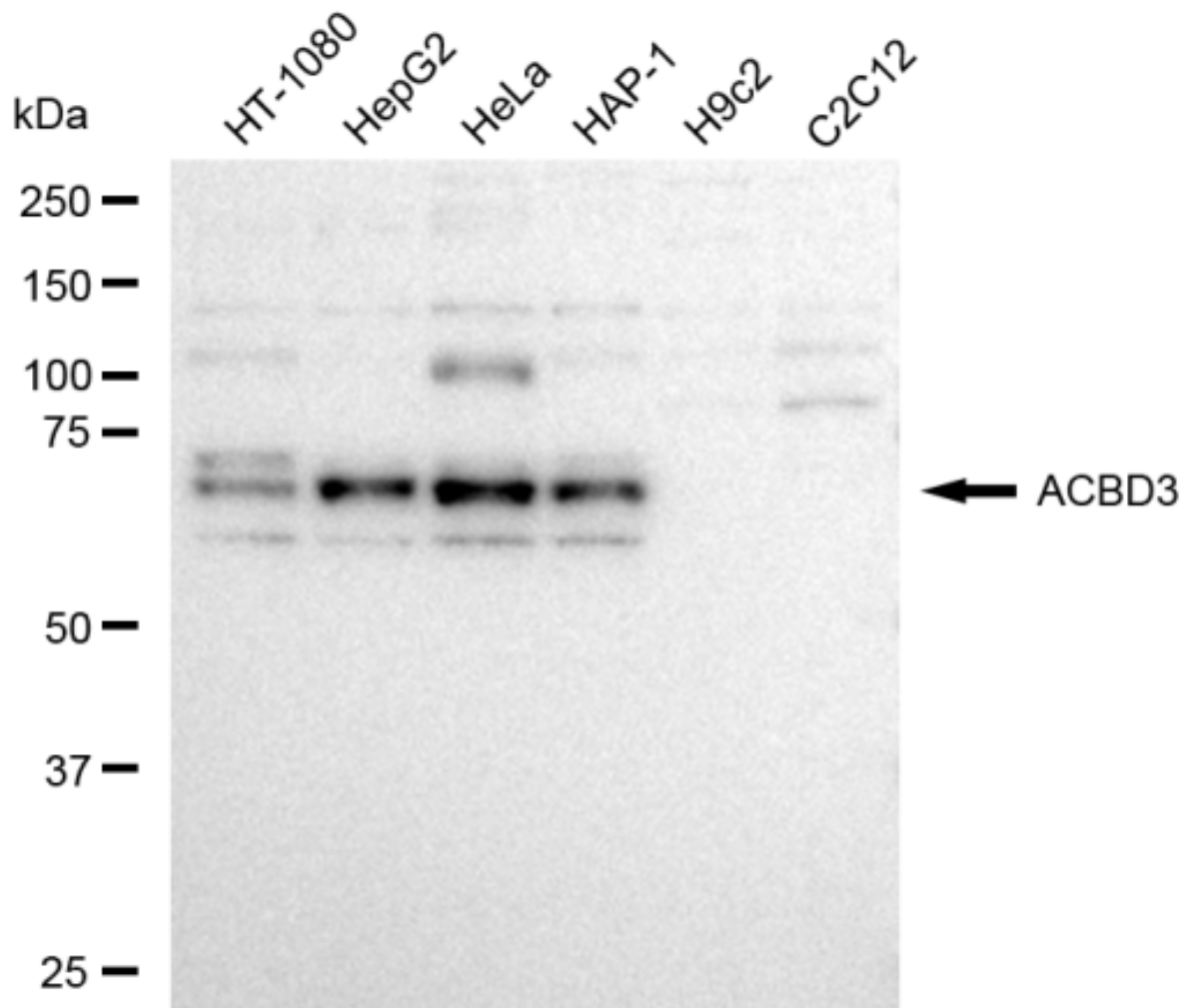
For general and specific antibody protocols please visit our website. Read all instructions before using this product.



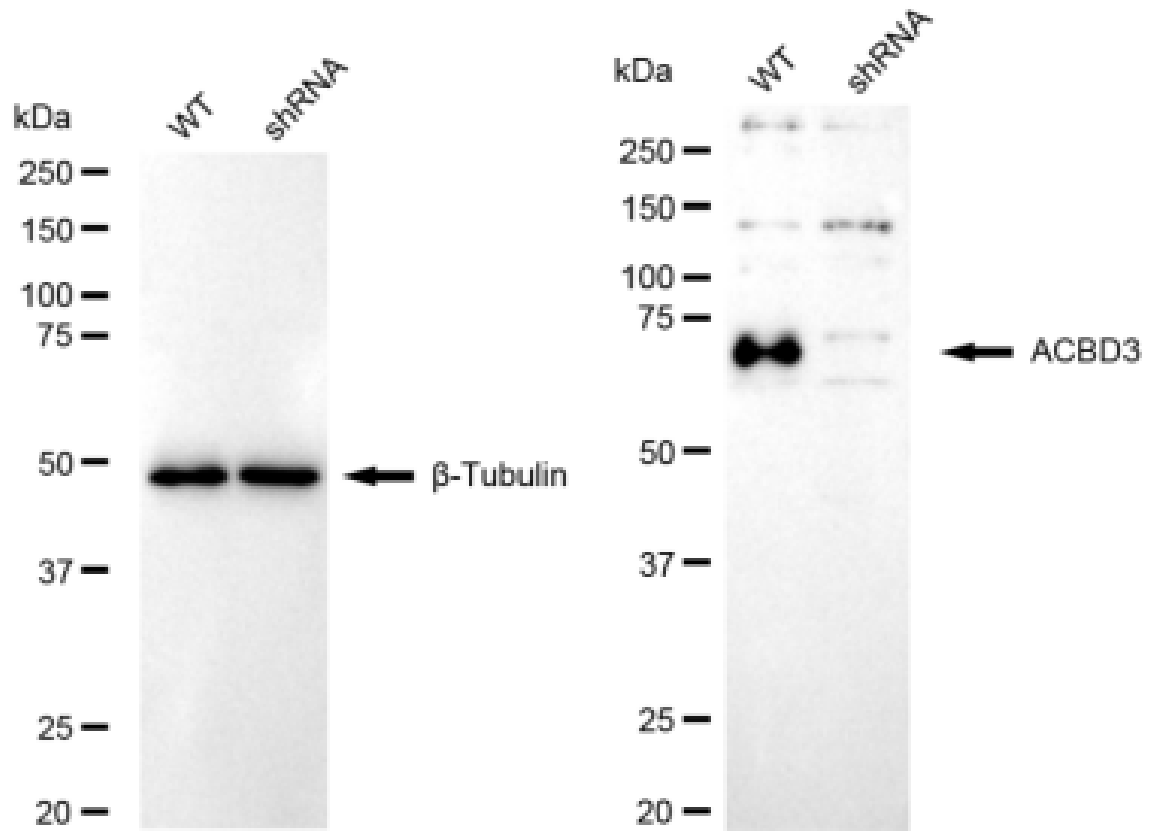
Flow cytometric analysis of ACBD3 expression in HeLa cells using ACBD3 antibody 1:2,000. Green, isotype control; red, ACBD3.



Immunocytochemical staining of HeLa cells with ACBD3 antibody 1:1,000. Nuclei were stained blue with DAPI; ACBD3 was stained magenta with Alexa Fluor® 647. Images were taken using Leica stellaris 5. Protein abundance based on laser Intensity and smart gain: Medium. Scale bar: 20 μ m.



Western blotting analysis using anti-ACBD3 antibody 1:5,000 and HRP-conjugated goat anti-rabbit secondary antibody 1:20,000 respectively. Image was developed using FeQ™ ECL Substrate Kit .



Western blotting analysis using anti-ACBD3 antibody 1:5,000 and HRP-conjugated goat anti-rabbit secondary antibody 1:20,000 respectively. Image was developed using FeQ™ ECL Substrate Kit .