



SunLong Biotech Co.,LTD
Tel: 0086-571- 56623320 Fax:0086-571- 56623318
E-mail:sales@sunlongbiotech.com
www.sunlongbiotech.com

[KD-Validated] Anti-ATP citrate lyase Rabbit Monoclonal Antibody

Cat No.: KD-10038

Aliases:

ACLY; ATP Citrate Lyase; ACL; ATPCL; CLATP; ATP-Citrate (Pro-S-)-Lyase; Citrate Cleavage Enzyme; ATP-Citrate Synthase; EC 2.3.3.8; ATP Citrate Synthase

Background:

UniProt Entry: [P53396](#);NCBI Gene Entry: [47](#)

Application Information

Molecular Weight: Predicted, 121 kDa, observed, 121 kDa Clonality: Rabbit monoclonal antibody Clone ID: 23GB1620 Species Reactivity: Human, Mouse, Rat Applications Tested: Western Blotting (WB), Flow Cytometry (FCM), Immunocytochemistry (IC)

Immunogen

A synthesized peptide derived from human ATP citrate lyase

Isotype

Rabbit IgG

Storage Buffer

Supplied in PBS (pH 7.4) containing 50% glycerol, and 0.02% sodium azide.

Storage

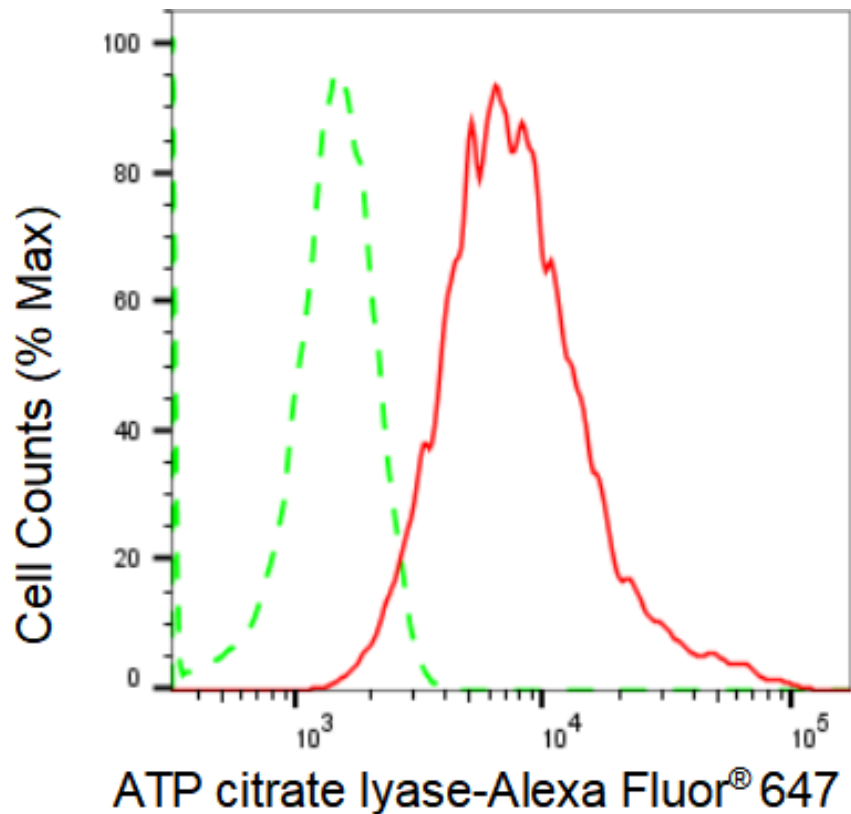
Store at -20 °C for one year.

Recommended Dilutions

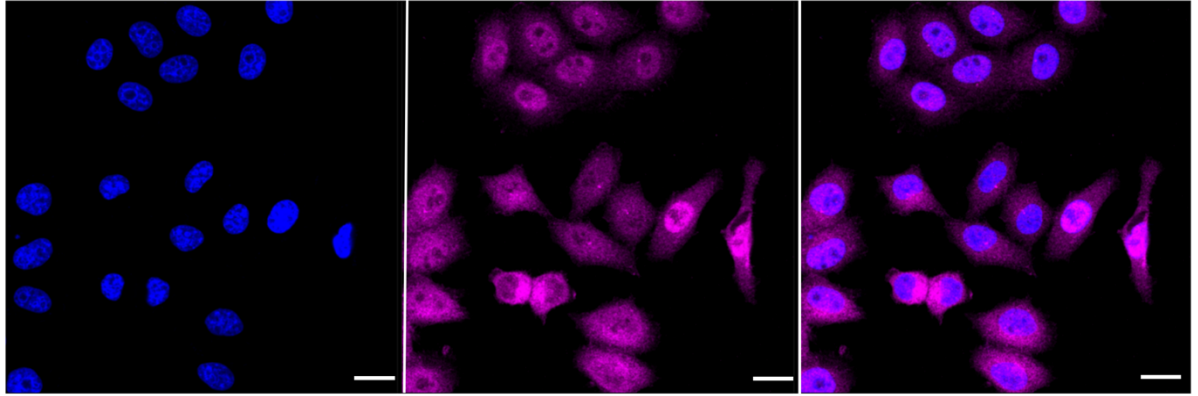
Western Blotting (WB): 1:1,000-1:5,000 Flow Cytometry (FCM): 1:2,000
Immunocytochemistry (IC): 1:1,000

Protocols

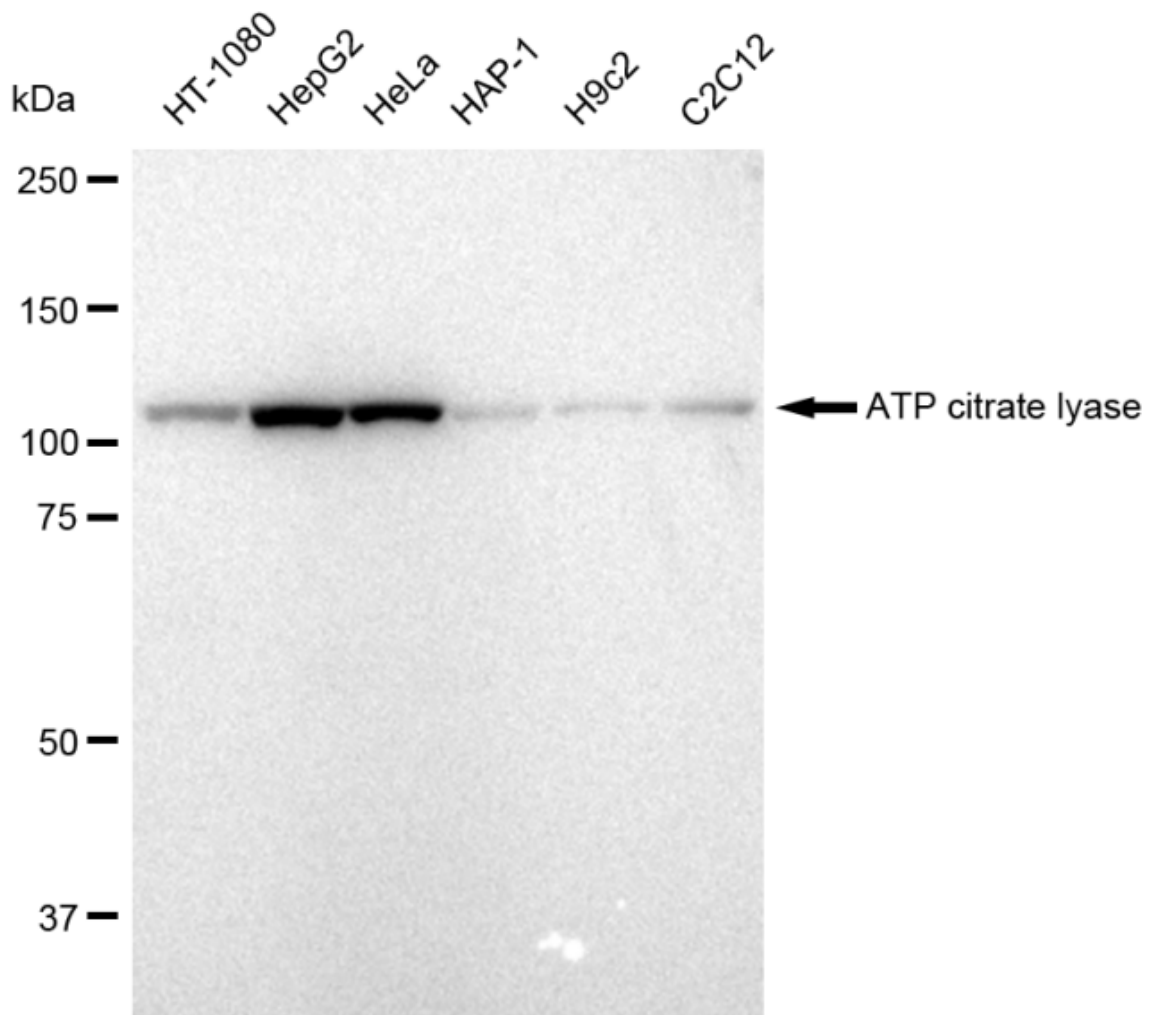
For general and specific antibody protocols please visit our website. Read all instructions before using this product.



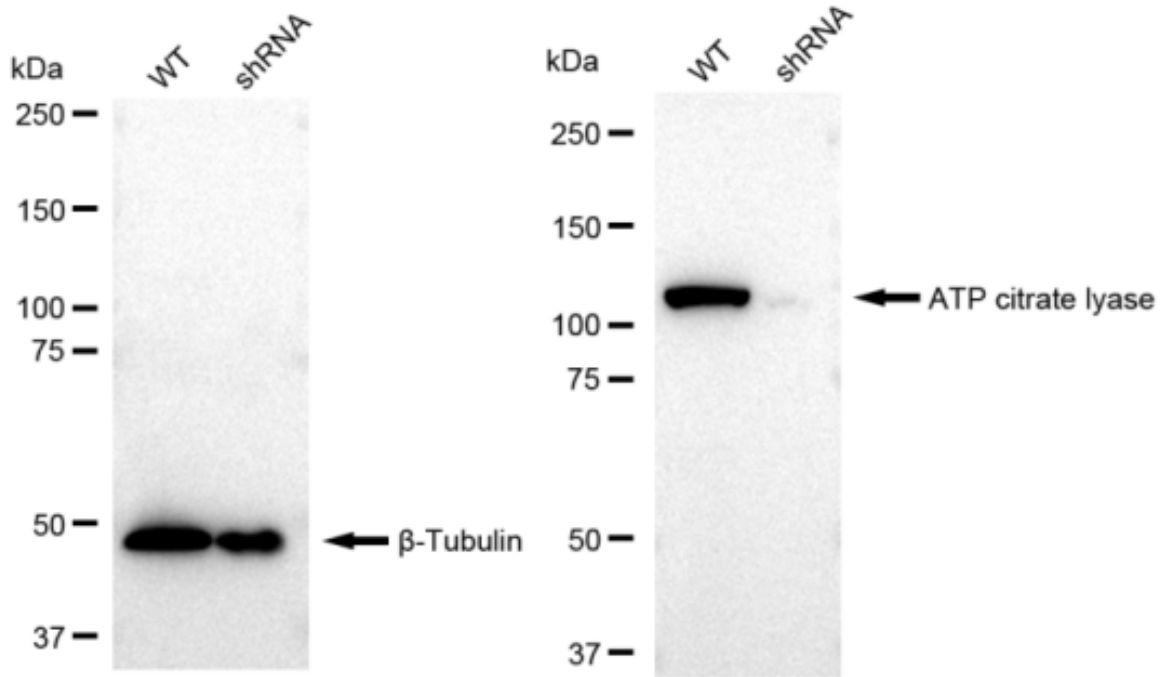
Flow cytometric analysis of ATP citrate lyase expression in HepG2 cells using ATP citrate lyase antibody 1:2,000. Green, isotype control; red, ATP citrate lyase.



Immunocytochemical staining of HepG2 cells with ATP citrate lyase antibody 1:1,000. Nuclei were stained blue with DAPI; ATP citrate lyase was stained magenta with Alexa Fluor® 647. Images were taken using Leica stellaris 5. Protein abundance based on laser Intensity and smart gain: High. Scale bar, 20 μm .



Western blotting analysis using anti-ATP citrate lyase antibody 1:5,000 and HRP-conjugated goat anti-rabbit secondary antibody 1:20,000 respectively. Image was developed using FeQ™ ECL Substrate Kit .



Western blotting analysis using anti-ATP citrate lyase antibody 1:5,000 and HRP-conjugated goat anti-rabbit secondary antibody 1:20,000 respectively. Image was developed using FeQ™ ECL Substrate Kit .