



SunLong Biotech Co.,LTD  
Tel: 0086-571- 56623320 Fax:0086-571- 56623318  
E-mail:sales@sunlongbiotech.com  
www.sunlongbiotech.com

## [KD-Validated] Anti-ACSS2 Rabbit Monoclonal Antibody

Cat No.: KD-10041

### Aliases:

ACSS2; Acyl-CoA Synthetase Short Chain Family Member 2; ACS; DJ1161H23.1; ACAS2; ACSA; Acetyl-Coenzyme A Synthetase 2 (ADP Forming); Acetyl-Coenzyme A Synthetase, Cytoplasmic; Acetyl-CoA Synthetase 1; Acyl-Activating Enzyme; Propionate--CoA Ligase; EC 6.2.1.1; AceCS1; AceCS; ACECS; Acyl-CoA Synthetase Short-Chain Family Member 2; Cytoplasmic Acetyl-Coenzyme A Synthetase; Acetyl-CoA Synthetase; Acetate--CoA Ligase; Acetate Thiokinase; Acetate-CoA Ligase; EC 6.2.1.17; EC 6.2.1

### Background:

UniProt Entry: [Q9NR19](#);NCBI Gene Entry: [55902](#)

### Application Information

Molecular Weight: Predicted, 79 kDa, observed, 78 kDa Clonality: Rabbit monoclonal antibody Clone ID: 23GB1705 Species Reactivity: Human, Mouse, Rat Applications Tested: Western Blotting (WB), Flow Cytometry (FCM)

### Immunogen

A synthesized peptide derived from human ACSS2

### Isotype

Rabbit IgG

### Storage Buffer

Supplied in PBS (pH 7.4) containing 50% glycerol, and 0.02% sodium azide.

### Storage

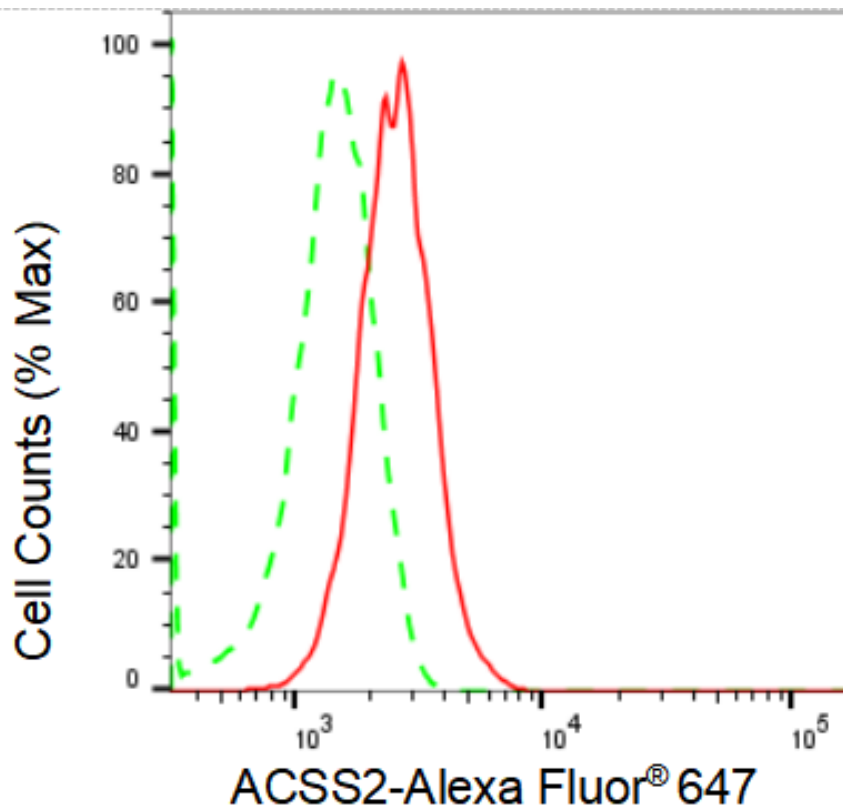
Store at -20 °C for one year.

### Recommended Dilutions

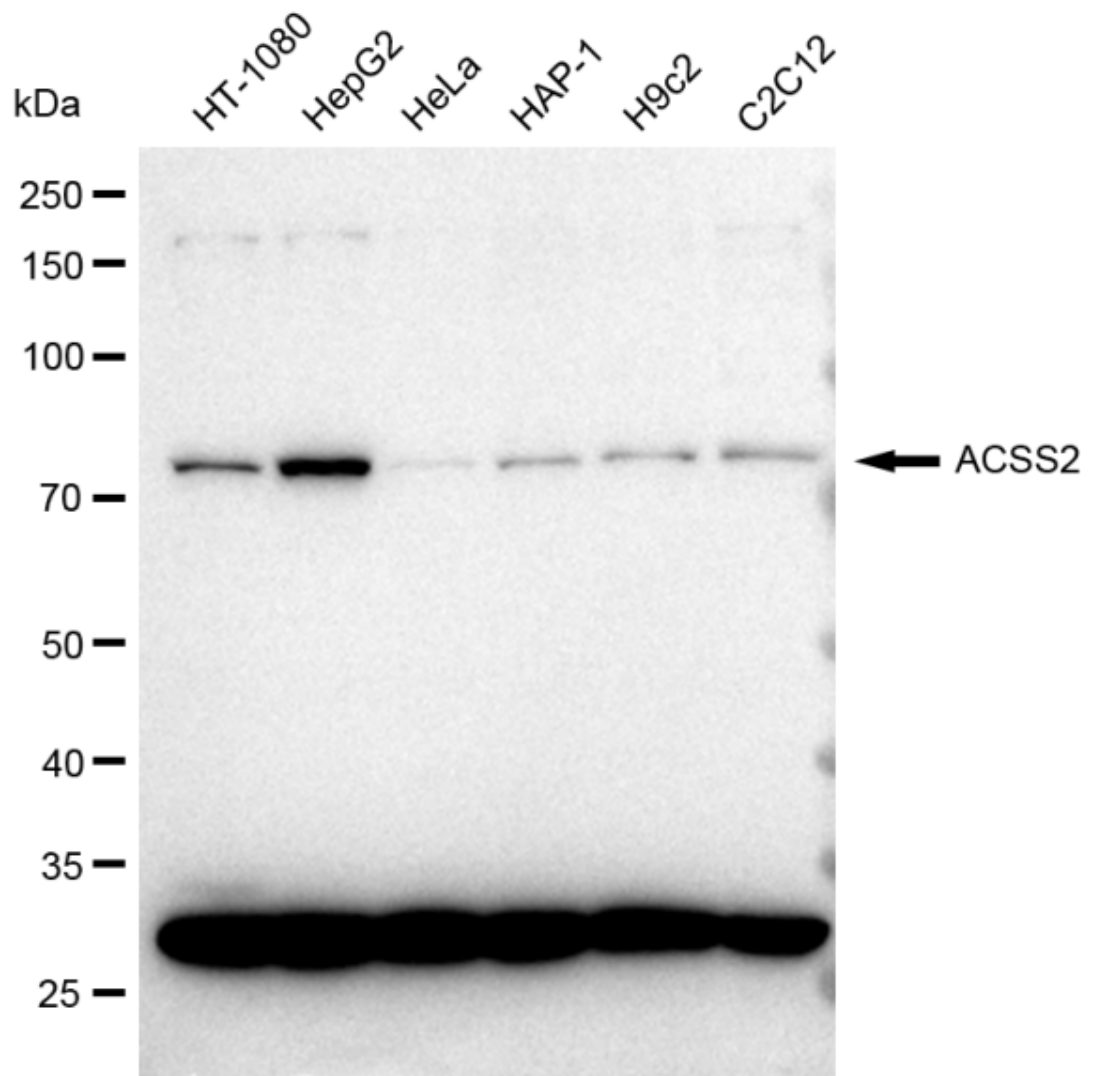
Western Blotting (WB): 1:1,000-1:2,500 Flow Cytometry (FCM): 1:2,000

### Protocols

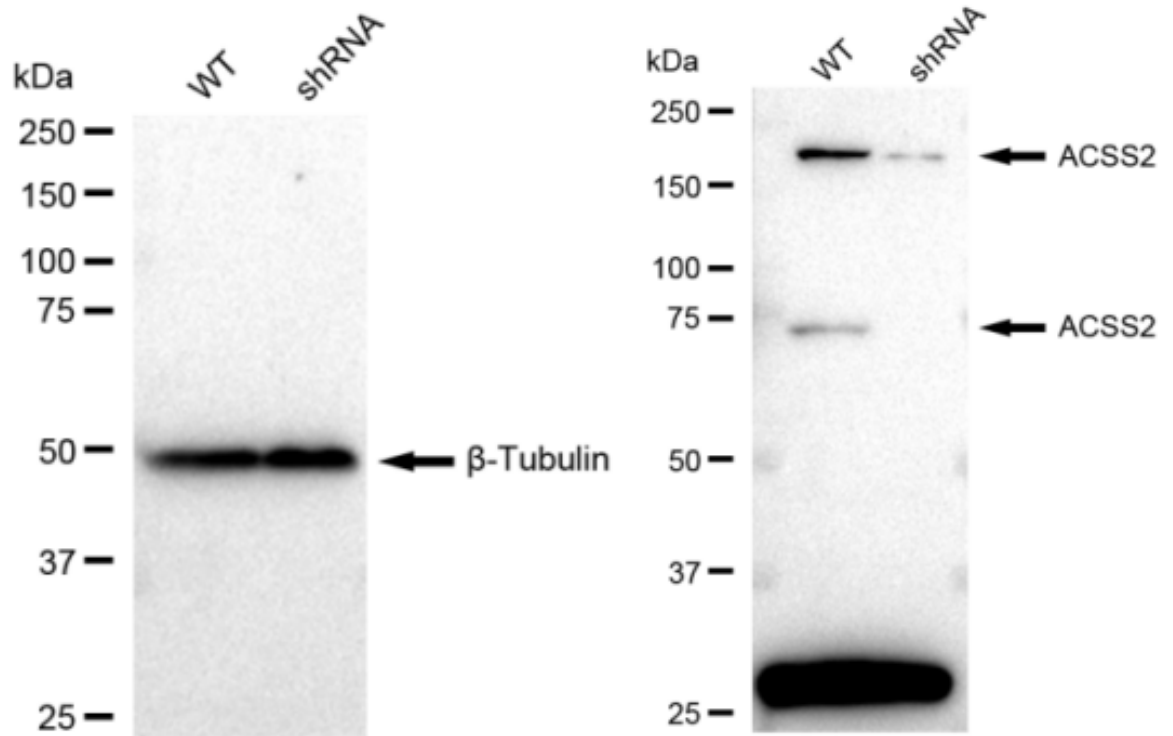
For general and specific antibody protocols please visit our website. Read all instructions before using this product.



Flow cytometric analysis of ACSS2 expression in HepG2 cells using ACSS2 antibody 1:2,000. Green, isotype control; red, ACSS2.



Western blotting analysis using anti-ACSS2 antibody 1:2,500 and HRP-conjugated goat anti-rabbit secondary antibody 1: 20,000 respectively. Image was developed using FeQ™ ECL Substrate Kit . ACSS2, acyl-CoA synthetase short chain family member 2.



Western blotting analysis using anti-ACSS2 antibody 1:5,000 and HRP-conjugated goat anti-rabbit secondary antibody 1:20,000 respectively. Image was developed using FeQ™ ECL Substrate Kit .