



SunLong Biotech Co.,LTD  
Tel: 0086-571- 56623320 Fax:0086-571- 56623318  
E-mail:sales@sunlongbiotech.com  
www.sunlongbiotech.com

## **[KD-Validated] Anti-Arp3 Rabbit Monoclonal Antibody**

Cat No.: KD-10043

### **Aliases:**

ACTR3; Actin Related Protein 3; ARP3; ARP3 Actin Related Protein 3 Homolog; Actin-Related Protein 3; Actin-Like Protein 3; ARP3 (Actin-Related Protein 3, Yeast) Homolog; ARP3 Actin-Related Protein 3 Homolog (Yeast)

### **Background:**

UniProt Entry: [PKD-10498](#);NCBI Gene Entry: [10096](#)

### **Application Information**

Molecular Weight: Predicted, 47 kDa, observed, 47 kDa Clonality: Rabbit monoclonal antibody Clone ID: 23GB615 Species Reactivity: Human Applications Tested: Western Blotting (WB), Flow Cytometry (FCM), Immunocytochemistry (IC)

### **Immunogen**

A synthesized peptide derived from human ACTR3

### **Isotype**

Rabbit IgG

### **Storage Buffer**

Supplied in PBS (pH 7.4) containing 50% glycerol, and 0.02% sodium azide.

### Storage

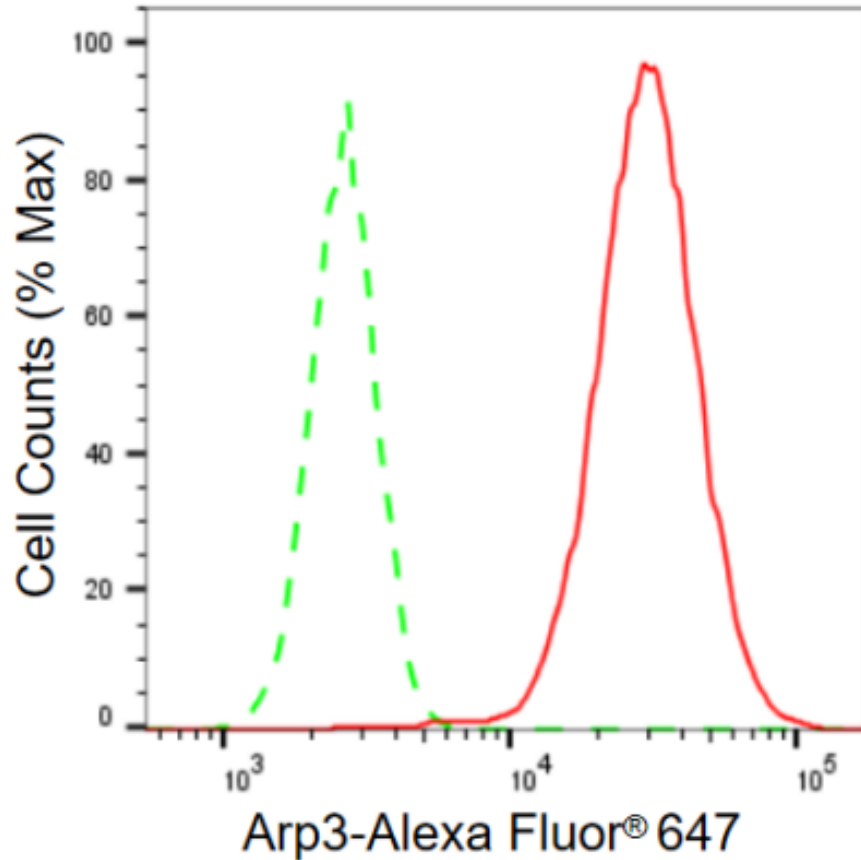
Store at -20 °C for one year.

### Recommended Dilutions

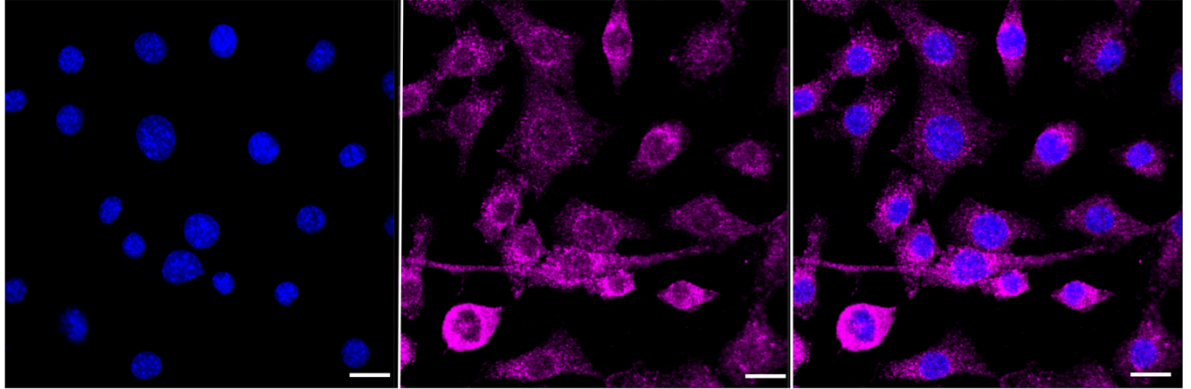
Western Blotting (WB): 1:1,000-1:5,000 Flow Cytometry (FCM): 1:2,000  
Immunocytochemistry (IC): 1:1,000

### Protocols

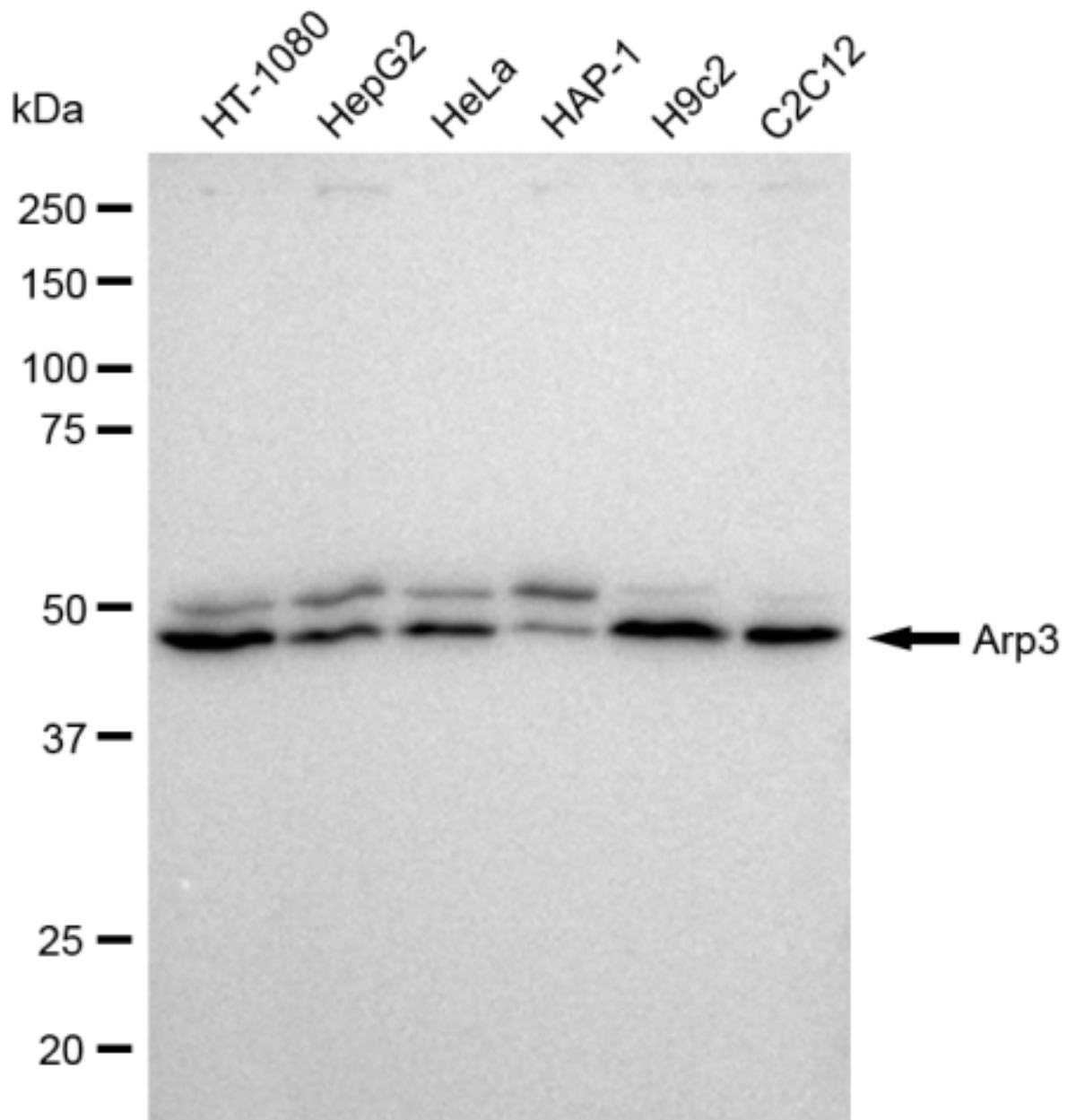
For general and specific antibody protocols please visit our website. Read all instructions before using this product.



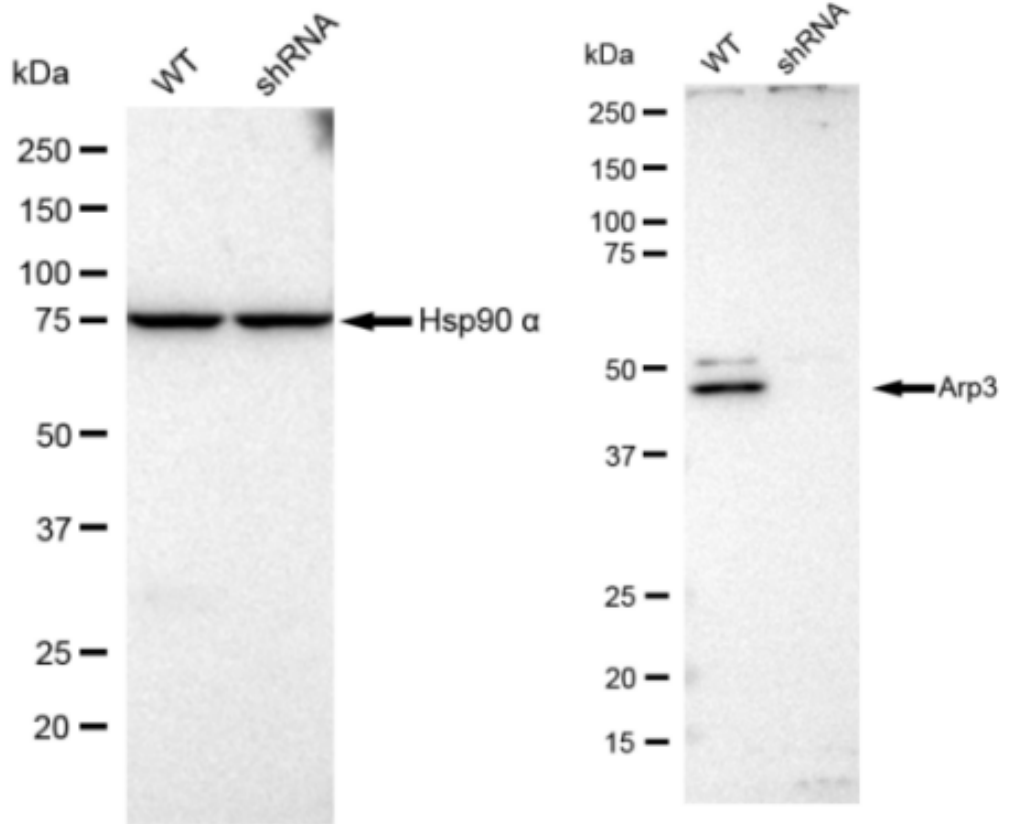
Flow cytometric analysis of Arp3 expression in C2C12 cells using Arp3 antibody 1:2,000. Green, isotype control; red, Arp3.



Immunocytochemical staining of C2C12 cells with Arp3 antibody 1:1,000. Nuclei were stained blue with DAPI; Arp3 was stained magenta with Alexa Fluor® 647. Images were taken using Leica stellaris 5. Protein abundance based on laser Intensity and smart gain: Medium. Scale bar: 20  $\mu\text{m}$ .



Western blotting analysis using anti-Arp3 antibody 1:5,000 and HRP-conjugated goat anti-rabbit secondary antibody 1:50,000 respectively. Image was developed using FeQ™ ECL Substrate Kit .



Western blotting analysis using anti-Arp3 antibody 1:5,000 and HRP-conjugated goat anti-rabbit secondary antibody 1:50,000 respectively. Image was developed using FeQ™ ECL Substrate Kit .