



SunLong Biotech Co.,LTD
Tel: 0086-571- 56623320 Fax:0086-571- 56623318
E-mail:sales@sunlongbiotech.com
www.sunlongbiotech.com

[KD-Validated] Anti-AdSS 2 Rabbit Monoclonal Antibody

Cat No.: KD-10048

Aliases:

ADSS2; Adenylosuccinate Synthase 2; ADSS; Adenylosuccinate Synthetase, Acidic Isozyme; Adenylosuccinate Synthetase, Liver Isozyme; Adenylosuccinate Synthetase Isozyme 2; L-Type Adenylosuccinate Synthetase; IMP--Aspartate Ligase 2; EC 6.3.4.4; AMPSase 2; Adenylosuccinate Synthetase (Ade(-)H-Complementing); Epididymis Secretary Sperm Binding Protein; Adenylosuccinate Synthase; ADSS 2; AdSS 2; ADEH

Background:

UniProt Entry: [P30520](#);NCBI Gene Entry: [159](#)

Application Information

Molecular Weight: Predicted, 50 kDa, observed, 45 kDa Clonality: Rabbit monoclonal antibody Clone ID: 23GB630 Species Reactivity: Human, Mouse, Rat Applications Tested: Western Blotting (WB), Flow Cytometry (FCM), Immunocytochemistry (IC)

Immunogen

A synthesized peptide derived from human ADSS2

Isotype

Rabbit IgG

Storage Buffer

Supplied in PBS (pH 7.4) containing 50% glycerol, and 0.02% sodium azide.

Storage

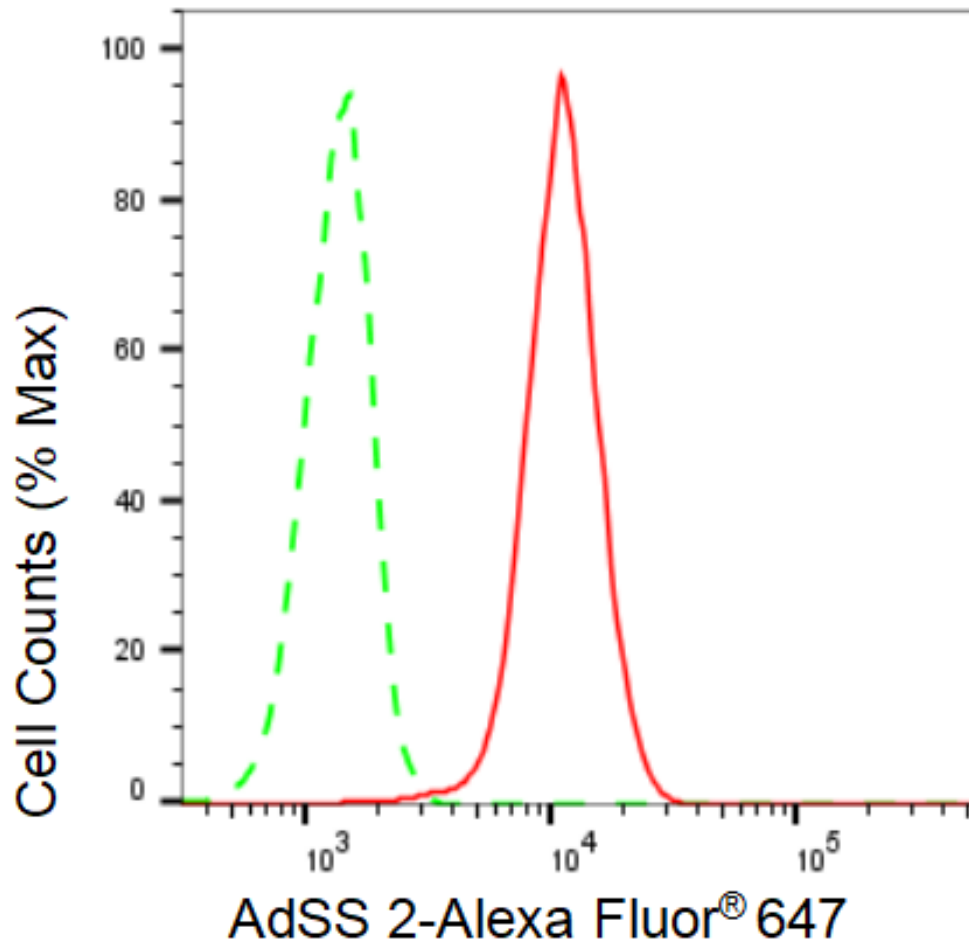
Store at -20 °C for one year.

Recommended Dilutions

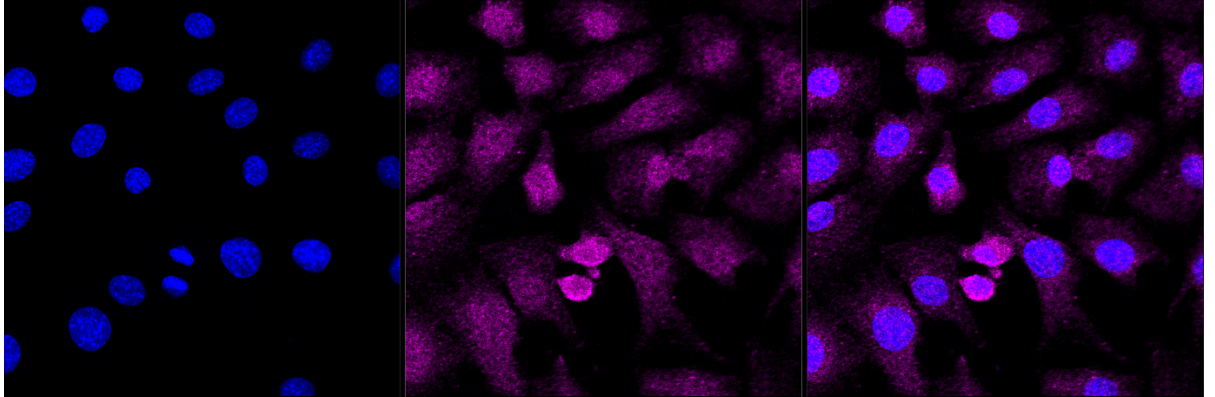
Western Blotting (WB): 1:1,000-1:5,000 Flow Cytometry (FCM): 1:2,000
Immunocytochemistry (IC): 1:1,000

Protocols

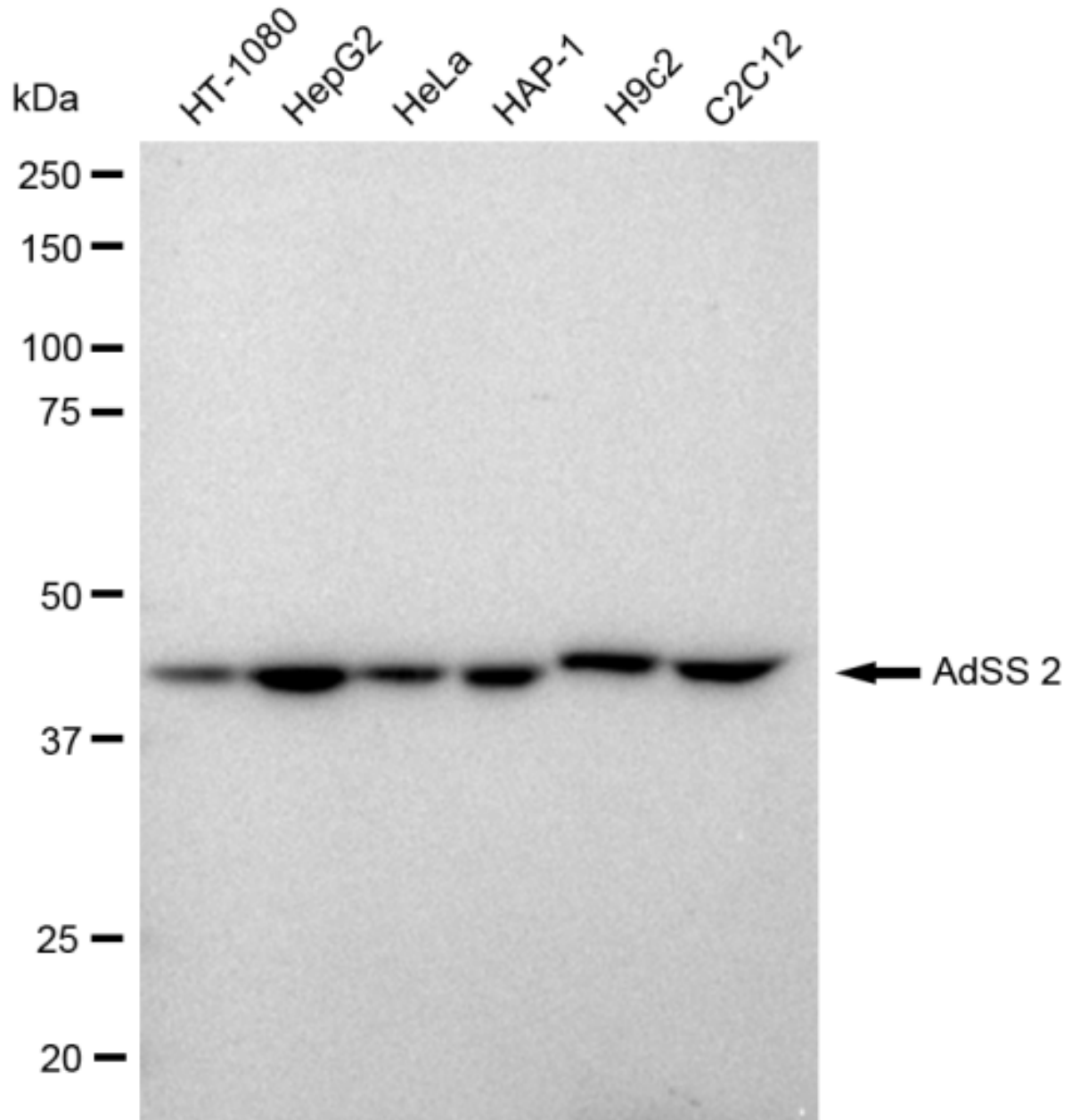
For general and specific antibody protocols please visit our website. Read all instructions before using this product.



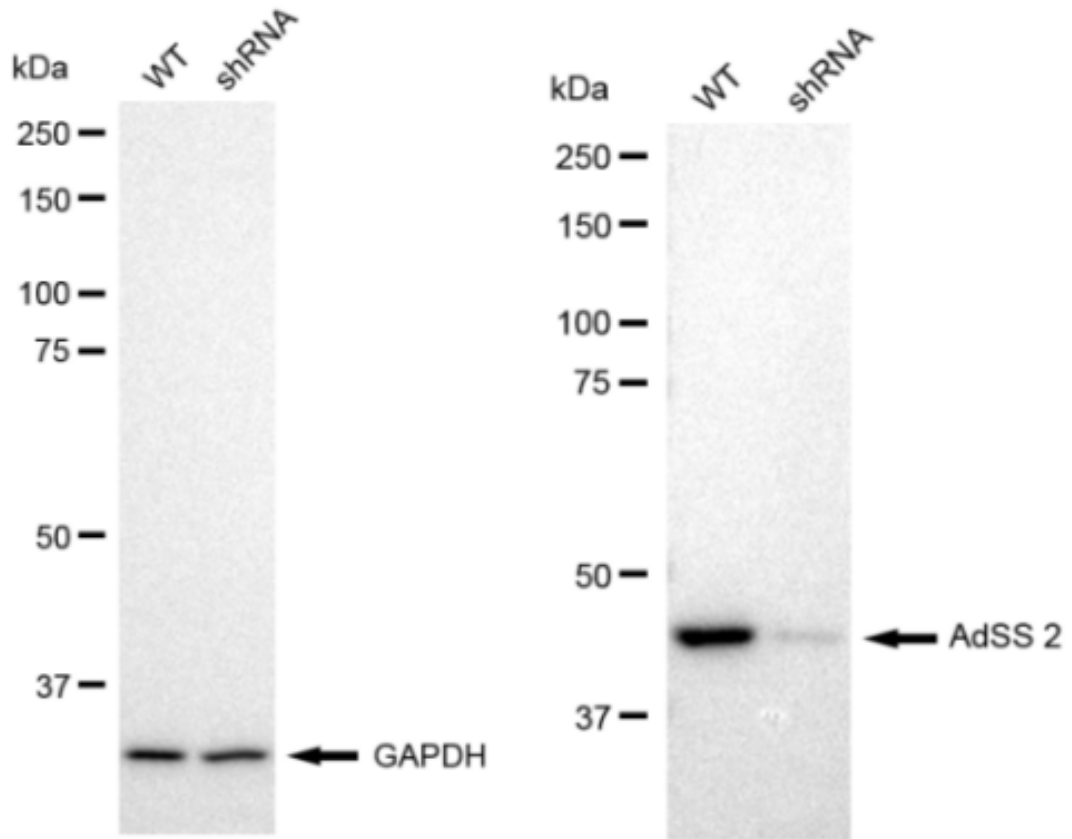
Flow cytometric analysis of AdSS 2 expression in C2C12 cells using AdSS 2 antibody 1:2,000. Green, isotype control; red, AdSS 2.



Immunocytochemical staining of C2C12 cells with AdSS 2 antibody 1:1,000. Nuclei were stained blue with DAPI; AdSS 2 was stained magenta with Alexa Fluor® 647. Images were taken using Leica stellaris 5. Protein abundance based on laser Intensity and smart gain: Very low. Scale bar: 20 μm .



Western blotting analysis using anti-AdSS 2 antibody 1:5,000 and HRP-conjugated goat anti rabbit secondary antibody 1:50,000 respectively. Image was developed using FeQ™ ECL Substrate Kit .



Western blotting analysis using anti-AdSS 2 antibody 1:5,000 and HRP-conjugated goat anti rabbit secondary antibody 1:50,000 respectively. Image was developed using FeQ™ ECL Substrate Kit .