



SunLong Biotech Co.,LTD
Tel: 0086-571- 56623320 Fax:0086-571- 56623318
E-mail:sales@sunlongbiotech.com
www.sunlongbiotech.com

[KD-Validated] Anti-alpha smooth muscle Actin Rabbit Monoclonal Antibody

Cat No.: KD-10949

Aliases:

ACTA2; Actin Alpha 2, Smooth Muscle; ACTSA; Cell Growth-Inhibiting Gene 46 Protein; Actin, Alpha 2, Smooth Muscle, Aorta; Actin, Aortic Smooth Muscle; Alpha-Cardiac Actin; Alpha-Actin-2; EC 3.6.4.-; ACTVS

Background:

UniProt Entry: [P62736](#);NCBI Gene Entry: [59](#)

Application Information

Molecular Weight: Predicted, 42 kDa, observed, 42 kDa Clonality: Rabbit monoclonal antibody Clone ID: 23GB600 Species Reactivity: Human, Mouse, Rat Applications Tested: Western Blotting (WB), Flow Cytometry (FCM), Immunocytochemistry (IC)

Immunogen

A synthesized peptide derived from human alpha smooth muscle Actin

Isotype

Rabbit IgG

Storage Buffer

Supplied in PBS (pH 7.4) containing 50% glycerol, and 0.02% sodium azide.

Storage

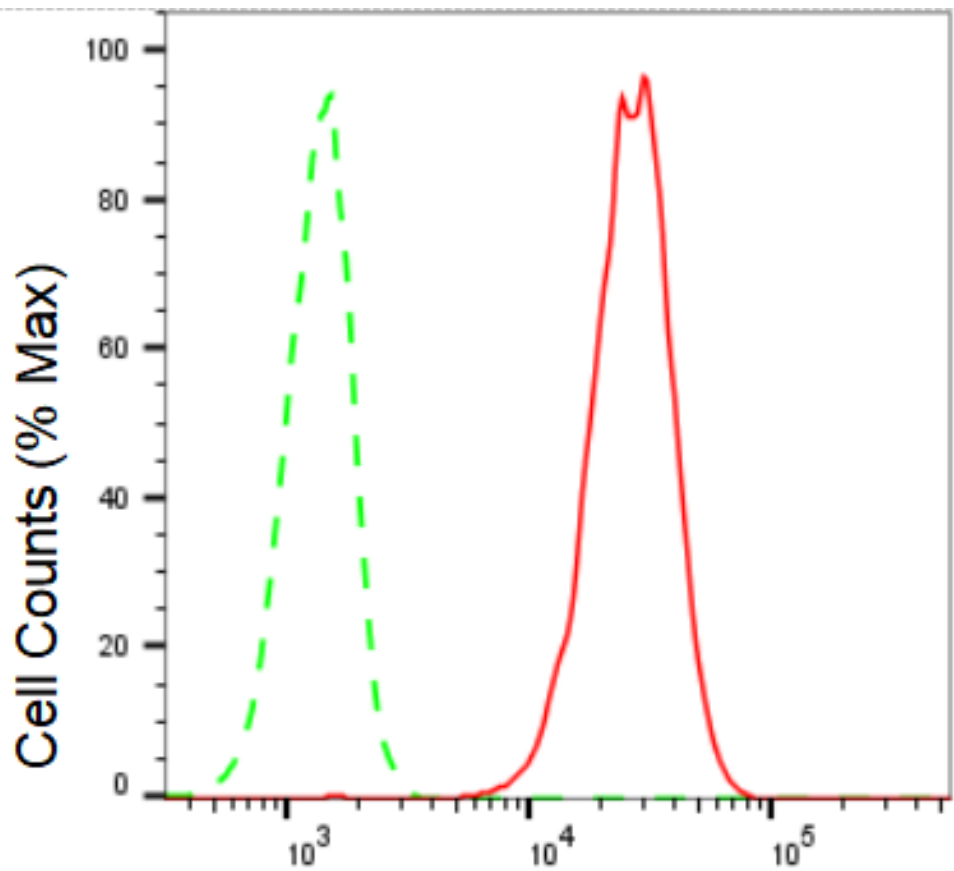
Store at -20 °C for one year.

Recommended Dilutions

Western Blotting (WB): 1:2,000-1:10,000 Flow Cytometry (FCM): 1:2,000
Immunocytochemistry (IC): 1:1,000

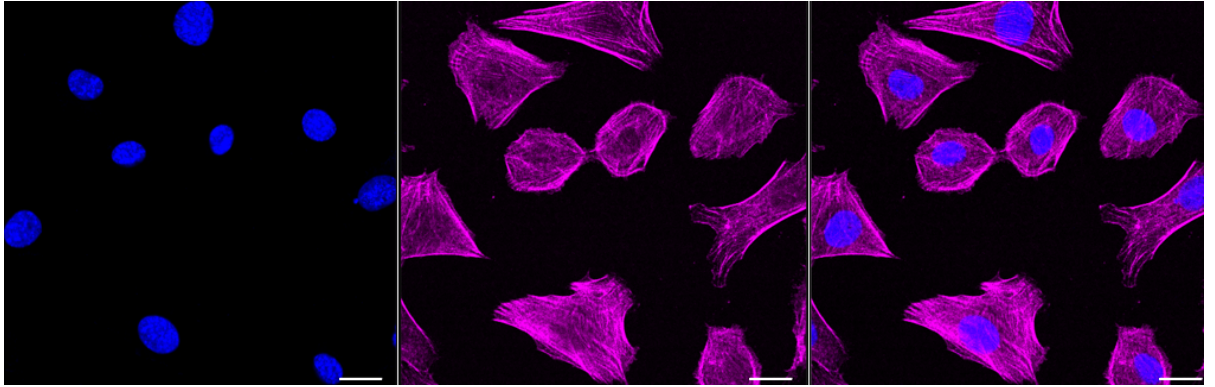
Protocols

For general and specific antibody protocols please visit our website. Read all instructions before using this product.

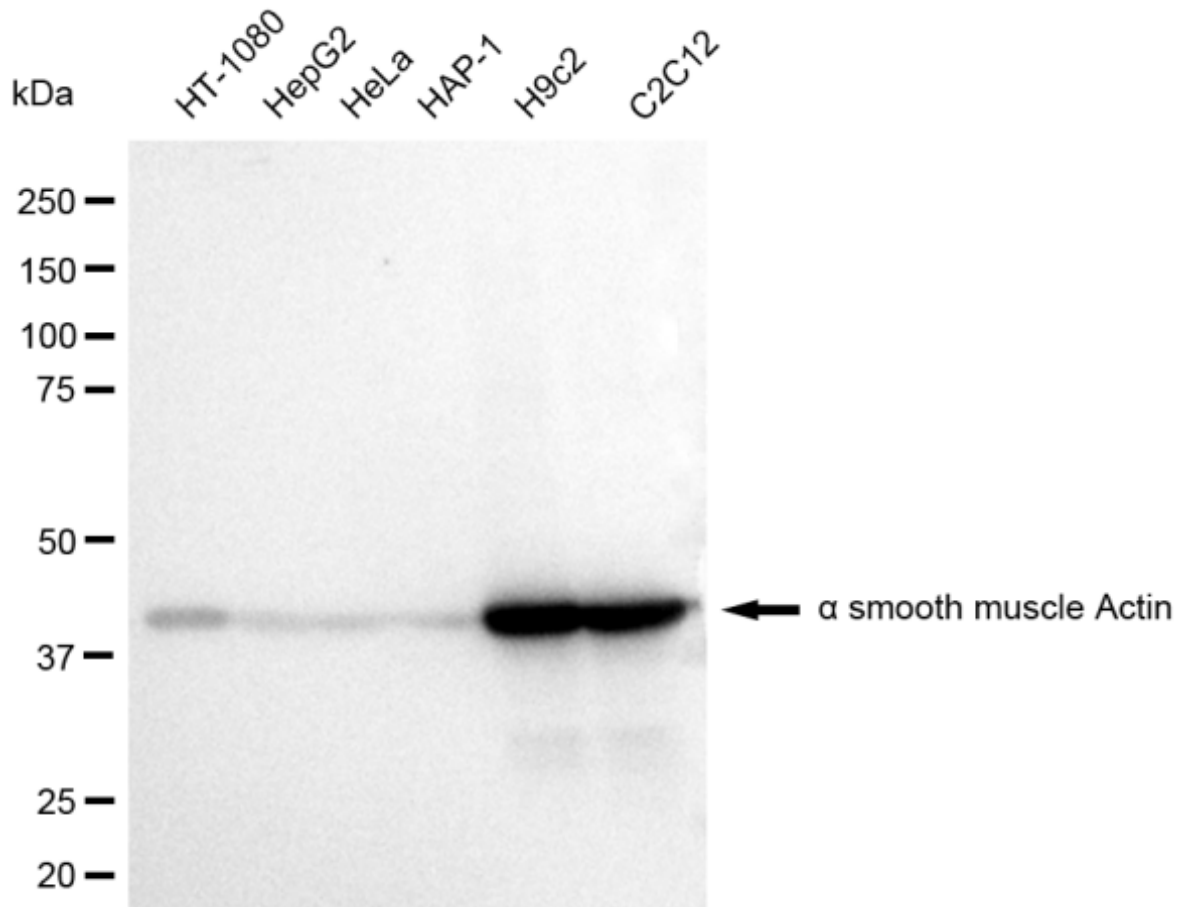


alpha smooth muscle Actin-Alexa Fluor® 647

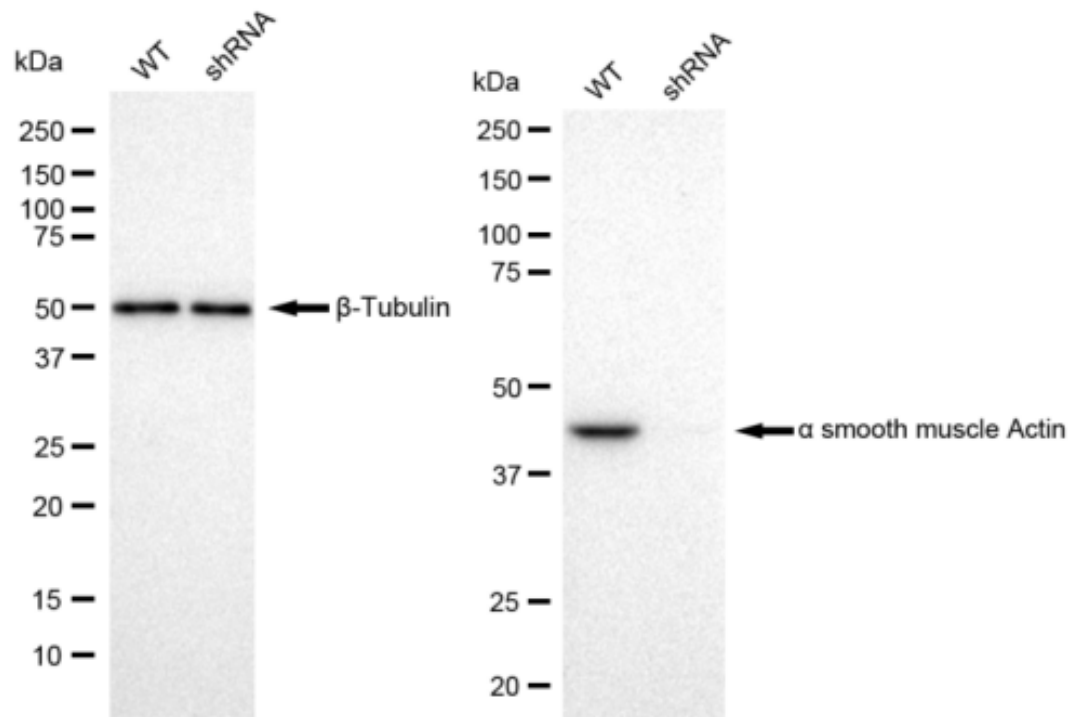
Flow cytometric analysis of alpha smooth muscle Actin expression in C2C12 cells using alpha smooth muscle Actin antibody 1:2,000. Green, isotype control; red, alpha smooth muscle Actin.



Immunocytochemical staining of C2C12 cells with alpha smooth muscle Actin antibody 1:1,000. Nuclei were stained blue with DAPI; alpha smooth muscle Actin was stained magenta with Alexa Fluor® 647. Images were taken using Leica stellaris 5. Protein abundance based on laser Intensity and smart gain: Medium. Scale bar: 20 μ m.



Western blotting analysis using anti-alpha smooth muscle Actin antibody 1:10,000 and HRP-conjugated goat anti-rabbit secondary antibody 1:50,000 respectively. Image was developed using FeQ™ ECL Substrate Kit .



Western blotting analysis using anti-alpha smooth muscle Actin antibody 1:10,000 and HRP-conjugated goat anti-rabbit secondary antibody 1:20,000 respectively. Image was developed using FeQ™ ECL Substrate Kit .