



SunLong Biotech Co.,LTD  
Tel: 0086-571- 56623320 Fax:0086-571- 56623318  
E-mail:sales@sunlongbiotech.com  
www.sunlongbiotech.com

## [KD-Validated] Anti-Actin like 6A Rabbit Monoclonal Antibody

Cat No.: KD-10951

### Aliases:

ACTL6A; Actin Like 6A; BAF53A; INO80K; BRG1-Associated Factor 53A; INO80 Complex Subunit K; SMARCN1; 53 KDa BRG1-Associated Factor A; Actin-Related Protein Baf53a; BAF Complex 53 KDa Subunit; Actin-Related Protein; Actin-Like Protein 6A; ArpNbeta; ACTL6; BAF53; Arp4; HArpN Beta; ARPN-BETA; Baf53a; Actl6; ARP4

### Background:

UniProt Entry: [O96019](#);NCBI Gene Entry: [86](#)

### Application Information

Molecular Weight: Predicted, 47 kDa, observed, 47 kDa Clonality: Rabbit monoclonal antibody Clone ID: 23GB1155 Species Reactivity: Human, Mouse, Rat Applications Tested: Western Blotting (WB), Flow Cytometry (FCM), Immunocytochemistry (IC)

### Immunogen

A synthesized peptide derived from human ACTL6A

### Isotype

Rabbit IgG

### Storage Buffer

Supplied in PBS (pH 7.4) containing 50% glycerol, and 0.02% sodium azide.

### Storage

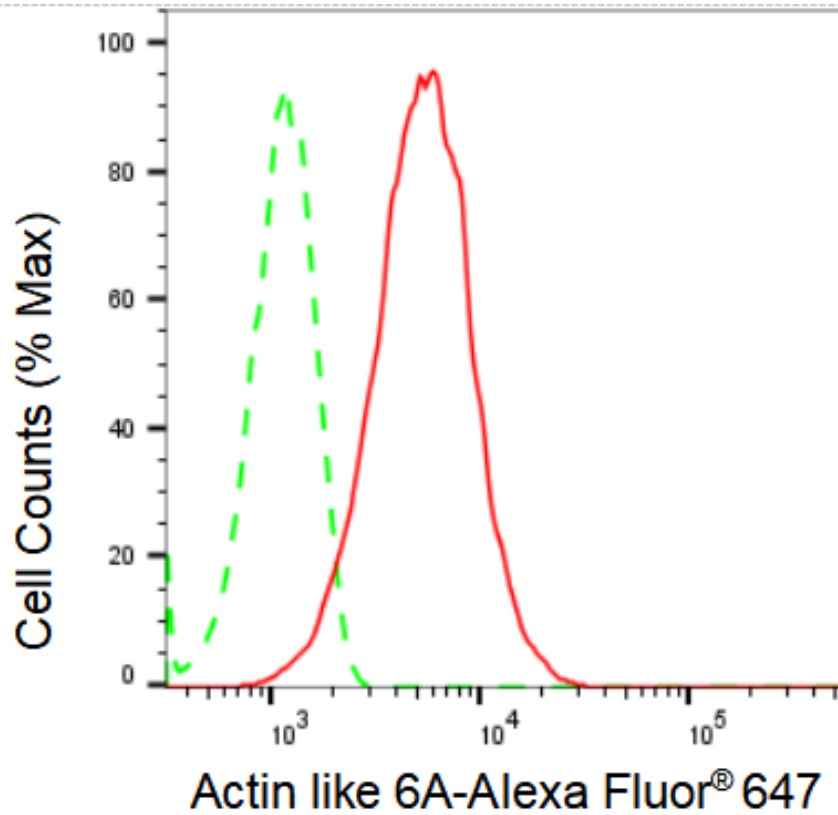
Store at -20 °C for one year.

### Recommended Dilutions

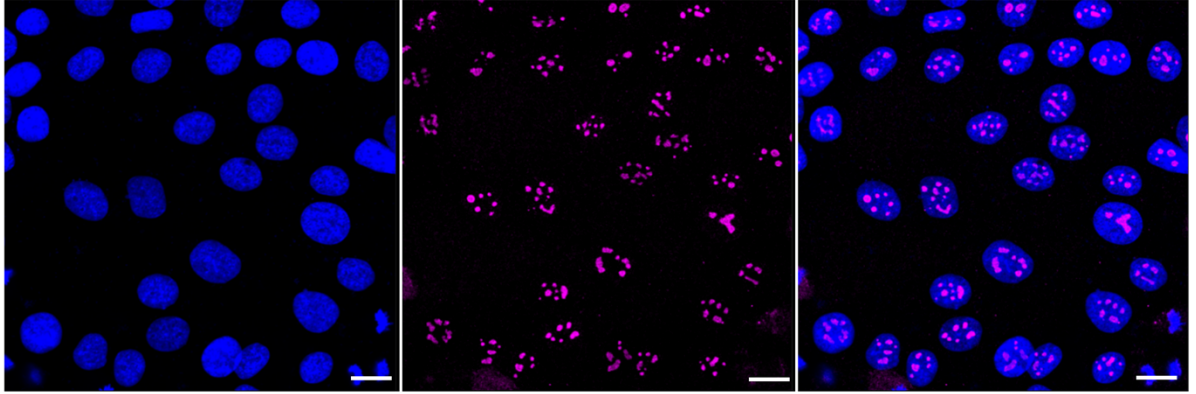
Western Blotting (WB): 1:1,000-1:5,000 Flow Cytometry (FCM): 1:2,000  
Immunocytochemistry (IC): 1:1,000

### Protocols

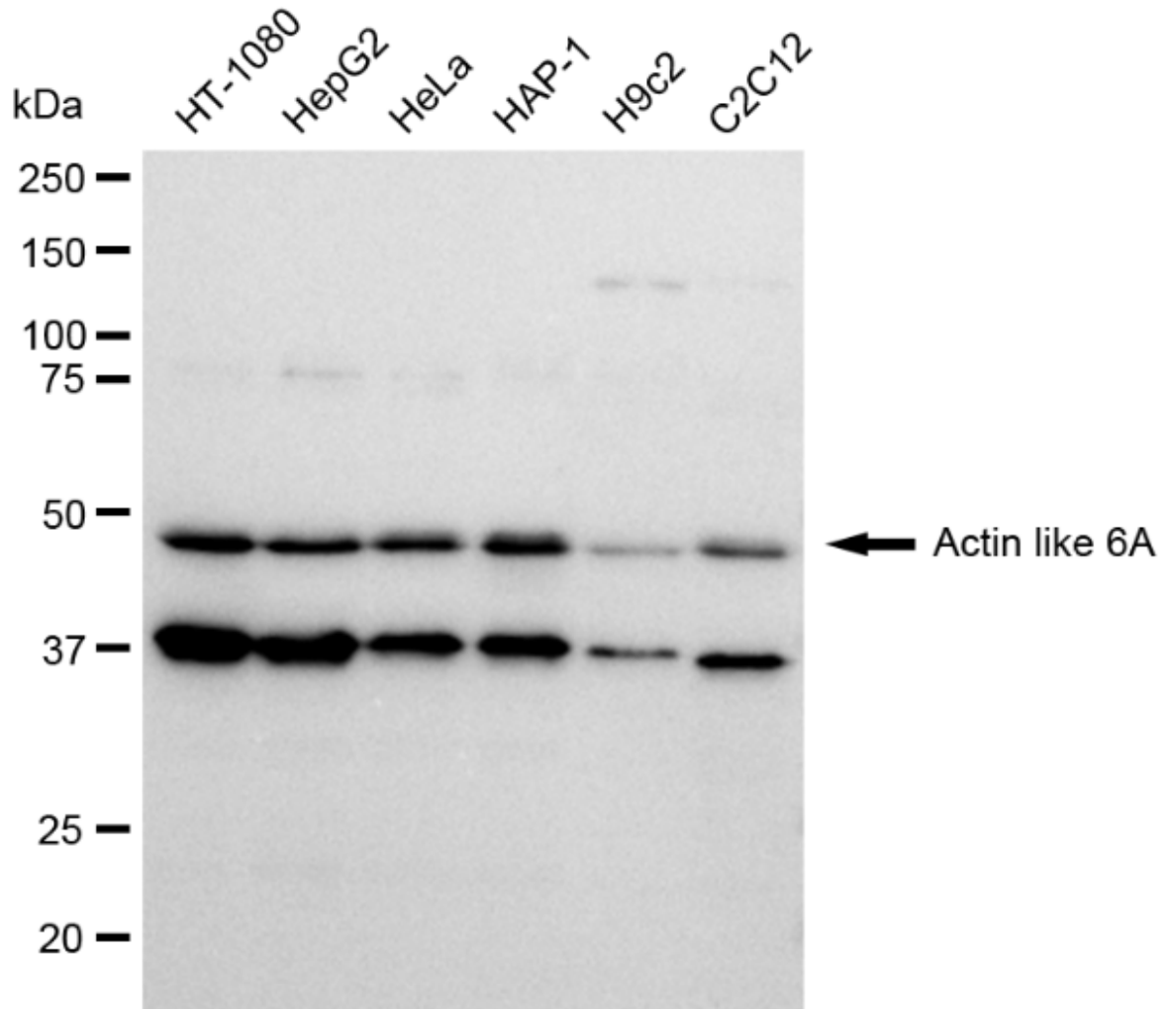
For general and specific antibody protocols please visit our website. Read all instructions before using this product.



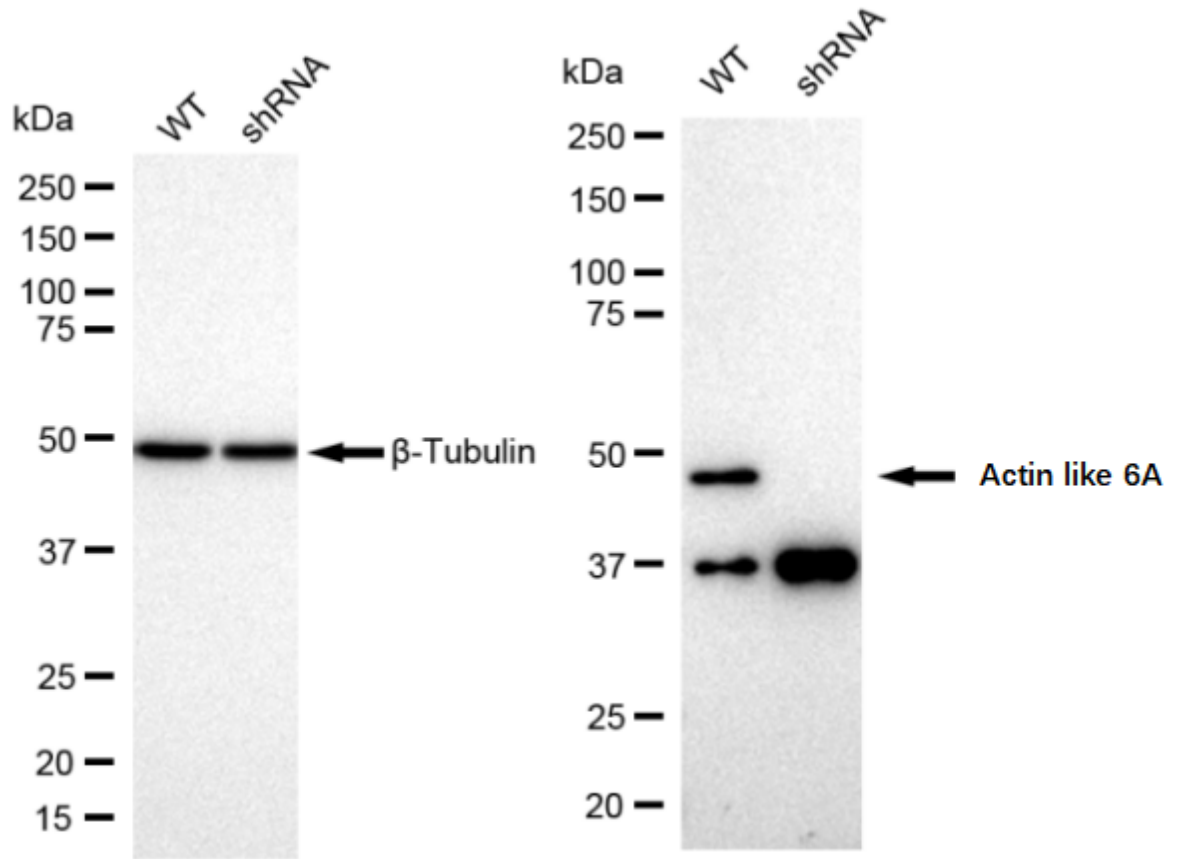
Flow cytometric analysis of Actin like 6A expression in HepG2 cells using Actin like 6A antibody 1:2,000. Green, isotype control; red, Actin like 6A.



Immunocytochemical staining of HT-1080 cells with Actin like 6A antibody 1:1,000. Nuclei were stained blue with DAPI; Actin like 6A was stained magenta with Alexa Fluor® 647. Images were taken using Leica stellaris 5. Protein abundance based on laser Intensity and smart gain: Medium. Scale bar: 20  $\mu$ m.



Western blotting analysis using anti-Actin like 6A antibody 1:5,000 and HRP-conjugated goat anti-rabbit secondary antibody 1:20,000 respectively. Image was developed using FeQ™ ECL Substrate Kit .



Western blotting analysis using anti-Actin like 6A antibody 1:5,000 and HRP-conjugated goat anti-rabbit secondary antibody 1:20,000 respectively. Image was developed using FeQ™ ECL Substrate Kit .