

Rabbit Anti-Nestin antibody

SL0008R

Product Name:	Nestin
Chinese Name:	巢蛋白/神经上皮Stem cells蛋白抗体
Alias:	ESTM 46; FLJ 21841; FLJ21841; Intermediate filament protein; Nbla00170; Nes; NEST_RAT; Nestin.
文献引用 PubMed :	<p>Specific References(3) SL0008R has been referenced in 3 publications.</p> <p>[IF=3.17]Liu, Yang, et al. "Amelioration of Stroke-Induced Neurological Deficiency by Lyophilized Powder of Catapol and Puerarin." International Journal of Biological Sciences 10.4 (2014): 448-456.IHC-P;Mouse. PubMed:24719562</p> <p>[IF=1.64]Shan, Tengfei, et al. "Lithium chloride promotes the odontoblast differentiation of hair follicle neural crest cells by activating Wnt/β-catenin signaling." Cell Biology International (2014).IF(ICC);Mouse. PubMed:25044369</p> <p>[IF=0.97]Kawashima, Satoki, Koichi SHINKAI, and Masaya SUZUKI. "Effect of an experimental adhesive resin containing multi-ion releasing fillers on direct pulp-capping." Dental Materials Journal 35.3 (2016): 479-489.IHC-P;Rat. PubMed:27252005</p>
Organism Species:	Rabbit
Clonality:	Polyclonal
React Species:	Mouse,Rat,
Applications:	ELISA=1:500-1000IHC-P=1:400-800IHC-F=1:400-800Flow-Cyt=1 μ g/Test IF=1:100-500 (Paraffin sections need antigen repair) not yet tested in other applications. optimal dilutions/concentrations should be determined by the end user.

Molecular weight:	209kDa
Cellular localization:	cytoplasmic
Form:	Lyophilized or Liquid
Concentration:	1mg/ml
immunogen:	KLH conjugated synthetic peptide derived from rat Nestin:681-750/1893
Lsotype:	IgG
Purification:	affinity purified by Protein A
Storage Buffer:	0.01M TBS(pH7.4) with 1% BSA, 0.03% Proclin300 and 50% Glycerol.
Storage:	Store at -20 °C for one year. Avoid repeated freeze/thaw cycles. The lyophilized antibody is stable at room temperature for at least one month and for greater than a year when kept at -20°C. When reconstituted in sterile pH 7.4 0.01M PBS or diluent of antibody the antibody is stable for at least two weeks at 2-4 °C.
PubMed:	PubMed
Product Detail:	<p>Nestin is a Class VI intermediate filament expressed in the developing central nervous system (CNS) in early embryonic neuroepithelial stem cells. This protein has been widely used as a predominant marker for stem / progenitor cells, glioma cells, and tumor endothelial cells in the mammalian CNS. Furthermore, it is a superior angiogenic marker to evaluate neovascularity of endothelial cells in tumor.</p> <p>Function: Required for brain and eye development (By similarity). Promotes the disassembly of phosphorylated vimentin intermediate filaments (IF) during mitosis and may play a role in the trafficking and distribution of IF proteins and other cellular factors to daughter cells during progenitor cell division. Required for survival, renewal and mitogen-stimulated proliferation of neural progenitor cells.</p> <p>Subunit: Forms homodimers and homotetramers in vitro. In mixtures with other intermediate filament proteins such as vimentin and alpha-internexin, this protein preferentially forms heterodimers which can assemble to form intermediate filaments if nestin does not exceed 25%. Interacts with FHOD3.</p> <p>Subcellular Location: cytoplasm</p> <p>Tissue Specificity: CNS stem cells.</p> <p>Post-translational modifications: Constitutively phosphorylated. This increases during mitosis when the cytoplasmic intermediate filament network is reorganized.</p> <p>Similarity: Belongs to the intermediate filament family.</p> <p>SWISS:</p>

P21263

Gene ID:
25491

Database links:

[Entrez Gene: 10763](#)Human

[Entrez Gene: 18008](#)Mouse

[Entrez Gene: 25491](#)Rat

[Omin: 600915](#)Human

[SwissProt: P48681](#)Human

[SwissProt: Q6P5H2](#)Mouse

[SwissProt: P21263](#)Rat

[Unigene: 527971](#)Human

[Unigene: 331129](#)Mouse

[Unigene: 9701](#)Rat

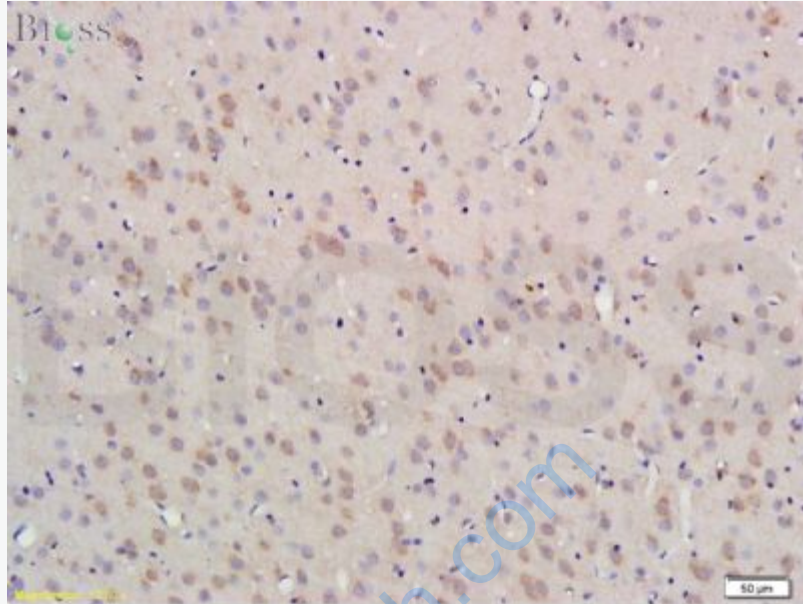
Important Note:

This product as supplied is intended for research use only, not for use in human, therapeutic or diagnostic applications.

神经Stem cellsMaker

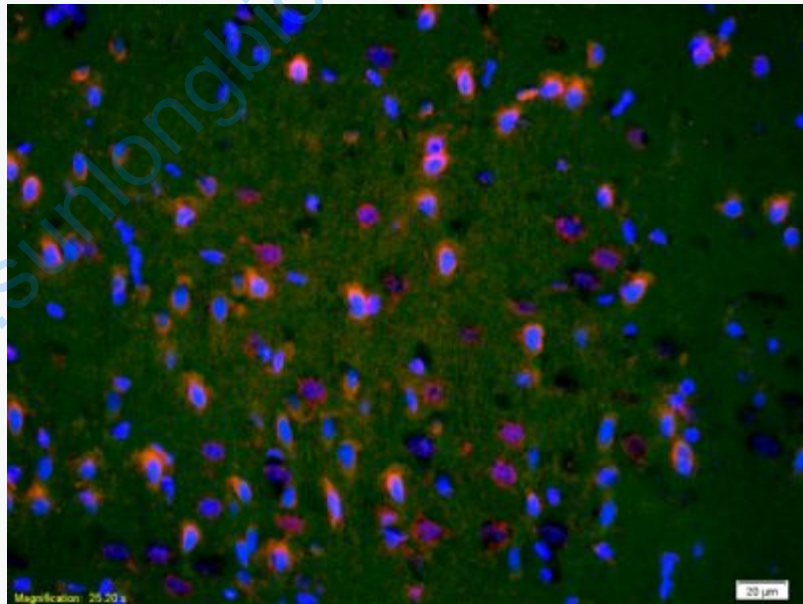
在动物体早期发育过程中，中枢神经系统发育尤为重要

。Nestin是一种中等纤维蛋白，它在哺乳动物神经前体细胞中表达较高，目前已被广泛用于神经前体细胞的重要标志分子。研究Nestin的表达调控规律，将有助于人们认识神经前体细胞的生物特性。此抗体还表达中枢神经系统Stem cells及神经epithelial cells。



bs-0008R Anti-Nestin

Formalin-fixed and paraffin-embedded rat brain tissue labeled with Rabbit Anti-Nestin Polyclonal Antibody, Unconjugated(bs-0008R) at 1:300 followed by conjugation to the secondary antibody and DAB staining

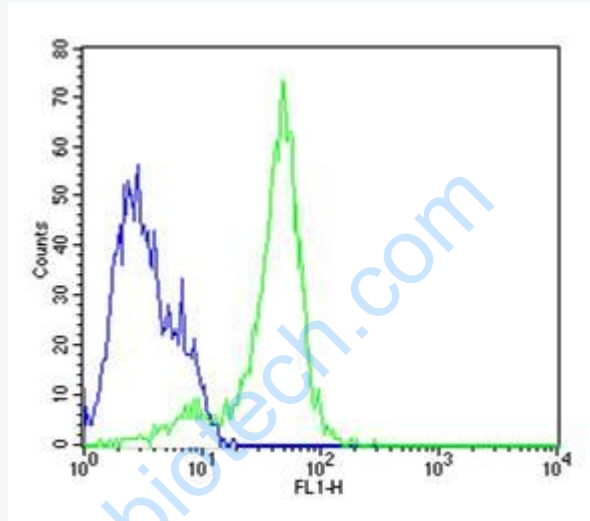


Picture:

Tissue/cell: rat brain tissue;4% Paraformaldehyde-fixed and paraffin-embedded;
Antigen retrieval: citrate buffer (0.01M, pH 6.0), Boiling bathing for 15min;
Blocking buffer (normal goat serum,C-0005) at 37°C for 20 min;
Incubation: Anti-Nestin Polyclonal Antibody, Unconjugated(SL0008R) 1:200,

overnight at 4°C; The secondary antibody was Goat Anti-Rabbit IgG, Cy3 conjugated(SL0008R)used at 1:200 dilution for 40 minutes at 37°C.

DAPI(5ug/ml,blue,C-0033) was used to stain the cell nuclei



Cell: Neuro-2a

Concentration: 1:100

Host/Isotype: Rabbit/IgG

Flow cytometric analysis of Rabbit IgG isotype control on Neuro-2a(blue) compared with primary antibody(Cat#: bs-0008R)(green) followed by Alexa Fluor 488-conjugated goat anti-rabbit IgG(H+L) secondary antibody .