



## Rabbit Anti-IGF 1 antibody

SL0014R

<b>Product Name:</b>	IGF 1
<b>Chinese Name:</b>	胰岛素样生长因子1抗体
<b>Alias:</b>	IBP1; IGF 1; IGF I; IGF-1;IGF IA; IGF IB; IGF1; IGFI; IGFI A; Insulin like growth factor 1 (somatomedin C); Full=Insulin-like growth factor I; Insulin Like Growth Factor 1; Insulin like growth factor IA; Insulin like growth factor IB; Mechano growth factor; MGF; Mechano growth factor; MGF; Somatomeidia C; Somatomedin C; IGF1_HUMAN.
<b>文献引用</b> PubMed :	<p><b>Specific References(6)</b>SL0014R has been referenced in 6 publications.</p> <p><b>[IF=1.06]</b>Baykara, B., et al. "Progesterone treatment decreases traumatic brain injury induced anxiety and is correlated with increased serum IGF-1 levels; prefrontal cortex, amygdala, hippocampus neuron density; and reduced serum corticosterone levels in immature rats." Biotechnic &amp; Histochemistry 0 (2013): 1-8.<b>Rat.</b>  <a href="#">PubMed:23480228</a></p> <p><b>[IF=1.06]</b>Kiray, M., et al. "Effects of carbon dioxide exposure on early brain development in rats." Biotechnic &amp; Histochemistry 0 (2014): 1-13.<b>IHC-P;Rat.</b>  <a href="#">PubMed:24476563</a></p> <p><b>[IF=0.48]</b>Gabr, Hala, et al. "The effect of bone marrow-derived mesenchymal stem cells on chemotherapy induced ovarian failure in albino rats." Microscopy Research and Technique (2016).<b>IHC-P;Rat.</b>  <a href="#">PubMed:27453009</a></p> <p><b>[IF=0.00]</b>Liao, Wei-Tao, et al. "The effect of celastrol on learning and memory in diabetic rats after sevoflurane inhalation." (2016).<b>IHC-P;Rat.</b>  <a href="#">PubMed:0</a></p>

	<p><b>[IF=1.21]</b>Müller, L., et al. "Different expression of leptin and IGF1 in the adult and prepubertal testis in dogs." <i>Reproduction in Domestic Animals</i> (2017).<b>IHC-P;Dog.</b>  <a href="#">PubMed:0</a></p> <p><b>[IF=1.80]</b>Uysal, Nazan, et al. "Exercise increases leptin levels correlated with IGF-1 in hippocampus and prefrontal cortex of adolescent male and female rats." <i>Journal of Chemical Neuroanatomy</i> (2017).<b>IHC-P;Rat.</b>  <a href="#">PubMed:28179125</a></p>
<b>Organism Species:</b>	Rabbit
<b>Clonality:</b>	Polyclonal
<b>React Species:</b>	Human,Mouse,Rat,Dog,Pig,Cow,Rabbit,Sheep,
<b>Applications:</b>	WB=1:500-2000ELISA=1:500-1000IP=1:20-100IHC-P=1:400-800IHC-F=1:400-800IF=1:100-500 (Paraffin sections need antigen repair) not yet tested in other applications. optimal dilutions/concentrations should be determined by the end user.
<b>Molecular weight:</b>	7.7/21kDa
<b>Cellular localization:</b>	Secretory protein
<b>Form:</b>	Lyophilized or Liquid
<b>Concentration:</b>	1mg/ml
<b>immunogen:</b>	KLH conjugated synthetic peptide derived from human IGF-1:49-100/195
<b>Lsotype:</b>	IgG
<b>Purification:</b>	affinity purified by Protein A
<b>Storage Buffer:</b>	0.01M TBS(pH7.4) with 1% BSA, 0.03% Proclin300 and 50% Glycerol.
<b>Storage:</b>	Store at -20 °C for one year. Avoid repeated freeze/thaw cycles. The lyophilized antibody is stable at room temperature for at least one month and for greater than a year when kept at -20°C. When reconstituted in sterile pH 7.4 0.01M PBS or diluent of antibody the antibody is stable for at least two weeks at 2-4 °C.
<b>PubMed:</b>	<a href="#">PubMed</a>
<b>Product Detail:</b>	<p>The protein encoded by this gene is similar to insulin in function and structure and is a member of a family of proteins involved in mediating growth and development. The encoded protein is processed from a precursor, bound by a specific receptor, and secreted. Defects in this gene are a cause of insulin-like growth factor I deficiency. Several transcript variants encoding different isoforms have been found for this gene.[provided by RefSeq, Mar 2009]</p> <p><b>Function:</b> The insulin-like growth factors, isolated from plasma, are structurally and functionally related to insulin but have a much higher growth-promoting activity. May be a physiological regulator of [1-14C]-2-deoxy-D-glucose (2DG) transport and glycogen synthesis in osteoblasts. Stimulates glucose transport in rat bone-derived osteoblastic (PyMS) cells and is effective at much lower concentrations than insulin, not only regarding glycogen and DNA synthesis but also with regard to enhancing glucose uptake.</p>

**Subcellular Location:**

Secreted.

**DISEASE:**

Defects in IGF1 are the cause of insulin-like growth factor I deficiency (IGF1 deficiency) [MIM:608747]. IGF1 deficiency is an autosomal recessive disorder characterized by growth retardation, sensorineural deafness and mental retardation.

**Similarity:**

Belongs to the insulin family.

**SWISS:**

P05019

**Gene ID:**

3479

**Database links:**

[Entrez Gene: 3479](#)Human

[Omin: 147440](#)Human

[SwissProt: P05019](#)Human

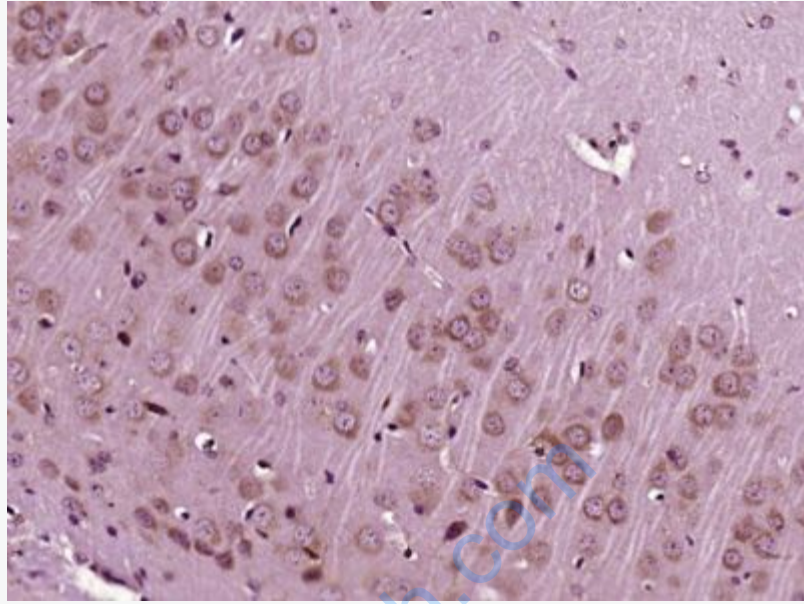
[Unigene: 160562](#)Human

**Important Note:**

This product as supplied is intended for research use only, not for use in human, therapeutic or diagnostic applications.

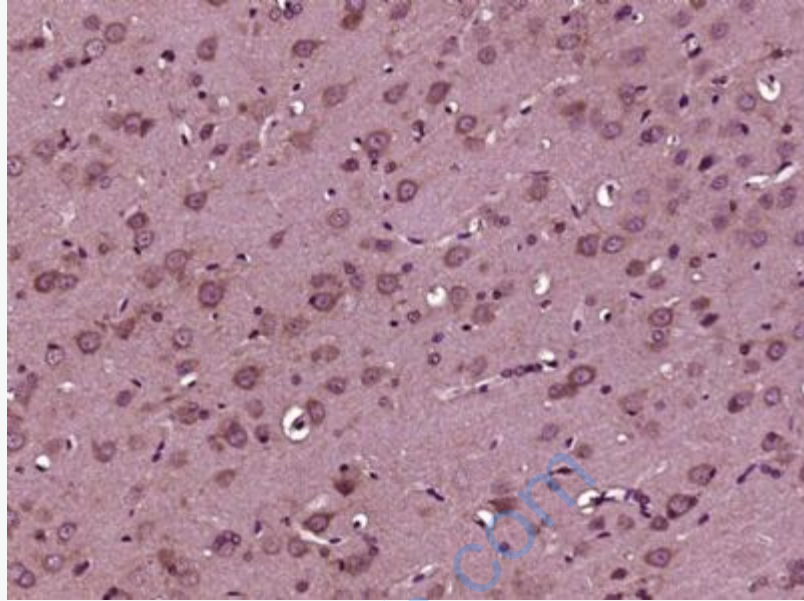
**胰岛素样生长因子1(IGF-**

**1)**是一种生长调节激素,由肝分泌并入血液循环的中性多肽,具有调节生长和代谢、胰岛素样及促细胞分裂的活性,主要作用于成人。

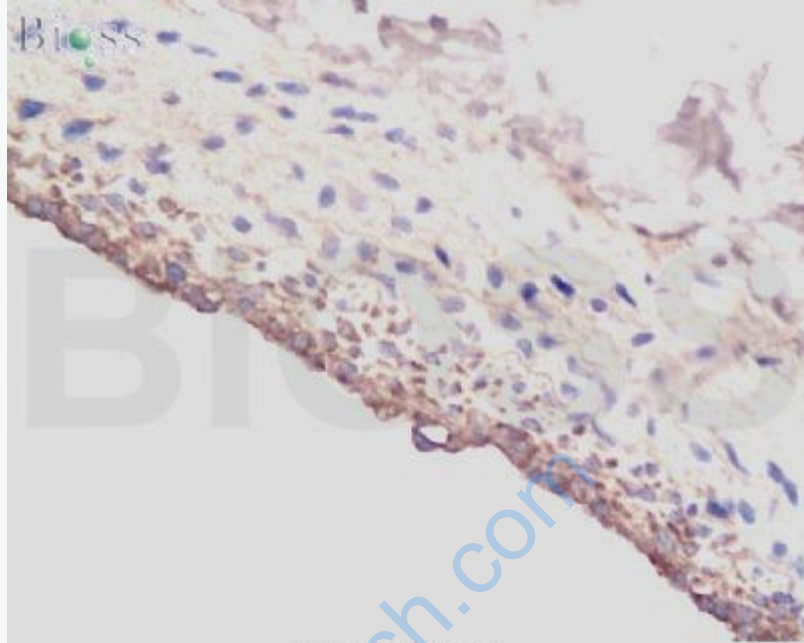


**Picture:**

Paraformaldehyde-fixed, paraffin embedded (Mouse brain); Antigen retrieval by boiling in sodium citrate buffer (pH6.0) for 15min; Block endogenous peroxidase by 3% hydrogen peroxide for 20 minutes; Blocking buffer (normal goat serum) at 37°C for 30min; Antibody incubation with (IGF 1) Polyclonal Antibody, Unconjugated (SL0014R) at 1:400 overnight at 4°C, followed by operating according to SP Kit(Rabbit) (sp-0023) instructions and DAB staining.



Paraformaldehyde-fixed, paraffin embedded (Rat brain); Antigen retrieval by boiling in sodium citrate buffer (pH6.0) for 15min; Block endogenous peroxidase by 3% hydrogen peroxide for 20 minutes; Blocking buffer (normal goat serum) at 37°C for 30min; Antibody incubation with (IGF 1) Polyclonal Antibody, Unconjugated (SL0014R) at 1:400 overnight at 4°C, followed by operating according to SP Kit(Rabbit) (sp-0023) instructions and DAB staining.



**bs-0014R Anti-IGF-I**

Formalin-fixed and paraffin-embedded rat Carotid artery labeled with Rabbit Anti-IGF-I Polyclonal Antibody, Unconjugated(bs-0014R) at 1:200 followed by conjugation to the secondary antibody and DAB staining

[www.sunlongbiotech.com](http://www.sunlongbiotech.com)