



Rabbit Anti-osteopontin antibody

SL0019R

Product Name:	osteopontin
Chinese Name:	骨桥蛋白/分泌型磷蛋白1抗体
Alias:	BNSP; Bone sialoprotein 1; BSP I; BSPI; Early T lymphocyte activation 1; ETA 1; ETA1; MGC110940; Nephropontin; OPN; Osteopontin; osteopontin/immunoglobulin alpha 1 heavy chain constant region fusion protein; OSTP_HUMAN; secreted phosphoprotein 1 (osteopontin, bone sialoprotein I, early T-lymphocyte activation 1); Secreted phosphoprotein 1; SPP 1; SPP-1; SPP1; SPP1/CALPHA1 fusion; Urinary stone protein; Uropontin.
文献引用 PubMed :	<p>Specific References(3)SL0019R has been referenced in 3 publications.</p> <p>[IF=3.23]Liu C, Zhang Y, Wang L, Zhang X, Chen Q, Wu B (2015) A Strontium-Modified Titanium Surface Produced by a New Method and Its Biocompatibility In Vitro. PLoS ONE 10(11): e0140669.WB;Rat. PubMed:26529234</p> <p>[IF=0.00]Wei, Min Jun, et al. "Identification of OPN, TNC and E-selectin as potential recognition proteins in cerebral vasospasm after subarachnoid hemorrhage."Chinese Neurosurgical Journal 2.1 (2016): 1.WB, IHC-P;Rat. PubMed:0</p> <p>[IF=3.08]Zhan, Fu-Liang, Xin-Yang Liu, and Xing-Bo Wang. "The Role of MicroRNA-143-5p in the Differentiation of Dental Pulp Stem Cells into Odontoblasts by Targeting Runx2 via the OPG/RANKL Signaling Pathway." Journal of Cellular Biochemistry (2017).WB;Human. PubMed:28608628</p>
Organism Species:	Rabbit
Clonality:	Polyclonal

React Species:	Human,Pig,Cow,Sheep,
Applications:	WB=1:500-2000ELISA=1:500-1000IHC-P=1:400-800IHC-F=1:400-800IF=1:100-500 (Paraffin sections need antigen repair) not yet tested in other applications. optimal dilutions/concentrations should be determined by the end user.
Molecular weight:	34kDa
Cellular localization:	Secretory protein
Form:	Lyophilized or Liquid
Concentration:	1mg/ml
immunogen:	KLH conjugated synthetic peptide derived from human OPN:141-220/314
Lsotype:	IgG
Purification:	affinity purified by Protein A
Storage Buffer:	0.01M TBS(pH7.4) with 1% BSA, 0.03% Proclin300 and 50% Glycerol.
Storage:	Store at -20 °C for one year. Avoid repeated freeze/thaw cycles. The lyophilized antibody is stable at room temperature for at least one month and for greater than a year when kept at -20°C. When reconstituted in sterile pH 7.4 0.01M PBS or diluent of antibody the antibody is stable for at least two weeks at 2-4 °C.
PubMed:	PubMed
Product Detail:	<p>Osteopontin is the principal phosphorylated glycoprotein of bone and is expressed in a limited number of other tissues including dentine. Osteopontin is produced by osteoblasts under stimulation by calcitriol and binds tightly to hydroxyapatite. It is also involved in the anchoring of osteoclasts to the mineral of bone matrix via the vitronectin receptor, which has specificity for osteopontin. Osteopontin is overexpressed in a variety of cancers, including lung, breast, colorectal, stomach, ovarian, melanoma and mesothelioma.</p> <p>Function: Binds tightly to hydroxyapatite. Appears to form an integral part of the mineralized matrix. Probably important to cell-matrix interaction. Acts as a cytokine involved in enhancing production of interferon-gamma and interleukin-12 and reducing production of interleukin-10 and is essential in the pathway that leads to type I immunity (By similarity).</p> <p>Subunit: Ligand for integrin alpha-V/beta-3.</p> <p>Subcellular Location: Secreted.</p> <p>Tissue Specificity: Bone. Found in plasma.</p> <p>Similarity: Belongs to the osteopontin family.</p> <p>SWISS:</p>

P10451

Gene ID:

6696

Database links:

[Entrez Gene: 6696](#) Human

[Entrez Gene: 20750](#) Mouse

[Entrez Gene: 25353](#) Rat

[Omim: 166490](#) Human

[SwissProt: P10451](#) Human

[SwissProt: P10923](#) Mouse

[SwissProt: P08721](#) Rat

[Unigene: 313](#) Human

[Unigene: 288474](#) Mouse

[Unigene: 8871](#) Rat

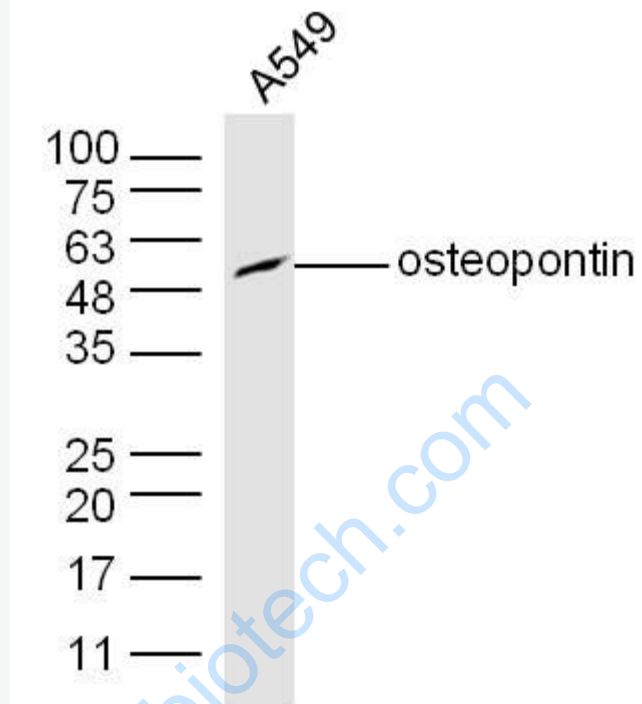
Important Note:

This product as supplied is intended for research use only, not for use in human, therapeutic or diagnostic applications.

信号传导 (Signaling Intermediates)

骨桥蛋白(osteopontin, OPN)是一种含精氨酸—甘氨酸—天冬氨酸(Arg-Gly-Asp, RGD)的分泌型糖基化磷蛋白, 已归类于Extracellular matrix(extracellular matrix, ECM)蛋白。OPN既是cell factor, 又是细胞黏附分子. 又称: 分泌性磷酸化蛋白质1
OPN最初是从骨组织分离的, 然后在epithelial cells、胃肠道的分泌物、肾、甲状腺、睾丸以及一些Tumour细胞里都陆续的发现了OPN的表达。在生殖方面, OPN在分泌期子宫内膜epithelial cells、侵袭的滋养细胞、蜕膜细胞中表达。

Picture:



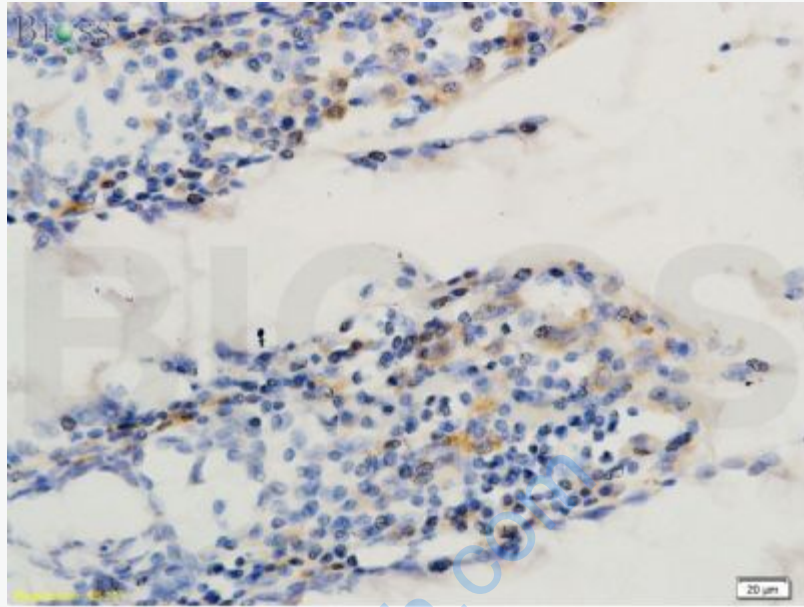
Sample: A549 Cell Lysate at 40 ug

Primary: Anti-osteopontin (SL0019R) at 1/300 dilution

Secondary: IRDye800CW Goat Anti-Rabbit IgG at 1/20000 dilution

Predicted band size: 35 kD

Observed band size: 50 kD



bs-0019R Anti-OPN(Osteopontin, human)

Formalin-fixed and paraffin-embedded human rectal carcinoma labeled with Rabbit Anti-OPN(hu) Polyclonal Antibody, Unconjugated(bs-0018R) at 1:300 followed by conjugation to the secondary antibody and DAB staining