



Rabbit Anti-CEA antibody

SL0060R

Product Name:	CEA
Chinese Name:	癌胚抗原抗体
Alias:	Carcinoembryonic antigen; Carcinoembryonic antigen related cell adhesion molecule 5; Carcinoembryonic antigen-related cell adhesion molecule 5; CD66e; CD66e; CD66e antigen; CEA; CEA; CEACAM5; CEAM5_HUMAN; DKFZp781M2392; Meconium antigen 100; OTTHUMP00000199032; OTTHUMP00000199033; OTTHUMP00000199034.
Organism Species:	Rabbit
Clonality:	Polyclonal
React Species:	Human,Rat,
Applications:	WB=1:500-2000ELISA=1:500-1000IHC-P=1:400-800IHC-F=1:400-800Flow-Cyt=0.2µg/TestIF=1:100-500 (Paraffin sections need antigen repair) not yet tested in other applications. optimal dilutions/concentrations should be determined by the end user.
Molecular weight:	71kDa
Cellular localization:	The cell membrane
Form:	Lyophilized or Liquid
Concentration:	1mg/ml
immunogen:	KLH conjugated synthetic peptide derived from human CEA:51-120/349
Lsotype:	IgG
Purification:	affinity purified by Protein A
Storage Buffer:	0.01M TBS(pH7.4) with 1% BSA, 0.03% Proclin300 and 50% Glycerol.
Storage:	Store at -20 °C for one year. Avoid repeated freeze/thaw cycles. The lyophilized antibody is stable at room temperature for at least one month and for greater than a year when kept at -20°C. When reconstituted in sterile pH 7.4 0.01M PBS or diluent of antibody the antibody is stable for at least two weeks at 2-4 °C.
PubMed:	PubMed
Product Detail:	CEA-related cell adhesion molecules (CEACAM) belong to the carcinoembryonic antigen (CEA) family. It consists of seven CEACAM (CEACAM 1, CEACAM 3-CEACAM 8) and 11 pregnancy-specific glyco-protein (PSG 1-PSG 11) members. The

CEA family proteins belong to the immunoglobulin (Ig) superfamily and are composed of one Ig variable-like (IgV) and a varying number (0-6) of Ig constant-like (IgC) domains. CEACAM molecules are membrane-bound either via a transmembrane domain or a glycosyl phosphatidyl inositol (GPI) anchor. CEACAM molecules are differentially expressed in epithelial cells or in leucocytes. Over-expression of CEA/ CEACAM 5 in tumors of epithelial origin is the basis of its wide-spread use as a tumor marker. The function of CEACAM family members varies widely: they function as cell adhesion molecules, tumor suppressors, regulators of lymphocyte and dendritic cell activation, receptors of Neisseria species and other bacteria.

Function:

Cell surface glycoprotein that plays a role in cell adhesion and in intracellular signaling. Receptor for E.coli Dr adhesins.

Subunit:

Homodimer. Binding of E.coli Dr adhesins leads to dissociation of the homodimer.

Subcellular Location:

Cell membrane; Lipid-anchor, GPI-anchor

Tissue Specificity:

Found in adenocarcinomas of endodermally derived digestive system epithelium and fetal colon.

Post-translational modifications:

Complex immunoreactive glycoprotein with a MW of 180 kDa comprising 60% carbohydrate.

Similarity:

Belongs to the immunoglobulin superfamily. CEA family. Contains 7 Ig-like (immunoglobulin-like) domains.

SWISS:

P40199

Gene ID:

4680

Database links:

[Entrez Gene: 4680](#)Human

[Entrez Gene: 100125369](#)Rat

[Omim: 163980](#)Human

[SwissProt: P40199](#)Human

[Unigene: 466814](#)Human

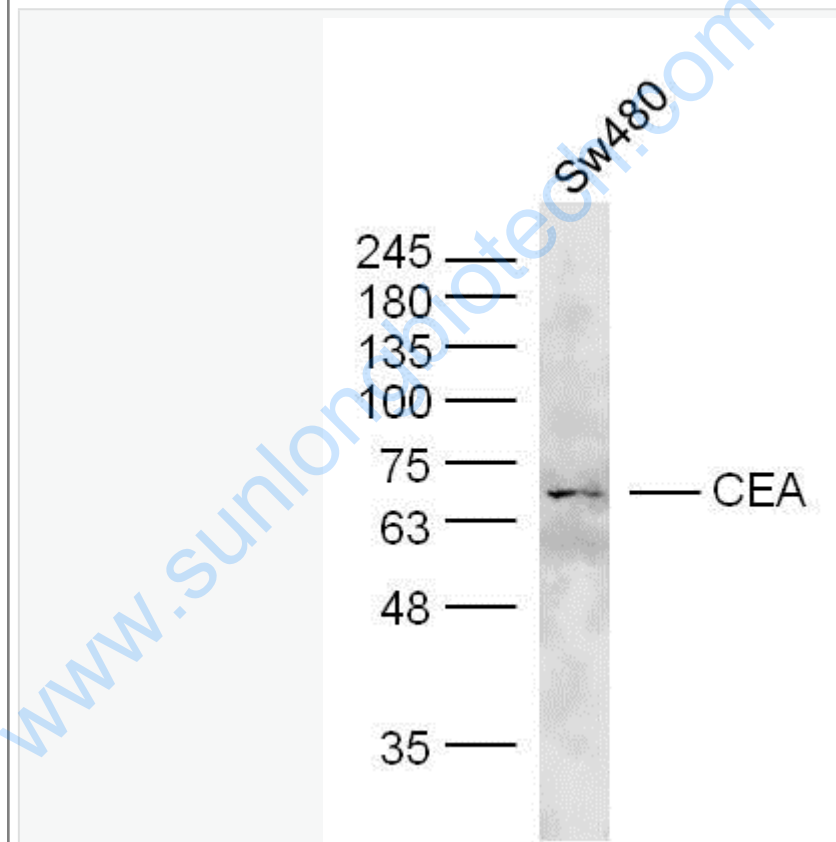
[Unigene: 122781](#)Rat

Important Note:

This product as supplied is intended for research use only, not for use in human, therapeutic or diagnostic applications.

CEA是一种胚胎性抗原, 主要存在于胎儿消化道上皮组织, 胰腺和肝癌中。CEA广泛存在于各种上皮性Tumour, 尤其是胃肠道恶性Tumour, CEA分布阳性类型与Tumour的恶性度有关。CEA与EMA一样可作为上皮性恶性Tumour的重要标记。

Picture:



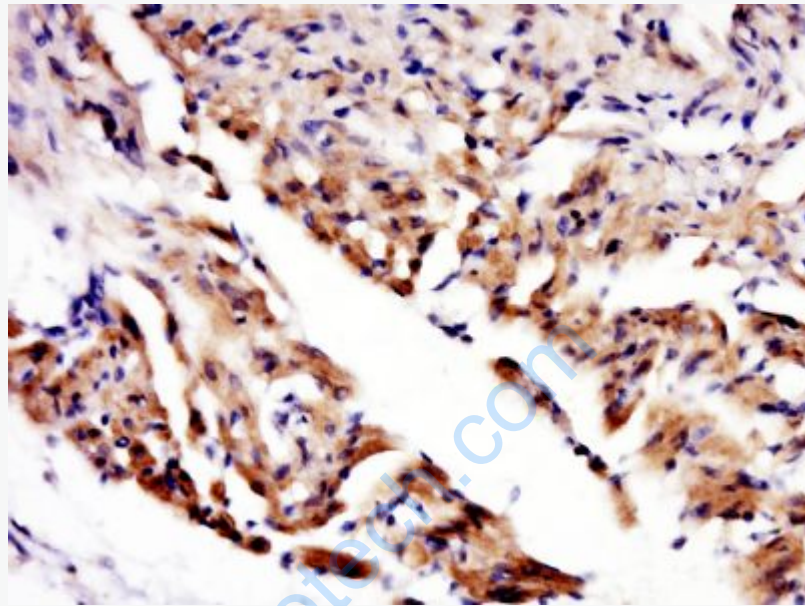
Sample: SW480 Cell Lysate at 40 ug

Primary: Anti- CEA(SL0060R) at 1/300 dilution

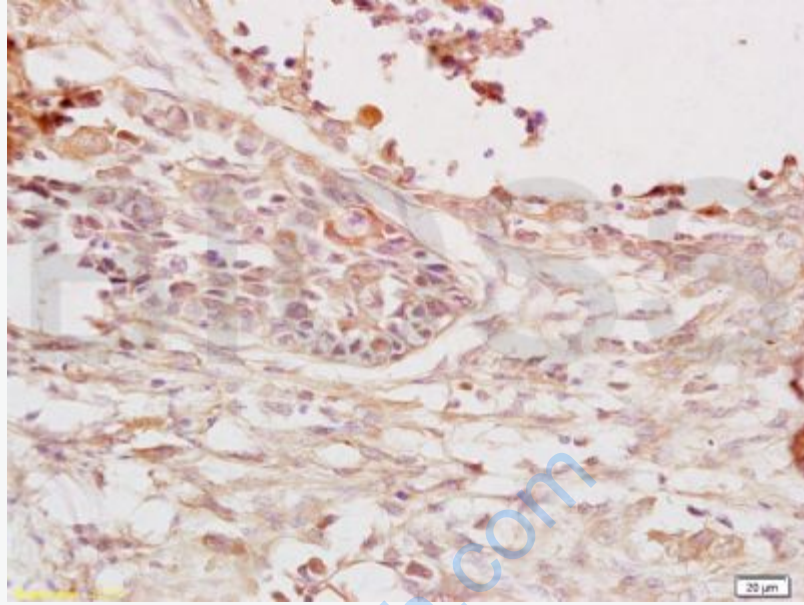
Secondary: IRDye800CW Goat Anti-Rabbit IgG at 1/10000 dilution

Predicted band size: 71 kD

Observed band size: 71 kD



Paraformaldehyde-fixed, paraffin embedded (rat heart); Antigen retrieval by boiling in sodium citrate buffer (pH6.0) for 15min; Block endogenous peroxidase by 3% hydrogen peroxide for 20 minutes; Blocking buffer (normal goat serum) at 37°C for 30min; Antibody incubation with (ADRAIA) Polyclonal Antibody, Unconjugated (SL0060R) at 1:400 overnight at 4°C, followed by a conjugated secondary (sp-0023) for 20 minutes and DAB staining.

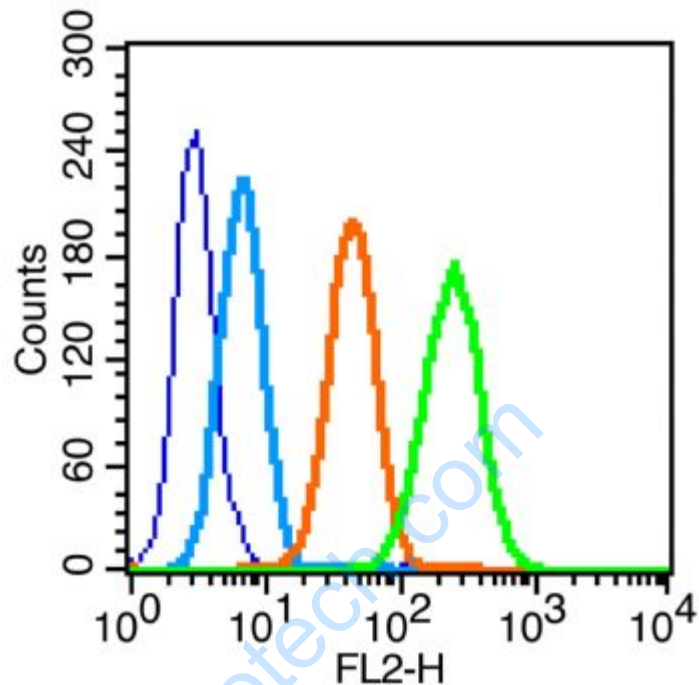


Tissue/cell: human lung carcinoma; 4% Paraformaldehyde-fixed and paraffin-embedded;

Antigen retrieval: citrate buffer (0.01M, pH 6.0), Boiling bathing for 15min; Block endogenous peroxidase by 3% Hydrogen peroxide for 30min; Blocking buffer (normal goat serum,C-0005) at 37°C for 20 min;

Incubation: Anti-CEA/CD66e/CEACAM5 Polyclonal Antibody,

Unconjugated(SL0060R) 1:200, overnight at 4°C, followed by conjugation to the secondary antibody(SP-0023) and DAB(C-0010) staining



Blank control (blue line): MCF7 (blue).

Primary Antibody (green line): Rabbit Anti-CEA antibody (SL0060R)

Dilution: 0.2 μ g /10⁶ cells;

Isotype Control Antibody (orange line): Rabbit IgG .

Secondary Antibody (white blue line): Goat anti-rabbit IgG-PE

Dilution: 1 μ g /test.

Protocol

The cells were fixed with 70% methanol overnight at 4°C . Cells stained with

Primary Antibody for 30 min at room temperature. The cells were then incubated in

1 X PBS/2%BSA/10% goat serum to block non-specific protein-protein interactions

followed by the antibody for 15 min at room temperature. The secondary antibody

	used for 40 min at room temperature. Acquisition of 20,000 events was performed.
--	--

www.sunlongbiotech.com