



Rabbit Anti-Caspase-6 subunit p18 antibody

SL0084R

Product Name:	Caspase-6 subunit p18
Chinese Name:	半胱氨酸蛋白酶蛋白-6抗体
Alias:	Caspase-6; Caspase-6 p18; cleaved Caspase-6 p18; Apoptosis Related Cysteine Protease; Apoptotic cysteine protease MCH2; Apoptotic protease MCH 2; Apoptotic protease MCH2; Casp 6; Casp6; Caspase 6 apoptosis related cysteine protease; Caspase 6 precursor; Caspase6; Human cysteine protease Mch2 isoform alpha; Mch 2; Mch2; CASP6 HUMAN; caspase-6 isoform alpha precursor.
Organism Species:	Rabbit
Clonality:	Polyclonal
React Species:	Human,Mouse,Rat,Dog,Rabbit,
Applications:	WB=1:500-2000ELISA=1:500-1000IHC-P=1:400-800IHC-F=1:400-800IF=1:100-500 (Paraffin sections need antigen repair) not yet tested in other applications. optimal dilutions/concentrations should be determined by the end user.
Molecular weight:	18/33kDa
Cellular localization:	cytoplasmic
Form:	Lyophilized or Liquid
Concentration:	1mg/ml
immunogen:	KLH conjugated synthetic peptide derived from human Caspase-6 subunit p18:27-130/293
Lsotype:	IgG
Purification:	affinity purified by Protein A
Storage Buffer:	0.01M TBS(pH7.4) with 1% BSA, 0.03% Proclin300 and 50% Glycerol.
Storage:	Store at -20 °C for one year. Avoid repeated freeze/thaw cycles. The lyophilized antibody is stable at room temperature for at least one month and for greater than a year when kept at -20°C. When reconstituted in sterile pH 7.4 0.01M PBS or diluent of antibody the antibody is stable for at least two weeks at 2-4 °C.
PubMed:	PubMed
Product Detail:	This gene encodes a protein which is a member of the cysteine-aspartic acid protease (caspase) family. Sequential activation of caspases plays a central role in the execution-

phase of cell apoptosis. Caspases exist as inactive proenzymes which undergo proteolytic processing at conserved aspartic residues to produce two subunits, large and small, that dimerize to form the active enzyme. This protein is processed by caspases 7, 8 and 10, and is thought to function as a downstream enzyme in the caspase activation cascade. Alternative splicing of this gene results in two transcript variants that encode different isoforms. [provided by RefSeq, Jul 2008]

Function:

Involved in the activation cascade of caspases responsible for apoptosis execution. Cleaves poly(ADP-ribose) polymerase in vitro, as well as lamins. Overexpression promotes programmed cell death.

Subunit:

Heterotetramer that consists of two anti-parallel arranged heterodimers, each one formed by a 18 kDa (p18) and a 11 kDa (p11) subunit. Interacts with BIRC6/bruce.

Subcellular Location:

Cytoplasm.

Post-translational modifications:

Cleavages by caspase-3, caspase-8 or -10 generate the two active subunits.

Similarity:

Belongs to the peptidase C14A family.

SWISS:

P55212

Gene ID:

839

Database links:

[Entrez Gene: 839](#)Human

[Entrez Gene: 12368](#)Mouse

[Entrez Gene: 83584](#)Rat

[Oimim: 601532](#)Human

[SwissProt: P55212](#)Human

[SwissProt: O08738](#)Mouse

[SwissProt: O35397](#)Rat

[Unigene: 654616](#)Human

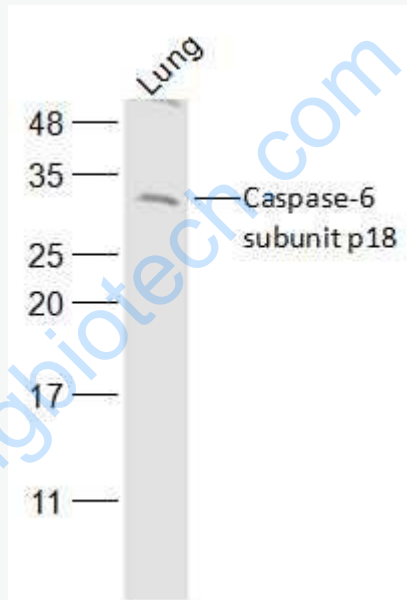
[Unigene: 281379](#)Mouse

[Unigene: 88160Rat](#)

Important Note:

This product as supplied is intended for research use only, not for use in human, therapeutic or diagnostic applications.

Caspase-6 与Caspase-3有38%的同源性, 属胱氨酸-天冬氨酸蛋白酶家族。在凋亡执行阶段起中心作用, 可被Caspase-7、-8、-10剪切。它是唯一一个可以剪切核纤层蛋白的Caspase。



Picture:

Sample:

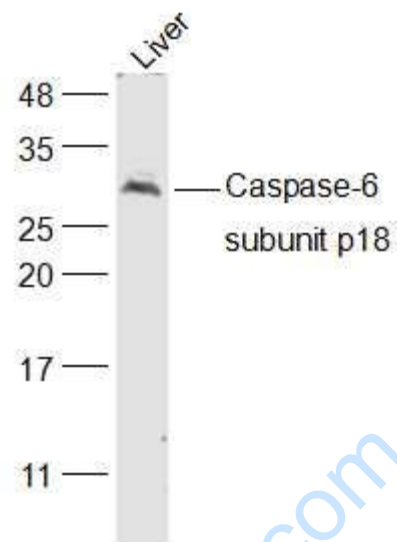
Lung (Mouse) Lysate at 40 ug

Primary: Anti-Caspase-6 subunit p18 (SL0084R) at 1/500 dilution

Secondary: IRDye800CW Goat Anti-Rabbit IgG at 1/20000 dilution

Predicted band size: 18/33 kD

Observed band size: 33 kD



Sample:

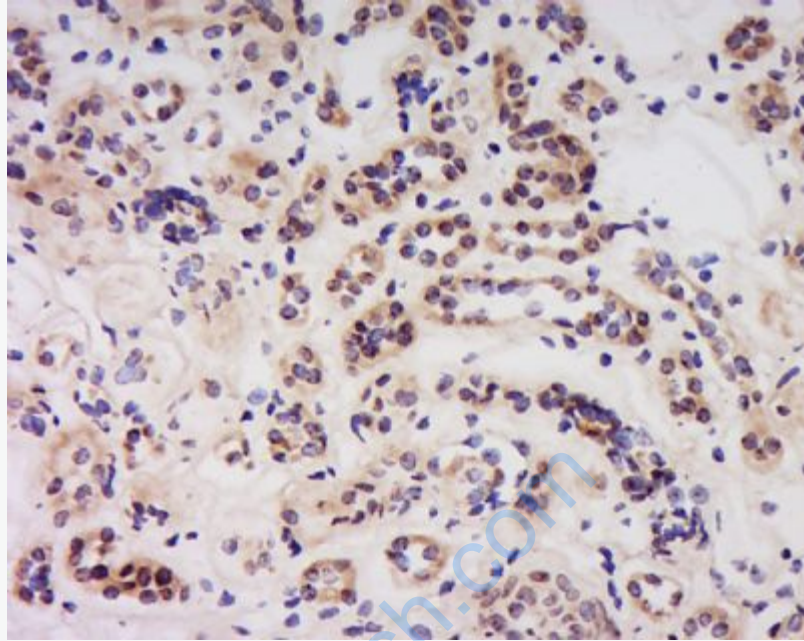
Liver (Mouse) Lysate at 40 ug

Primary: Anti-Caspase-6 subunit p18 (SL0084R) at 1/500 dilution

Secondary: IRDye800CW Goat Anti-Rabbit IgG at 1/20000 dilution

Predicted band size: 18/33 kD

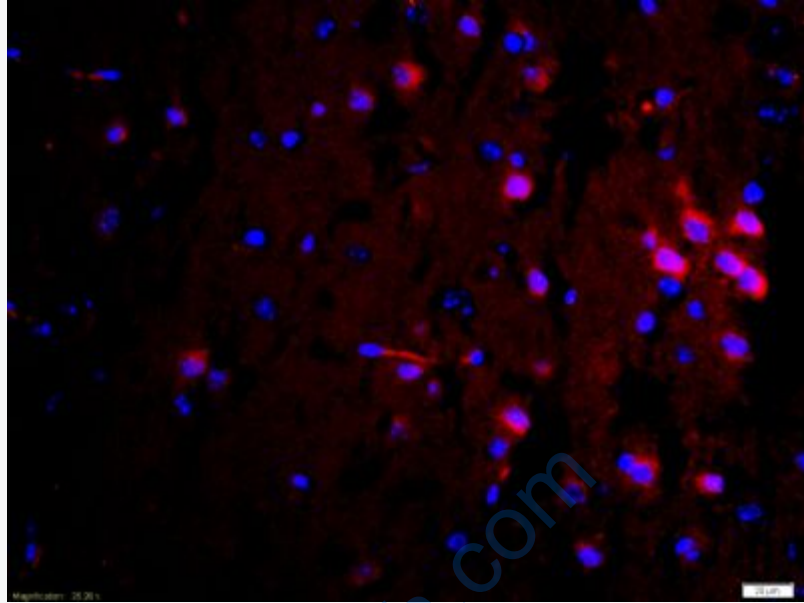
Observed band size: 33 kD



Tissue/cell: Human kidney tissue; 4% Paraformaldehyde-fixed and paraffin-embedded;

Antigen retrieval: citrate buffer (0.01M, pH 6.0), Boiling bathing for 15min; Block endogenous peroxidase by 3% Hydrogen peroxide for 30min; Blocking buffer (normal goat serum,C-0005) at 37°C for 20 min;

Incubation: Anti- Caspase-6 Polyclonal Antibody, Unconjugated(SL0084R) 1:200, overnight at 4°C, followed by conjugation to the secondary antibody(SP-0023) and DAB(C-0010) staining



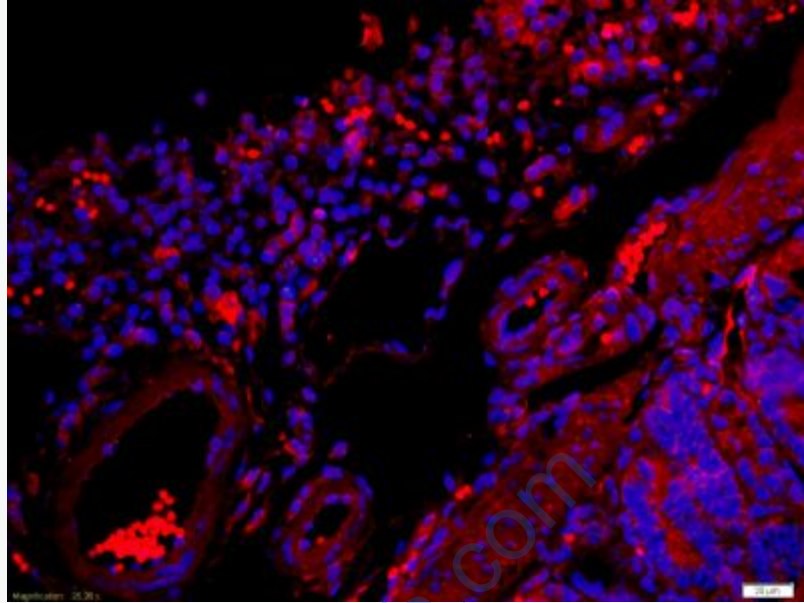
Tissue/cell: mouse brain tissue;4% Paraformaldehyde-fixed and paraffin-embedded;

Antigen retrieval: citrate buffer (0.01M, pH 6.0), Boiling bathing for 15min;

Blocking buffer (normal goat serum,C-0005) at 37°C for 20 min;

Incubation: Anti-Caspase-6 Polyclonal Antibody, Unconjugated(SL0084R) 1:200, overnight at 4°C; The secondary antibody was Goat Anti-Rabbit IgG, Cy3 conjugated(SL0084R)used at 1:200 dilution for 40 minutes at 37°C.

DAPI(5ug/ml,blue,C-0033) was used to stain the cell nuclei



Tissue/cell: mouse intestine tissue;4% Paraformaldehyde-fixed and paraffin-embedded;

Antigen retrieval: citrate buffer (0.01M, pH 6.0), Boiling bathing for 15min;

Blocking buffer (normal goat serum,C-0005) at 37°C for 20 min;

Incubation: Anti-Caspase-6 Polyclonal Antibody, Unconjugated(SL0084R) 1:200, overnight at 4°C; The secondary antibody was Goat Anti-Rabbit IgG, Cy3 conjugated(SL0084R)used at 1:200 dilution for 40 minutes at 37°C.

DAPI(5ug/ml,blue,C-0033) was used to stain the cell nuclei