



## Rabbit Anti-Secretin receptor antibody

SL0089R

<b>Product Name:</b>	Secretin receptor
<b>Chinese Name:</b>	分泌素受体抗体
<b>Alias:</b>	6530402O03Rik, MGC102218, MGC93381, SCTR, SR; Secretin receptor; SCT-R; SCTR HUMAN.
<b>Organism Species:</b>	Rabbit
<b>Clonality:</b>	Polyclonal
<b>React Species:</b>	Human,Mouse,Rat,Dog,Cow,Rabbit,Sheep,
<b>Applications:</b>	WB=1:500-2000ELISA=1:500-1000IHC-P=1:400-800IHC-F=1:400-800IF=1:100-500 (Paraffin sections need antigen repair) not yet tested in other applications. optimal dilutions/concentrations should be determined by the end user.
<b>Molecular weight:</b>	46kDa
<b>Cellular localization:</b>	The cell membrane
<b>Form:</b>	Lyophilized or Liquid
<b>Concentration:</b>	1mg/ml
<b>immunogen:</b>	KLH conjugated synthetic peptide derived from the middle of human Secretin receptor:188-280/440<Extracellular>
<b>Lsotype:</b>	IgG
<b>Purification:</b>	affinity purified by Protein A
<b>Storage Buffer:</b>	0.01M TBS(pH7.4) with 1% BSA, 0.03% Proclin300 and 50% Glycerol.
<b>Storage:</b>	Store at -20 °C for one year. Avoid repeated freeze/thaw cycles. The lyophilized antibody is stable at room temperature for at least one month and for greater than a year when kept at -20°C. When reconstituted in sterile pH 7.4 0.01M PBS or diluent of antibody the antibody is stable for at least two weeks at 2-4 °C.
<b>PubMed:</b>	<a href="#">PubMed</a>
<b>Product Detail:</b>	The receptor for secretin is a class 2 (or class B) G protein coupled receptor that signals through Gs to stimulate cAMP production. Along with its traditional role in the pancreas, studies in secretin-deficient mice have shown miscommunication between the CA3 Schaffer collateral and CA1 pyramidal neurons, causing a deficiency in synaptic transmission. This miscommunication of CA1 dendrites is found in Autism, Rett

Syndrome, and most forms of mental retardation, suggesting secretin could be a potential target for treatment of these disorders.

**Function:**

This is a receptor for secretin. The activity of this receptor is mediated by G proteins which activate adenylyl cyclase.

**Subcellular Location:**

Cell membrane; Multi-pass membrane protein.

**Similarity:**

Belongs to the G-protein coupled receptor 2 family.

**SWISS:**

P47872

**Gene ID:**

6344

**Database links:**

[Entrez Gene: 6344](#)Human

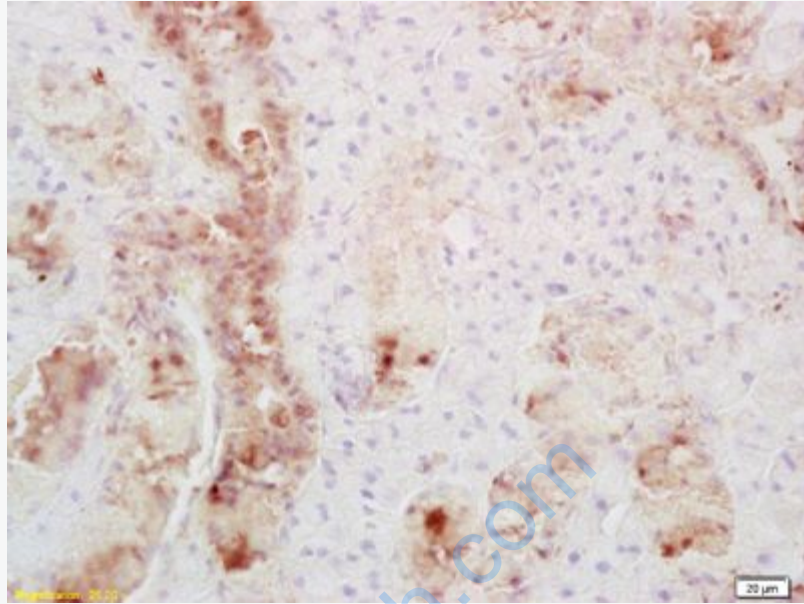
[Omid: 182098](#)Human

[SwissProt: P47872](#)Human

[Unigene: 42091](#)Human

**Important Note:**

This product as supplied is intended for research use only, not for use in human, therapeutic or diagnostic applications.



**Picture:**

Tissue/cell: mouse thyroid tissue; 4% Paraformaldehyde-fixed and paraffin-embedded;

Antigen retrieval: citrate buffer ( 0.01M, pH 6.0 ), Boiling bathing for 15min; Block endogenous peroxidase by 3% Hydrogen peroxide for 30min; Blocking buffer (normal goat serum,C-0005) at 37°C for 20 min;

Incubation: Anti-Secretin receptor Polyclonal Antibody, Unconjugated(SL0089R) 1:200, overnight at 4°C, followed by conjugation to the secondary antibody(SP-0023) and DAB(C-0010) staining