



## Rabbit Anti-CA125 antibody

SL0091R

<b>Product Name:</b>	CA125
<b>Chinese Name:</b>	卵巢癌抗原抗体
<b>Alias:</b>	CA 125; CA125; CA-125; CA125 ovarian cancer antigen; Cancer antigen 125; FLJ14303; MUC16_HUMAN; MUC 16; MUC16; Mucin 16; MUC-16; Mucin 16 cell surface associated; Mucin16; Ovarian cancer related tumor marker CA125; Ovarian carcinoma antigen CA125; Ovarian cancer-related tumor marker CA125.
<b>文献引用</b> <b>PubMed</b> :	<p><b>Specific References(3)</b> SL0091R has been referenced in 3 publications.</p> <p><b>[IF=3.50]</b>Xie, Chao, Chaoqing Dong, and Jicun Ren. "Study on homogeneous competitive immune reaction by fluorescence correlation spectroscopy: Using synthetic peptide as antigen." <i>Talanta</i> 79.3 (2009): 971-974. <a href="#">PubMed:19576474</a></p> <p><b>[IF=5.83]</b>Zong, Chen, et al. "Chemiluminescence imaging immunoassay of multiple tumor markers for cancer screening." <i>Analytical Chemistry</i> 84.5 (2012): 2410-2415.<b>other;Human.</b> <a href="#">PubMed:22320247</a></p> <p><b>[IF=7.48]</b>Zong, Chen, et al. "Multilayer hemin/G-quadruplex wrapped gold nanoparticles as tag for ultrasensitive multiplex immunoassay by chemiluminescence imaging." <i>Biosensors and Bioelectronics</i> 43 (2013): 372-378.<b>ELISA;</b> <a href="#">PubMed:23356995</a></p>
<b>Organism Species:</b>	Rabbit
<b>Clonality:</b>	Polyclonal
<b>React Species:</b>	Human,
<b>Applications:</b>	WB=1:500-2000ELISA=1:500-1000IHC-P=1:400-800IHC-F=1:400-800IF=1:100-500 (Paraffin sections need antigen repair)

	not yet tested in other applications. optimal dilutions/concentrations should be determined by the end user.
<b>Molecular weight:</b>	200kDa
<b>Cellular localization:</b>	The cell membrane Secretory protein
<b>Form:</b>	Lyophilized or Liquid
<b>Concentration:</b>	1mg/ml
<b>immunogen:</b>	KLH conjugated synthetic peptide derived from human CA125:250-350/2008
<b>Lsotype:</b>	IgG
<b>Purification:</b>	affinity purified by Protein A
<b>Storage Buffer:</b>	0.01M TBS(pH7.4) with 1% BSA, 0.03% Proclin300 and 50% Glycerol.
<b>Storage:</b>	Store at -20 °C for one year. Avoid repeated freeze/thaw cycles. The lyophilized antibody is stable at room temperature for at least one month and for greater than a year when kept at -20°C. When reconstituted in sterile pH 7.4 0.01M PBS or diluent of antibody the antibody is stable for at least two weeks at 2-4 °C.
<b>PubMed:</b>	<a href="#">PubMed</a>
<b>Product Detail:</b>	<p>MUC16 (CA125) is a serum marker that is used routinely in gynecologic practice to monitor patients with ovarian cancer. It is a mullerian duct differentiation antigen that is overexpressed in epithelial ovarian cancer cells and secreted into the blood, although its expression is not entirely confined to ovarian cancer. Most biochemical studies have concluded that MUC16 is a high molecular mass glycoprotein, although estimates of its size range from 200 to 2000 kDa with smaller “subunits” being described by some investigators.</p> <p><b>Function:</b> Thought to provide a protective, lubricating barrier against particles and infectious agents at mucosal surfaces.</p> <p><b>Subunit:</b> Binds to MSLN. Binding to MSLN mediates heterotypic cell adhesion. This may contribute to the metastasis of ovarian cancer to the peritoneum by initiating cell attachment to the mesothelial epithelium via binding to MSLN.</p> <p><b>Subcellular Location:</b> Cell membrane; Single-pass type I membrane protein. Secreted, extracellular space. Note=May be liberated into the extracellular space following the phosphorylation of the intracellular C-terminus which induces the proteolytic cleavage and liberation of the extracellular domain.</p> <p><b>Tissue Specificity:</b> Expressed in corneal and conjunctival epithelia (at protein level). Overexpressed in ovarian carcinomas and ovarian low malignant potential (LMP) tumors as compared to the expression in normal ovarian tissue and ovarian adenomas.</p> <p><b>Post-translational modifications:</b> Heavily O-glycosylated; expresses both type 1 and type 2 core glycans. Heavily N-glycosylated; expresses primarily high mannose and complex bisecting type</p>

N-linked glycans.

May be phosphorylated. Phosphorylation of the intracellular C-terminal domain may induce proteolytic cleavage and the liberation of the extracellular domain into the extracellular space.

May contain numerous disulfide bridges. Association of several molecules of the secreted form may occur through interchain disulfide bridges providing an extraordinarily large gel-like matrix in the extracellular space or in the lumen of secretory ducts.

**Similarity:**

Contains 2 ANK repeats.

Contains 56 SEA domains.

**SWISS:**

Q8WXI7

**Gene ID:**

94025

**Database links:**

[Entrez Gene: 94025](#)Human

[SwissProt: Q8WXI7](#)Human

[Unigene: 432676](#)Human

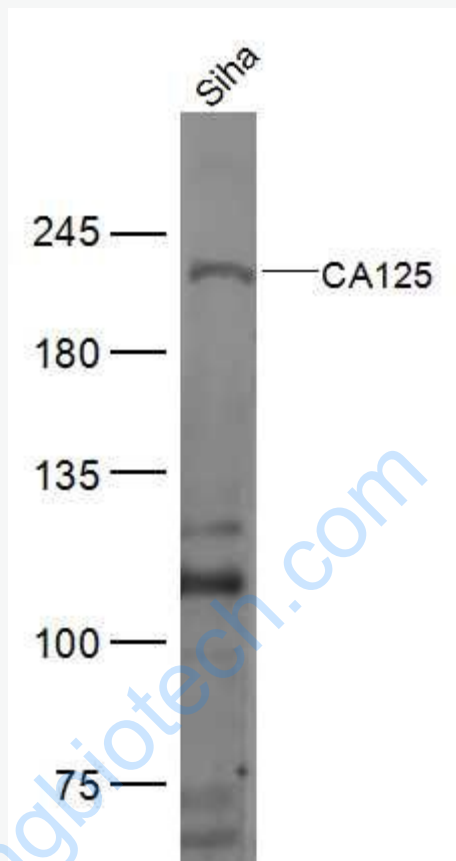
**Important Note:**

This product as supplied is intended for research use only, not for use in human, therapeutic or diagnostic applications.

CA125是与卵巢癌细胞相关的膜表面glycoprotein。在正常情况下卵巢细胞中无CA125抗原，但在经期和孕期妇女的卵巢中发现存在由此种抗原。

该蛋白是上皮性卵巢癌尤其是浆液性腺癌的主要标记，也可用于其他恶性Tumour的研究，如：乳腺癌、胰腺癌、肝癌和消化系统的Tumour等。

Picture:



Sample:

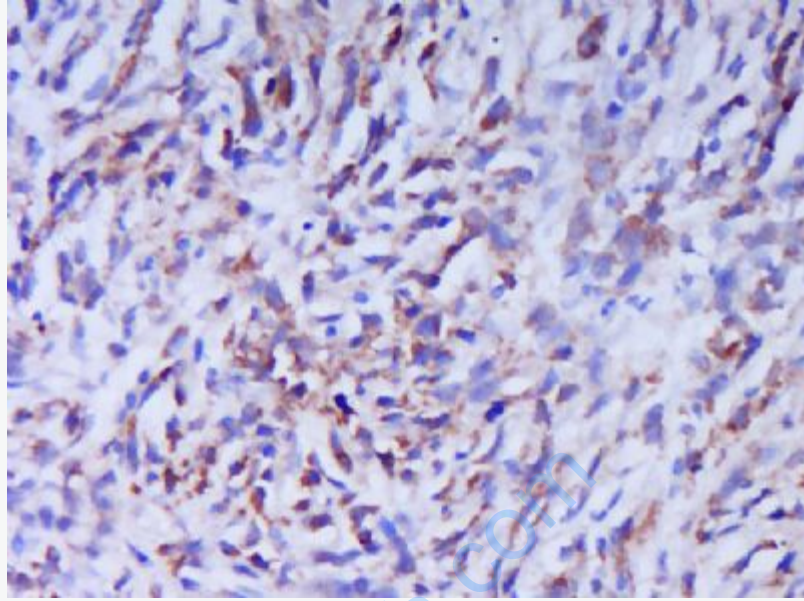
Siha(Human) Cell Lysate at 40 ug

Primary: Anti-CA125 (SL0091R) at 1/300 dilution

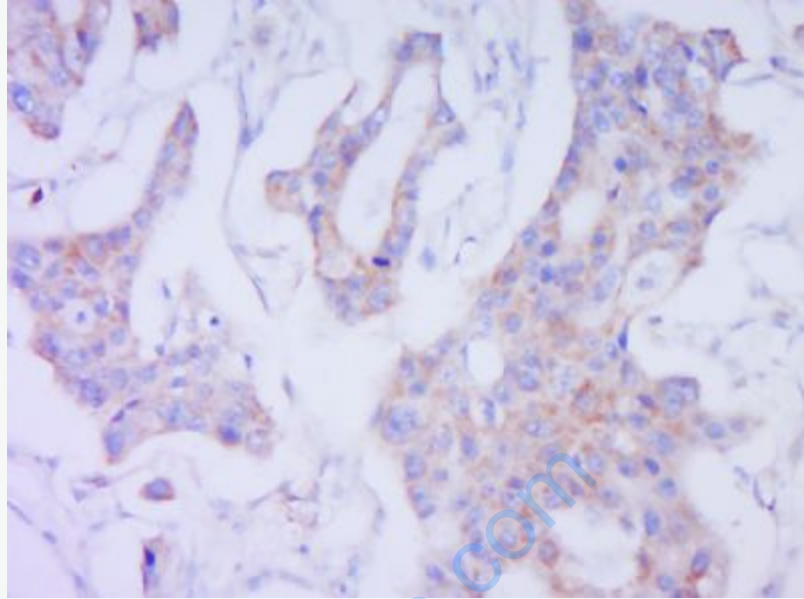
Secondary: IRDye800CW Goat Anti-Rabbit IgG at 1/20000 dilution

Predicted band size: 200 kD

Observed band size: 230 kD



Paraformaldehyde-fixed, paraffin embedded (Human stomach cancer); Antigen retrieval by boiling in sodium citrate buffer (pH6.0) for 15min; Block endogenous peroxidase by 3% hydrogen peroxide for 20 minutes; Blocking buffer (normal goat serum) at 37°C for 30min; Antibody incubation with (CA125) Polyclonal Antibody, Unconjugated (SL0091R) at 1:400 overnight at 4°C, followed by operating according to SP Kit(Rabbit) (sp-0023) instructions and DAB staining.



Paraformaldehyde-fixed, paraffin embedded (Human cervical cancer); Antigen retrieval by boiling in sodium citrate buffer (pH6.0) for 15min; Block endogenous peroxidase by 3% hydrogen peroxide for 20 minutes; Blocking buffer (normal goat serum) at 37°C for 30min; Antibody incubation with (CA125) Polyclonal Antibody, Unconjugated (SL0091R) at 1:400 overnight at 4°C, followed by operating according to SP Kit(Rabbit) (sp-0023) instructions and DAB staining.