



## Rabbit Anti-Estrogen receptor beta antibody

SL0116R

<b>Product Name:</b>	Estrogen receptor beta
<b>Chinese Name:</b>	雌激素受体β 抗体
<b>Alias:</b>	Estrogen receptor-beta; Estrogen receptor beta; ER BETA; ER-BETA; ER-beta; Erb; ESR 2; ESR 2; ESR B; ESR-B; ESR BETA; ESR-BETA; ESR2; ESR2; ESR2_HUMAN; ESRB; ESTRB; estrogen nuclear receptor beta variant a; estrogen nuclear receptor beta variant b; estrogen receptor 2 (ER beta); Estrogen Receptor 2; Estrogen Receptor-2; estrogen receptor beta 4; NR3A2; Nuclear receptor subfamily 3 group A member 2.
<b>文献引用</b> <b>PubMed</b> :	<p><b>Specific References(2)</b> SL0116R has been referenced in 2 publications.</p> <p><b>[IF=1.91]</b>Fang, Ming, Xin-Chi Wu, and Wenlong Huang. "Raloxifene Upregulated Mesangial Cell MMP-2 Activity via ER-?? Through Transcriptional Regulation."Cell Biochemistry and Biophysics (2013): 1-7..<b>WB;Mouse.</b>  <a href="#">PubMed:23471663</a></p> <p><b>[IF=4.20]</b>Wei, Qing, et al. "Estrogen suppresses hepatocellular carcinoma cells through ERβ-mediated upregulation of the NLRP3 inflammasome." Laboratory Investigation 95.7 (2015): 804-816.<b>IHC-P;Human.</b>  <a href="#">PubMed:26006022</a></p>
<b>Organism Species:</b>	Rabbit
<b>Clonality:</b>	Polyclonal
<b>React Species:</b>	Human,Mouse,Rat,Pig,Cow,
<b>Applications:</b>	WB=1:500-2000ELISA=1:500-1000IHC-P=1:400-800IHC-F=1:400-800Flow-Cyt=3μg/TestIF=1:100-500 (Paraffin sections need antigen repair) not yet tested in other applications. optimal dilutions/concentrations should be determined by the end user.
<b>Molecular weight:</b>	58kDa
<b>Cellular localization:</b>	The nucleus

<b>Form:</b>	Lyophilized or Liquid
<b>Concentration:</b>	1mg/ml
<b>immunogen:</b>	KLH conjugated synthetic peptide derived from human ER-beta:201-300/530
<b>Lsotype:</b>	IgG
<b>Purification:</b>	affinity purified by Protein A
<b>Storage Buffer:</b>	0.01M TBS(pH7.4) with 1% BSA, 0.03% Proclin300 and 50% Glycerol.
<b>Storage:</b>	Store at -20 °C for one year. Avoid repeated freeze/thaw cycles. The lyophilized antibody is stable at room temperature for at least one month and for greater than a year when kept at -20°C. When reconstituted in sterile pH 7.4 0.01M PBS or diluent of antibody the antibody is stable for at least two weeks at 2-4 °C.
<b>PubMed:</b>	<a href="#">PubMed</a>
<b>Product Detail:</b>	<p>This gene encodes a member of the family of estrogenreceptors and superfamily of nuclear receptor transcriptionfactors. The gene product contains an N-terminal DNA binding domainand C-terminal ligand binding domain and is localized to thenucleus, cytoplasm, and mitochondria. Upon binding to17beta-estradiol or related ligands, the encoded protein formshomo- or hetero-dimers that interact with specific DNA sequences toactivate transcription. Some isoforms dominantly inhibit theactivity of other estrogen receptor family members. Severalalternatively spliced transcript variants of this gene have beendescribed, but the full-length nature of some of these variants hasnot been fully characterized. [provided by RefSeq, Jul 2008].</p> <p><b>Function:</b> Nuclear hormone receptor. The steroid hormones and their receptors are involved in the regulation of eukaryotic gene expression and affect cellular proliferation and differentiation in target tissues.</p> <p><b>Subunit:</b> Interacts with SLC30A9 (By similarity). Binds DNA as a homodimer. Can form a heterodimer with ESR2. Interacts with NCOA3, NCOA5 and NCOA6 coactivators, leading to a strong increase of transcription of target genes. Interacts with NCOA7 in a ligand-inducible manner. Interacts with PHB2, PELP1 and UBE1C. Interacts with AKAP13. Interacts with CUEDC2. Interacts with KDM5A. Interacts with SMARD1. Interacts with HEXIM1 and MAP1S. Interacts with PBXIP1. Interaction with MUC1 is stimulated by 7 beta-estradiol (E2) and enhances ERS1-mediated transcription. Interacts with DNTTIP2, FAM120B and UIMC1. Interacts with isoform 4 of TXNRD1. Interacts with MLL2. Interacts with ATAD2 and this interaction is enhanced by estradiol.</p> <p><b>Subcellular Location:</b> Nucleus.</p> <p><b>Post-translational modifications:</b> Phosphorylated by cyclin A/CDK2. Phosphorylation probably enhances transcriptional activity. Glycosylated; contains N-acetylglucosamine, probably O-linked.</p> <p><b>Similarity:</b></p>

Belongs to the nuclear hormone receptor family. NR3 subfamily.  
Contains 1 nuclear receptor DNA-binding domain.

**SWISS:**  
Q92731

**Gene ID:**  
2100

**Database links:**

[Entrez Gene: 2100](#)Human

[Entrez Gene: 13983](#)Mouse

[Entrez Gene: 25149](#)Rat

[Omim: 601663](#)Human

[SwissProt: Q92731](#)Human

[SwissProt: O08537](#)Mouse

[SwissProt: Q62986](#)Rat

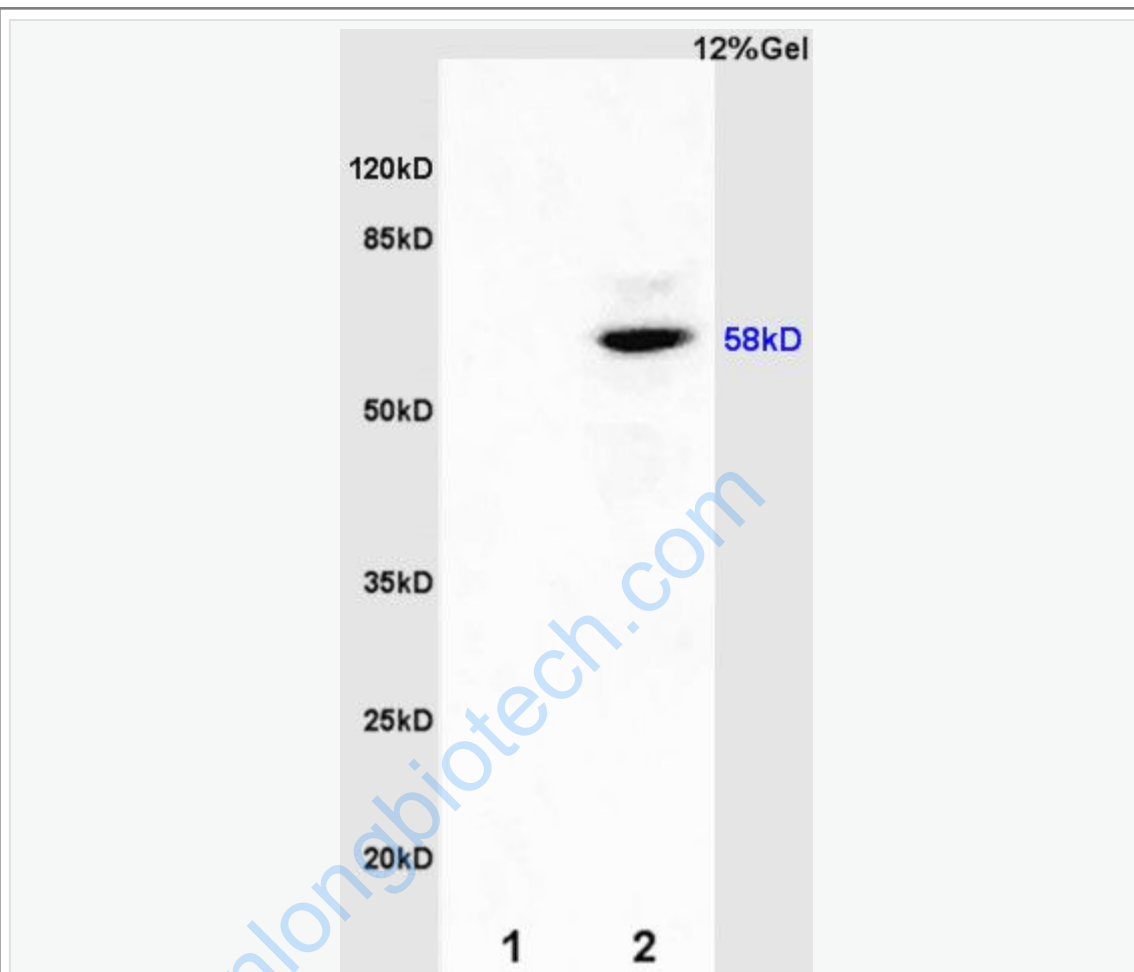
[Unigene: 660607](#)Human

**Important Note:**

This product as supplied is intended for research use only, not for use in human, therapeutic or diagnostic applications.

类固醇受体 (Steroid Receptors)

Picture:



Sample:

Kidney(Mouse) lysate at 30ug;

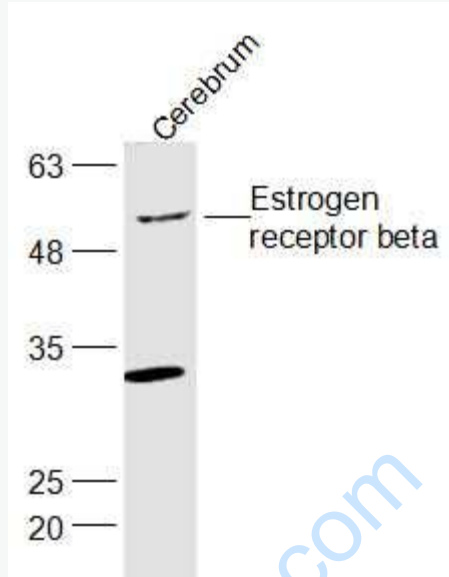
Brain(Rat) lysate at 30ug;

Primary: Anti-ER-beta (SL0116R) at 1:200;

Secondary: HRP conjugated Goat Anti-Rabbit IgG(SL0116R) at 1: 3000;

Predicted band size : 58kD

Observed band size : 58kD



Sample:

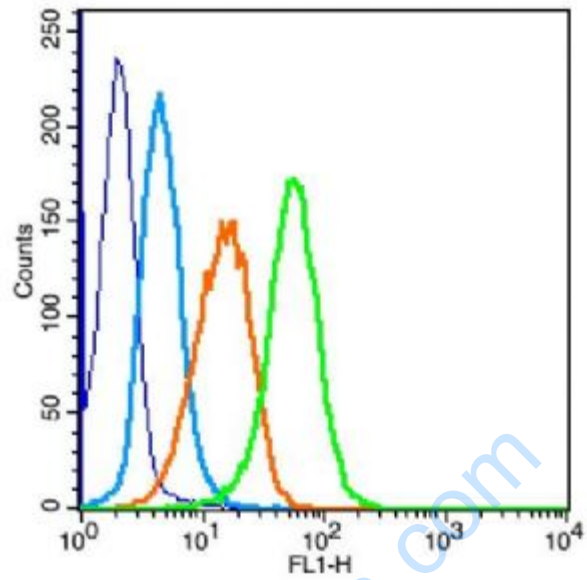
Cerebrum (Mouse) Lysate at 40 ug

Primary: Anti-Estrogen receptor beta (SL0116R) at 1/300 dilution

Secondary: IRDye800CW Goat Anti-Rabbit IgG at 1/20000 dilution

Predicted band size: 58 kD

Observed band size: 58 kD



Key	Name	Parameter	Gate
—	Hela-blank-20150717-1.028	FL1-H	G1
—	bs-0295G-FITC(Ja. L.#1F167E.030	FL1-H	G1
—	bs-0295P(B)- (FITC)-hela-6.040	FL1-H	G1
—	bs-0116R-(FITC)(Ja. #1F169A.041	FL1-H	G1

Positive control: Hela

Isotype Control Antibody: Rabbit IgG ; Secondary Antibody: Goat anti-rabbit IgG-

FITC, Dilution: 1:100 in 1 X PBS containing 0.5% BSA ; Primary Antibody

Dilution: 3 $\mu$ g in 100  $\mu$ L 1X PBS containing 0.5% BSA.