



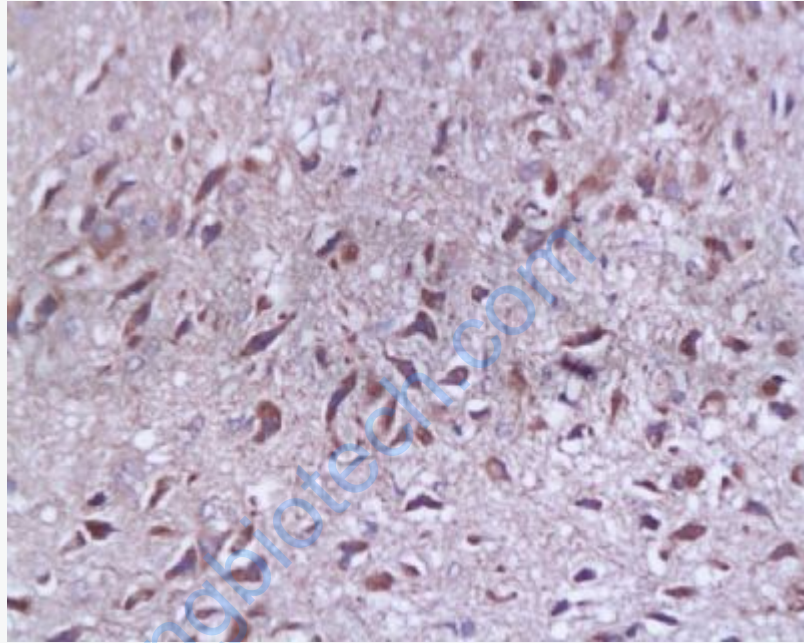
## Rabbit Anti-SYAP1 antibody

SL0121R

<b>Product Name:</b>	SYAP1
<b>Chinese Name:</b>	突触素抗体/突触相关蛋白-1
<b>Alias:</b>	Synapse associated protein-1; synapse-associated protein 1-like; 2010110017Rik, AW011796, DKFZp686K221, FLJ14495, FLJ44185, MGC94115, PRO3113, SYAP1; SYAP1_HUMAN; SAP-1.
<b>文献引用</b> <b>PubMed</b> :	<b>Specific References(1)</b>  SL0121R has been referenced in 1 publications. [IF=2.88]Gao, Yuhua, et al. "Isolation and Characterization of Chicken Dermis-Derived Mesenchymal Stem/Progenitor Cells." BioMed Research International 2013 (2013).Chicken. <a href="#">PubMed:23984389</a>
<b>Organism Species:</b>	Rabbit
<b>Clonality:</b>	Polyclonal
<b>React Species:</b>	Human,Mouse,Rat,Chicken,Dog,Pig,Cow,Horse,
<b>Applications:</b>	ELISA=1:500-1000IHC-P=1:400-800IHC-F=1:400-800Flow-Cyt=1µg/TestIF=1:100-500 (Paraffin sections need antigen repair) not yet tested in other applications. optimal dilutions/concentrations should be determined by the end user.
<b>Molecular weight:</b>	40kDa
<b>Cellular localization:</b>	cytoplasmicThe cell membrane
<b>Form:</b>	Lyophilized or Liquid
<b>Concentration:</b>	1mg/ml
<b>immunogen:</b>	KLH conjugated synthetic peptide derived from human SAP-1 :151-230/352
<b>Lsotype:</b>	IgG
<b>Purification:</b>	affinity purified by Protein A
<b>Storage Buffer:</b>	0.01M TBS(pH7.4) with 1% BSA, 0.03% Proclin300 and 50% Glycerol.
<b>Storage:</b>	Store at -20 °C for one year. Avoid repeated freeze/thaw cycles. The lyophilized antibody is stable at room temperature for at least one month and for greater than a year

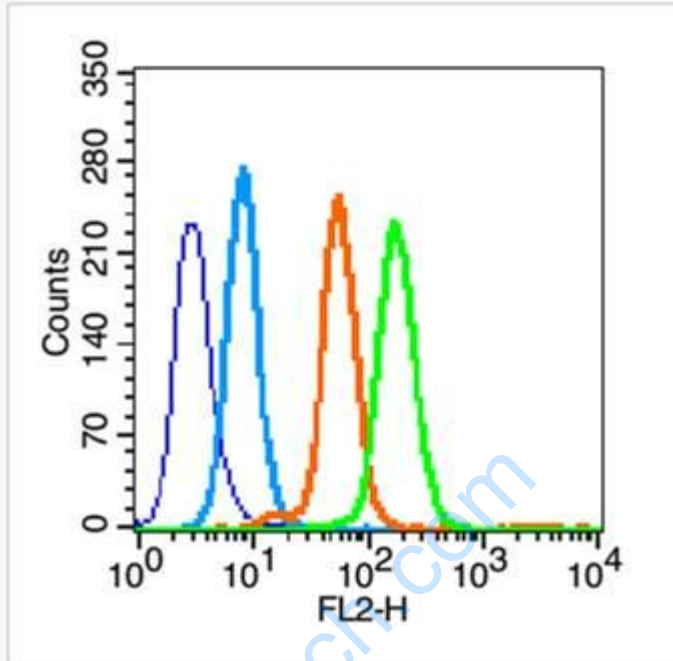
	when kept at -20°C. When reconstituted in sterile pH 7.4 0.01M PBS or diluent of antibody the antibody is stable for at least two weeks at 2-4 °C.
<b>PubMed:</b>	<a href="#">PubMed</a>
<b>Product Detail:</b>	<p>SYAP1 (synapse-associated protein 1) is a 352 amino acid protein that is ubiquitously expressed in adult tissues. SYAP1 contains one BSD domain which is a novel domain that is present in basal transcription factors, synapse-associated proteins and several hypothetical proteins. The BSD domain is characterized by three predicted alpha helices and by conserved tryptophan and phenylalanine residues, located at the C-terminus of the domain. The gene that encodes SYAP1 in humans is located on chromosome X. Chromosome X consists of about 153 million base pairs and nearly 1,000 genes. Color blindness, hemophilia, and Duchenne muscular dystrophy are well known X chromosome-linked conditions which affect males more frequently as males carry a single X chromosome.</p> <p><b>Similarity:</b> Contains 1 BSD domain.</p> <p><b>SWISS:</b> Q96A49</p> <p><b>Gene ID:</b> 94056</p> <p><b>Database links:</b></p> <p><a href="#">Entrez Gene: 509355</a> Cow</p> <p><a href="#">Entrez Gene: 94056</a> Human</p> <p><a href="#">Entrez Gene: 67043</a> Mouse</p> <p><a href="#">Entrez Gene: 302678</a> Rat</p> <p><a href="#">SwissProt: Q96A49</a> Human</p> <p><a href="#">SwissProt: Q9D5V6</a> Mouse</p> <p><a href="#">Unigene: 729197</a> Human</p> <p><a href="#">Unigene: 44207</a> Mouse</p> <p><b>Important Note:</b> This product as supplied is intended for research use only, not for use in human, therapeutic or diagnostic applications.</p>

突触素SAP-1/SYP(Synaptophysin, FRG-4)是分布于突触囊泡膜上含量丰富的glycoprotein之一, 与递质释放关系密切, 并可影响突触可塑性。突触相关蛋白-1可作为神经元和神经内分泌细胞的可靠标记物用于神经系统形态、功能和发育以及相关疾病的研究。对于SAP-1的功能及其具体作用机制, 尚待进一步研究。



Picture:

Tissue/cell: rat brain tissue; 4% Paraformaldehyde-fixed and paraffin-embedded;  
Antigen retrieval: citrate buffer ( 0.01M, pH 6.0 ), Boiling bathing for 15min; Block endogenous peroxidase by 3% Hydrogen peroxide for 30min; Blocking buffer (normal goat serum,C-0005) at 37°C for 20 min;  
Incubation: Anti-SYP p38/Synaptophysin/SAP-1 Polyclonal Antibody, Unconjugated(SL0121R) 1:200, overnight at 4°C, followed by conjugation to the secondary antibody(SP-0023) and DAB(C-0010) staining



Blank control (blue line): Hep G2 (blue).

Primary Antibody (green line): Rabbit Anti-SYAP1 antibody (SL0121R)

Dilution:  $1\mu\text{g} / 10^6$  cells;

Isotype Control Antibody (orange line): Rabbit IgG .

Secondary Antibody (white blue line): Goat anti-rabbit IgG-PE

Dilution:  $1\mu\text{g} / \text{test}$ .

#### Protocol

The cells were fixed with 70% ethanol (Overnight at  $4^{\circ}\text{C}$ ) and then permeabilized with 0.1% PBS-Tween for 20 min at room temperature. Cells stained with Primary Antibody for 30 min at room temperature. The cells were then incubated in 1 X PBS/2%BSA/10% goat serum to block non-specific protein-protein interactions followed by the antibody for 15 min at room temperature. The secondary antibody used for 40 min at room temperature. Acquisition of 20,000 events was performed.

