


## Rabbit Anti-BACE1 antibody

SL0164R

|   |  |
|---|--|
| <b>Product Name:</b>  | BACE1  |
| <b>Chinese Name:</b>  | β分泌酶抗体   |
| <b>Alias:</b>   | APP beta secretase; Asp 2; ASP2; Aspartyl protease 2; BACE 1; BACE; Beta secretase 1; Beta secretase; Beta site amyloid beta A4 precursor protein cleaving enzyme; Beta site amyloid precursor protein cleaving enzyme 1; Beta site amyloid precursor protein cleaving enzyme; Beta site APP cleaving enzyme 1; Beta site APP cleaving enzyme; FLJ90568; HSPC104; KIAA1149; Memapsin-2; Memapsin 2; Memapsin2; Membrane associated aspartic protease 2; Transmembrane aspartic proteinase Asp2; BACE1_HUMAN; Beta-secretase 1; Beta-site amyloid precursor protein cleaving enzyme 1; Beta-site APP cleaving enzyme 1; Membrane-associated aspartic protease 2.  |
| <b>文献引用</b><br> | <p><b>Specific References(4)</b> SL0164R has been referenced in 4 publications.</p> <p><b>[IF=2.20]</b>Tian, Yue, et al. "Minocycline Alleviates Sevoflurane-Induced Cognitive Impairment in Aged Rats." Cellular and Molecular Neurobiology (2015): 1-10.<b>WB;Rat.</b><br/> <a href="#">PubMed:25585814</a></p> <p><b>[IF=2.59]</b>Hong, Yan, et al. "Effects of RAGE-Specific Inhibitor FPS-ZM1 on Amyloid-β Metabolism and AGEs-Induced Inflammation and Oxidative Stress in Rat Hippocampus." Neurochemical Research: 1-8.<b>WB;Rat.</b><br/> <a href="#">PubMed:26738988</a></p> <p><b>[IF=5.58]</b>Yan, Wei, et al. "NO2 inhalation promotes Alzheimer's disease-like progression: cyclooxygenase-2-derived prostaglandin E2 modulation and monoacylglycerol lipase inhibition-targeted medication." Scientific Reports 6 (2016): 22429.<b>WB;Mouse.</b><br/> <a href="#">PubMed:26928013</a></p> <p><b>[IF=5.11]</b>Jiao, Yanan, et al. "Osthole decreases beta amyloid levels through up-</p> |

|                               |  |
|-------------------------------|--|
|                               | regulation of miR-107 in Alzheimer's disease." Neuropharmacology (2016).IHC-F;Mouse.<br><a href="#">PubMed:27143098</a>  |
| <b>Organism Species:</b>      | Rabbit   |
| <b>Clonality:</b>             | Polyclonal   |
| <b>React Species:</b>         | Human,Mouse,Rat,Chicken,Dog,Pig,Rabbit,Guinea Pig,   |
| <b>Applications:</b>          | WB=1:500-2000ELISA=1:500-1000IHC-P=1:400-800IHC-F=1:400-800Flow-Cyt=1ug/testICC=1:100-500IF=1:100-500 (Paraffin sections need antigen repair) not yet tested in other applications.<br>optimal dilutions/concentrations should be determined by the end user.  |
| <b>Molecular weight:</b>      | 51kDa  |
| <b>Cellular localization:</b> | cytoplasmicThe cell membrane   |
| <b>Form:</b>                  | Lyophilized or Liquid  |
| <b>Concentration:</b>         | 1mg/ml   |
| <b>immunogen:</b>             | KLH conjugated synthetic peptide derived from human BACE1:401-501/501  |
| <b>Lsotype:</b>               | IgG  |
| <b>Purification:</b>          | affinity purified by Protein A   |
| <b>Storage Buffer:</b>        | 0.01M TBS(pH7.4) with 1% BSA, 0.03% Proclin300 and 50% Glycerol.   |
| <b>Storage:</b>               | Store at -20 °C for one year. Avoid repeated freeze/thaw cycles. The lyophilized antibody is stable at room temperature for at least one month and for greater than a year when kept at -20°C. When reconstituted in sterile pH 7.4 0.01M PBS or diluent of antibody the antibody is stable for at least two weeks at 2-4 °C.  |
| <b>PubMed:</b>                | <a href="#">PubMed</a>   |
| <b>Product Detail:</b>        | <p>Cerebral deposition of amyloid beta peptide is an early and critical feature of Alzheimer's disease. Amyloid beta peptide is generated by proteolytic cleavage of amyloid precursor protein(APP) by two proteases, one of which is the protein encoded by this gene. The encoded protein, a member of the peptidase A1 protein family, is a type I integral membrane glycoprotein and aspartic protease that is found mainly in the Golgi. Multiple transcript variants encoding different isoforms have been described for this gene. [provided by RefSeq].</p> <p><b>Function:</b><br/>Responsible for the proteolytic processing of the amyloid precursor protein (APP). Cleaves at the N-terminus of the A-beta peptide sequence, between residues 671 and 672 of APP, leads to the generation and extracellular release of beta-cleaved soluble APP, and a corresponding cell-associated C-terminal fragment which is later released by gamma-secretase.</p> <p><b>Subunit:</b><br/>Responsible for the proteolytic processing of the amyloid precursor protein (APP). Cleaves at the N-terminus of the A-beta peptide sequence, between residues 671 and 672 of APP, leads to the generation and extracellular release of beta-cleaved soluble APP, and a corresponding cell-associated C-terminal fragment which is later released by gamma-secretase.</p> |

**Subcellular Location:**  
Membrane.

**Tissue Specificity:**

Expressed at high levels in the brain and pancreas. In the brain, expression is highest in the substantia nigra, locus coruleus and medulla oblongata.

**Post-translational modifications:**

Glycosylated.

**Similarity:**

Belongs to the peptidase A1 family.

**SWISS:**

P56817

**Gene ID:**

23621

**Database links:**

[Entrez Gene: 23621](#) Human

[Entrez Gene: 23821](#) Mouse

[Entrez Gene: 29392](#) Rat

[Omim: 604252](#) Human

[SwissProt: P56817](#) Human

[SwissProt: P56818](#) Mouse

[SwissProt: P56819](#) Rat

[Unigene: 504003](#) Human

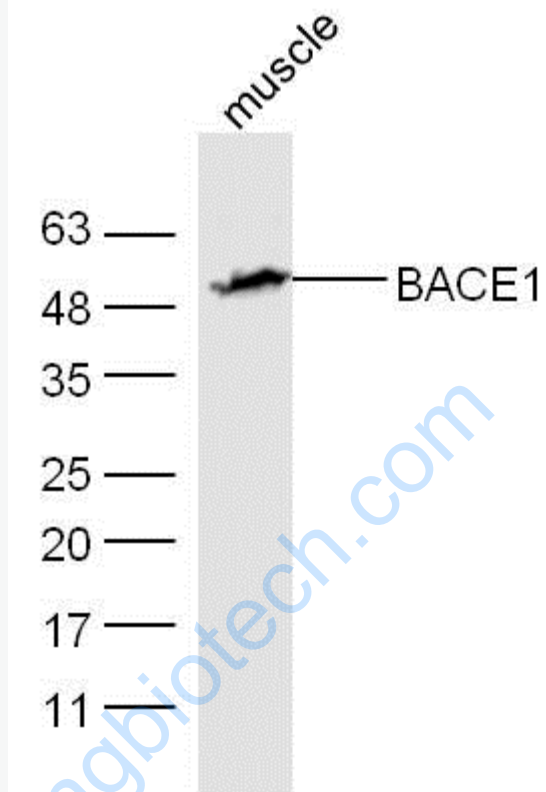
[Unigene: 24044](#) Mouse

[Unigene: 207201](#) Rat

**Important Note:**

This product as supplied is intended for research use only, not for use in human, therapeutic or diagnostic applications.

Picture:



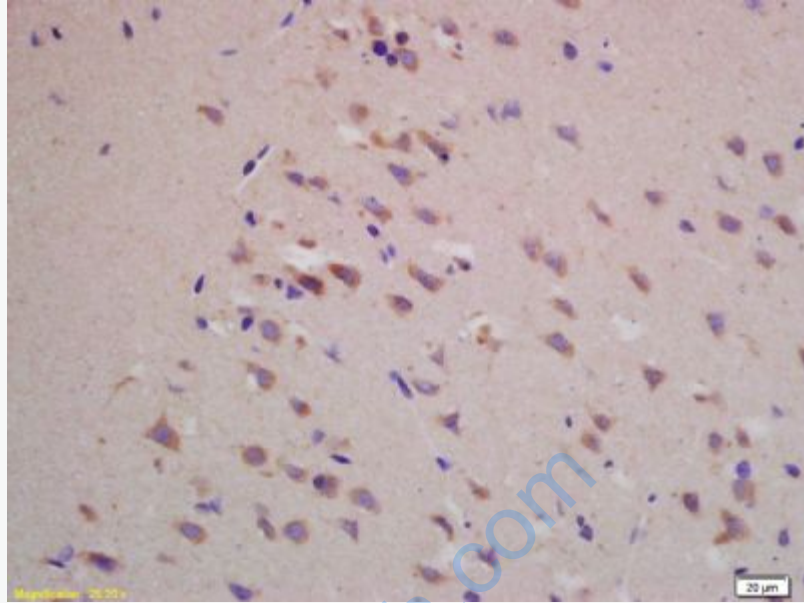
Sample: Muscle (Mouse) Lysate at 30ug

Primary: Anti- BACE1 (SL0164R) at 1/300 dilution

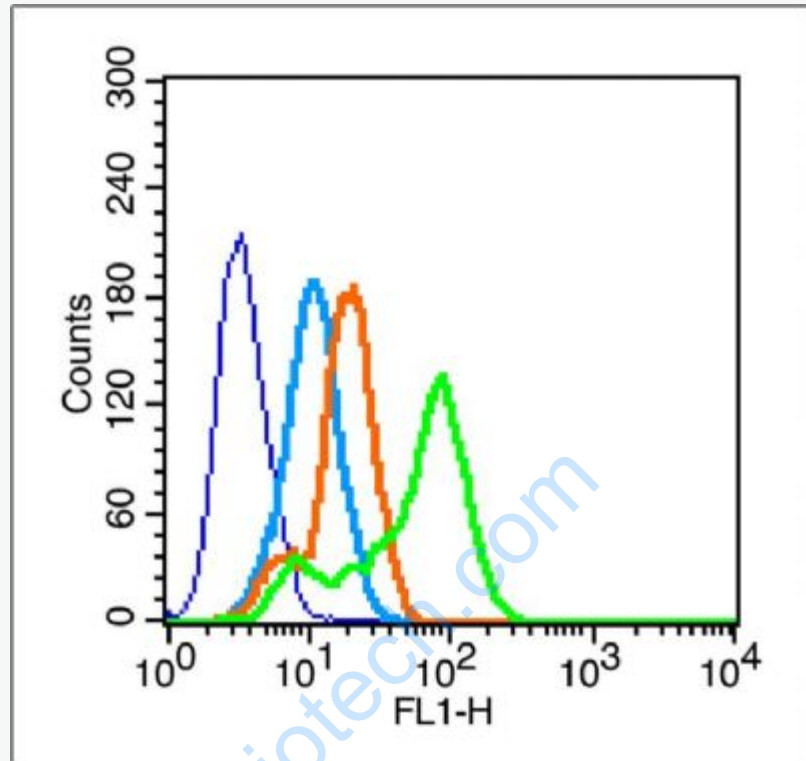
Secondary: IRDye800CW Goat Anti-Rabbit IgG at 1/10000 dilution

Predicted band size: 51 kD

Observed band size: 51 kD



Paraformaldehyde-fixed, paraffin embedded (rat brain tissue); Antigen retrieval by boiling in sodium citrate buffer (pH6.0) for 15min; Block endogenous peroxidase by 3% hydrogen peroxide for 20 minutes; Blocking buffer (normal goat serum) at 37°C for 30min; Antibody incubation with (BACE1) Polyclonal Antibody, Unconjugated (SL0164R) at 1:400 overnight at 4°C, followed by a conjugated secondary (sp-0023) for 20 minutes and DAB staining.



Blank control (blue line): MCF7(blue)(The cells were fixed with 2% paraformaldehyde for 10 min at room temperature) Primary Antibody (green line): Rabbit Anti-BACE1 antibody(SL0164R) ;Dilution: 1 $\mu$ g /10<sup>6</sup> cells;

Isotype Control Antibody (orange line): Rabbit IgG .

Secondary Antibody (white blue line): Goat anti-rabbit IgG-PE ;Dilution: 1 $\mu$ g /test.