



Rabbit Anti-PACAP-27/38 antibody

SL0190R

Product Name:	PACAP-27/38
Chinese Name:	腺苷酸环化酶激活肽-27/38抗体
Alias:	Adenylate Cyclase Activating Polypeptide 1 (Pituitary); Prepro-PACAP; PACAP; Pituitary Adenylate Cyclase Activating Polypeptide; PRP-48; PACAP27; PACAP38; ADCYAP1; PACA HUMAN;
Organism Species:	Rabbit
Clonality:	Polyclonal
React Species:	Human,Mouse,Rat,
Applications:	WB=1:500-2000ELISA=1:500-1000IHC-P=1:400-800IHC-F=1:400-800IF=1:100-500 (Paraffin sections need antigen repair) not yet tested in other applications. optimal dilutions/concentrations should be determined by the end user.
Molecular weight:	19kDa
Cellular localization:	Secretory protein
Form:	Lyophilized or Liquid
Concentration:	1mg/ml
immunogen:	KLH conjugated synthetic peptide derived from human PACAP-27/38:132-169/176
Lsotype:	IgG
Purification:	affinity purified by Protein A
Storage Buffer:	0.01M TBS(pH7.4) with 1% BSA, 0.03% Proclin300 and 50% Glycerol.
Storage:	Store at -20 °C for one year. Avoid repeated freeze/thaw cycles. The lyophilized antibody is stable at room temperature for at least one month and for greater than a year when kept at -20°C. When reconstituted in sterile pH 7.4 0.01M PBS or diluent of antibody the antibody is stable for at least two weeks at 2-4 °C.
PubMed:	PubMed
Product Detail:	This gene encodes a secreted proprotein that is further processed into multiple mature peptides. These peptides stimulate adenylate cyclase and increase cyclic adenosine monophosphate (cAMP) levels, resulting in the transcriptional activation of target genes. The products of this gene are key mediators of neuroendocrine stress responses. Alternative splicing results in multiple transcript variants. [provided by RefSeq, Feb

2013]

Function:

Binding to its receptor activates G proteins and stimulates adenylate cyclase in pituitary cells. Promotes neuron projection development through the RAPGEF2/Rap1/B-Raf/ERK pathway. In chromaffin cells, induces long-lasting increase of intracellular calcium concentrations and neuroendocrine secretion (By similarity). Involved in the control of glucose homeostasis, induces insulin secretion by pancreatic beta cells (By similarity).

Subunit:

Interacts with ADCYAP1R1 (via N-terminal extracellular domain).

Subcellular Location:

Extracellular region or secreted

Similarity:

Belongs to the glucagon family.

SWISS:

P18509

Gene ID:

116

Database links:

[Entrez Gene: 116](#)Human

[Entrez Gene: 11516](#)Mouse

[Entrez Gene: 414283](#)Pig

[Entrez Gene: 24166](#)Rat

[Omim: 102980](#)Human

[SwissProt: P18509](#)Human

[SwissProt: O70176](#)Mouse

[SwissProt: P41535](#)Pig

[SwissProt: P13589](#)Rat

[Unigene: 531719](#)Human

[Unigene: 727476](#)Human

[Unigene: 3407](#)Mouse

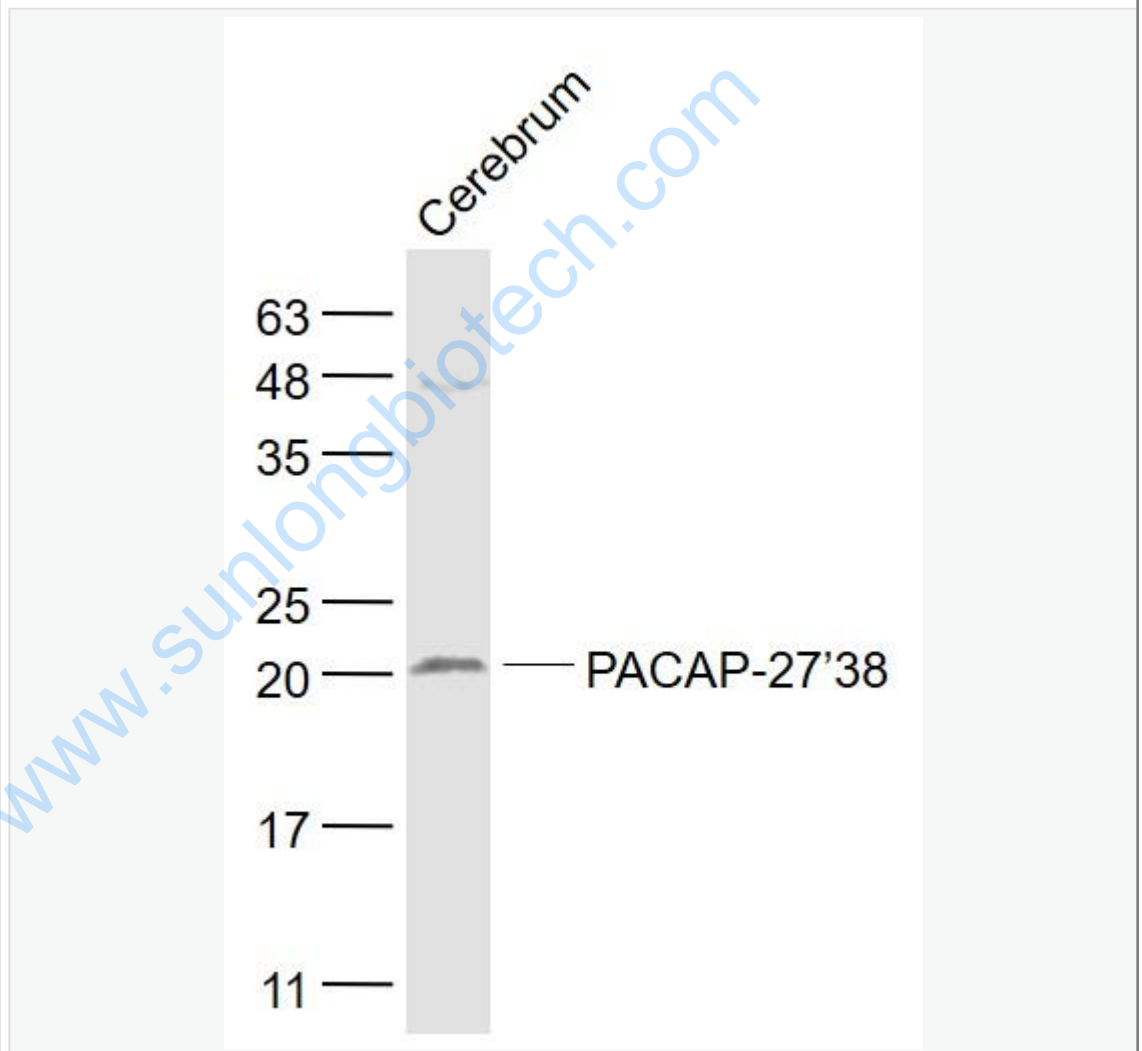
[Unigene: 37400](#)Rat

Important Note:

This product as supplied is intended for research use only, not for use in human, therapeutic or diagnostic applications.

腺苷酸环化酶激活肽是一种可激活垂体腺苷酸环化酶的多肽，有PACAP-27和PACAP-38两种形式，他们共同具有N端27个氨基酸，属于PACAP/glucagon超级家族。在中枢神经系统分布广泛，其中以下丘脑含量最高。

Picture:



Sample:

Cerebrum (Rat) Lysate at 40 ug

Primary: Anti- PACAP-27/38 (SL0190R) at 1/1000 dilution

Secondary: IRDye800CW Goat Anti-Rabbit IgG at 1/20000 dilution

Predicted band size: 19 kD

Observed band size: 20 kD

www.sunlongbiotech.com