



## Rabbit Anti-Thymosin Alpha-1 antibody

SL0226R

<b>Product Name:</b>	Thymosin Alpha-1
<b>Chinese Name:</b>	胸腺肽 $\alpha$ 1 抗体
<b>Alias:</b>	Prothymosin alpha (gene sequence 28); Prothymosin alpha; Prothymosin alpha like 1 protein; Thymalfasin; Thymosin alpha 1 acetate; Thymosin alpha 1; Thymosin alpha; TMSA; PTMA; PTMA HUMAN.
<b>文献引用</b> <b>PubMed</b> :	<b>Specific References(1)</b>  SL0226R has been referenced in 1 publications. <b>[IF=2.42]</b> Shao, Congwen, et al. "Thymosin alpha-1-transformed< i> Bifidobacterium promotes T cell proliferation and maturation in mice by oral administration." International immunopharmacology (2013). <b>WB</b> ; <a href="#">PubMed:23352493</a>
<b>Organism Species:</b>	Rabbit
<b>Clonality:</b>	Polyclonal
<b>React Species:</b>	Human,Mouse,Rat,Cow,
<b>Applications:</b>	ELISA=1:500-1000IHC-P=1:400-800IHC-F=1:400-800Flow-Cyt=2 $\mu$ g/TestIF=1:100-500 (Paraffin sections need antigen repair) not yet tested in other applications. optimal dilutions/concentrations should be determined by the end user.
<b>Molecular weight:</b>	12kDa
<b>Cellular localization:</b>	The nucleus
<b>Form:</b>	Lyophilized or Liquid
<b>Concentration:</b>	1mg/ml
<b>immunogen:</b>	KLH conjugated synthetic peptide derived from human Thymosin Alpha-1:2-29/111
<b>Lsotype:</b>	IgG
<b>Purification:</b>	affinity purified by Protein A
<b>Storage Buffer:</b>	0.01M TBS(pH7.4) with 1% BSA, 0.03% Proclin300 and 50% Glycerol.
<b>Storage:</b>	Store at -20 °C for one year. Avoid repeated freeze/thaw cycles. The lyophilized antibody is stable at room temperature for at least one month and for greater than a year

when kept at -20°C. When reconstituted in sterile pH 7.4 0.01M PBS or diluent of antibody the antibody is stable for at least two weeks at 2-4 °C.

**PubMed:**

[PubMed](#)

The thymus gland produces several hormones or hormone-like substances which are derived from a polypeptide precursor containing (in the rat) 113 amino acids and known as prothymosin alpha. A peptide containing 28 amino acid residues, named thymosin alpha 1, was originally isolated from calf thymosin fraction 5 and shown to restore various aspects of immune function in several in vitro and in vivo test systems. Thymosin alpha 1 was subsequently isolated from a similar fraction from human thymosin and reported to have the same amino acid sequence as bovine thymosin alpha 1.

**Function:**

Prothymosin alpha may mediate immune function by conferring resistance to certain opportunistic infections.

**Subcellular Location:**

Nucleus.

**Post-translational modifications:**

Covalently linked to a small RNA of about 20 nucleotides.

**Similarity:**

Belongs to the pro/parathymosin family.

**Product Detail:**

**SWISS:**

P06454

**Gene ID:**

5757

**Database links:**

[Entrez Gene: 5757](#)Human

[Omim: 188390](#)Human

[SwissProt: P06454](#)Human

[Unigene: 459927](#)Human

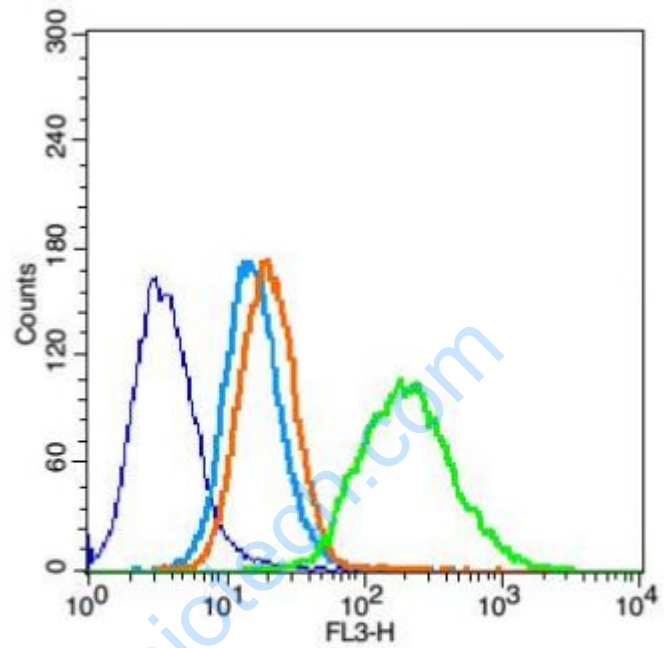
[Unigene: 708083](#)Human

**Important Note:**

This product as supplied is intended for research use only, not for use in human, therapeutic or diagnostic applications.

胸腺素 $\alpha$ -1;胸腺肽

Picture:



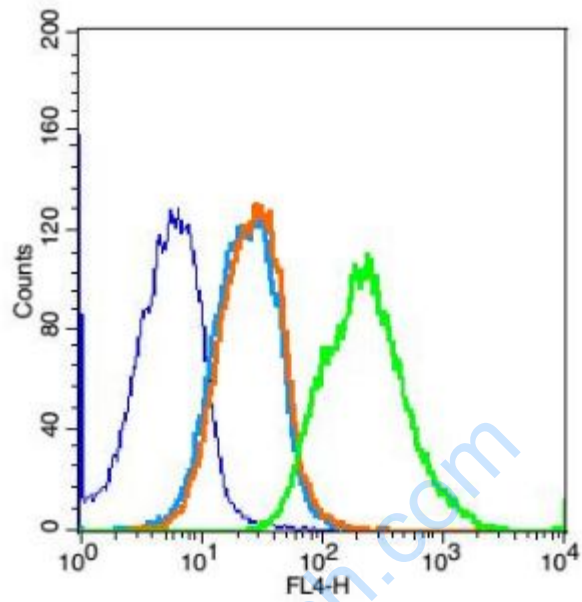
Key	Name	Parameter
—	H9C2-blank.024	FL3-H
—	bs-0295G-PE-Cy5-H9C2-2.025	FL3-H
—	bs-0295P-(PE-Cy5)-H9#1FF421.026	FL3-H
—	bs-0226R-(PE-Cy5)-H9#1FF423.027	FL3-H

Blank control: H9C2

Isotype Control Antibody: Rabbit IgG ; Secondary Antibody: Goat anti-rabbit IgG-

PE-CY5, Dilution: 1:100 in 1 X PBS containing 0.5% BSA ; Primary Antibody

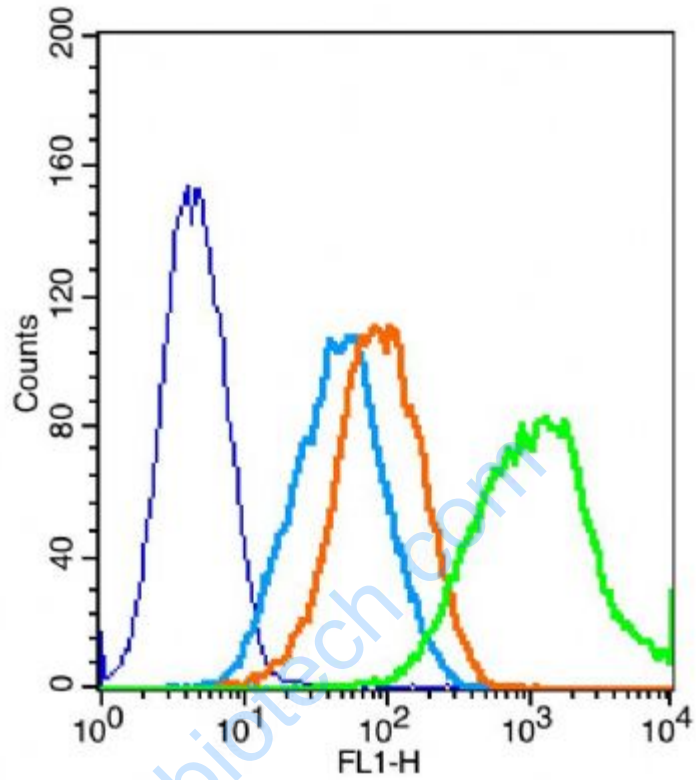
Dilution: 5 $\mu$ l in 100  $\mu$ L1X PBS containing 0.5% BSA.



Key	Name	Parameter	Gate
—	RSC96-blank.050	FL4-H	G1
—	bs-0295G-APC-RSC96-2.051	FL4-H	G1
—	bs-0295P-(APC)-RSC96-0.2-2.052	FL4-H	G1
—	bs-0226R-(APC)-RSC96-2-2.053	FL4-H	G1

Blank control: RSC96

Isotype Control Antibody: Rabbit IgG ; Secondary Antibody: Goat anti-rabbit IgG-APC, Dilution: 1:100 in 1 X PBS containing 0.5% BSA ; Primary Antibody Dilution: 2µl in 100 µL 1X PBS containing 0.5% BSA.



The blue histogram is unstained cells(293FT cells).

The Wathet Blue histogram is cells stained with secondary antibody alone.

The Orange histogram is cells stained with rabbit IgG isotype control antibody plus secondary antibody.

The green histogram is cells stained withRabbit Anti-Thymosin Alpha-1 antibody (SL0226R) plus secondary antibody. Concentration 1:50