



## Rabbit Anti-PLGF antibody

SL0234R

<b>Product Name:</b>	PLGF
<b>Chinese Name:</b>	胎盘生长因子抗体
<b>Alias:</b>	Placenta growth factor; PGF; PGFL; PIGF; Placental growth factor vascular endothelial growth factor related protein; PIGF 2; PLGF; PIGF2; PLGF_MOUSE; Vascular endothelial growth factor related protein.
<b>Organism Species:</b>	Rabbit
<b>Clonality:</b>	Polyclonal
<b>React Species:</b>	Human,Mouse,
<b>Applications:</b>	WB=1:500-2000ELISA=1:500-1000 not yet tested in other applications. optimal dilutions/concentrations should be determined by the end user.
<b>Molecular weight:</b>	16kDa
<b>Cellular localization:</b>	Secretory protein
<b>Form:</b>	Lyophilized or Liquid
<b>Concentration:</b>	1mg/ml
<b>immunogen:</b>	KLH conjugated synthetic peptide derived from mouse PLGF:131-158/158
<b>Lsotype:</b>	IgG
<b>Purification:</b>	affinity purified by Protein A
<b>Storage Buffer:</b>	0.01M TBS(pH7.4) with 1% BSA, 0.03% Proclin300 and 50% Glycerol.
<b>Storage:</b>	Store at -20 °C for one year. Avoid repeated freeze/thaw cycles. The lyophilized antibody is stable at room temperature for at least one month and for greater than a year when kept at -20°C. When reconstituted in sterile pH 7.4 0.01M PBS or diluent of antibody the antibody is stable for at least two weeks at 2-4 °C.
<b>PubMed:</b>	<a href="#">PubMed</a>
<b>Product Detail:</b>	The placental-derived growth factor (PIGF) is a dimeric glycoprotein showing a high degree of sequence similarity to the vascular endothelial growth factor. Alternative splicing of the PIGF primary transcript gives rise to two forms, named PIGF-1 and PIGF-2, which differ only in the insertion of a highly basic 21-amino acid stretch at the carboxyl end. The presence of the PIGF mRNA in thyroid, placenta, lung, and goiter has indicated the tissues where this factor functions. However, the role of PIGF in

vascular development has not yet been clearly established.

**Function:**

Growth factor active in angiogenesis and endothelial cell growth, stimulating their proliferation and migration. It binds to the receptor FLT1/VEGFR-1. Isoform PIGF-2 binds NRP1/neuropilin-1 and NRP2/neuropilin-2 in a heparin-dependent manner.

**Subunit:**

Antiparallel homodimer; disulfide-linked. Also found as heterodimer with VEGFA/VEGF (By similarity).

**Subcellular Location:**

Secreted. The three isoforms are secreted but PIGF-2 appears to remain cell attached unless released by heparin.

**Tissue Specificity:**

While the three isoforms are present in most placental tissues, PIGF-2 is specific to early (8 week) placenta and only PIGF-1 is found in the colon and mammary carcinomas.

**Similarity:**

Belongs to the PDGF/VEGF growth factor family.

**SWISS:**

P49763

**Gene ID:**

18654

**Database links:**

[Entrez Gene: 5228](#)Human

[Entrez Gene: 18654](#)Mouse

[Omim: 601121](#)Human

[SwissProt: P49763](#)Human

[SwissProt: P49764](#)Mouse

[Unigene: 252820](#)Human

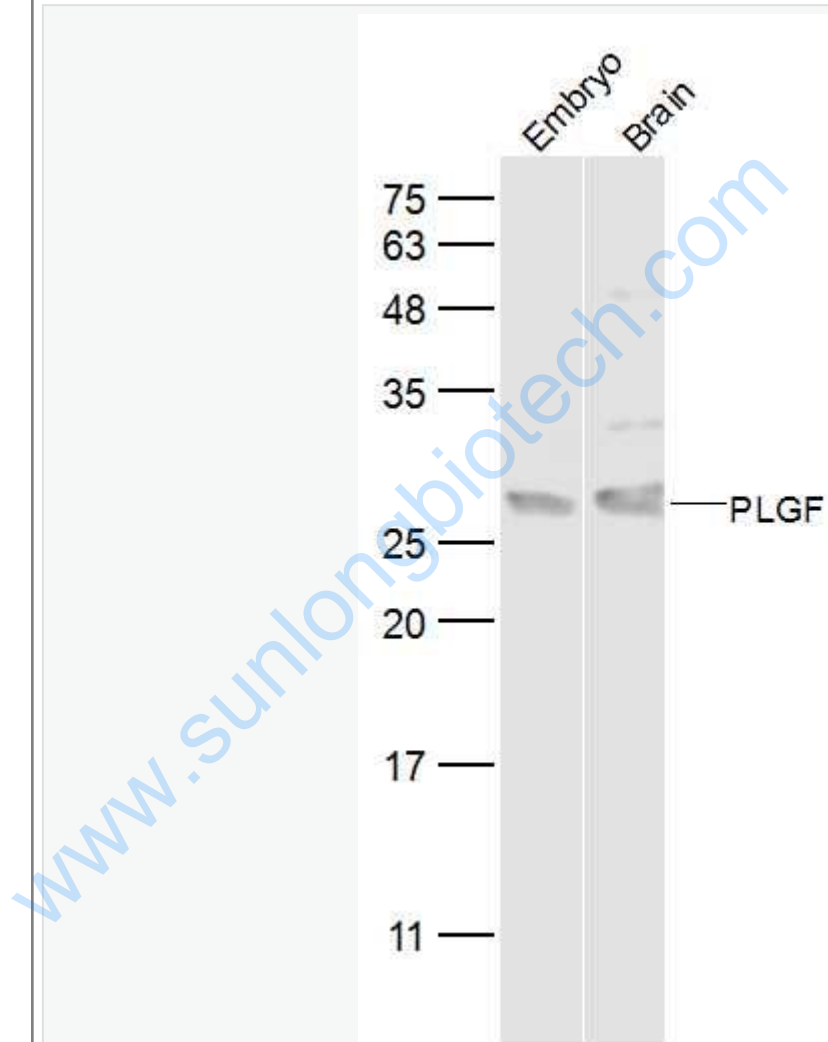
[Unigene: 4809](#)Mouse

**Important Note:**

This product as supplied is intended for research use only, not for use in human, therapeutic or diagnostic applications.

PLGF胎盘生长因子是血管生长因子家族成员之一，是动脉粥样硬化斑块不稳定的主要炎性激活物，因此它可作为ACS患者风险预测的生物学Marker.尿胎盘生长因子水平可预测先兆子痫危险.研究人员发现，在疾病发作前的6到8周，先兆子痫患者尿液中的胎盘生长因子水平急剧下降,这种新的尿检方法使提前1到2个月预测先兆子痫成为可能。亦有研究人员正在从事胎盘生长因子与肺气肿，胃癌，肠癌等方面的研究。

Picture:



Sample:

Embryo (Mouse) Lysate at 40 ug

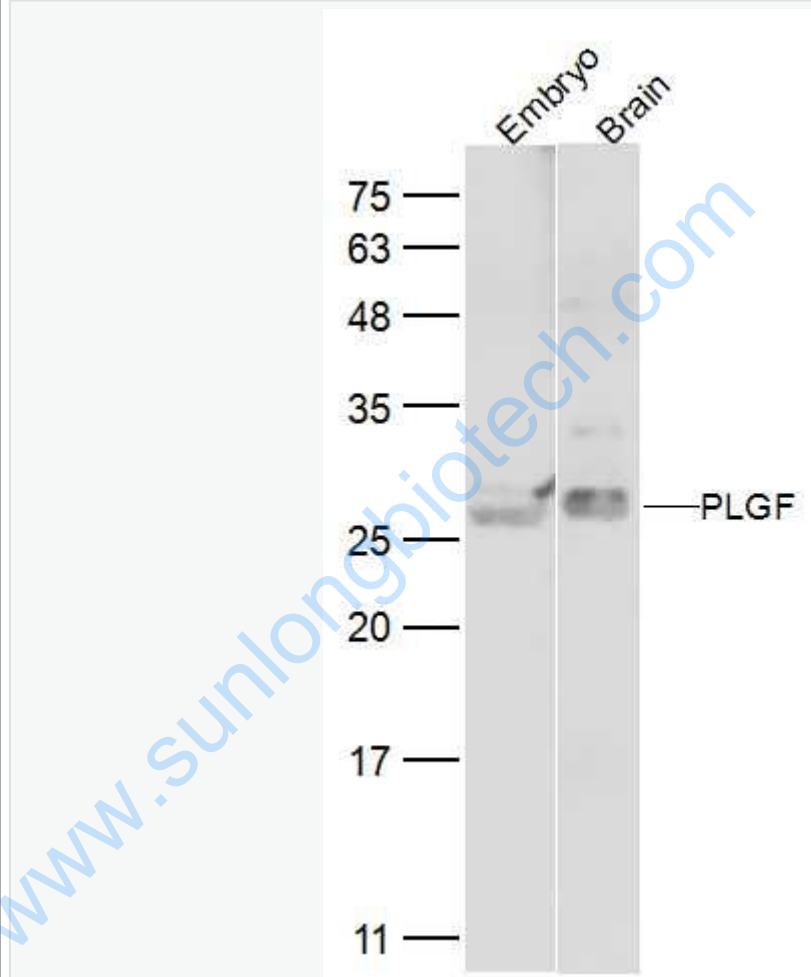
Brain (Mouse) Lysate at 40 ug

Primary: Anti-PLGF (SL0234R) at 1/500 dilution

Secondary: IRDye800CW Goat Anti-Rabbit IgG at 1/20000 dilution

Predicted band size: 16 kD

Observed band size: 27 kD



Sample:

Embryo (Mouse) Lysate at 40 ug

Brain (Mouse) Lysate at 40 ug

Primary: Anti-PLGF (SL0234R) at 1/2000 dilution

Secondary: IRDye800CW Goat Anti-Rabbit IgG at 1/20000 dilution

	<p>Predicted band size: 16 kD</p>
--	-----------------------------------

	<p>Observed band size: 27 kD</p>
--	----------------------------------

[www.sunlongbiotech.com](http://www.sunlongbiotech.com)