



Rabbit Anti-EphB2 antibody

SL0247R

Product Name:	EphB2
Chinese Name:	酪氨酸蛋白激酶受体B2抗体
Alias:	Eph receptor B2; Developmentally regulated EPH related tyrosine kinase; DRT; ELK related protein tyrosine kinase; EPH tyrosine kinase 3; EphB2; Ephrin type B receptor 2; EPHT 3; ERK; ETECK; Nuk; Prkm 5; Receptor protein tyrosine kinase HEK 5, Sek 3; Tyro 5; Tyrosine protein kinase receptor CEK 5; Tyrosine protein kinase receptor EPH 3; Tyrosine protein kinase receptor QEK 5; EPHB2_HUMAN.
Organism Species:	Rabbit
Clonality:	Polyclonal
React Species:	Human,Mouse,Rat,Chicken,Dog,
Applications:	WB=1:500-2000ELISA=1:500-1000IHC-P=1:400-800IHC-F=1:400-800ICC=1:100-500IF=1:100-500 (Paraffin sections need antigen repair) not yet tested in other applications. optimal dilutions/concentrations should be determined by the end user.
Molecular weight:	114kDa
Cellular localization:	The cell membrane
Form:	Lyophilized or Liquid
Concentration:	1mg/ml
immunogen:	KLH conjugated synthetic peptide derived from human EphB2 R:101-200/1055<Extracellular>
Lsotype:	IgG
Purification:	affinity purified by Protein A
Storage Buffer:	0.01M TBS(pH7.4) with 1% BSA, 0.03% Proclin300 and 50% Glycerol.
Storage:	Store at -20 °C for one year. Avoid repeated freeze/thaw cycles. The lyophilized antibody is stable at room temperature for at least one month and for greater than a year when kept at -20°C. When reconstituted in sterile pH 7.4 0.01M PBS or diluent of antibody the antibody is stable for at least two weeks at 2-4 °C.
PubMed:	PubMed
Product Detail:	Eph receptors play important roles in axon guidance at the midline. In the auditory system, growth of axons across the midline is an important determinant of auditory

function. The avian cochlear nucleus, n. magnocellularis (NM), makes bilateral projections to its target, n. laminaris (NL).

Subunit:

Heterotetramer upon binding of the ligand. The heterotetramer is composed of an ephrin dimer and a receptor dimer. Oligomerization is probably required to induce biological responses. Interacts (via PDZ-binding motif) with GRIP1 and PICK1 (via PDZ domain). Interacts with ARHGEF15; mediates ARHGEF15 phosphorylation, ubiquitination and degradation by the proteasome. Interacts with AQP1; involved in endolymph production in the inner ear.

Subcellular Location:

Cell membrane; Single-pass type I membrane protein. Cell projection, axon. Cell projection, dendrite.

Tissue Specificity:

Brain, heart, lung, kidney, placenta, pancreas, liver and skeletal muscle. Preferentially expressed in fetal brain.

DISEASE:

Defects in EPHB2 may be a cause of susceptibility to prostate cancer (PC) [MIM:176807]. It is a malignancy originating in tissues of the prostate. Most prostate cancers are adenocarcinomas that develop in the acini of the prostatic ducts. Other rare histopathologic types of prostate cancer that occur in approximately 5% of patients include small cell carcinoma, mucinous carcinoma, prostatic ductal carcinoma, transitional cell carcinoma, squamous cell carcinoma, basal cell carcinoma, adenoid cystic carcinoma (basaloid), signet-ring cell carcinoma and neuroendocrine carcinoma. Note=EPHB2 mutations have been found in a prostate cancer cell line derived from a brain metastasis.

Similarity:

Belongs to the protein kinase superfamily. Tyr protein kinase family. Ephrin receptor subfamily.

Contains 1 Eph LBD (Eph ligand-binding) domain.

Contains 2 fibronectin type-III domains.

Contains 1 protein kinase domain.

Contains 1 SAM (sterile alpha motif) domain.

SWISS:

P29323

Gene ID:

2048

Database links:

[Entrez Gene: 2048](#)Human

[Entrez Gene: 13844](#)Mouse

[Omin: 600997](#)Human

[SwissProt: P29323](#)Human

[SwissProt: P54763](#)Mouse

[Unigene: 523329](#)Human

[Unigene: 250981](#)Mouse

Important Note:

This product as supplied is intended for research use only, not for use in human, therapeutic or diagnostic applications.

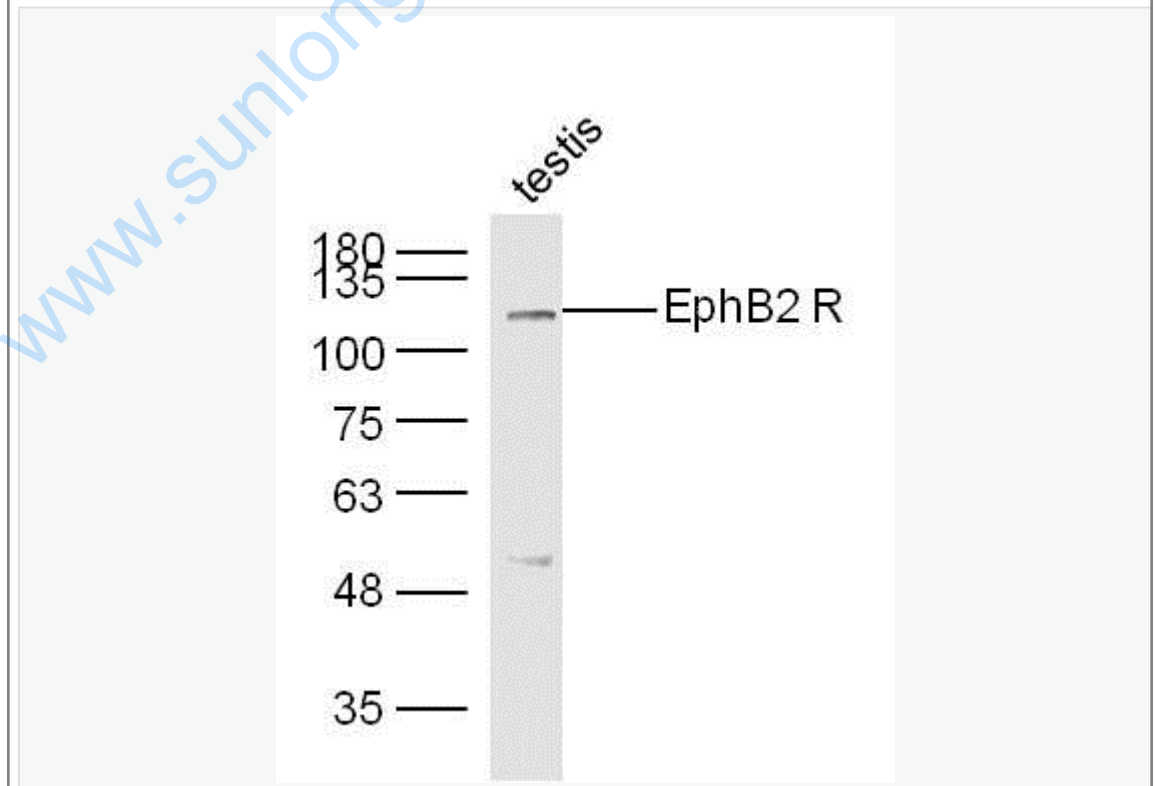
Growth factors and hormones (Growth Factor and Hormones)

EphB2受体(Ephrin type-B receptor 2)在细胞生长、分化和Signal

transduction过程中具有重要作用。有报道: EphB2受体(ephlinB2受体)

在中枢神经组织, Tumour组织有较强的表达。促进Tumour细胞浸润和新生血管形成。

Picture:



Sample:

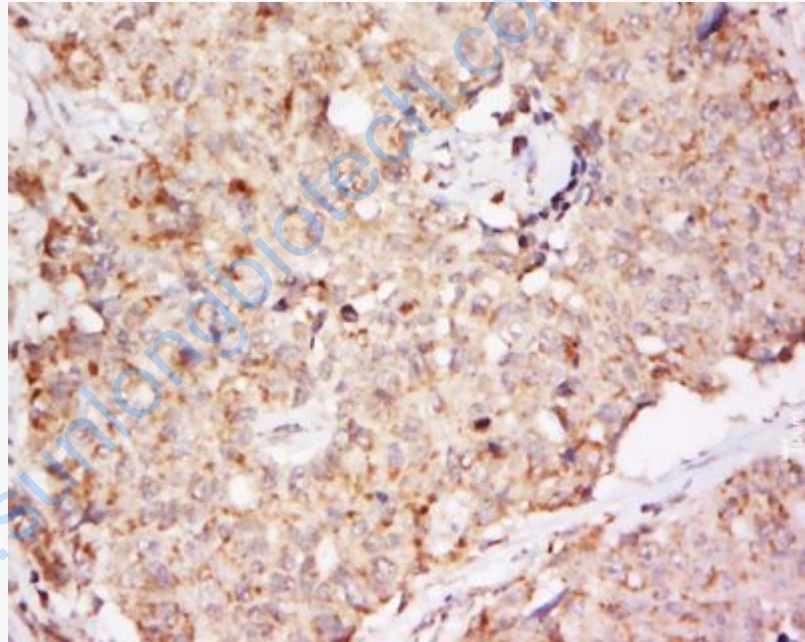
Testis (Mouse) Lysate at 40 ug

Primary: Anti-EphB2 R (SL0247R) at 1/300 dilution

Secondary: IRDye800CW Goat Anti-Rabbit IgG at 1/20000 dilution

Predicted band size: 114 kD

Observed band size: 114 kD

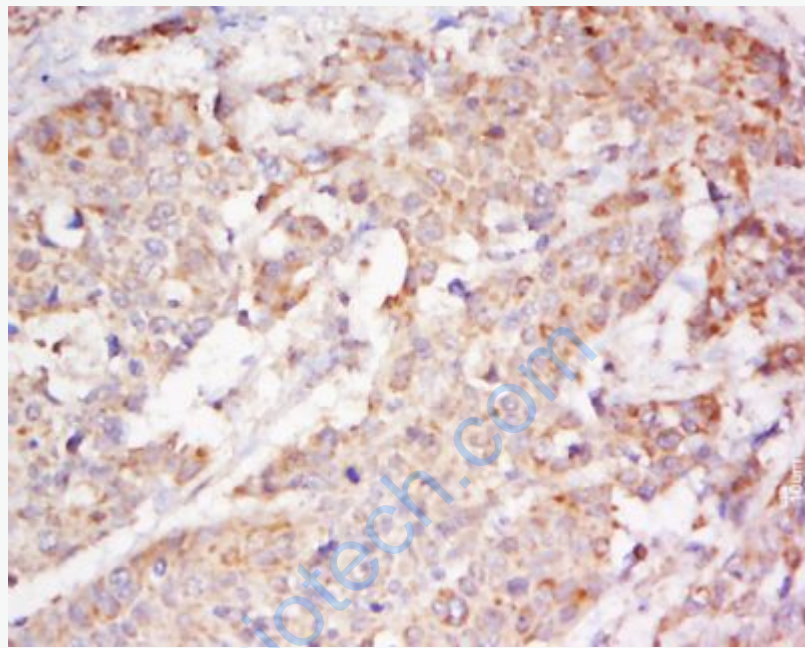


Tissue/cell: human colon carcinoma; 4% Paraformaldehyde-fixed and paraffin-embedded;

Antigen retrieval: citrate buffer (0.01M, pH 6.0), Boiling bathing for 15min; Block endogenous peroxidase by 3% Hydrogen peroxide for 30min; Blocking buffer (normal goat serum,C-0005) at 37°C for 20 min;

Incubation: Anti-EphB2 R Polyclonal Antibody, Unconjugated(SL0247R) 1:500, overnight at 4°C, followed by conjugation to the secondary antibody(SP-0023) and

DAB(C-0010) staining



Tissue/cell: human lung carcinoma; 4% Paraformaldehyde-fixed and paraffin-embedded;

Antigen retrieval: citrate buffer (0.01M, pH 6.0), Boiling bathing for 15min; Block endogenous peroxidase by 3% Hydrogen peroxide for 30min; Blocking buffer (normal goat serum,C-0005) at 37°C for 20 min;

Incubation: Anti-EphB2 R Polyclonal Antibody, Unconjugated(SL0247R) 1:500, overnight at 4°C, followed by conjugation to the secondary antibody(SP-0023) and DAB(C-0010) staining