



Rabbit Anti-Cytomegalovirus pp65 antibody

SL0271R

Product Name:	Cytomegalovirus pp65
Chinese Name:	巨细胞病毒PP65/CMV低基质磷Lipoprotein抗体
Alias:	PP65_HCMVM; PP65_HCMVA; 65 kDa lower matrix phosphoprotein; 65 kDa matrix phosphoprotein; 65 kDa phosphoprotein; CMV 65 kDa lower matrix phosphoprotein; CMV pp65; Cytomegalovirus 65 kDa lower matrix phosphoprotein; Cytomegalovirus pp65; HHV 5; PP65; Tegument protein pp65; Tegument protein UL83; UL83; HCMV PP65.
Organism Species:	Rabbit
Clonality:	Polyclonal
React Species:	Human,HCMVPP65
Applications:	WB=1:500-2000ELISA=1:500-1000IHC-P=1:400-800IHC-F=1:400-800IF=1:100-500 (Paraffin sections need antigen repair) not yet tested in other applications. optimal dilutions/concentrations should be determined by the end user.
Molecular weight:	65kDa
Form:	Lyophilized or Liquid
Concentration:	1mg/ml
immunogen:	KLH conjugated synthetic peptide derived from PP65_HCMVM:251-350/561
Lsotype:	IgG
Purification:	affinity purified by Protein A
Storage Buffer:	0.01M TBS(pH7.4) with 1% BSA, 0.03% Proclin300 and 50% Glycerol.
Storage:	Store at -20 °C for one year. Avoid repeated freeze/thaw cycles. The lyophilized antibody is stable at room temperature for at least one month and for greater than a year when kept at -20°C. When reconstituted in sterile pH 7.4 0.01M PBS or diluent of antibody the antibody is stable for at least two weeks at 2-4 °C.
PubMed:	PubMed
Product Detail:	Cytomegalovirus is a member of the herpes virus group, which includes herpes simplex virus types 1 and 2, varicella zoster virus (which causes chicken pox), and Epstein Barr virus (which causes infectious mononucleosis). These viruses share a characteristic ability to remain dormant within the body over a long period. CMV viral genes are co-

ordinately expressed in groups at various times after infection. Early viral proteins are expressed in the nucleus of infected cells within 3 to 24 hours of infection prior to the commencement of viral DNA replication. This is followed by expression of the early intermediate genes, which encode enzymes required for viral DNA replication. After 48 to 72 hours, a number of late viral antigens may be demonstrated in the nuclei and cytoplasm of infected cells. pp65 is a 65kD phosphorylated glycoprotein and is the most abundant of the late antigens.

Function:

Counteracts the host antiviral immune response by preventing IRF3 to enter the nucleus once activated and phosphorylated. Participates also in the transactivation of viral major immediate-early genes by recruiting host IFI16 to their promoters.

Subunit:

Interacts with host NCL/nucleolin. Interacts with host IFI16.

Subcellular Location:

Virion tegument (Potential). Host nucleus. Host cytoplasm. Note=As part of the incoming virion, pp65 is targeted to the nucleus immediately after infection. The newly synthesized pp65 is observed in the nucleus until some time after 48 hours postinfection. Thereafter, pp65 is probably exported and accumulates in the cytoplasm. Also found in dense bodies.

Post-translational modifications:

Phosphorylation may play a role in the localization of the protein.

Similarity:

Belongs to the herpesviridae pp65 family.

SWISS:

Q6SW59

Gene ID:

3077579

Database links:

[Entrez Gene:3077579](#) Human herpesvirus 5

Important Note:

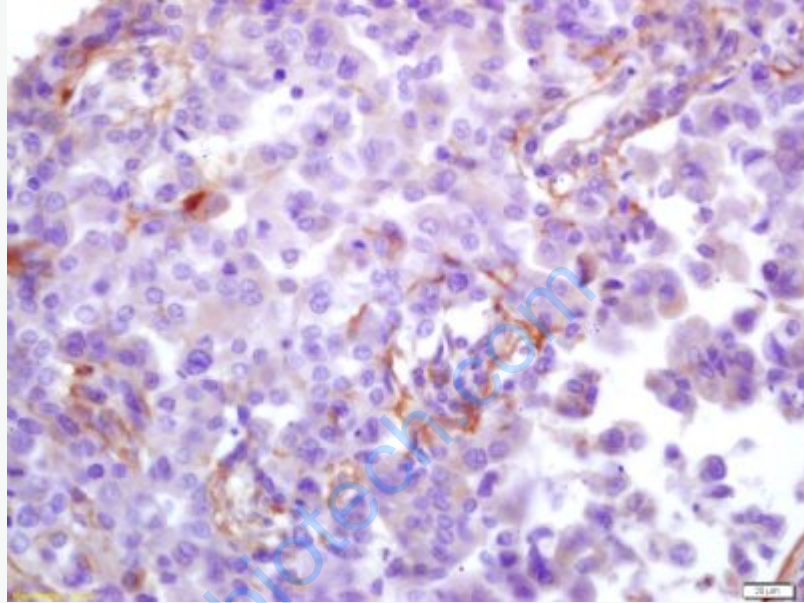
This product as supplied is intended for research use only, not for use in human, therapeutic or diagnostic applications.

细胞巨化病毒是一种疱疹病毒,

易引起先天性畸形, 且患者在接受大量输血和免疫抑制力治疗时它是引起并发症的主要生物因子。

巨细胞病毒是一种感染肺、肾、肠和其他器官的条件致病菌。该抗体识别分子量为5

2、65、72以及86kDa的立即早期非结构抗原。该抗原在感染2小时后即可被检测到。而感染96小时达到峰值, 并持续整个CMV周期。
初期感染此病毒的孕妇中近一半会将此病传播给她的胎儿, 被传染的胎儿长大后易智力低下, 失明或耳聋。



Picture:

Tissue/cell: human lung carcinoma; 4% Paraformaldehyde-fixed and paraffin-embedded;

Antigen retrieval: citrate buffer (0.01M, pH 6.0), Boiling bathing for 15min; Block endogenous peroxidase by 3% Hydrogen peroxide for 30min; Blocking buffer (normal goat serum,C-0005) at 37°C for 20 min;

Incubation: Anti-Cytomegalovirus pp65 Polyclonal Antibody,

Unconjugated(SL0271R) 1:200, overnight at 4°C, followed by conjugation to the secondary antibody(SP-0023) and DAB(C-0010) staining