




Rabbit Anti-PLGF antibody

SL0280R

Product Name:	PLGF
Chinese Name:	胎盘生长因子抗体
Alias:	Placenta growth factor; PGF; PGFL; PIGF; Placental growth factor vascular endothelial growth factor related protein; PIGF 2; PLGF; PIGF2; PLGF_MOUSE; Vascular endothelial growth factor related protein.
文献引用 	<p>Specific References(2) SL0280R has been referenced in 2 publications.</p> <p>[IF=2.70]Zhang, Liang, et al. "Placenta growth factor contributes to cell apoptosis and epithelial-to-mesenchymal transition in the hyperoxia-induced acute lung injury." Life Sciences (2016).WB;Rat. PubMed:27211521</p> <p>[IF=2.47]Zhang, Liang, et al. "Knockdown of placental growth factor (PLGF) mitigates hyperoxia-induced acute lung injury in neonatal rats: Suppressive effects on NFκB signaling pathway." International Immunopharmacology 38 (2016): 167-174.WB;Rat. PubMed:27280587</p>
Organism Species:	Rabbit
Clonality:	Polyclonal
React Species:	Mouse,Rat,Pig,
Applications:	WB=1:500-2000ELISA=1:500-1000IHC-P=1:400-800 (Paraffin sections need antigen repair) not yet tested in other applications. optimal dilutions/concentrations should be determined by the end user.
Molecular weight:	16kDa
Cellular localization:	Secretory protein
Form:	Lyophilized or Liquid
Concentration:	1mg/ml

immunogen:	KLH conjugated synthetic peptide derived from mouse PLGF:101-158/158
Lsotype:	IgG
Purification:	affinity purified by Protein A
Storage Buffer:	0.01M TBS(pH7.4) with 1% BSA, 0.03% Proclin300 and 50% Glycerol.
Storage:	Store at -20 °C for one year. Avoid repeated freeze/thaw cycles. The lyophilized antibody is stable at room temperature for at least one month and for greater than a year when kept at -20°C. When reconstituted in sterile pH 7.4 0.01M PBS or diluent of antibody the antibody is stable for at least two weeks at 2-4 °C.
PubMed:	PubMed
Product Detail:	<p>This gene encodes a growth factor found in placenta which is homologous to vascular endothelial growth factor. Alternatively spliced transcripts encoding different isoforms have been found for this gene.[provided by RefSeq, Jun 2011]</p> <p>Function: Growth factor active in angiogenesis and endothelial cell growth, stimulating their proliferation and migration. It binds to the receptor FLT1/VEGFR-1. Isoform PIGF-2 binds NRP1/neuropilin-1 and NRP2/neuropilin-2 in a heparin-dependent manner.</p> <p>Subunit: Antiparallel homodimer; disulfide-linked. Also found as heterodimer with VEGFA/VEGF.</p> <p>Subcellular Location: Secreted. The three isoforms are secreted but PIGF-2 appears to remain cell attached unless released by heparin.</p> <p>Tissue Specificity: While the three isoforms are present in most placental tissues, PIGF-2 is specific to early (8 week) placenta and only PIGF-1 is found in the colon and mammary carcinomas.</p> <p>Post-translational modifications: N-glycosylated.</p> <p>Similarity: Belongs to the PDGF/VEGF growth factor family.</p> <p>SWISS: P49764</p> <p>Gene ID: 18654</p> <p>Database links:</p>

[Entrez Gene: 5228](#) Human

[Entrez Gene: 18654](#) Mouse

[Entrez Gene: 94203](#) Rat

[Omim: 601121](#) Human

[SwissProt: P49763](#) Human

[SwissProt: P49764](#) Mouse

[SwissProt: Q63434](#) Rat

[Unigene: 252820](#) Human

[Unigene: 4809](#) Mouse

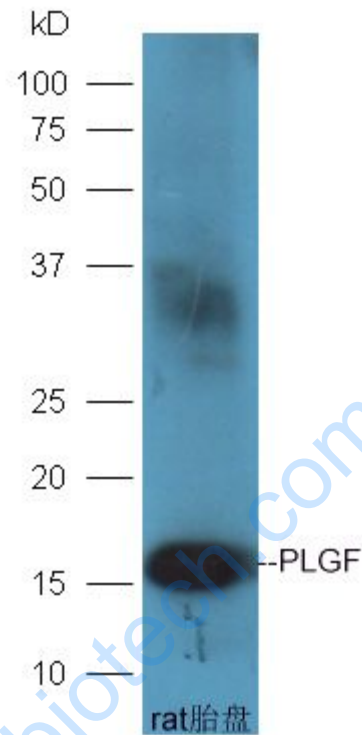
[Unigene: 6960](#) Rat

Important Note:

This product as supplied is intended for research use only, not for use in human, therapeutic or diagnostic applications.

PLGF胎盘生长因子是血管生长因子家族成员之一(又称:胎盘型vascular endothelial cell生长因子), 是动脉粥样硬化斑块不稳定的主要炎性激活物, 因此它可作为ACS患者风险预测的生物学Marker.尿胎盘生长因子水平可预测先兆子痫危险.研究人员发现, 在疾病发作前的6到8周, 先兆子痫患者尿液中的胎盘生长因子水平急剧下降,这种新的尿检方法使提前1到2个月预测先兆子痫成为可能。亦有研究人员正在从事胎盘生长因子与肺气肿, 胃癌, 肠癌等方面的研究。

Picture:



Sample: Placenta (Rat) Lysate at 30 ug

Primary: rabbit Anti-PLGF (SL0280R) at 1:300 dilution;

Secondary: HRP conjugated Goat-Anti-rabbit IgG(SL0280R) at 1: 5000 dilution;

Predicted band size:16 kD

Observed band size:16 kD