



Rabbit Anti-Mesothelin antibody

SL0300R

Product Name:	Mesothelin
Chinese Name:	间皮素抗体
Alias:	Mesothelin; MES; CAK 1; CAK1; CAK1 antigen; Megakaryocyte potentiating factor; Mesothelin isoform 1 precursor; MPF; MSLN; Pre pro megakaryocyte potentiating factor; SMR; SMRP; Soluble MPF mesothelin related protein; MSLN_HUMAN.
Organism Species:	Rabbit
Clonality:	Polyclonal
React Species:	Human,
Applications:	WB=1:500-2000ELISA=1:500-1000Flow-Cyt=1µg/Test not yet tested in other applications. optimal dilutions/concentrations should be determined by the end user.
Molecular weight:	64kDa
Cellular localization:	The cell membraneSecretory protein
Form:	Lyophilized or Liquid
Concentration:	1mg/ml
immunogen:	KLH conjugated synthetic peptide derived from human Mesothelin:101-200/630
Lsotype:	IgG
Purification:	affinity purified by Protein A
Storage Buffer:	0.01M TBS(pH7.4) with 1% BSA, 0.03% Proclin300 and 50% Glycerol.
Storage:	Store at -20 °C for one year. Avoid repeated freeze/thaw cycles. The lyophilized antibody is stable at room temperature for at least one month and for greater than a year when kept at -20°C. When reconstituted in sterile pH 7.4 0.01M PBS or diluent of antibody the antibody is stable for at least two weeks at 2-4 °C.
PubMed:	PubMed
Product Detail:	Mesothelin(MSLN)may play a role in cell adhesion and cell shape dynamics; human homolog highly expressed in renal cell carcinoma. malignant tumors, such as a skin lump, ovary cancer and the pancreas cancer...etc..Mainly used for the research of the malignant tumor. Function:

Membrane-anchored forms may play a role in cellular adhesion. Megakaryocyte-potentiating factor (MPF) potentiates megakaryocyte colony formation in vitro.

Subunit:

Interacts with MUC16.

Subcellular Location:

Cell membrane; Lipid-anchor, GPI-anchor. Golgi apparatus.

Megakaryocyte-potentiating factor: Secreted.

Isoform 3: Secreted.

Tissue Specificity:

Expressed in lung. Expressed at low levels in heart, placenta and kidney. Expressed in mesothelial cells. Highly expressed in mesotheliomas, ovarian cancers, and some squamous cell carcinomas (at protein level).

Post-translational modifications:

Both MPF and the cleaved form of mesothelin are N-glycosylated.

Proteolytically cleaved by a furin-like convertase to generate megakaryocyte-potentiating factor (MPF), and the cleaved form of mesothelin.

Similarity:

Belongs to the mesothelin family.

SWISS:

Q13421

Gene ID:

10232

Database links:

[Entrez Gene: 10232](#) Human

[Omim: 601051](#) Human

[SwissProt: Q13421](#) Human

[Unigene: 408488](#) Human

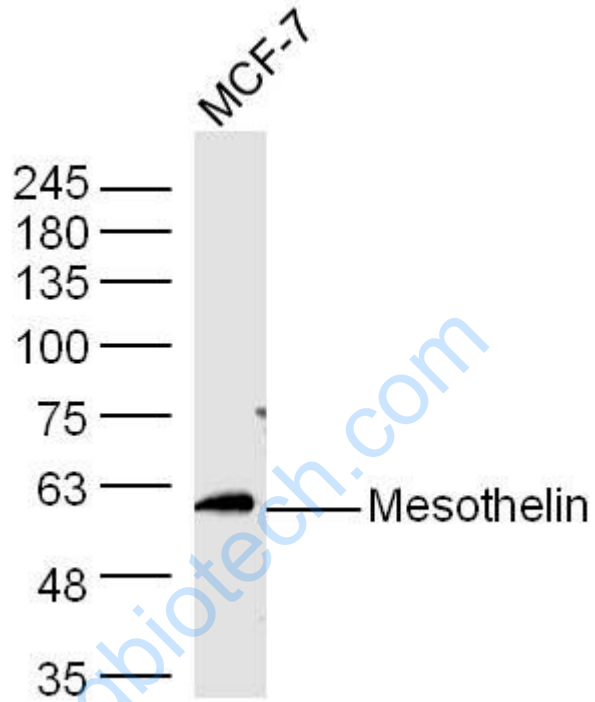
Important Note:

This product as supplied is intended for research use only, not for use in human, therapeutic or diagnostic applications.

间皮素 (mesothelin, MSLN) 是一种相对分子量: 64kDa的细胞表面glycoprotein,

在间皮瘤、卵巢癌、胰腺癌等恶性Tumour中有较高的表达。主要用于恶性Tumour的研究。

Picture:



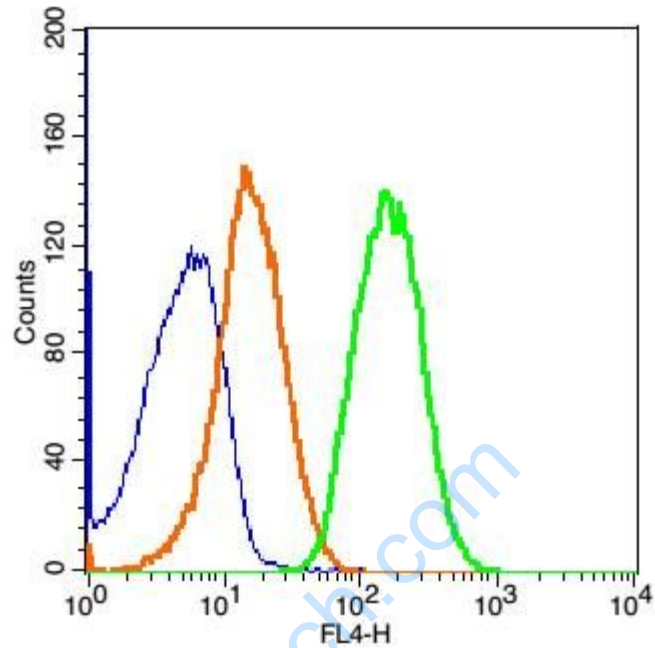
Sample: MCF-7 Cell Lysate at 40 ug

Primary: Anti- Mesothelin (SL0300R) at 1/300 dilution

Secondary: IRDye800CW Goat Anti-Rabbit IgG at 1/20000 dilution

Predicted band size: 64 kD

Observed band size: 62 kD



Blank control: HeLa(blue).

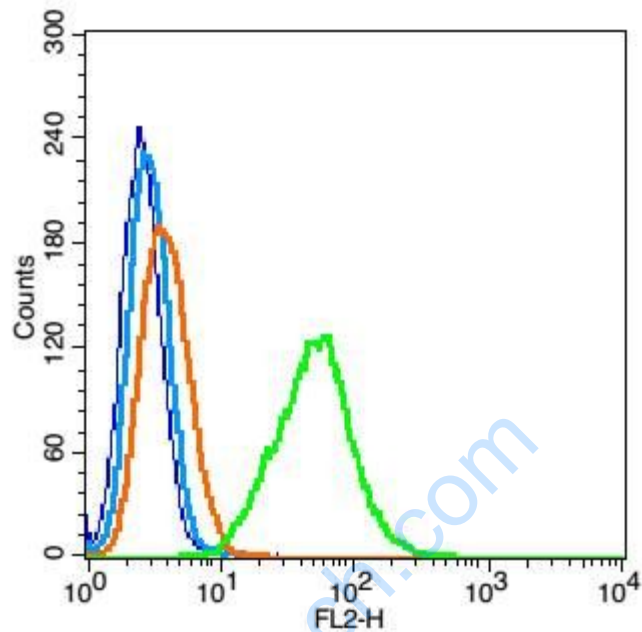
Primary Antibody: Rabbit Anti-Mesothelin/AF647 Conjugated antibody (SL0300R),

Dilution: 0.2 μ g in 100 μ L 1X PBS containing 0.5% BSA;

Isotype Control Antibody: Rabbit IgG/AF647(orange) ,used under the same conditions.

Protocol

The cells were washed twice with phosphate-buffered saline (PBS). The cells were incubated in 1 X PBS containing 0.5% BSA + 1 0% goat serum (15 min) to block non-specific protein-protein interactions followed by the antibody (SL0300R) for 30 min on ice. Acquisition of 20,000 events was performed.



Blank control: A549(blue), the cells were fixed with 2% paraformaldehyde (10 min) and then permeabilized with ice-cold 90% methanol for 30 min on ice..

Isotype Control Antibody: Rabbit IgG(orange) ; Secondary Antibody: Goat anti-rabbit IgG-FITC(white blue), Dilution: 1:100 in 1 X PBS containing 0.5% BSA ;

Primary Antibody Dilution: 1 μ l in 100 μ L 1X PBS containing 0.5% BSA(green).