



## Rabbit Anti-BRI3BP antibody

SL0402R

<b>Product Name:</b>	BRI3BP
<b>Chinese Name:</b>	宫颈癌原基因1/bri3Binding protein抗体
<b>Alias:</b>	BRI3-binding protein; HCCR-1; HCCR1; HCCRBP-1; I3-binding protein; Cervical cancer 1 proto-oncogene-binding protein KG19; I3-binding protein; BRI3B_HUMAN; BRI3BP.
<b>Organism Species:</b>	Rabbit
<b>Clonality:</b>	Polyclonal
<b>React Species:</b>	Human,Mouse,Rat,Chicken,Dog,Cow,
<b>Applications:</b>	ELISA=1:500-1000IHC-P=1:400-800IHC-F=1:400-800IF=1:100-500 (Paraffin sections need antigen repair) not yet tested in other applications. optimal dilutions/concentrations should be determined by the end user.
<b>Molecular weight:</b>	28kDa
<b>Cellular localization:</b>	cytoplasmicThe cell membrane
<b>Form:</b>	Lyophilized or Liquid
<b>Concentration:</b>	1mg/ml
<b>immunogen:</b>	KLH conjugated synthetic peptide derived from human BRI3BP:188-251/251
<b>Lsotype:</b>	IgG
<b>Purification:</b>	affinity purified by Protein A
<b>Storage Buffer:</b>	0.01M TBS(pH7.4) with 1% BSA, 0.03% Proclin300 and 50% Glycerol.
<b>Storage:</b>	Store at -20 °C for one year. Avoid repeated freeze/thaw cycles. The lyophilized antibody is stable at room temperature for at least one month and for greater than a year when kept at -20°C. When reconstituted in sterile pH 7.4 0.01M PBS or diluent of antibody the antibody is stable for at least two weeks at 2-4 °C.
<b>PubMed:</b>	<a href="#">PubMed</a>
<b>Product Detail:</b>	BRI3BP is a 251 amino acid multi-pass membrane protein. Though widely expressed, BRI3BP is found at highest levels in brain, kidney and liver where it localizes to the endoplasmic reticulum (ER) and is involved in ER structural dynamics and mitochondrial viability. Possessing pro-apoptotic properties and the ability to potentiate drug-induced apoptosis, BRI3BP overexpression has been shown to enhance caspase-3

and mitochondrial cytochrome c release in etoposide-treated human embryonic kidney 293T cells. The gene encoding BRI3BP maps to human chromosome 12, which encodes over 1,100 genes and comprises approximately 4.5% of the human genome. Chromosome 12 is associated with a variety of diseases and afflictions, including hypochondrogenesis, achondrogenesis, Kniest dysplasia, Noonan syndrome and trisomy 12p, which causes facial developmental defects and seizure disorders.

**Function:**

Involved in tumorigenesis and may function by stabilizing p53/TP53.

**Subunit:**

Interacts with LETMD1.

**Subcellular Location:**

Mitochondrion outer membrane; Multi-pass membrane protein (Probable).

**Tissue Specificity:**

Most abundantly expressed in brain, liver and kidney. Overexpressed in leukemia and lymphoma cell lines, as well as in various carcinomas.

**SWISS:**

Q8WY22

**Gene ID:**

140707

**Database links:**

[Entrez Gene: 140707](#) Human

[Entrez Gene: 76809](#) Mouse

[SwissProt: Q8WY22](#) Human

[SwissProt: Q8BXV2](#) Mouse

[Unigene: 596464](#) Human

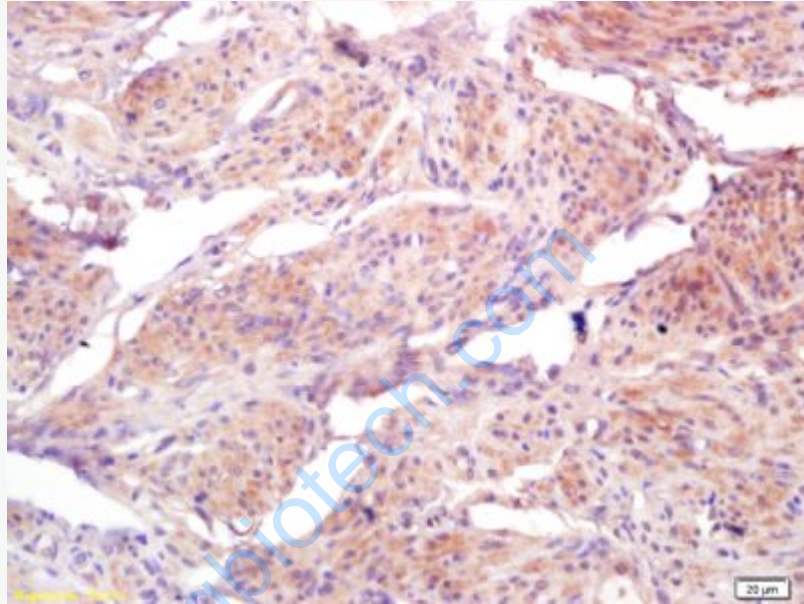
[Unigene: 290720](#) Mouse

**Important Note:**

This product as supplied is intended for research use only, not for use in human, therapeutic or diagnostic applications.

人宫颈癌基因(HCCR)是新近确定的一种癌基因, 人宫颈癌蛋白: HCCR-

1和HCCR-2两种蛋白。HCCR1不仅在宫颈癌组织中表达,而且在人其他Tumour如白血病、淋巴瘤、乳腺癌、肾B癌、胃癌、结肠癌、肝癌和子宫癌中均有过度表达,可作为肝癌及乳腺癌诊断的Marker。



Picture:

Tissue/cell: human cervical carcinoma; 4% Paraformaldehyde-fixed and paraffin-embedded;

Antigen retrieval: citrate buffer ( 0.01M, pH 6.0 ), Boiling bathing for 15min; Block endogenous peroxidase by 3% Hydrogen peroxide for 30min; Blocking buffer (normal goat serum,C-0005) at 37°C for 20 min;

Incubation: Anti-HCCR1/BRI3BP Polyclonal Antibody, Unconjugated(SL0402R) 1:200, overnight at 4°C, followed by conjugation to the secondary antibody(SP-0023) and DAB(C-0010) staining