



Rabbit Anti-Leptin antibody

SL0409R

| | |
|-------------------------------|----------------------------------------------------------------------------------------------------------------------------------------------------------------------------------------------------------------------------------------------------------------------------------------------------------------------------------------------------------------------------------------------------------------------------------------------|
| Product Name: | Leptin |
| Chinese Name: | 瘦素抗体 |
| Alias: | LEP; Leptin Murine Obesity Homolog; Leptin Precursor Obesity Factor; OB; Obese Protein; Obesity; Obesity factor; Obesity homolog mouse; Obesity Murine Homolog Leptin; OBS; LEP HUMAN. |
| Organism Species: | Rabbit |
| Clonality: | Polyclonal |
| React Species: | Human,Mouse,Rat,Pig,Sheep, |
| Applications: | WB=1:500-2000ELISA=1:500-1000IHC-P=1:400-800IHC-F=1:400-800IF=1:100-500 (Paraffin sections need antigen repair) not yet tested in other applications. optimal dilutions/concentrations should be determined by the end user. |
| Molecular weight: | 16kDa |
| Cellular localization: | Secretory protein |
| Form: | Lyophilized or Liquid |
| Concentration: | 1mg/ml |
| immunogen: | KLH conjugated synthetic peptide derived from human Leptin:17-100/167 |
| Lsotype: | IgG |
| Purification: | affinity purified by Protein A |
| Storage Buffer: | 0.01M TBS(pH7.4) with 1% BSA, 0.03% Proclin300 and 50% Glycerol. |
| Storage: | Store at -20 °C for one year. Avoid repeated freeze/thaw cycles. The lyophilized antibody is stable at room temperature for at least one month and for greater than a year when kept at -20°C. When reconstituted in sterile pH 7.4 0.01M PBS or diluent of antibody the antibody is stable for at least two weeks at 2-4 °C. |
| PubMed: | PubMed |
| Product Detail: | Leptin, the product of the ob (obese) gene, is a 16kD protein consisting of 146 amino acid residues. Leptin is produced in the adipose tissue, and is considered to play an important role in appetite control, fat metabolism and regulation of body weight. It targets the central nervous system, particularly hypothalamus, affecting food intake. Leptin levels are high in most obese individuals. Studies have shown that it may also |

influence reproductive function.

Function:

May function as part of a signaling pathway that acts to regulate the size of the body fat depot. An increase in the level of LEP may act directly or indirectly on the CNS to inhibit food intake and/or regulate energy expenditure as part of a homeostatic mechanism to maintain constancy of the adipose mass.

Subunit:

Interacts with SIGLEC6.

Subcellular Location:

Secreted.

DISEASE:

Leptin deficiency (LEPD) [MIM:614962]: A rare disease characterized by low levels of serum leptin, severe hyperphagia and intractable obesity from an early age. Note=The disease is caused by mutations affecting the gene represented in this entry.

SWISS:

P50595

Gene ID:

3952

Database links:

[Entrez Gene: 3952](#)Human

[Entrez Gene: 16846](#)Mouse

[Entrez Gene: 25608](#)Rat

[Omim: 164160](#)Human

[SwissProt: P41159](#)Human

[SwissProt: P41160](#)Mouse

[SwissProt: Q29406](#)Pig

[SwissProt: P50596](#)Rat

[SwissProt: Q28603](#)Sheep

[Unigene: 194236](#)Human

[Unigene: 277072](#)Mouse

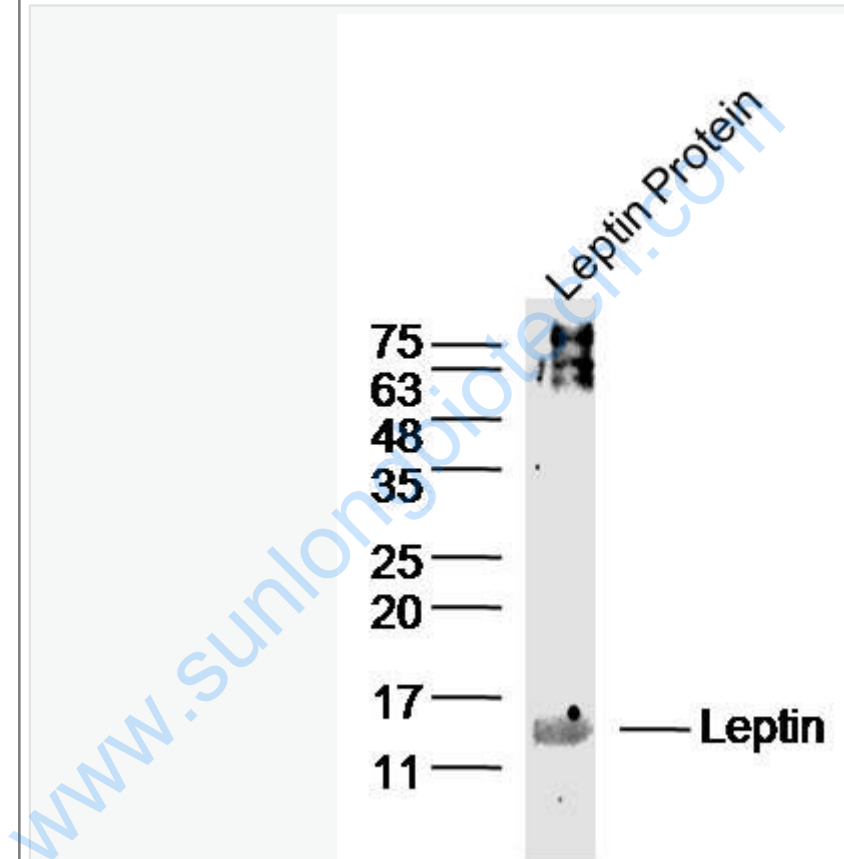
[Unigene: 44444](#)Rat

Important Note:

This product as supplied is intended for research use only, not for use in human, therapeutic or diagnostic applications.

Leptin是一种分子量为16kDa的脂肪组织源激素, 又称:肥胖蛋白(Obese-protein)是由脂肪细胞分泌的, 具有强亲水性, 以单体形式存在于血浆中。Leptin具有广泛的生物学效应, 作用于下丘脑, 调节食欲、能量代谢及体重。Leptin还可能作为脂肪-胰岛内分泌轴的一部分, 参与胰岛素分泌的调节。

Picture:



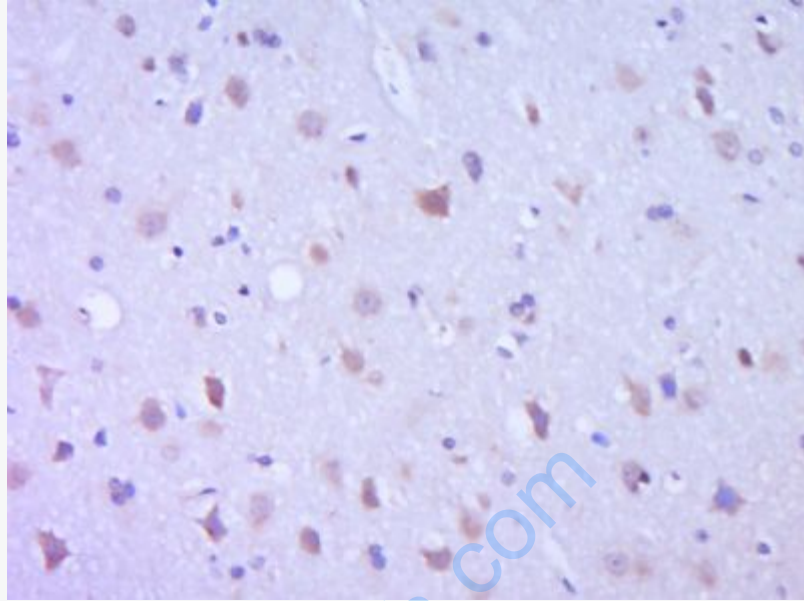
Sample: Leptin Protein (Human) at 100 ng

Primary: Anti-Leptin (SL0409R) at 1/300 dilution

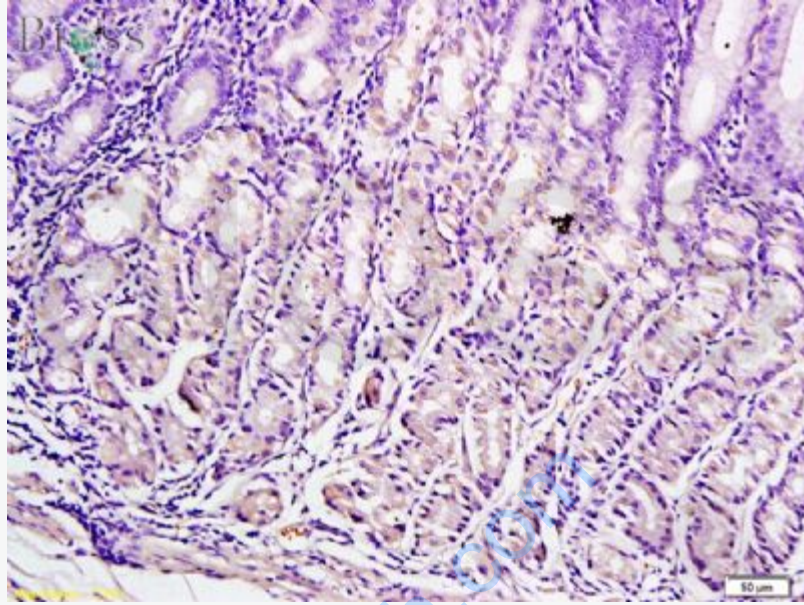
Secondary: IRDye800CW Goat Anti-Rabbit IgG at 1/20000 dilution

Predicted band size: 16 kD

Observed band size: 16 kD



Paraformaldehyde-fixed, paraffin embedded (Rat brain); Antigen retrieval by boiling in sodium citrate buffer (pH6.0) for 15min; Block endogenous peroxidase by 3% hydrogen peroxide for 20 minutes; Blocking buffer (normal goat serum) at 37°C for 30min; Antibody incubation with (Leptin) Polyclonal Antibody, Unconjugated (SL0409R) at 1:400 overnight at 4°C, followed by operating according to SP Kit(Rabbit) (sp-0023) instructions and DAB staining.



Paraformaldehyde-fixed, paraffin embedded (human stomach tissue); Antigen retrieval by boiling in sodium citrate buffer (pH6.0) for 15min; Block endogenous peroxidase by 3% hydrogen peroxide for 20 minutes; Blocking buffer (normal goat serum) at 37°C for 30min; Antibody incubation with (Leptin) Polyclonal Antibody, Unconjugated (SL0409R) at 1:400 overnight at 4°C, followed by a conjugated secondary (sp-0023) for 20 minutes and DAB staining.