



Rabbit Anti-IL1RAPL1 antibody

SL0445R

Product Name:	IL1RAPL1
Chinese Name:	白介素1受体相关蛋白样1前体蛋白抗体
Alias:	IL 1 RAPL 1; IL 1RAPL 1; IL-1-RAPL-1; IL-1RAPL-1; IL1R8; IL1RAPL 1; IL1RAPL; IL1RAPL-1; IL1RAPL1; Interleukin 1 receptor 8; Interleukin 1 receptor accessory protein like 1; Interleukin-1 receptor accessory protein-like 1; IRPL1_HUMAN; Mental retardation X linked 10; Mental retardation X linked 21; Mental retardation X linked 34; MRX 21; MRX 34; MRX10; MRX21; MRX34; Oligophrenin 4; Oligophrenin-4; Oligophrenin4; OPHN 4; OPHN4; Three immunoglobulin domain containing IL 1 receptor related 2; Three immunoglobulin domain-containing IL-1 receptor-related 2; TIGIRR 2; TIGIRR-2; TIGIRR2 antibody X linked interleukin 1 receptor accessory protein like 1; X-linked interleukin-1 receptor accessory protein-like 1.
Organism Species:	Rabbit
Clonality:	Polyclonal
React Species:	Human,Mouse,Rat,Chicken,Dog,Pig,Cow,Horse,Rabbit,Guinea Pig,
Applications:	WB=1:500-2000ELISA=1:500-1000IHC-P=1:400-800IHC-F=1:400-800Flow-Cyt=1µg/TestIF=1:100-500 (Paraffin sections need antigen repair) not yet tested in other applications. optimal dilutions/concentrations should be determined by the end user.
Molecular weight:	78kDa
Cellular localization:	cytoplasmicThe cell membrane
Form:	Lyophilized or Liquid
Concentration:	1mg/ml
immunogen:	KLH conjugated synthetic peptide derived from human IL1RAPL1:301-400/696
Lsotype:	IgG
Purification:	affinity purified by Protein A
Storage Buffer:	0.01M TBS(pH7.4) with 1% BSA, 0.03% Proclin300 and 50% Glycerol.
Storage:	Store at -20 °C for one year. Avoid repeated freeze/thaw cycles. The lyophilized antibody is stable at room temperature for at least one month and for greater than a year when kept at -20°C. When reconstituted in sterile pH 7.4 0.01M PBS or diluent of

	antibody the antibody is stable for at least two weeks at 2-4 °C.
PubMed:	PubMed
Product Detail:	<p>The protein encoded by this gene is a member of the interleukin 1 receptor family and is similar to the interleukin 1 accessory proteins. It is most closely related to interleukin 1 receptor accessory protein-like 2 (IL1RAPL2). This gene and IL1RAPL2 are located at a region on chromosome X that is associated with X-linked non-syndromic mental retardation. Deletions and mutations in this gene were found in patients with mental retardation. This gene is expressed at a high level in post-natal brain structures involved in the hippocampal memory system, which suggests a specialized role in the physiological processes underlying memory and learning abilities.</p> <p>Function: May regulate secretion and presynaptic differentiation through inhibition of the activity of N-type voltage-gated calcium channel. May activate the MAP kinase JNK.</p> <p>Subcellular Location: Cell membrane. Cytoplasm. May localize to the cell body and growth cones of dendrite-like processes.</p> <p>Tissue Specificity: Detected at low levels in heart, skeletal muscle, ovary, skin, amygdala, caudate nucleus, corpus callosum, hippocampus, substantia nigra and thalamus. Detected at very low levels in tonsil, prostate, testis, small intestine, placenta, colon and fetal liver.</p> <p>DISEASE: Defects in IL1RAPL1 are the cause of mental retardation X-linked type 21 (MRX21) [MIM:300143]. Mental retardation is a mental disorder characterized by significantly sub-average general intellectual functioning associated with impairments in adaptive behavior and manifested during the developmental period. Non-syndromic mental retardation patients do not manifest other clinical signs.</p> <p>Similarity: Belongs to the interleukin-1 receptor family. Contains 3 Ig-like C2-type (immunoglobulin-like) domains. Contains 1 TIR domain.</p> <p>SWISS: Q9NZN1</p> <p>Gene ID: 11141</p> <p>Database links: Entrez Gene: 11141Human</p>

[Entrez Gene: 331461](#)Mouse

[Oimim: 300206](#)Human

[SwissProt: Q9NZN1](#)Human

[SwissProt: P59823](#)Mouse

[Unigene: 658912](#)Human

[Unigene: 121680](#)Mouse

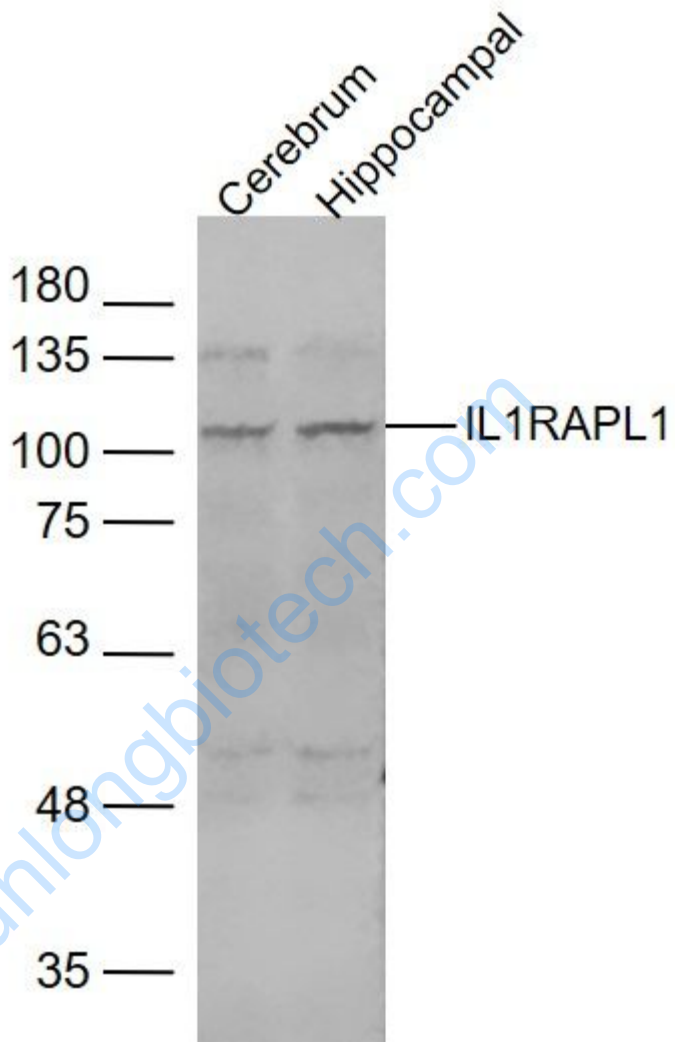
[Unigene: 426143](#)Mouse

Important Note:

This product as supplied is intended for research use only, not for use in human, therapeutic or diagnostic applications.

www.sunlongbiotech.com

Picture:



Sample:

Cerebrum (Mouse) Lysate at 40 ug

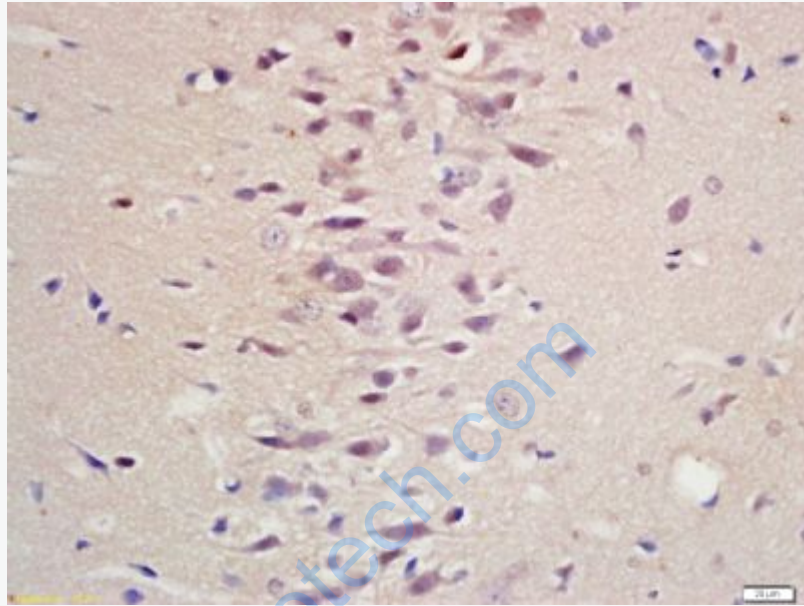
Hippocampal (Mouse) Lysate at 40 ug

Primary: Anti-IL1RAPL1 (SL0445R) at 1/1000 dilution

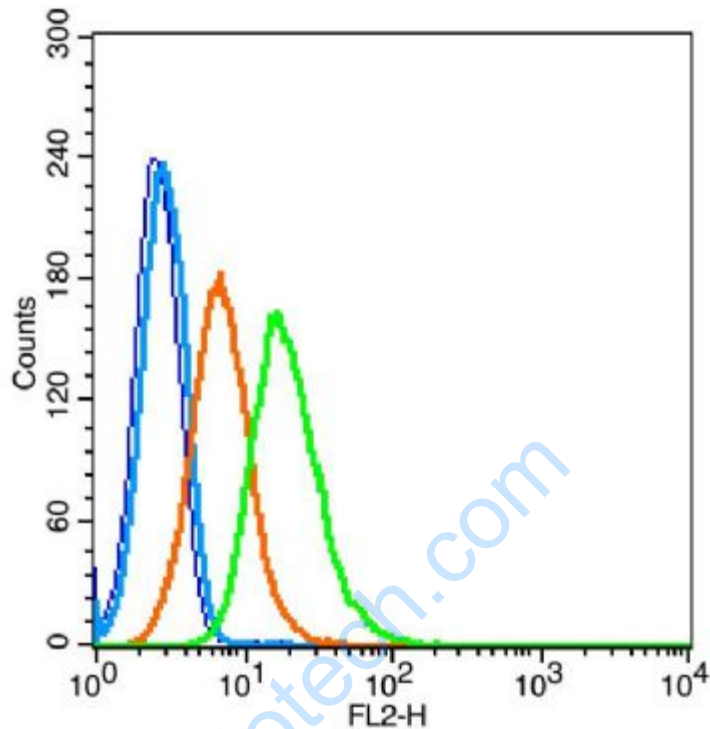
Secondary: IRDye800CW Goat Anti-Rabbit IgG at 1/20000 dilution

Predicted band size: 78 kD

Observed band size: 108 kD



Tissue/cell: rat brain tissue; 4% Paraformaldehyde-fixed and paraffin-embedded;
Antigen retrieval: citrate buffer (0.01M, pH 6.0), Boiling bathing for 15min; Block endogenous peroxidase by 3% Hydrogen peroxide for 30min; Blocking buffer (normal goat serum,C-0005) at 37°C for 20 min;
Incubation: Anti-IL1RAPL1 Polyclonal Antibody, Unconjugated(SL0445R) 1:200, overnight at 4°C, followed by conjugation to the secondary antibody(SP-0023) and DAB(C-0010) staining



Blank control: TM4 (blue).

Primary Antibody: Rabbit Anti-IL1RAPL1 antibody (SL0445R), Dilution: 1 μ g in 100 μ L 1X PBS containing 0.5% BSA;

Isotype Control Antibody: Rabbit IgG (orange), used under the same conditions.

Secondary Antibody: Goat anti-rabbit IgG-PE (white blue), Dilution: 1:200 in 1 X PBS containing 0.5% BSA.

Protocol

Primary antibody (SL0445R) were incubated for 30 min on the ice, followed by 1 X PBS containing 0.5% BSA + 1 0% goat serum (15 min) to block non-specific protein-protein interactions. Then the Goat Anti-rabbit IgG/PE antibody was added into the blocking buffer mentioned above to react with the primary antibody at 1/200

	dilution for 30 min on ice. Acquisition of 20,000 events was performed.
--	---

www.sunlongbiotech.com