



## Rabbit Anti-SLC1A5 antibody

SL0473R

|                               |  |
|-------------------------------|--|
| <b>Product Name:</b>          | SLC1A5   |
| <b>Chinese Name:</b>          | 溶质携带物家族-1抗体  |
| <b>Alias:</b>                 | SLC1A5; (glutamate transporter), member 7; R16; AAAT; ATBO; M7V1; RDRC; ASCT2; M7VS1; FLJ31068; Baboon M7 virus receptor; RD114/simian type D retrovirus receptor; Sodium-dependent neutral amino acid transporter type 2; Solute carrier family 1 member 5; Neutral amino acid transporter B(0); ATB(0); RD114/simian type D retrovirus receptor; Sodium-dependent neutral amino acid transporter type 2; AAAT HUMAN. |
| 文献引用<br>PubMed :              | <p><b>Specific References(1)</b>SL0473R has been referenced in 1 publications.</p> <p><b>[IF=1.78]</b>Huang, Fang, et al. "Upregulated SLC1A5 promotes cell growth and survival in colorectal cancer." International Journal of Clinical and Experimental Pathology 7.9 (2014): 6006.IHC-P;Human.</p> <p style="text-align: right;"><a href="#">PubMed:25337245</a></p>  |
| <b>Organism Species:</b>      | Rabbit   |
| <b>Clonality:</b>             | Polyclonal   |
| <b>React Species:</b>         | Human,   |
| <b>Applications:</b>          | ELISA=1:500-1000IHC-P=1:400-800Flow-Cyt=3ug/test (Paraffin sections need antigen repair)<br>not yet tested in other applications.<br>optimal dilutions/concentrations should be determined by the end user.  |
| <b>Molecular weight:</b>      | 56kDa  |
| <b>Cellular localization:</b> | The cell membrane  |
| <b>Form:</b>                  | Lyophilized or Liquid  |
| <b>Concentration:</b>         | 1mg/ml   |
| <b>immunogen:</b>             | KLH conjugated synthetic peptide derived from human SLC1A5:465-515/541   |
| <b>Lsotype:</b>               | IgG  |
| <b>Purification:</b>          | affinity purified by Protein A   |

|                        |  |
|------------------------|--|
| <b>Storage Buffer:</b> | 0.01M TBS(pH7.4) with 1% BSA, 0.03% Proclin300 and 50% Glycerol.   |
| <b>Storage:</b>        | Store at -20 °C for one year. Avoid repeated freeze/thaw cycles. The lyophilized antibody is stable at room temperature for at least one month and for greater than a year when kept at -20°C. When reconstituted in sterile pH 7.4 0.01M PBS or diluent of antibody the antibody is stable for at least two weeks at 2-4 °C.  |
| <b>PubMed:</b>         | <a href="#">PubMed</a>   |
| <b>Product Detail:</b> | <p>solute carrier family 1 (neutral amino acid transporter), member 5. mediates infections of RD114 feline endogenous virus, baboon endogenous virus and type D simian retroviruses; baboon M7 virus receptor; RD114 virus receptor; neutral amino acid transporter B.</p> <p><b>Function:</b><br/>Has a broad substrate specificity, a preference for zwitterionic amino acids, and a sodium-dependence. It accepts as substrates all neutral amino acids, including glutamine, asparagine, and branched-chain and aromatic amino acids, and excludes methylated amino acids, anionic amino acids, and cationic amino acids. Acts as a cell surface receptor for feline endogenous virus RD114, baboon M7 endogenous virus and type D simian retroviruses.</p> <p><b>Subcellular Location:</b><br/>Membrane; Multi-pass membrane protein (Probable). Melanosome. Note=Identified by mass spectrometry in melanosome fractions from stage I to stage IV.</p> <p><b>Tissue Specificity:</b><br/>Placenta, lung, skeletal muscle, kidney, pancreas, and intestine.</p> <p><b>Similarity:</b><br/>Belongs to the sodium:dicarboxylate (SDF) symporter (TC 2.A.23) family. SLC1A5 subfamily.</p> <p><b>SWISS:</b><br/>Q15758</p> <p><b>Gene ID:</b><br/>6510</p> <p><b>Database links:</b><br/><a href="#">Entrez Gene: 6510</a>Human<br/><a href="#">Entrez Gene: 20514</a>Mouse<br/><a href="#">Entrez Gene: 292657</a>Rat<br/><a href="#">Oimim: 109190</a>Human<br/><a href="#">SwissProt: Q15758</a>Human</p> |

[SwissProt: P51912](#)Mouse

[SwissProt: Q9Z1J7](#)Rat

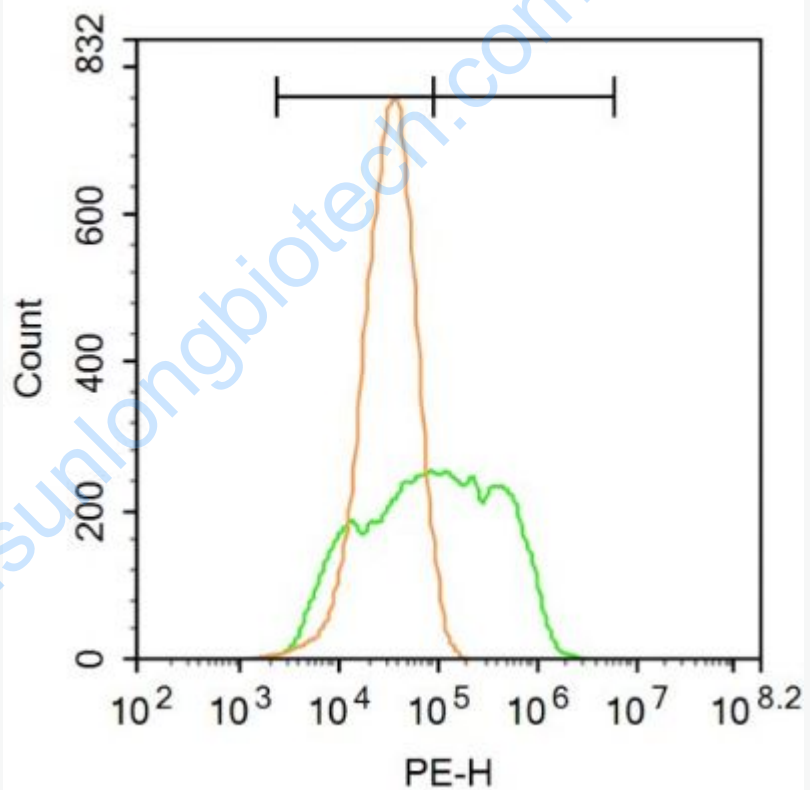
[Unigene: 631582](#)Human

[Unigene: 1056](#)Mouse

**Important Note:**

This product as supplied is intended for research use only, not for use in human, therapeutic or diagnostic applications.

Picture:



Blank control: A549.

Primary Antibody (green line): Rabbit Anti-SLC1A5 antibody (SL0473R)

Dilution:  $3\mu\text{g} / 10^6$  cells;

Isotype Control Antibody (orange line): Rabbit IgG .

Secondary Antibody : Goat anti-rabbit IgG-PE

Dilution: 1 $\mu$ g /test.

Protocol

The cells were incubated in 5%BSA to block non-specific protein-protein interactions for 30 min at room temperature .Cells stained with Primary Antibody for 30 min at room temperature. The secondary antibody used for 40 min at room temperature. Acquisition of 20,000 events was performed.

[www.sunlongbiotech.com](http://www.sunlongbiotech.com)