



## Rabbit Anti-SLC6A19 antibody

SL0478R

<b>Product Name:</b>	SLC6A19
<b>Chinese Name:</b>	钾依赖钠钙Exchange protein6抗体
<b>Alias:</b>	B(0)AT1; Sodium dependent neutral amino acid transporter B(0); Solute carrier family 6 member 19; System B(0) neutral amino acid transporter.
<b>Organism Species:</b>	Rabbit
<b>Clonality:</b>	Polyclonal
<b>React Species:</b>	Human,Mouse,Rat,Dog,Pig,Rabbit,
<b>Applications:</b>	ELISA=1:500-1000IHC-P=1:400-800IHC-F=1:400-800IF=1:100-500 (Paraffin sections need antigen repair) not yet tested in other applications. optimal dilutions/concentrations should be determined by the end user.
<b>Molecular weight:</b>	70kDa
<b>Cellular localization:</b>	The cell membrane
<b>Form:</b>	Lyophilized or Liquid
<b>Concentration:</b>	1mg/ml
<b>immunogen:</b>	KLH conjugated synthetic peptide derived from human SLC6A19:31-100/634<Cytoplasmic>
<b>Lsotype:</b>	IgG
<b>Purification:</b>	affinity purified by Protein A
<b>Storage Buffer:</b>	0.01M TBS(pH7.4) with 1% BSA, 0.03% Proclin300 and 50% Glycerol.
<b>Storage:</b>	Store at -20 °C for one year. Avoid repeated freeze/thaw cycles. The lyophilized antibody is stable at room temperature for at least one month and for greater than a year when kept at -20°C. When reconstituted in sterile pH 7.4 0.01M PBS or diluent of antibody the antibody is stable for at least two weeks at 2-4 °C.
<b>PubMed:</b>	<a href="#">PubMed</a>
<b>Product Detail:</b>	Transporter that mediates epithelial resorption of neutral amino acids across the apical membrane of epithelial cells in the kidney and intestine. It appears that leucine is the preferred substrate, but all large neutral non-aromatic L-amino acids bind to this transporter. Uptake of leucine is sodium-dependent. In contrast to other members of the neurotransmitter transporter family, does not appear to be chloride-dependent.

**Subcellular Location:**

Membrane; Multi-pass membrane protein (Probable).

**Tissue Specificity:**

Abundantly expressed in kidney, but not in intestine.

**Similarity:**

Belongs to the sodium:neurotransmitter symporter (SNF) (TC 2.A.22) family. SLC6A19 subfamily.

**SWISS:**

Q695T7

**Gene ID:**

340024

**Database links:**

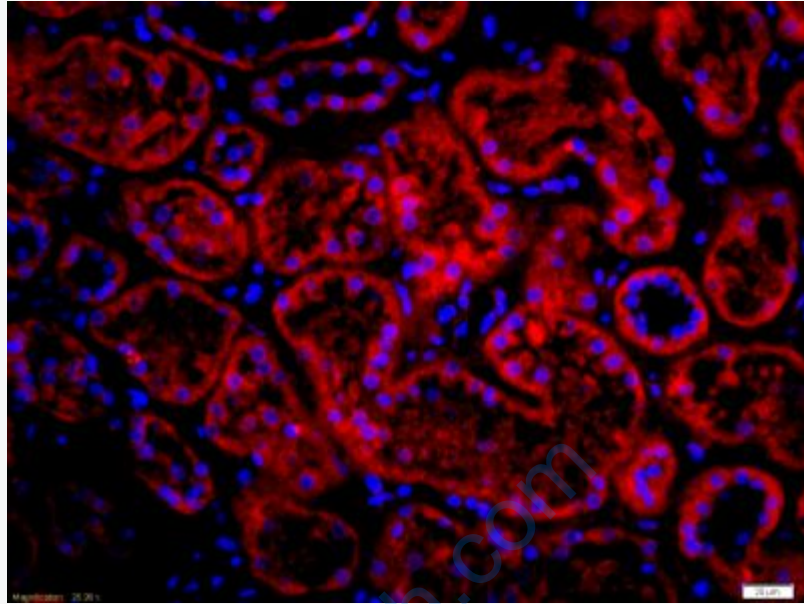
[Entrez Gene: 340024](#)Human

[SwissProt: Q695T7](#)Human

**Important Note:**

This product as supplied is intended for research use only, not for use in human, therapeutic or diagnostic applications.

主要用于:胰岛素瘤细胞与胰岛素分泌关系方面的研究, 主要在人主动脉endothelial cells中表达,并且受到葡萄糖的调控。



**Picture:**

Tissue/cell: human kidney tissue;4% Paraformaldehyde-fixed and paraffin-embedded;

Antigen retrieval: citrate buffer ( 0.01M, pH 6.0 ), Boiling bathing for 15min;

Blocking buffer (normal goat serum,C-0005) at 37°C for 20 min;

Incubation: Anti-SLC6A19 Polyclonal Antibody, Unconjugated(SL0478R) 1:200, overnight at 4°C; The secondary antibody was Goat Anti-Rabbit IgG, Cy3 conjugated(SL0478R)used at 1:200 dilution for 40 minutes at 37°C.

DAPI(5ug/ml,blue,C-0033) was used to stain the cell nuclei