



Rabbit Anti-EphA2 antibody

SL0485R

Product Name:	EphA2
Chinese Name:	endothelial cells受体蛋白酪氨酸激酶抗体
Alias:	ARCC2; Eck; Eph receptor A2 antibody EphA2; Ephrin receptor; Ephrin receptor EphA2; Ephrin type A receptor 2; Epithelial cell kinase; Epithelial cell receptor protein tyrosine kinase antibody Myk 2; Myk2; Sek 2; Sek2; Tyrosine protein kinase receptor ECK; Tyrosine-protein kinase receptor MPK-5; Tyrosine-protein kinase receptor SEK-2; EPHA2_HUMAN.
文献引用 PubMed :	<p>Specific References(1) SL0485R has been referenced in 1 publications.</p> <p>[IF=3.73]"Wu, Lun, et al. ""HIF-1α and HIF-2α: Siblings in Promoting Angiogenesis of Residual Hepatocellular Carcinoma after High-Intensity Focused Ultrasound Ablation."" PLOS ONE 9.2 (2014): e88913. "IHC-P;Mouse.</p> <p style="text-align: right;">PubMed:24551189</p>
Organism Species:	Rabbit
Clonality:	Polyclonal
React Species:	Human,Mouse,Rat,Dog,Cow,Monkey,
Applications:	WB=1:500-2000ELISA=1:500-1000IHC-P=1:400-800IHC-F=1:400-800 (Paraffin sections need antigen repair) not yet tested in other applications. optimal dilutions/concentrations should be determined by the end user.
Molecular weight:	105kDa
Cellular localization:	The cell membrane
Form:	Lyophilized or Liquid
Concentration:	1mg/ml
immunogen:	KLH conjugated synthetic peptide derived from human EphA2:901-976/976<Cytoplasmic>
Lsotype:	IgG
Purification:	affinity purified by Protein A

Storage Buffer:	0.01M TBS(pH7.4) with 1% BSA, 0.03% Proclin300 and 50% Glycerol.
Storage:	Store at -20 °C for one year. Avoid repeated freeze/thaw cycles. The lyophilized antibody is stable at room temperature for at least one month and for greater than a year when kept at -20°C. When reconstituted in sterile pH 7.4 0.01M PBS or diluent of antibody the antibody is stable for at least two weeks at 2-4 °C.
PubMed:	PubMed
Product Detail:	<p>This gene belongs to the ephrin receptor subfamily of the protein-tyrosine kinase family. EPH and EPH-related receptors have been implicated in mediating developmental events, particularly in the nervous system. Receptors in the EPH subfamily typically have a single kinase domain and an extracellular region containing a Cys-rich domain and 2 fibronectin type III repeats. The ephrin receptors are divided into 2 groups based on the similarity of their extracellular domain sequences and their affinities for binding ephrin-A and ephrin-B ligands. This gene encodes a protein that binds ephrin-A ligands. Mutations in this gene are the cause of certain genetically-related cataract disorders.[provided by RefSeq, May 2010].</p> <p>Function: Receptor tyrosine kinase which binds promiscuously membrane-bound ephrin-A family ligands residing on adjacent cells, leading to contact-dependent bidirectional signaling into neighboring cells. The signaling pathway downstream of the receptor is referred to as forward signaling while the signaling pathway downstream of the ephrin ligand is referred to as reverse signaling. Activated by the ligand ephrin-A1/EFNA1 regulates migration, integrin-mediated adhesion, proliferation and differentiation of cells. Regulates cell adhesion and differentiation through DSG1/desmoglein-1 and inhibition of the ERK1/ERK2 (MAPK3/MAPK1, respectively) signaling pathway. May also participate in UV radiation-induced apoptosis and have a ligand-independent stimulatory effect on chemotactic cell migration. During development, may function in distinctive aspects of pattern formation and subsequently in development of several fetal tissues. Involved for instance in angiogenesis, in early hindbrain development and epithelial proliferation and branching morphogenesis during mammary gland development. Engaged by the ligand ephrin-A5/EFNA5 may regulate lens fiber cells shape and interactions and be important for lens transparency development and maintenance. With ephrin-A2/EFNA2 may play a role in bone remodeling through regulation of osteoclastogenesis and osteoblastogenesis.</p> <p>Subunit: Homodimer. Interacts with SLA. Interacts (phosphorylated form) with VAV2, VAV3 and PI3-kinase p85 subunit (PIK3R1, PIK3R2 or PIK3R3); critical for the EFNA1-induced activation of RAC1 which stimulates cell migration. Interacts with ANKS1A. Interacts with INPPL1; regulates activated EPHA2 endocytosis and degradation. Interacts (inactivated form) with PTK2/FAK1 and interacts (EFNA1 ligand-activated form) with PTPN11; regulates integrin-mediated adhesion. Interacts with ARHGEF16, DOCK4 and ELMO2; mediates ligand-independent activation of RAC1 which stimulates cell migration. Interacts with CLDN4; phosphorylates CLDN4 and may regulate tight junctions. Interacts with ACP1.</p>

Subcellular Location:

Cell membrane; Single-pass type I membrane protein. Cell projection, ruffle membrane; Single-pass type I membrane protein. Cell projection, lamellipodium membrane; Single-pass type I membrane protein. Cell junction, focal adhesion. Note=Present at regions of cell-cell contacts but also at the leading edge of migrating cells.

Tissue Specificity:

Expressed in brain and glioma tissue and glioma cell lines (at protein level). Expressed most highly in tissues that contain a high proportion of epithelial cells, e.g., skin, intestine, lung, and ovary.

Post-translational modifications:

Autophosphorylates. Phosphorylated on tyrosine upon binding and activation by EFNA1. Phosphorylated residues Tyr-588 and Tyr-594 are required for binding VAV2 and VAV3 while phosphorylated residues Tyr-735 and Tyr-930 are required for binding PI3-kinase p85 subunit (PIK3R1, PIK3R2 or PIK3R3). These phosphorylated residues are critical for recruitment of VAV2 and VAV3 and PI3-kinase p85 subunit which transduce downstream signaling to activate RAC1 GTPase and cell migration.

Phosphorylated at Ser-897 by PKB; serum-induced phosphorylation which targets EPHA2 to the cell leading edge and stimulates cell migration. Phosphorylation by PKB is inhibited by EFNA1-activated EPHA2 which regulates PKB activity via a reciprocal regulatory loop. Dephosphorylated by ACP1.

Ubiquitinated by CHIP/STUB1. Ubiquitination is regulated by the HSP90 chaperone and regulates the receptor stability and activity through proteasomal degradation. ANKS1A prevents ubiquitination and degradation.

DISEASE:

Genetic variations in EPHA2 are the cause of susceptibility to cataract cortical age-related type 2 (ARCC2) [MIM:613020]. A developmental punctate opacity common in the cortex and present in most lenses. The cataract is white or cerulean, increases in number with age, but rarely affects vision.

Defects in EPHA2 are the cause of cataract posterior polar type 1 (CTPP1) [MIM:116600]. A subcapsular opacity, usually disk-shaped, located at the back of the lens. It can have a marked effect on visual acuity.

Note=Overexpressed in several cancer types and promotes malignancy.

Similarity:

Belongs to the protein kinase superfamily. Tyr protein kinase family. Ephrin receptor subfamily.

Contains 1 Eph LBD (Eph ligand-binding) domain.

Contains 2 fibronectin type-III domains.

Contains 1 protein kinase domain.

Contains 1 SAM (sterile alpha motif) domain.

SWISS:

P29317

Gene ID:
1969

Database links:

[Entrez Gene: 1969](#)Human

[Entrez Gene: 13836](#)Mouse

[Entrez Gene: 366492](#)Rat

[Oimim: 176946](#)Human

[SwissProt: P29317](#)Human

[SwissProt: Q03145](#)Mouse

[Unigene: 171596](#)Human

[Unigene: 2581](#)Mouse

[Unigene: 23415](#)Rat

Important Note:

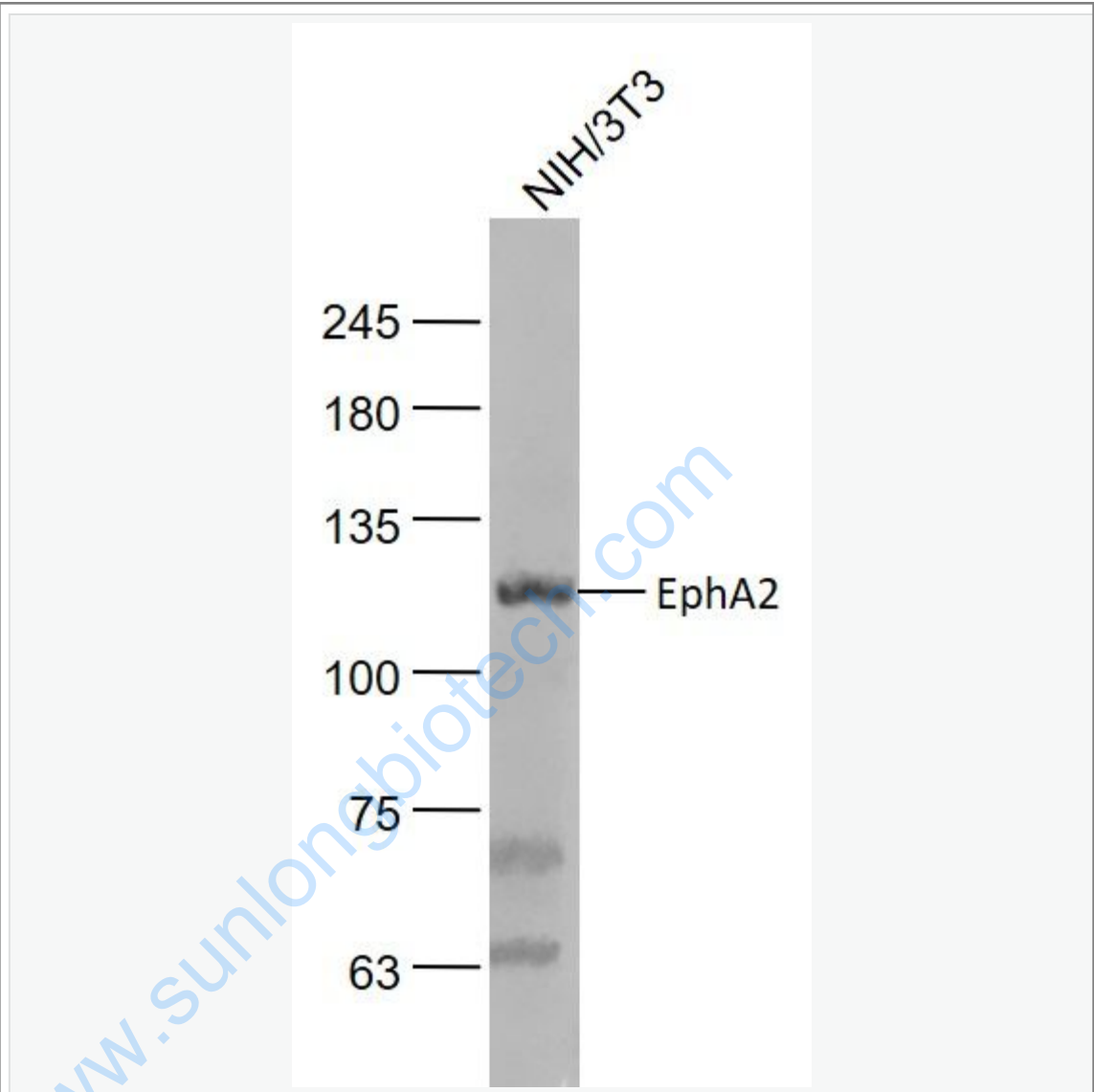
This product as supplied is intended for research use only, not for use in human, therapeutic or diagnostic applications.

Growth factors and hormones (Growth Factor and Hormones)

EphA2 (EphA2

Receptor) 酪氨酸蛋白激酶受体, ephrinA2受体广泛表达于上皮来源的细胞. 有研究发现, EphA2在乳腺癌、前列腺癌、肺癌和食道癌等恶性Tumour组织或细胞中为高表达

Picture:



Sample:

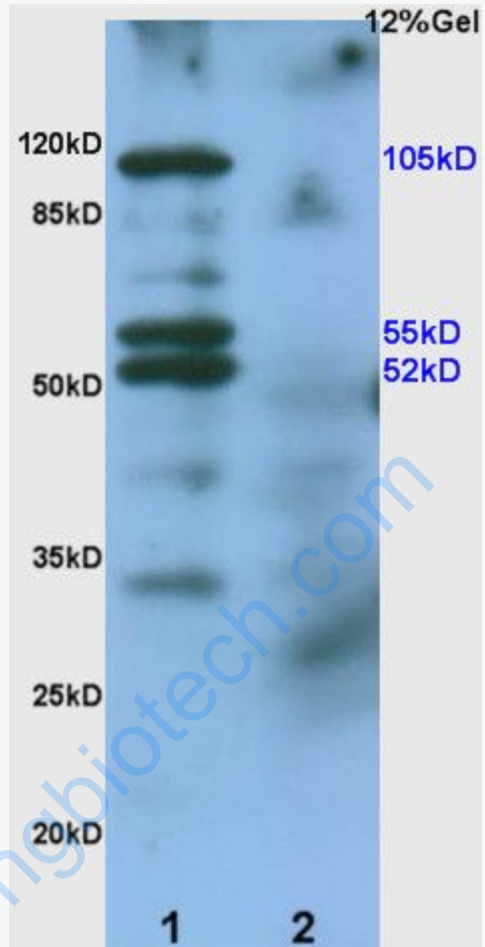
NIH/3T3(Mouse) Cell Lysate at 30 ug

Primary: Anti-EphA2 (SL0485R) at 1/1000 dilution

Secondary: IRDye800CW Goat Anti-Rabbit IgG at 1/20000 dilution

Predicted band size: 105 kD

Observed band size: 115 kD



Sample:

Human colon carcinoma lysates Lysate at 30 ug

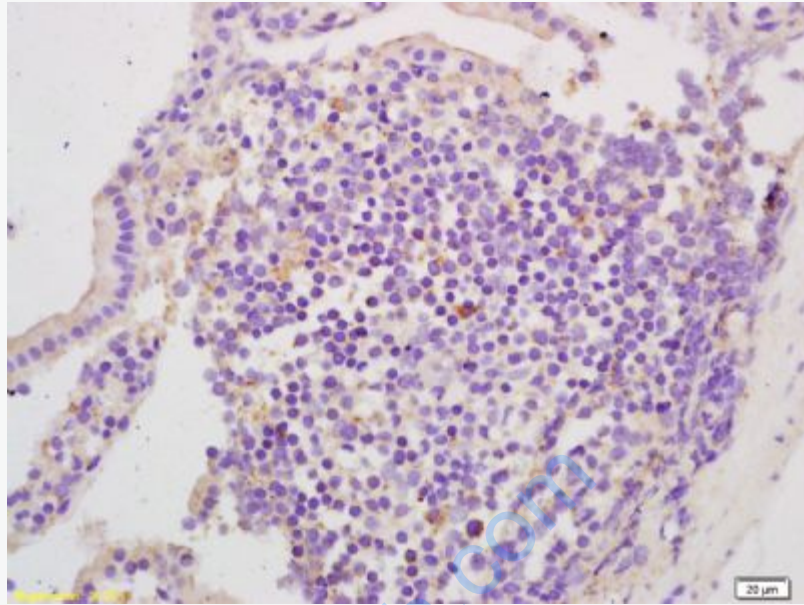
Intestine (Mouse) Lysate at 30 ug

Primary: Anti- EphA2/Eph receptor A2 (SL0485R) at 1/200 dilution

Secondary: HRP conjugated Goat-Anti-rabbit IgG (SL0485R) at 1/3000 dilution

Predicted band size : 105kD

Observed band size : 105kD, 52/55kD

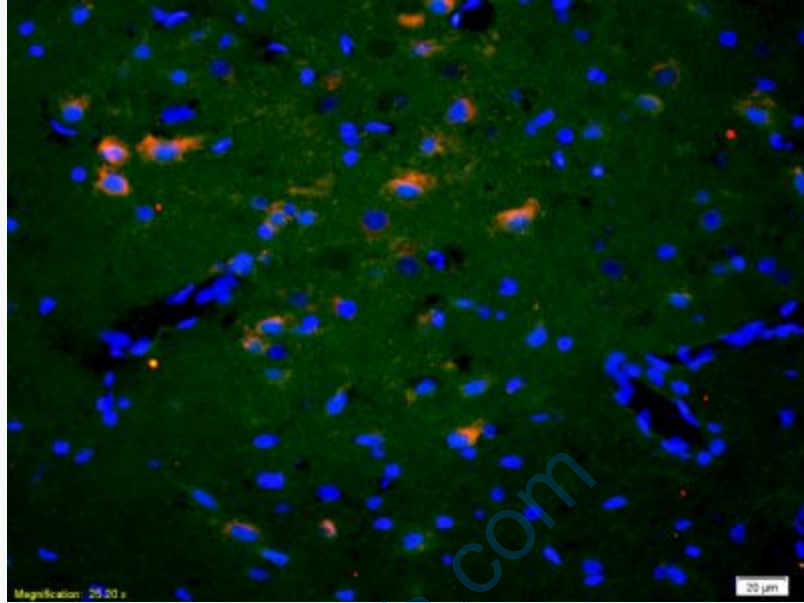


Tissue/cell: mouse intestine tissue; 4% Paraformaldehyde-fixed and paraffin-embedded;

Antigen retrieval: citrate buffer (0.01M, pH 6.0), Boiling bathing for 15min; Block endogenous peroxidase by 3% Hydrogen peroxide for 30min; Blocking buffer (normal goat serum,C-0005) at 37°C for 20 min;

Incubation: Anti-EphA2/Eph receptor A2 Polyclonal Antibody,

Unconjugated(SL0485R) 1:200, overnight at 4°C, followed by conjugation to the secondary antibody(SP-0023) and DAB(C-0010) staining



Tissue/cell: rat brain tissue;4% Paraformaldehyde-fixed and paraffin-embedded;
Antigen retrieval: citrate buffer (0.01M, pH 6.0), Boiling bathing for 15min;
Blocking buffer (normal goat serum,C-0005) at 37°C for 20 min;
Incubation: Anti-EphA2/Eph receptor A2 Polyclonal Antibody,
Unconjugated(SL0485R) 1:200, overnight at 4°C; The secondary antibody was Goat
Anti-Rabbit IgG, Cy3 conjugated (SL0485R)used at 1:200 dilution for 40 minutes at
37°C. DAPI(5ug/ml,blue,C-0033) was used to stain the cell nuclei