

Rabbit Anti-ADRB1 antibody

SL0498R

Product Name:	ADRB1
Chinese Name:	肾上腺素能受体β1抗体
Alias:	beta 1 Adrenergic Receptor; beta 1 Adrenergic Receptor; ADRB1R; Adrenergic beta 1 receptor; B1AR; Beta 1 adrenoceptor; Beta 1 adrenoceptor; Beta-1 adrenergic receptor; Beta-1 adrenoceptor; Beta-1 adrenoceptor; BETA1AR; RHR; ADR B1; ADRB 1; ADRB1; ADRB1_HUMAN; ADRB1R; Adrenergic beta 1 receptor; Adrenoceptor beta 1.
文献引用 PubMed :	<p>Specific References(2) SL0498R has been referenced in 2 publications.</p> <p>[IF=3.07]Deng, Guo-Hua, et al. "Exogenous norepinephrine attenuates the efficacy of sunitinib in a mouse cancer model." Journal of Experimental & Clinical Cancer Research 33:21 (2014).IHC-P;Mouse.</p> <p>PubMed:24555849</p> <p>[IF=2.71]Bornholz, Beatrice, et al. "A standardised FACS assay based on native, receptor transfected cells for the clinical diagnosis and monitoring of β1-adrenergic receptor autoantibodies in human heart disease." Clinical Chemistry and Laboratory Medicine (CCLM).Human.</p> <p>PubMed:26408610</p>
Organism Species:	Rabbit
Clonality:	Polyclonal
React Species:	Human,Mouse,Rat,Dog,Pig,
Applications:	WB=1:500-2000ELISA=1:500-1000IHC-P=1:400-800IHC-F=1:400-800ICC=1:100-500IF=1:100-500 (Paraffin sections need antigen repair) not yet tested in other applications. optimal dilutions/concentrations should be determined by the end user.
Molecular weight:	52kDa

Cellular localization:	The cell membrane
Form:	Lyophilized or Liquid
Concentration:	1mg/ml
immunogen:	KLH conjugated synthetic peptide derived from human ADRB1:181-250/477<Extracellular>
Lsotype:	IgG
Purification:	affinity purified by Protein A
Storage Buffer:	0.01M TBS(pH7.4) with 1% BSA, 0.03% Proclin300 and 50% Glycerol.
Storage:	Store at -20 °C for one year. Avoid repeated freeze/thaw cycles. The lyophilized antibody is stable at room temperature for at least one month and for greater than a year when kept at -20°C. When reconstituted in sterile pH 7.4 0.01M PBS or diluent of antibody the antibody is stable for at least two weeks at 2-4 °C.
PubMed:	PubMed
Product Detail:	<p>Beta-adrenergic receptors (Beta-1 adrenoreceptor) mediate the catecholamine-induced activation of adenylate cyclase through the action of G proteins. This receptor binds epinephrine and norepinephrine with approximately equal affinity. Subcellular location cell membrane; Multi-pass membrane protein. Homologous desensitization of the receptor is mediated by its phosphorylation by beta-adrenergic receptor kinase. Belongs to the G-protein coupled receptor 1 family.</p> <p>Function: Beta-adrenergic receptors mediate the catecholamine-induced activation of adenylate cyclase through the action of G proteins. This receptor binds epinephrine and norepinephrine with approximately equal affinity.</p> <p>Subunit: Interacts with GOPC, MAGI3 and DLG4.</p> <p>Subcellular Location: Cell membrane; Multi-pass membrane protein. Note=Localized at the plasma membrane. Found in the Golgi upon GOPC overexpression.</p> <p>Post-translational modifications: Homologous desensitization of the receptor is mediated by its phosphorylation by beta-adrenergic receptor kinase.</p> <p>Similarity: Belongs to the G-protein coupled receptor 1 family. Adrenergic receptor subfamily. ADRB1 sub-subfamily.</p> <p>SWISS: P08588</p> <p>Gene ID: 153</p>

Database links:

[Entrez Gene: 153](#)Human

[Entrez Gene: 11554](#)Mouse

[Entrez Gene: 24925](#)Rat

[Oimim: 109630](#)Human

[SwissProt: P08588](#)Human

[SwissProt: P34971](#)Mouse

[SwissProt: P18090](#)Rat

[Unigene: 99913](#)Human

[Unigene: 46797](#)Mouse

[Unigene: 87064](#)Rat

Important Note:

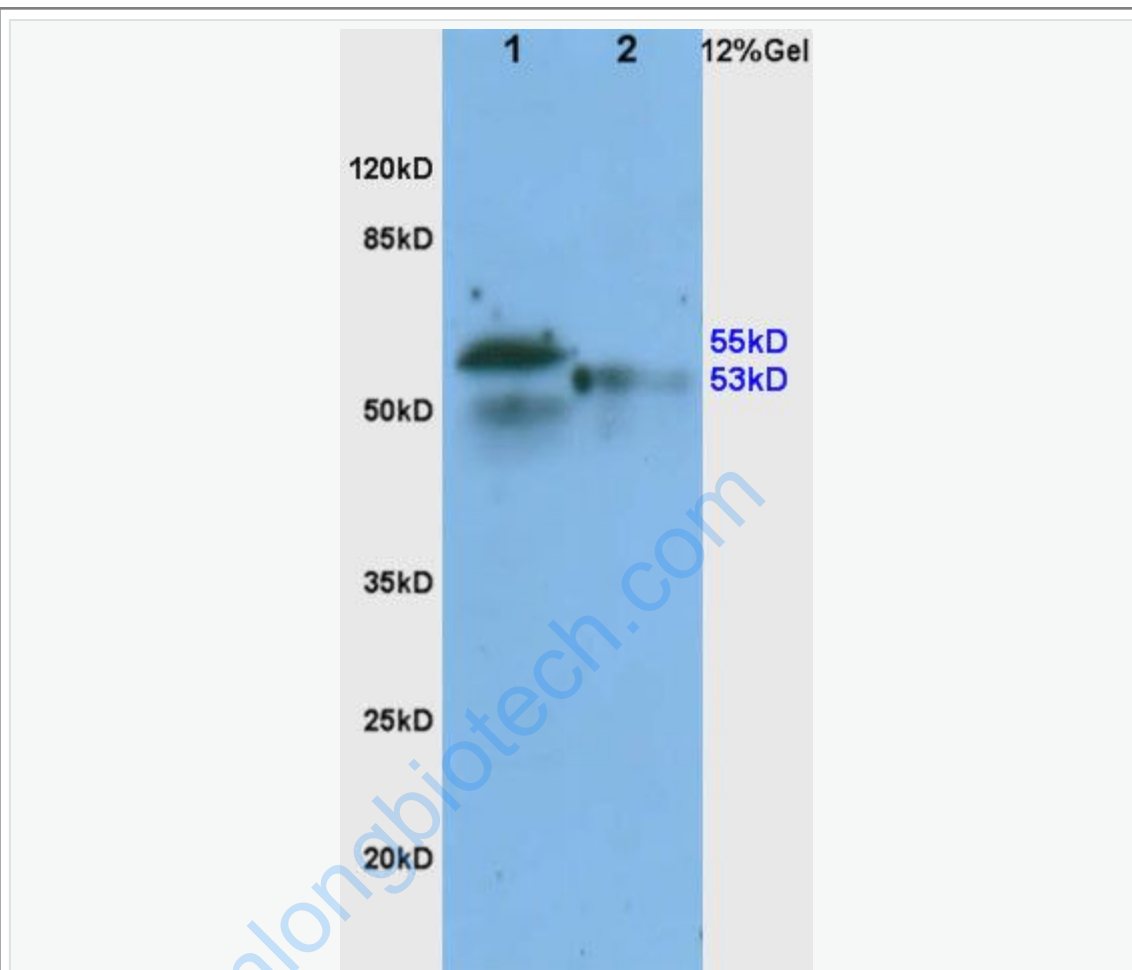
This product as supplied is intended for research use only, not for use in human, therapeutic or diagnostic applications.

β 1 肾上腺素能受体 (Beta-adrenergic Receptor-1

)在接受交感神经节后纤维支配的各种器官中存在着与肾上腺素、去甲肾上腺素起反应的受体,称为肾上腺素能受体。其化学性质尚不清楚。用对药物反应的方法,肾上腺素能受体可分为 α 及 β 两个类型。肾上腺素对 α 、 β 及D型受体均起作用,而去甲肾上腺素主要对 α 型起作用。

β 1AR所引起的反应为支气管扩张、血管扩张等,肾上腺素受体可被 β 13, 4-dichloroisoproterenol (D-CI)等阻断药物所抑制。

Picture:



Sample:

Heart (Mouse) Lysate at 30 ug

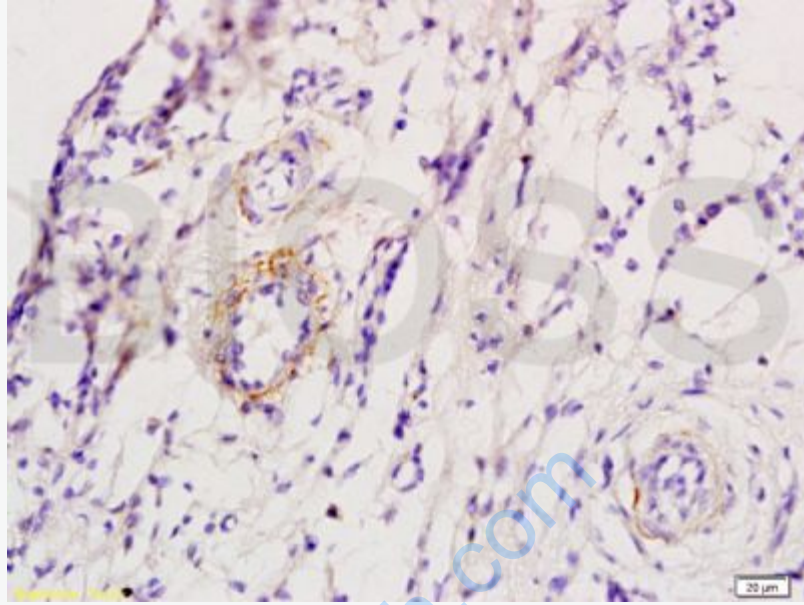
Heart (Rat) Lysate at 30 ug

Primary: Anti- ADRB1(SL0498R) at 1/200 dilution

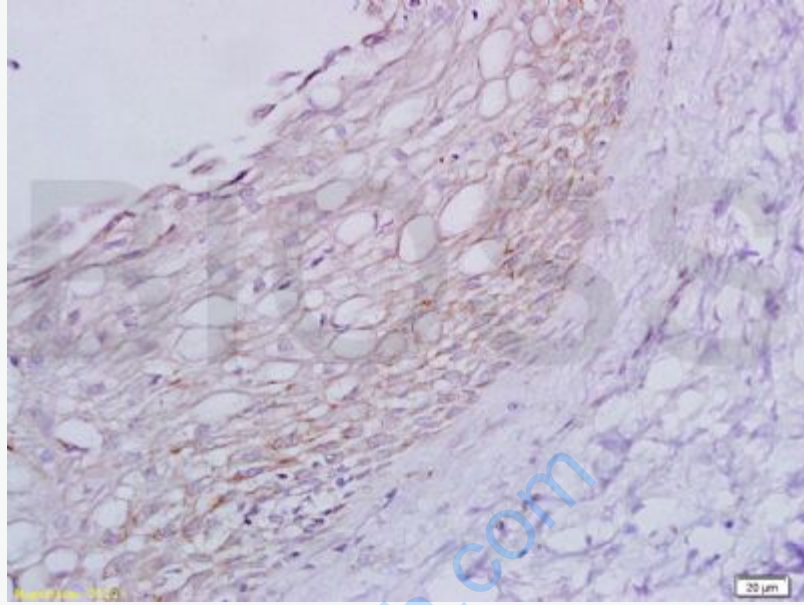
Secondary: HRP conjugated Goat-Anti-rabbit IgG (SL0498R) at 1/3000 dilution

Predicted band size: 52 kD

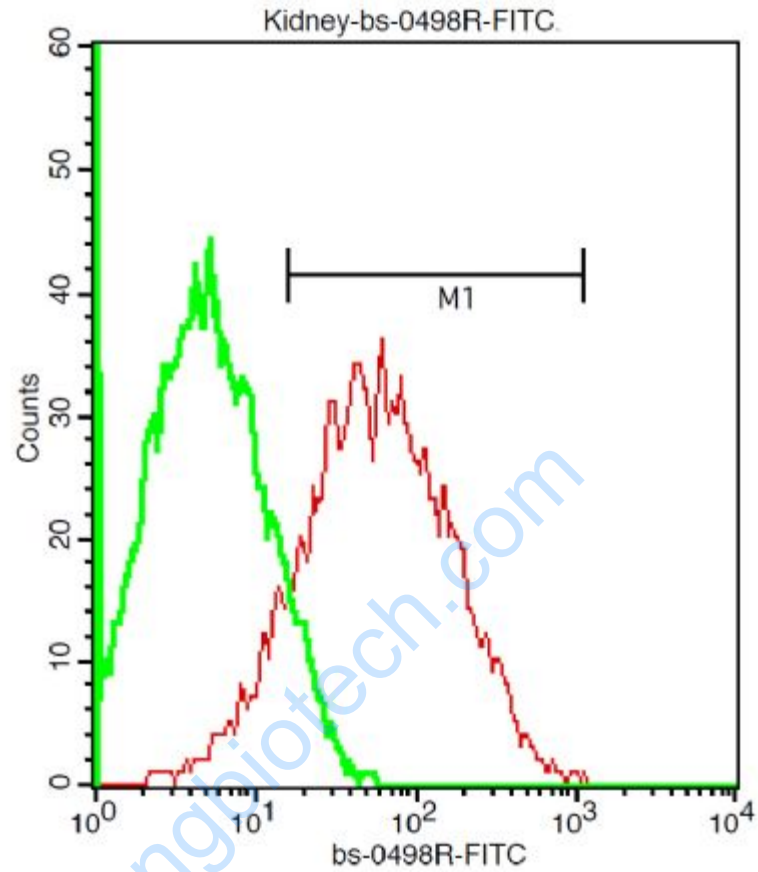
Observed band size: 55 kD



Tissue/cell: skin of rat foot; 4% Paraformaldehyde-fixed and paraffin-embedded;
Antigen retrieval: citrate buffer (0.01M, pH 6.0), Boiling bathing for 15min; Block endogenous peroxidase by 3% Hydrogen peroxide for 30min; Blocking buffer (normal goat serum,C-0005) at 37°C for 20 min;
Incubation: Anti-ADRB1 Polyclonal Antibody, Unconjugated(SL0498R) 1:200, overnight at 4°C, followed by conjugation to the secondary antibody(SP-0023) and DAB(C-0010) staining



Tissue/cell: rat ovary tissue; 4% Paraformaldehyde-fixed and paraffin-embedded;
Antigen retrieval: citrate buffer (0.01M, pH 6.0), Boiling bathing for 15min; Block endogenous peroxidase by 3% Hydrogen peroxide for 30min; Blocking buffer (normal goat serum,C-0005) at 37°C for 20 min;
Incubation: Anti-ADRB1 Polyclonal Antibody, Unconjugated(SL0498R) 1:200, overnight at 4°C, followed by conjugation to the secondary antibody(SP-0023) and DAB(C-0010) staining



Tissue/cell: mouse kidney cell;

Incubation:

Red line: Anti-ADRB1 Polyclonal Antibody, FITC conjugated(SL0498R) 1:200, 40 minutes at 37°C.

Green line: Isotype Control(SL0498R) 1:200, 40 minutes at 37°C.