



## Rabbit Anti-PRL antibody

SL0508R

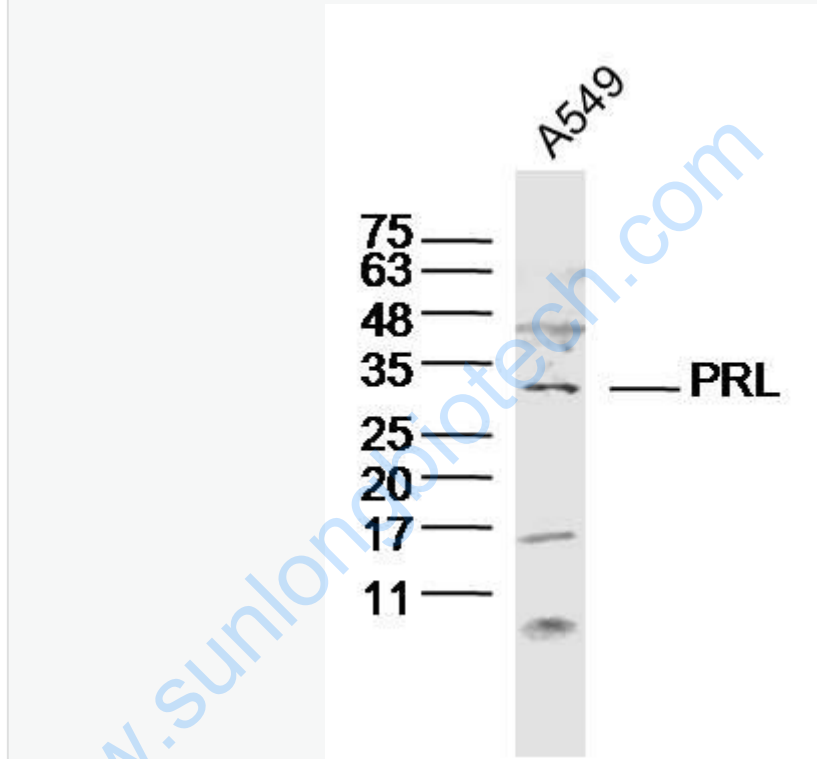
<b>Product Name:</b>	PRL
<b>Chinese Name:</b>	泌乳素抗体
<b>Alias:</b>	Luteotropic Hormone; Mamotropin; OTTHUMP00000017727; PRL; Prolactin; Prolactin precursor; PRL HUMAN.
<b>文献引用</b> PubMed :	<p><b>Specific References(2)</b> SL0508R has been referenced in 2 publications.</p> <p><b>[IF=3.32]</b>Hu, Bin, et al. "IFN<math>\gamma</math> Inhibits Osteopontin Expression in Human Decidual Stromal Cells and can be Attenuated by 1<math>\alpha</math>, 25<math>\text{-Dihydroxyvitamin D}_3</math>."rican Journal of Reproductive Immunology 68.4 (2012): 353-361..rch<b>Human</b>.  <a href="#">PubMed:22784028</a></p> <p><b>[IF=0.00]</b>Xu, Qian, et al. "CYCLIN G1 INHIBITS THE PROLIFERATION OF MOUSE ENDOMETRIAL STROMAL CELL IN DECIDUALIZATION."<b>IF(ICC);Mouse</b>.  <a href="#">PubMed:0</a></p>
<b>Organism Species:</b>	Rabbit
<b>Clonality:</b>	Polyclonal
<b>React Species:</b>	Human,Mouse,Rat,Chicken,Pig,Rabbit,Anser,
<b>Applications:</b>	WB=1:500-2000ELISA=1:500-1000IHC-P=1:400-800IHC-F=1:400-800IF=1:100-500 (Paraffin sections need antigen repair) not yet tested in other applications. optimal dilutions/concentrations should be determined by the end user.
<b>Molecular weight:</b>	24kDa
<b>Cellular localization:</b>	Secretory protein
<b>Form:</b>	Lyophilized or Liquid
<b>Concentration:</b>	1mg/ml
<b>immunogen:</b>	KLH conjugated synthetic peptide derived from human PRL:165-227/227

<b>Lsotype:</b>	IgG
<b>Purification:</b>	affinity purified by Protein A
<b>Storage Buffer:</b>	0.01M TBS(pH7.4) with 1% BSA, 0.03% Proclin300 and 50% Glycerol.
<b>Storage:</b>	Store at -20 °C for one year. Avoid repeated freeze/thaw cycles. The lyophilized antibody is stable at room temperature for at least one month and for greater than a year when kept at -20°C. When reconstituted in sterile pH 7.4 0.01M PBS or diluent of antibody the antibody is stable for at least two weeks at 2-4 °C.
<b>PubMed:</b>	<a href="#">PubMed</a>
<b>Product Detail:</b>	<p>This gene encodes the anterior pituitary hormone prolactin. This secreted hormone is a growth regulator for many tissues, including cells of the immune system. It may also play a role in cell survival by suppressing apoptosis, and it is essential for lactation. Alternative splicing results in multiple transcript variants that encode the same protein. [provided by RefSeq, Aug 2011].</p> <p><b>Function:</b> Prolactin acts primarily on the mammary gland by promoting lactation.</p> <p><b>Subcellular Location:</b> Secreted.</p> <p><b>Similarity:</b> Belongs to the somatotropin/prolactin family.</p> <p><b>SWISS:</b> P01236</p> <p><b>Gene ID:</b> 5617</p> <p><b>Database links:</b></p> <p><a href="#">Entrez Gene: 5617</a>Human</p> <p><a href="#">Entrez Gene: 19109</a>Mouse</p> <p><a href="#">Entrez Gene: 24683</a>Rat</p> <p><a href="#">Omim: 176760</a>Human</p> <p><a href="#">SwissProt: P01236</a>Human</p> <p><a href="#">SwissProt: P06879</a>Mouse</p> <p><a href="#">SwissProt: P01237</a>Rat</p>

**Important Note:**

This product as supplied is intended for research use only, not for use in human, therapeutic or diagnostic applications.

**Picture:**



Sample:

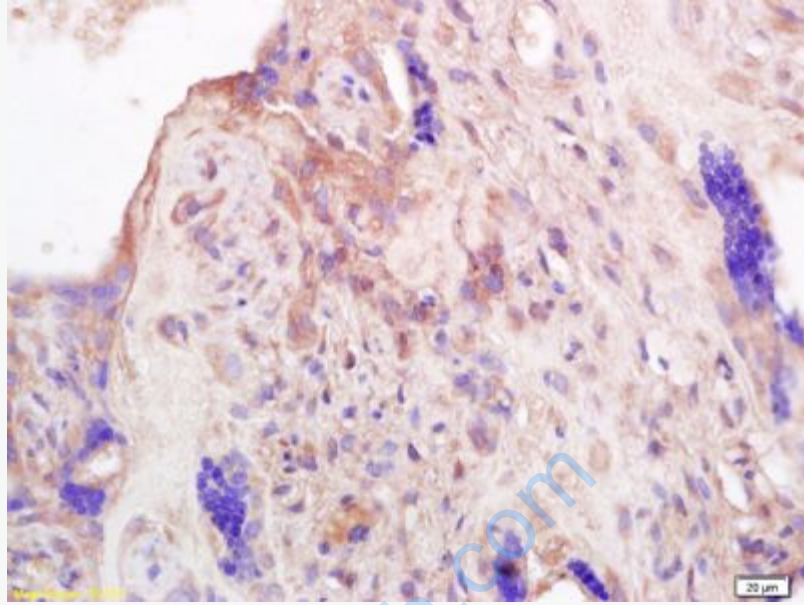
A549 cell(human) Lysate at 40 ug

Primary: Anti-PRL (SL0508R) at 1/300 dilution

Secondary: IRDye800CW Goat Anti-Rabbit IgG at 1/20000 dilution

Predicted band size: 24kD

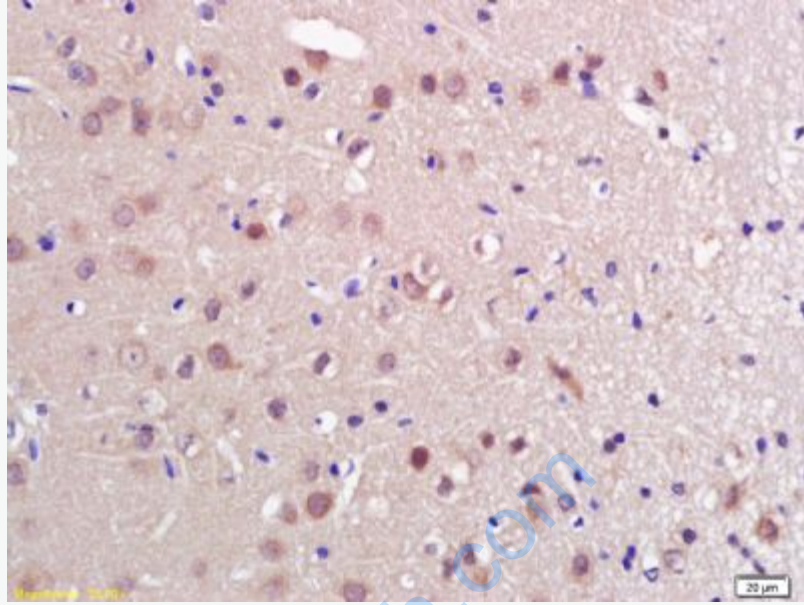
Observed band size: 30 kD



Tissue/cell: human placenta tissue; 4% Paraformaldehyde-fixed and paraffin-embedded;

Antigen retrieval: citrate buffer ( 0.01M, pH 6.0 ), Boiling bathing for 15min; Block endogenous peroxidase by 3% Hydrogen peroxide for 30min; Blocking buffer (normal goat serum,C-0005) at 37°C for 20 min;

Incubation: Anti-PRL Polyclonal Antibody, Unconjugated(SL0508R) 1:200, overnight at 4°C, followed by conjugation to the secondary antibody(SP-0023) and DAB(C-0010) staining



Tissue/cell: rat brain tissue; 4% Paraformaldehyde-fixed and paraffin-embedded;  
Antigen retrieval: citrate buffer ( 0.01M, pH 6.0 ), Boiling bathing for 15min; Block endogenous peroxidase by 3% Hydrogen peroxide for 30min; Blocking buffer (normal goat serum,C-0005) at 37°C for 20 min;  
Incubation: Anti-PRL Polyclonal Antibody, Unconjugated(SL0508R) 1:200, overnight at 4°C, followed by conjugation to the secondary antibody(SP-0023) and DAB(C-0010) staining