



Rabbit Anti-CD10 antibody

SL0527R

Product Name:	CD10
Chinese Name:	CD10抗体
Alias:	Atriopeptidase; CALLA; CD 10; CD10; Common acute lymphocytic leukemia antigen; DKFZp686O16152; EC 3.4.24.11; Enkephalinase; EPN; gp100; Membrane metallo endopeptidase; Membrane metalloendopeptidase; Membrane metalloendopeptidase neutral endopeptidase enkephalinase; Membrane metalloendopeptidase neutral endopeptidase enkephalinase CALLA CD10; Membrane metalloendopeptidase variant 1; Membrane metalloendopeptidase variant 2; MGC126681; MGC126707; MME; NEP; Neprilysin; Neutral endopeptidase 24.11; Neutral endopeptidase; NEP_HUMAN; Neprilysin; Skin fibroblast elastase; SFE.
Organism Species:	Rabbit
Clonality:	Polyclonal
React Species:	Human,Mouse,Rat,
Applications:	WB=1:500-2000ELISA=1:500-1000IHC-P=1:400-800IHC-F=1:400-800Flow-Cyt=3μg/testICC=1:100-500IF=1:100-500 (Paraffin sections need antigen repair) not yet tested in other applications. optimal dilutions/concentrations should be determined by the end user.
Molecular weight:	82kDa
Cellular localization:	The cell membrane
Form:	Lyophilized or Liquid
Concentration:	1mg/ml
immunogen:	KLH conjugated synthetic peptide derived from human CD10:601-600/750<Extracellular>
Lsotype:	IgG
Purification:	affinity purified by Protein A
Storage Buffer:	0.01M TBS(pH7.4) with 1% BSA, 0.03% Proclin300 and 50% Glycerol.
Storage:	Store at -20 °C for one year. Avoid repeated freeze/thaw cycles. The lyophilized antibody is stable at room temperature for at least one month and for greater than a year when kept at -20°C. When reconstituted in sterile pH 7.4 0.01M PBS or diluent of antibody the antibody is stable for at least two weeks at 2-4 °C.

PubMed:[PubMed](#)

This gene encodes a common acute lymphocytic leukemia antigen that is an important cell surface marker in the diagnosis of human acute lymphocytic leukemia (ALL). This protein is present on leukemic cells of pre-B phenotype, which represent 85% of cases of ALL. This protein is not restricted to leukemic cells, however, and is found on a variety of normal tissues. It is a glycoprotein that is particularly abundant in kidney, where it is present on the brush border of proximal tubules and on glomerular epithelium. The protein is a neutral endopeptidase that cleaves peptides at the amino side of hydrophobic residues and inactivates several peptide hormones including glucagon, enkephalins, substance P, neurotensin, oxytocin, and bradykinin. This gene, which encodes a 100-kD type II transmembrane glycoprotein, exists in a single copy of greater than 45 kb. The 5' untranslated region of this gene is alternatively spliced, resulting in four separate mRNA transcripts. The coding region is not affected by alternative splicing.

Function:

Thermolysin-like specificity, but is almost confined on acting on polypeptides of up to 30 amino acids. Biologically important in the destruction of opioid peptides such as Met- and Leu-enkephalins by cleavage of a Gly-Phe bond. Able to cleave angiotensin-1, angiotensin-2 and angiotensin 1-9. Involved in the degradation of atrial natriuretic factor (ANF). Displays UV-inducible elastase activity toward skin preelastic and elastic fibers.

Subcellular Location:

Cell membrane; Single-pass type II membrane protein.

Post-translational modifications:

Myristoylation is a determinant of membrane targeting.

Glycosylation at Asn-628 is necessary both for surface expression and neutral endopeptidase activity.

Similarity:

Belongs to the peptidase M13 family.

SWISS:

P08473

Gene ID:

4311

Database links:

[Entrez Gene: 4311](#)Human

[Entrez Gene: 17380](#)Mouse

[Entrez Gene: 24590](#)Rat

Product Detail:

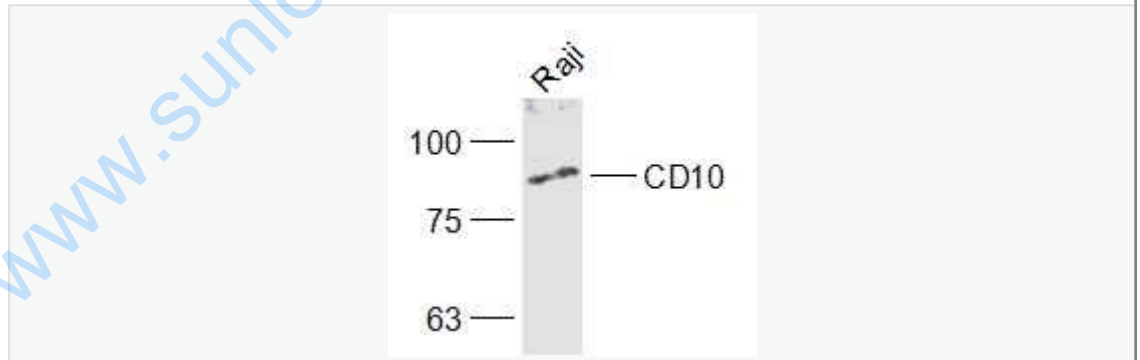
[Omim: 120520](#)Human
[SwissProt: P08473](#)Human
[SwissProt: Q61391](#)Mouse
[SwissProt: P07861](#)Rat
[Unigene: 307734](#)Human
[Unigene: 296022](#)Mouse
[Unigene: 33598](#)Rat

Important Note:

This product as supplied is intended for research use only, not for use in human, therapeutic or diagnostic applications.

CD10即共同型急性lymphocyte白血病抗原,是II型跨膜glycoprotein.CD10表达于早期Blymphocyte,某些粒性白细胞,骨髓基质细胞,部分上皮组织及其起源的Tumour细胞中也有表达.主要应用于某些恶性淋巴瘤和白血病的分型.CD10是一种94kD的锌依赖性The cell membrane金属Binding protein,参与细胞神经肽和激素肽的后分泌过程。它广泛地分布于肾、肝、小肠、胎盘、脉络膜丛、脑腺、腺皮质和白细胞,CD10是生发中心细胞及所致淋巴瘤的Marker。

Picture:



Sample:

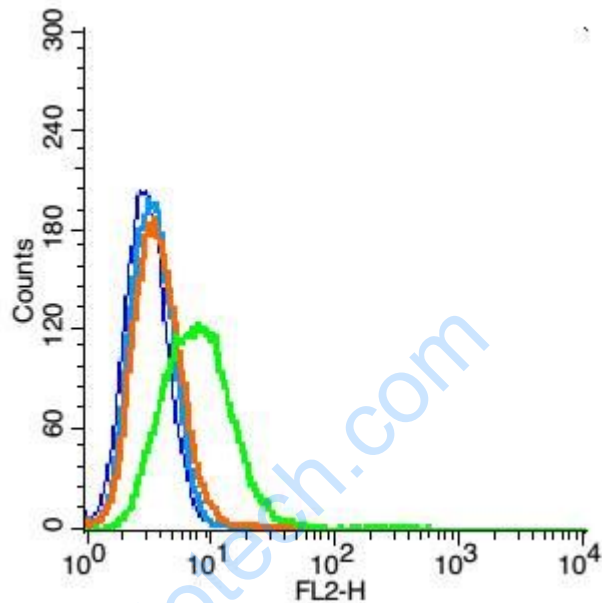
Raji(Human) Cell Lysate at 30 ug

Primary: Anti-CD10 (SL0527R) at 1/1000 dilution

Secondary: IRDye800CW Goat Anti-Rabbit IgG at 1/20000 dilution

Predicted band size: 82 kD

Observed band size: 82 kD



Blank control: A549 (blue).

Primary Antibody: Rabbit Anti- CD10 antibody(SL0527R), Dilution: 3 μ g in 100 μ L
1X PBS containing 0.5% BSA;

Isotype Control Antibody: Rabbit IgG(orange) ,used under the same conditions);

Secondary Antibody: Goat anti-rabbit IgG-PE(white blue), Dilution: 1:200 in 1 X
PBS containing 0.5% BSA.

Protocol

The cells were fixed with 2% paraformaldehyde (10 min) . Primary antibody (SL0527R) were incubated for 30 min on the ice, followed by 1 X PBS containing 0.5% BSA + 1 0% goat serum (15 min) to block non-specific protein-protein interactions. Then the Goat Anti-rabbit IgG/PE antibody was added into the blocking buffer mentioned above to react with the primary antibody at 1/200

	dilution for 30 min on ice. Acquisition of 20,000 events was performed.
--	---

www.sunlongbiotech.com