



Rabbit Anti-ANGPTL2 antibody

SL0537R

Product Name:	ANGPTL2
Chinese Name:	血管生成素样蛋白2抗体
Alias:	ANGPTL2; Angiopoietin like 2; Angiopoietin related protein 2; Angiopoietin-like protein 2; Angiopoietin-related protein 2; ANGL2_HUMAN; Angptl2; ANGL2; Arp2; HARP; MGC8889.
Organism Species:	Rabbit
Clonality:	Polyclonal
React Species:	Human,Mouse,Rat,Chicken,Dog,Pig,Cow,Horse,Rabbit,
Applications:	WB=1:500-2000ELISA=1:500-1000IHC-P=1:400-800IHC-F=1:400-800IF=1:100-500 (Paraffin sections need antigen repair) not yet tested in other applications. optimal dilutions/concentrations should be determined by the end user.
Molecular weight:	55kDa
Cellular localization:	Secretory protein
Form:	Lyophilized or Liquid
Concentration:	1mg/ml
immunogen:	KLH conjugated synthetic peptide derived from human ANGPTL2:401-493/493
Lsotype:	IgG
Purification:	affinity purified by Protein A
Storage Buffer:	0.01M TBS(pH7.4) with 1% BSA, 0.03% Proclin300 and 50% Glycerol.
Storage:	Store at -20 °C for one year. Avoid repeated freeze/thaw cycles. The lyophilized antibody is stable at room temperature for at least one month and for greater than a year when kept at -20°C. When reconstituted in sterile pH 7.4 0.01M PBS or diluent of antibody the antibody is stable for at least two weeks at 2-4 °C.
PubMed:	PubMed
Product Detail:	ANGPTL2/ANG-2 (Angiopoietin-like Protein 2) Induces sprouting in endothelial cells through an autocrine and paracrine action. [Subcellular location] Secreted. [Tissue specificity] Widely expressed in heart, small intestine, spleen and stomach. Also found in lower levels in colon, ovary, adrenal gland, skeletal muscle and in prostate. [PTM] N-glycosylated. [Similarity] Contains 1 fibrinogen C-terminal domain. ANGPTL2/ANG-2

(Angiopoietin-like Protein 2).

Function:

Induces sprouting in endothelial cells through an autocrine and paracrine action.

Subcellular Location:

Secreted.

Tissue Specificity:

Widely expressed in heart, small intestine, spleen and stomach. Also found in lower levels in colon, ovary, adrenal gland, skeletal muscle and in prostate.

Similarity:

Contains 1 fibrinogen C-terminal domain.

SWISS:

Q9UKU9

Gene ID:

23452

Database links:

[Entrez Gene: 23452](#)Human

[Entrez Gene: 26360](#)Mouse

[Entrez Gene: 171100](#)Rat

[Omim: 605001](#)Human

[SwissProt: Q9UKU9](#)Human

[SwissProt: Q9R045](#)Mouse

[Unigene: 653262](#)Human

[Unigene: 208919](#)Mouse

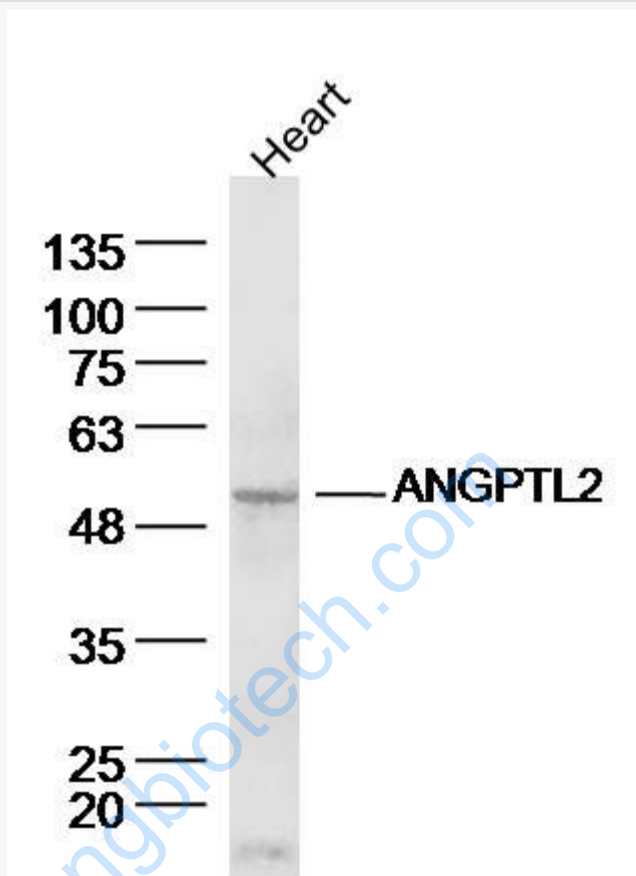
[Unigene: 162660](#)Rat

Important Note:

This product as supplied is intended for research use only, not for use in human, therapeutic or diagnostic applications.

Ang1/2与血管生成关系最为密切,目前有关该家族成员在Tumour血管生成中的研究正日益增多。近年来也用于Diabetes导致的血管损伤研究也是热门课题。

Picture:



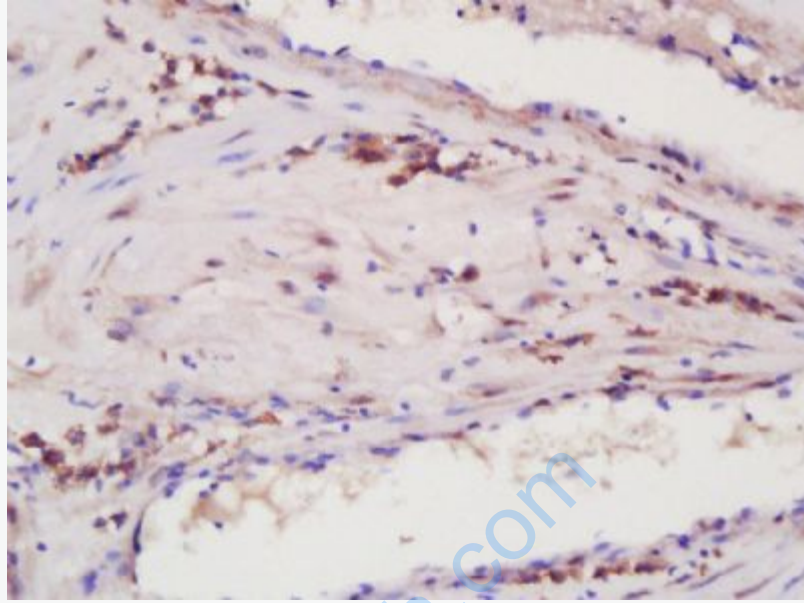
Sample: Heart (Mouse) Lysate at 40 ug

Primary: Anti-ANGPTL2 (SL0537R) at 1/300 dilution

Secondary: IRDye800CW Goat Anti-Rabbit IgG at 1/20000 dilution

Predicted band size: 55 kD

Observed band size: 55 kD



Paraformaldehyde-fixed, paraffin embedded (Human uterine muscle); Antigen retrieval by boiling in sodium citrate buffer (pH6.0) for 15min; Block endogenous peroxidase by 3% hydrogen peroxide for 20 minutes; Blocking buffer (normal goat serum) at 37°C for 30min; Antibody incubation with (Angptl2) Polyclonal Antibody, Unconjugated (SL0537R) at 1:200 overnight at 4°C, followed by operating according to SP Kit(Rabbit) (sp-0023) instructions and DAB staining.