




Rabbit Anti-SCF antibody

SL0545R

Product Name:	SCF
Chinese Name:	Stem cells生长因子抗体
Alias:	Stem Cell Factor; C kit ligand; Ckit ligand; DKFZp686F2250; KIT ligand; Kitl; KITLG; KL 1; KL1; Mast cell growth factor; MGF; SF; SHEP7; Steel factor; Stem cell factor precursor; SCF_HUMAN.
文献引用 	<p>Specific References(3) SL0545R has been referenced in 3 publications.</p> <p>[IF=3.66]Goldstein, Bradley J., et al. "Adult c-Kit (+) progenitor cells are necessary for maintenance and regeneration of olfactory neurons." Journal of Comparative Neurology (2014).IHC-F;Mouse. PubMed:25044230</p> <p>[IF=3.61]Wang, Li, et al. "Silencing stem cell factor attenuates stemness and inhibits migration of cancer stem cells derived from Lewis lung carcinoma cells."Tumor Biology (2015): 1-15.WB;Mouse. PubMed:26666817</p> <p>[IF=3.23]Lin, Xue-Lian, et al. "NPs/NPRs Signaling Pathways May Be Involved in Depression-Induced Loss of Gastric ICC by Decreasing the Production of mSCF." PloS one 11.2 (2016): e0149031.WB;Rat. PubMed:26862759</p>
Organism Species:	Rabbit
Clonality:	Polyclonal
React Species:	Human,Mouse,Rat,
Applications:	WB=1:500-2000ELISA=1:500-1000IHC-P=1:400-800IHC-F=1:400-800Flow-Cyt=1ug/TestIF=1:100-500 (Paraffin sections need antigen repair) not yet tested in other applications.

	optimal dilutions/concentrations should be determined by the end user.
Molecular weight:	31kDa
Cellular localization:	cytoplasmicThe cell membraneSecretory protein
Form:	Lyophilized or Liquid
Concentration:	1mg/ml
immunogen:	KLH conjugated synthetic peptide derived from human SCF:
Lsotype:	IgG
Purification:	affinity purified by Protein A
Storage Buffer:	0.01M TBS(pH7.4) with 1% BSA, 0.03% Proclin300 and 50% Glycerol.
Storage:	Store at -20 °C for one year. Avoid repeated freeze/thaw cycles. The lyophilized antibody is stable at room temperature for at least one month and for greater than a year when kept at -20°C. When reconstituted in sterile pH 7.4 0.01M PBS or diluent of antibody the antibody is stable for at least two weeks at 2-4 °C.
PubMed:	PubMed
Product Detail:	<p>Stem Cell Factor (SCF), also known as c-Kit ligand (KL), steel factor (SLF) and mast cell growth factor (MGF), is a 30 kDa glycoprotein with broad activities on various tissues, including hematopoietic cells, pigment cells, and primordial germ cells. SCF is secreted by endothelial cells, fibroblasts, and bone marrow stromal cells as a membrane-bound form which may be cleaved to release the soluble form. Both forms are active in promoting colony formation from murine bone marrow cells, but membrane-bound SCF is more effective in promoting hematopoieses in vivo, suggesting a role in cellular interactions between hematopoietic and stromal cells. The soluble form is thought to exist in solution as a noncovalently linked dimer. SCF is structurally related to M-CSF (CSF-1) and Flt-3/Flk-2 Ligand (FL) with all three sharing a similar size, existence of transmembrane and soluble forms, four conserved cysteines, and alternative splicing exon locations, but they share little sequence homology. SCF alone is a modest colony stimulating factor. However, in the presence of other cytokines such as EPO, TPO, GM-CSF, G-CSF, M-CSF, IL-3, and IL-7, SCF is a potent costimulant that works synergistically to increase the size of myeloid, erythroid or lymphoid lineage colonies without influencing the lineage differentiation of the progenitors.</p> <p>Subunit: Homodimer, non-covalently linked (Probable). Heterotetramer with KIT, binding two KIT molecules; thereby mediates KIT dimerization and subsequent activation by autophosphorylation.</p> <p>Subcellular Location: Isoform 1: Cell membrane; Single-pass type I membrane protein. Isoform 2: Cell membrane; Single-pass type I membrane protein. Cytoplasm, cytoskeleton. Soluble KIT ligand: Secreted.</p> <p>Similarity: Belongs to the SCF family.</p> <p>SWISS: P21583</p>

Gene ID:
4254

Database links:

[Entrez Gene: 4254](#)Human

[Omin: 184745](#)Human

[SwissProt: P21583](#)Human

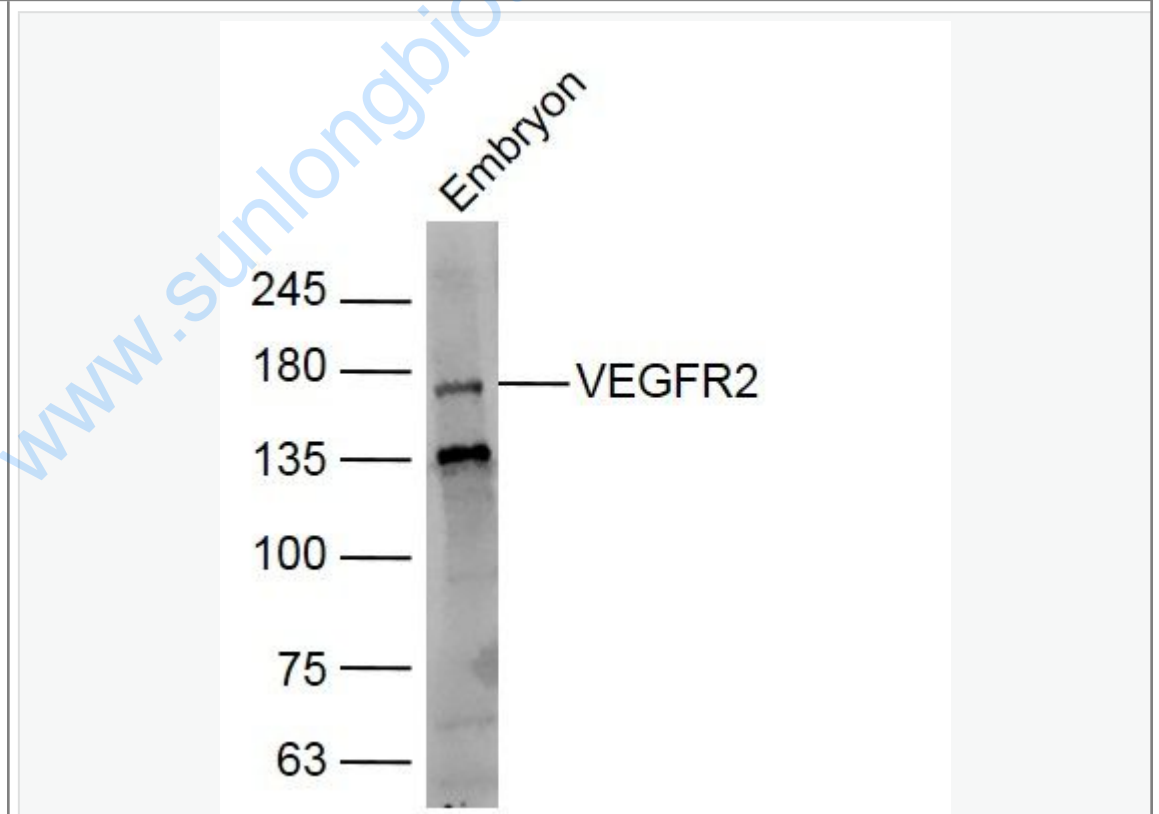
[Unigene: 1048](#)Human

Important Note:

This product as supplied is intended for research use only, not for use in human, therapeutic or diagnostic applications.

Stem Cell Factor(SCF,又称Kit ligand=KITLG)—Stem cells生长因子。是c-kit的配体。有膜结合型和可溶型两种存在形式。具有多向性的促生长作用。

Picture:



Sample:

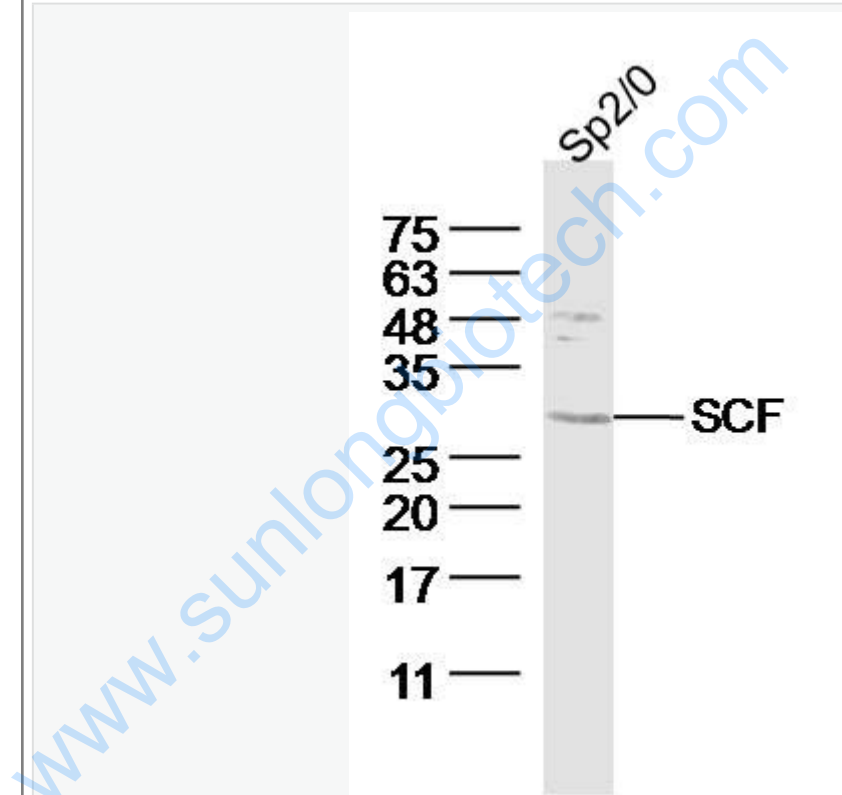
Embryon (Mouse)Lysate at 30 ug

Primary: Anti-VEGFR2 (SL0545R) at 1/300 dilution

Secondary: IRDye800CW Goat Anti-Rabbit IgG at 1/20000 dilution

Predicted band size: 147 kD

Observed band size: 177kD



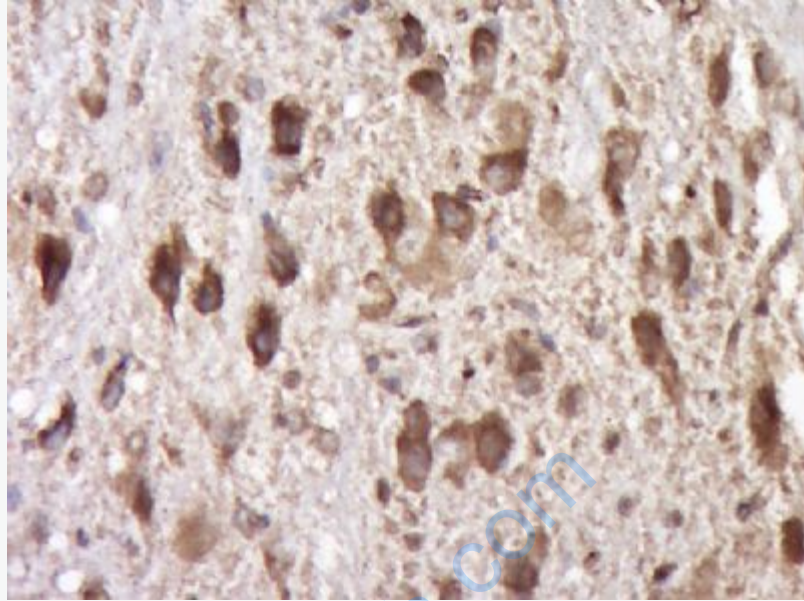
Sample: SP2/0 Cell (Mouse) Lysate at 40 ug

Primary: Anti- SCF (SL0545R) at 1/300 dilution

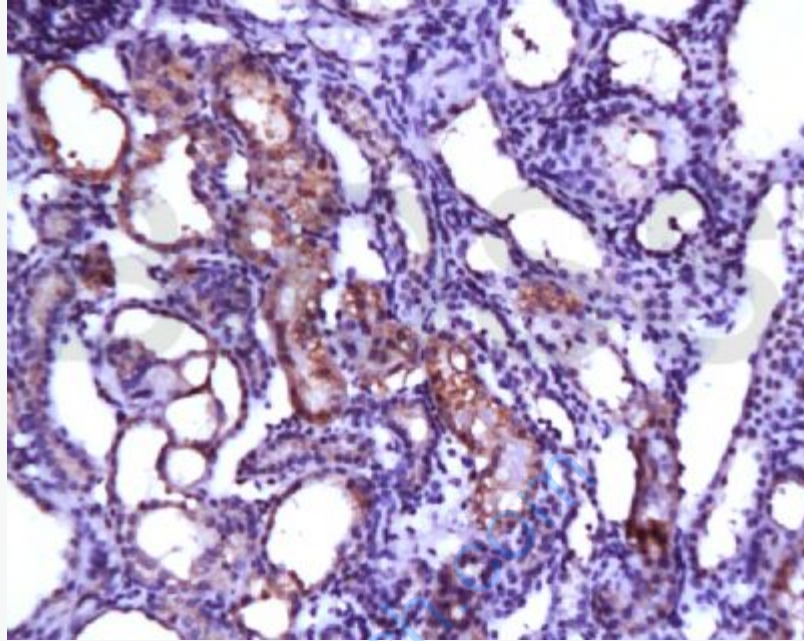
Secondary: IRDye800CW Goat Anti-Rabbit IgG at 1/20000 dilution

Predicted band size: 31 kD

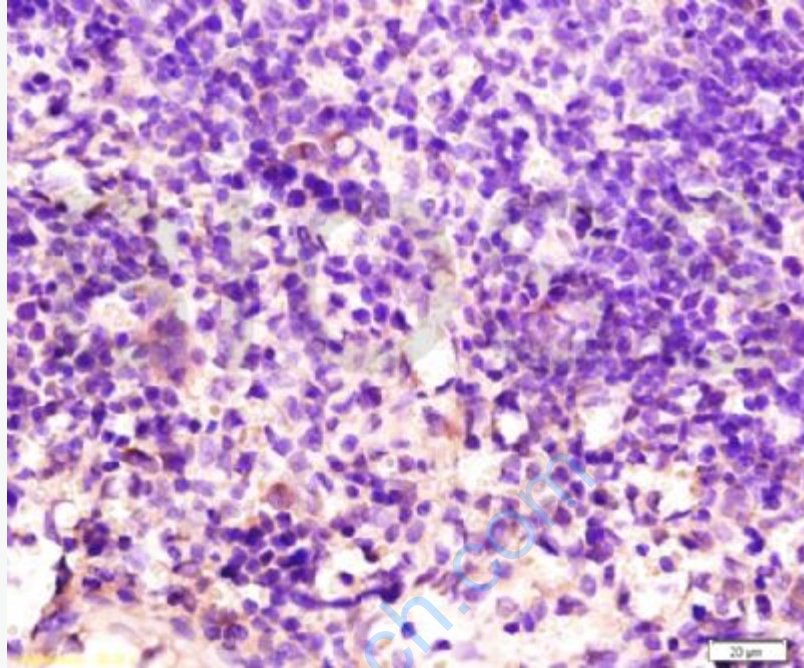
Observed band size: 31 kD



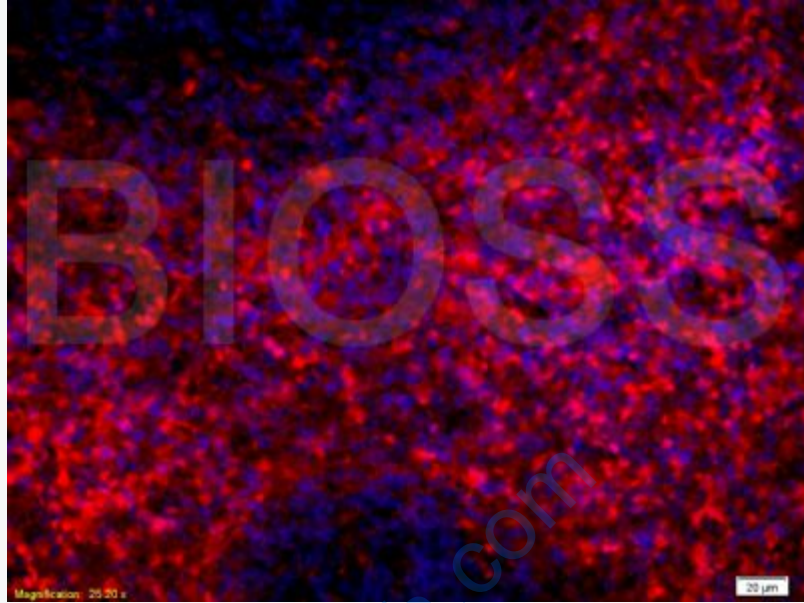
Paraformaldehyde-fixed, paraffin embedded (Rat brain); Antigen retrieval by boiling in sodium citrate buffer (pH6.0) for 15min; Block endogenous peroxidase by 3% hydrogen peroxide for 20 minutes; Blocking buffer (normal goat serum) at 37°C for 30min; Antibody incubation with (SCF) Polyclonal Antibody, Unconjugated (SL0545R) at 1:400 overnight at 4°C, followed by operating according to SP Kit(Rabbit) (sp-0023) instructions and DAB staining.



Tissue/cell: rat kidney tissue; 4% Paraformaldehyde-fixed and paraffin-embedded;
Antigen retrieval: citrate buffer (0.01M, pH 6.0), Boiling bathing for 15min; Block endogenous peroxidase by 3% Hydrogen peroxide for 30min; Blocking buffer (normal goat serum,C-0005) at 37°C for 20 min;
Incubation: Anti-SCF Polyclonal Antibody, Unconjugated(SL0545R) 1:200, overnight at 4°C, followed by conjugation to the secondary antibody(SP-0023) and DAB(C-0010) staining



Tissue/cell: rat spleen tissue; 4% Paraformaldehyde-fixed and paraffin-embedded;
Antigen retrieval: citrate buffer (0.01M, pH 6.0), Boiling bathing for 15min; Block
endogenous peroxidase by 3% Hydrogen peroxide for 30min; Blocking buffer
(normal goat serum,C-0005) at 37°C for 20 min;
Incubation: Anti-SCF Polyclonal Antibody, Unconjugated(SL0545R) 1:200,
overnight at 4°C, followed by conjugation to the secondary antibody(SP-0023) and
DAB(C-0010) staining



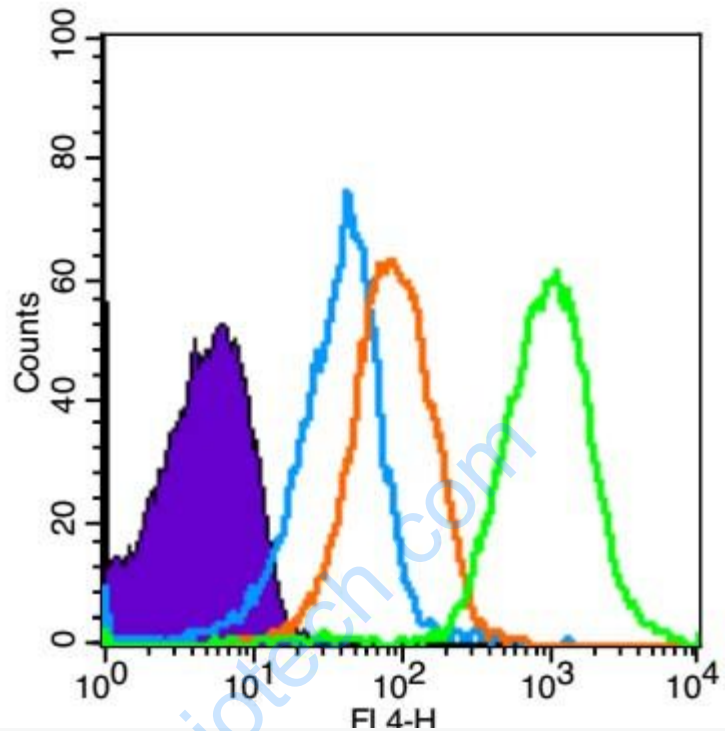
Tissue/cell: rat spleen tissue;4% Paraformaldehyde-fixed and paraffin-embedded;

Antigen retrieval: citrate buffer (0.01M, pH 6.0), Boiling bathing for 15min;

Blocking buffer (normal goat serum,C-0005) at 37°C for 20 min;

Incubation: Anti-SCF Polyclonal Antibody, Unconjugated(SL0545R) 1:200, overnight at 4°C; The secondary antibody was Goat Anti-Rabbit IgG, PE conjugated(SL0545R)used at 1:200 dilution for 40 minutes at 37°C.

DAPI(5ug/ml,blue,C-0033) was used to stain the cell nuclei



Blank control (Black line): Mouse spleen(Black).

Primary Antibody (green line): Rabbit Anti-SCF antibody (SL0545R)

Dilution: 3 μ g /10⁶ cells;

Isotype Control Antibody (orange line): Rabbit IgG .

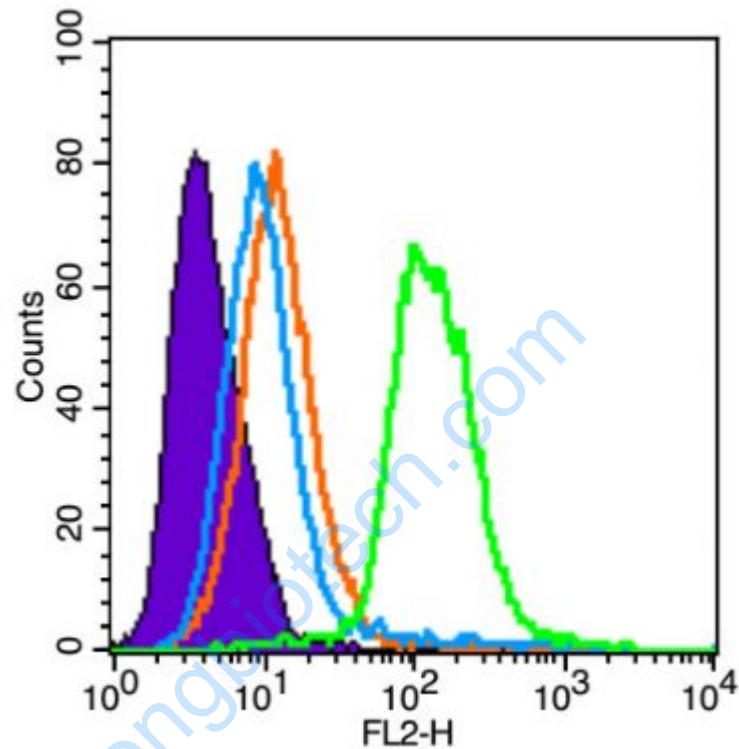
Secondary Antibody (white blue line): Goat anti-rabbit IgG-AF647

Dilution: 1 μ g /test.

Protocol

The cells were fixed with 4% PFA (10min at room temperature)and then permeabilized with 90% ice-cold methanol for 20 min at room temperature. The cells were then incubated in 5%BSA to block non-specific protein-protein interactions for 30 min at room temperature .Cells stained with Primary Antibody for 30 min at room temperature. The secondary antibody used for 40 min at room

temperature. Acquisition of 10,000 events was performed.



Blank control (Black line): U87MG (Black).

Primary Antibody (green line): Rabbit Anti-SCF antibody (SL0545R)

Dilution: 1 μ g /10⁶ cells;

Isotype Control Antibody (orange line): Rabbit IgG.

Secondary Antibody (white blue line): Goat anti-rabbit IgG-PE

Dilution: 1 μ g /test.

Protocol

The cells were fixed with 4% PFA (10min at room temperature)and then were incubated in 5%BSA to block non-specific protein-protein interactions for 30 min at room temperature .Cells stained with Primary Antibody for 30 min at room

temperature. The secondary antibody used for 40 min at room temperature.

Acquisition of 20,000 events was performed.

www.sunlongbiotech.com