



Rabbit Anti-IL-1 Alpha Propeptide antibody

SL0555R

Product Name:	IL-1 Alpha Propeptide
Chinese Name:	白介素1 α /IL-1 α 抗体
Alias:	interleukin-1 alpha; Hematopoietin 1; IL 1 alpha; IL1 alpha; IL 1; IL 1A; Il-1a; IL1; IL1A; IL1F1; ilia; Interleukin 1 alpha; Interleukin 1 alpha precursor; Interleukin1 alpha; Preinterleukin 1 alpha; Pro interleukin 1 alpha; Prointerleukin 1 alpha; IL1A_HUMAN.
Organism Species:	Rabbit
Clonality:	Polyclonal
React Species:	Human,Mouse,Rat,Dog,Pig,Cow,Sheep,
Applications:	WB=1:500-2000ELISA=1:500-1000IHC-P=1:400-800IHC-F=1:400-800IF=1:100-500 (Paraffin sections need antigen repair) not yet tested in other applications. optimal dilutions/concentrations should be determined by the end user.
Molecular weight:	12/31kDa
Cellular localization:	cytoplasmicSecretory protein
Form:	Lyophilized or Liquid
Concentration:	1mg/ml
immunogen:	KLH conjugated synthetic peptide derived from human interleukin-1 alpha Propeptide:51-112/270
Lsotype:	IgG
Purification:	affinity purified by Protein A
Storage Buffer:	0.01M TBS(pH7.4) with 1% BSA, 0.03% Proclin300 and 50% Glycerol.
Storage:	Store at -20 °C for one year. Avoid repeated freeze/thaw cycles. The lyophilized antibody is stable at room temperature for at least one month and for greater than a year when kept at -20°C. When reconstituted in sterile pH 7.4 0.01M PBS or diluent of antibody the antibody is stable for at least two weeks at 2-4 °C.
PubMed:	PubMed
Product Detail:	Interleukins (ILs) are a large group of cytokines that are produced mainly by leukocytes, although some are produced by certain phagocytes and auxiliary cells. Each IL acts on a specific, limited group of cells through a receptor specific for that IL. Interleukin 1 (IL1), originally known as lymphocyte activating factor (LAF), activates T cells and

lymphocytes, which then proliferate and secrete interleukin 2. IL1 is primarily released from stimulated macrophages and monocytes, but also is released from several other cell types and is thought to play a key role in inflammatory and immune responses. The two closely related agents, interleukin 1 alpha (IL1 alpha) and interleukin 1 beta (IL1 beta) bind to the same cell surface receptor, elicit nearly identical biological responses and share 25% homology in their amino acid sequence.

Function:

Produced by activated macrophages, IL-1 stimulates thymocyte proliferation by inducing IL-2 release, B-cell maturation and proliferation, and fibroblast growth factor activity. IL-1 proteins are involved in the inflammatory response, being identified as endogenous pyrogens, and are reported to stimulate the release of prostaglandin and collagenase from synovial cells.

Subunit:

Monomer.

Subcellular Location:

Secreted. Note=The lack of a specific hydrophobic segment in the precursor sequence suggests that IL-1 is released by damaged cells or is secreted by a mechanism differing from that used for other secretory proteins.

Similarity:

Belongs to the IL-1 family.

SWISS:

P01583

Gene ID:

3552

Database links:

[Entrez Gene: 3552](#)Human

[Entrez Gene: 16175](#)Mouse

[Entrez Gene: 24493](#)Rat

[Omim: 147760](#)Human

[SwissProt: P01583](#)Human

[SwissProt: P01582](#)Mouse

[SwissProt: P16598](#)Rat

[Unigene: 1722](#)Human

[Unigene: 15534](#)Mouse

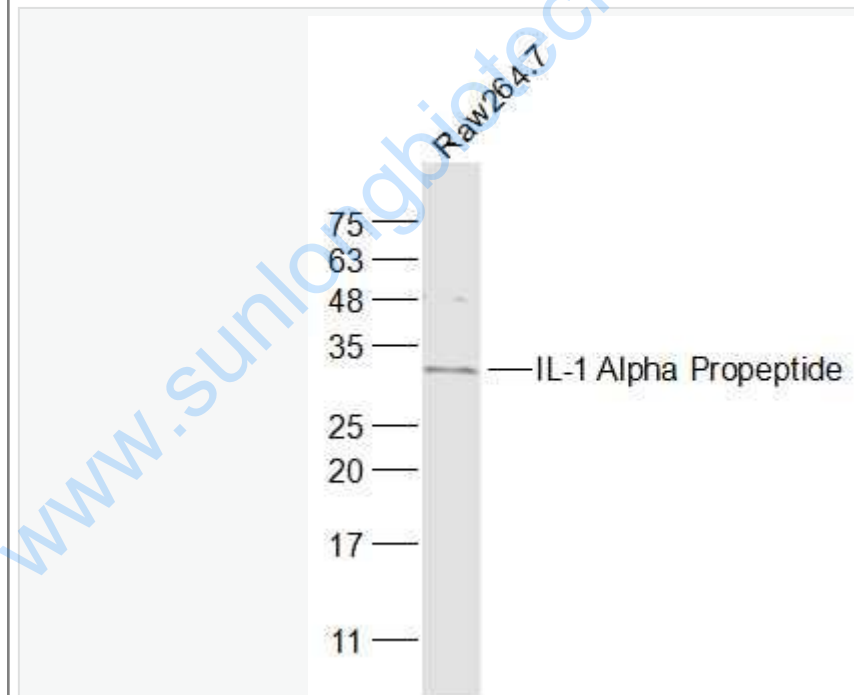
[Unigene: 12300](#)Rat

Important Note:

This product as supplied is intended for research use only, not for use in human, therapeutic or diagnostic applications.

IL-1 α 主要由胶原细胞产生。

Picture:



Sample:

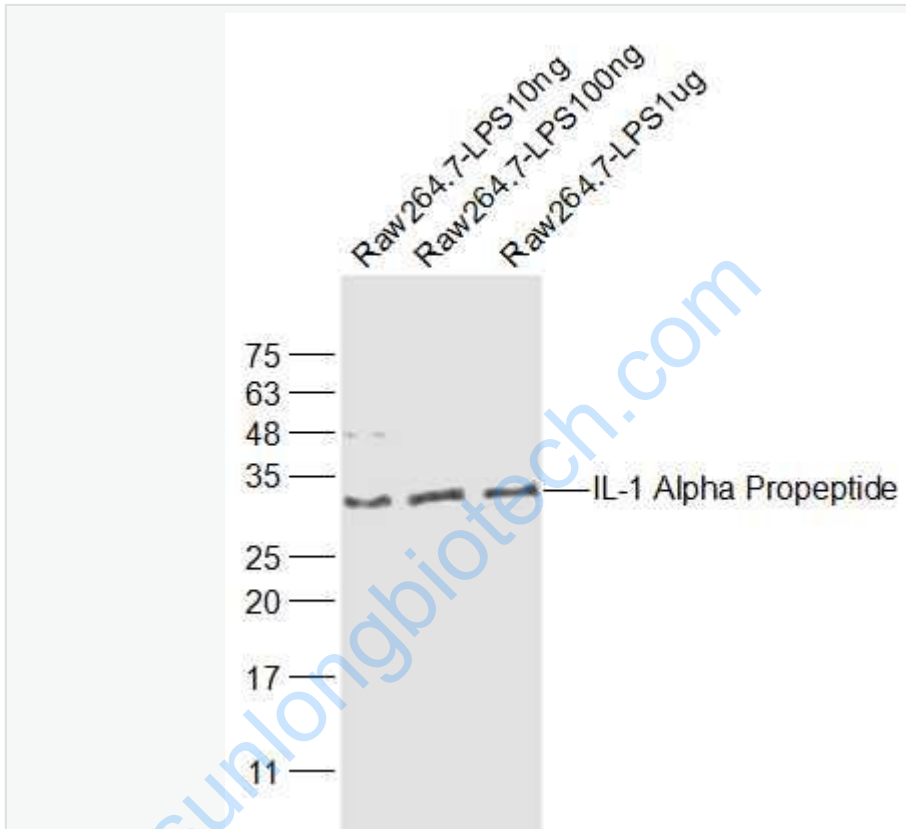
Raw264.7(Mouse) Cell Lysate at 30 ug

Primary: Anti-IL-1 Alpha Propeptide (SL0555R) at 1/1000 dilution

Secondary: IRDye800CW Goat Anti-Rabbit IgG at 1/20000 dilution

Predicted band size: 12/31 kD

Observed band size: 31 kD



Sample:

Raw264.7-LPS(Mouse) Cell Lysate at 10 ng

Raw264.7-LPS(Mouse) Cell Lysate at 100 ng

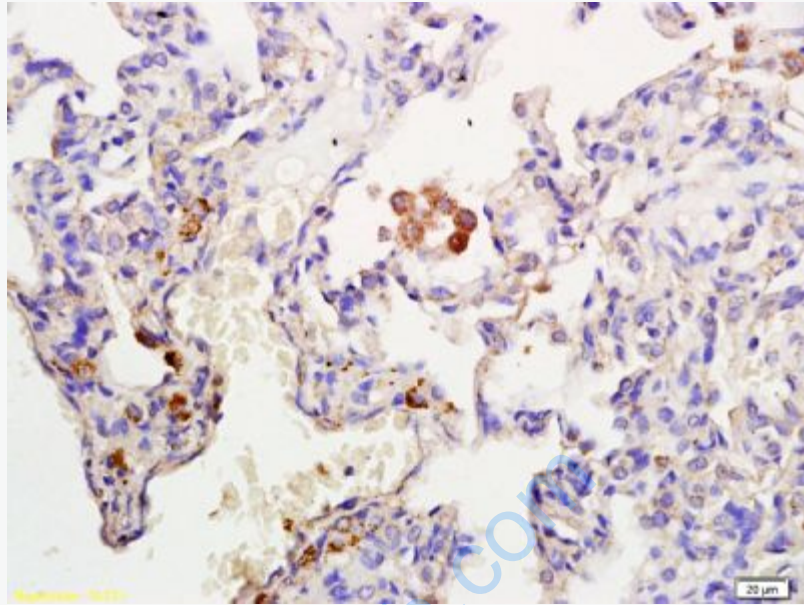
Raw264.7-LPS(Mouse) Cell Lysate at 1 ug

Primary: Anti-IL-1 Alpha Propeptide (SL0555R) at 1/1000 dilution

Secondary: IRDye800CW Goat Anti-Rabbit IgG at 1/20000 dilution

Predicted band size: 12/31 kD

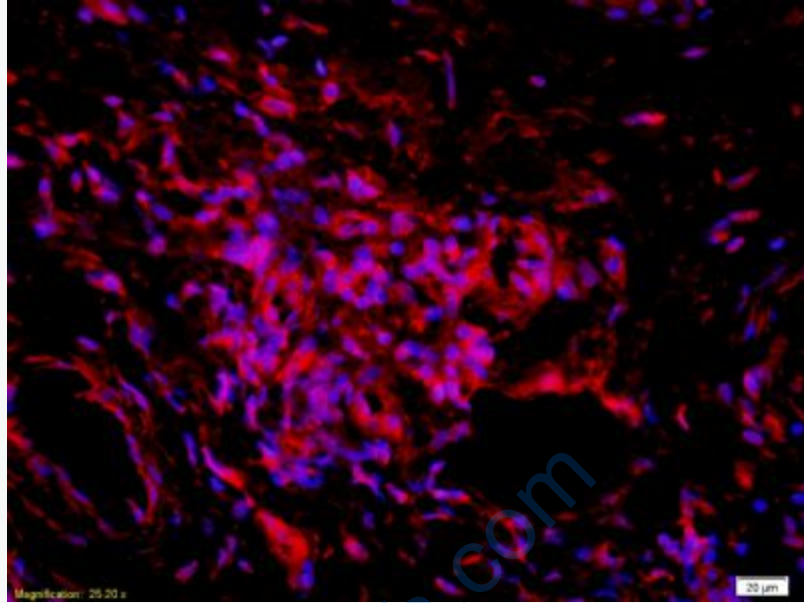
Observed band size: 31 kD



Tissue/cell: human pneumonia tissue; 4% Paraformaldehyde-fixed and paraffin-embedded;

Antigen retrieval: citrate buffer (0.01M, pH 6.0), Boiling bathing for 15min; Block endogenous peroxidase by 3% Hydrogen peroxide for 30min; Blocking buffer (normal goat serum,C-0005) at 37°C for 20 min;

Incubation: Anti-IL-1 Alpha Polyclonal Antibody, Unconjugated(SL0555R) 1:200, overnight at 4°C, followed by conjugation to the secondary antibody(SP-0023) and DAB(C-0010) staining



Tissue/cell: human lung carcinoma;4% Paraformaldehyde-fixed and paraffin-embedded;

Antigen retrieval: citrate buffer (0.01M, pH 6.0), Boiling bathing for 15min;

Blocking buffer (normal goat serum,C-0005) at 37°C for 20 min;

Incubation: Anti-IL-1 Alpha Polyclonal Antibody, Unconjugated(SL0555R) 1:200, overnight at 4°C; The secondary antibody was Goat Anti-Rabbit IgG, Cy3 conjugated(SL0555R)used at 1:200 dilution for 40 minutes at 37°C.

DAPI(5ug/ml,blue,C-0033) was used to stain the cell nuclei