



## Rabbit Anti-CD62p antibody

SL0561R

<b>Product Name:</b>	CD62p
<b>Chinese Name:</b>	P选择素/白细胞endothelial cells粘附分子3抗体
<b>Alias:</b>	CD62 antigen-like family member P; GMP 140; GMP-140; GMRP; Granule membrane protein 140; Granulocyte membrane protein; GRMP; LECAM 3; LECAM3; Leukocyte endothelial cell adhesion molecule 3; Leukocyte-endothelial cell adhesion molecule 3; LYAM3_HUMAN; P Selectin; P-selectin; PADGEM; Platelet activation dependent granule-external membrane protein; PSEL; sp-selectin.
<b>文献引用</b> PubMed :	<p><b>Specific References(2)</b> SL0561R has been referenced in 2 publications.</p> <p><b>[IF=5.21]</b>Ma, Yanqin, et al. "Inflammatory responses induced by fluoride and arsenic at toxic concentration in rabbit aorta." Archives of toxicology 86.6 (2012): 849-856.<b>WB;Rabbit.</b>  <a href="#">PubMed:22422340</a></p> <p><b>[IF=1.38]</b>Hu, Zhibin, et al. "Comparative analysis of preservation method and intermittent perfusion volume on the expression of endothelial and inflammatory markers by coronal artery and myocardium in porcine donor hearts." ASAIO journal (American Society for Artificial Internal Organs: 1992) (2014).<b>IHC-P;Pig.</b>  <a href="#">PubMed:25232770</a></p>
<b>Organism Species:</b>	Rabbit
<b>Clonality:</b>	Polyclonal
<b>React Species:</b>	Human,Mouse,Rat,Dog,Pig,Cow,Horse,
<b>Applications:</b>	ELISA=1:500-1000IHC-P=1:400-800IHC-F=1:400-800Flow-Cyt=1µg/TestIF=1:100-500 (Paraffin sections need antigen repair) not yet tested in other applications. optimal dilutions/concentrations should be determined by the end user.
<b>Molecular weight:</b>	88kDa

<b>Cellular localization:</b>	The cell membrane
<b>Form:</b>	Lyophilized or Liquid
<b>Concentration:</b>	1mg/ml
<b>immunogen:</b>	KLH conjugated synthetic peptide derived from mouse P-selectin:701-768/768<Cytoplasmic>
<b>Lsotype:</b>	IgG
<b>Purification:</b>	affinity purified by Protein A
<b>Storage Buffer:</b>	0.01M TBS(pH7.4) with 1% BSA, 0.03% Proclin300 and 50% Glycerol.
<b>Storage:</b>	Store at -20 °C for one year. Avoid repeated freeze/thaw cycles. The lyophilized antibody is stable at room temperature for at least one month and for greater than a year when kept at -20°C. When reconstituted in sterile pH 7.4 0.01M PBS or diluent of antibody the antibody is stable for at least two weeks at 2-4 °C.
<b>PubMed:</b>	<a href="#">PubMed</a>
<b>Product Detail:</b>	<p>This gene encodes a 140 kDa protein that is stored in the alpha-granules of platelets and Weibel-Palade bodies of endothelial cells. This protein redistributes to the plasma membrane during platelet activation and degranulation and mediates the interaction of activated endothelial cells or platelets with leukocytes. The membrane protein is a calcium-dependent receptor that binds to sialylated forms of Lewis blood group carbohydrate antigens on neutrophils and monocytes. Alternative splice variants may occur but are not well documented. [provided by RefSeq, Jul 2008]</p> <p><b>Function:</b> Ca(2+)-dependent receptor for myeloid cells that binds to carbohydrates on neutrophils and monocytes. Mediates the interaction of activated endothelial cells or platelets with leukocytes. The ligand recognized is sialyl-Lewis X. Mediates rapid rolling of leukocyte rolling over vascular surfaces during the initial steps in inflammation through interaction with PSGL1.</p> <p><b>Subunit:</b> Interacts with SNX17. Interacts with PSGL1/SEPL and PODXL2 and mediates neutrophil adhesion and leukocyte rolling. This interaction requires the sialyl-Lewis X epitope of PSGL1 and PODXL2, and specific tyrosine sulfation on PSGL1.</p> <p><b>Subcellular Location:</b> Membrane; Single-pass type I membrane protein.</p> <p><b>Tissue Specificity:</b> Stored in the alpha-granules of platelets and Weibel-Palade bodies of endothelial cells. Upon cell activation by agonists, P-selectin is transported rapidly to the cell surface.</p> <p><b>DISEASE:</b> Defects in SELP may be a cause of susceptibility to ischemic stroke (ISCHSTR) [MIM:601367]; also known as cerebrovascular accident or cerebral infarction. A stroke is an acute neurologic event leading to death of neural tissue of the brain and resulting in loss of motor, sensory and/or cognitive function. Ischemic strokes, resulting from vascular occlusion, is considered to be a highly complex disease consisting of a group of</p>

heterogeneous disorders with multiple genetic and environmental risk factors.

**Similarity:**

Belongs to the selectin/LECAM family.

Contains 1 C-type lectin domain.

Contains 1 EGF-like domain.

Contains 9 Sushi (CCP/SCR) domains.

**SWISS:**

Q01102

**Gene ID:**

6403

**Database links:**

[Entrez Gene: 6403](#)Human

[Entrez Gene: 20344](#)Mouse

[Entrez Gene: 25651](#)Rat

[Omin: 173610](#)Human

[SwissProt: P16109](#)Human

[SwissProt: Q01102](#)Mouse

[SwissProt: P98106](#)Rat

[Unigene: 73800](#)Human

**Important Note:**

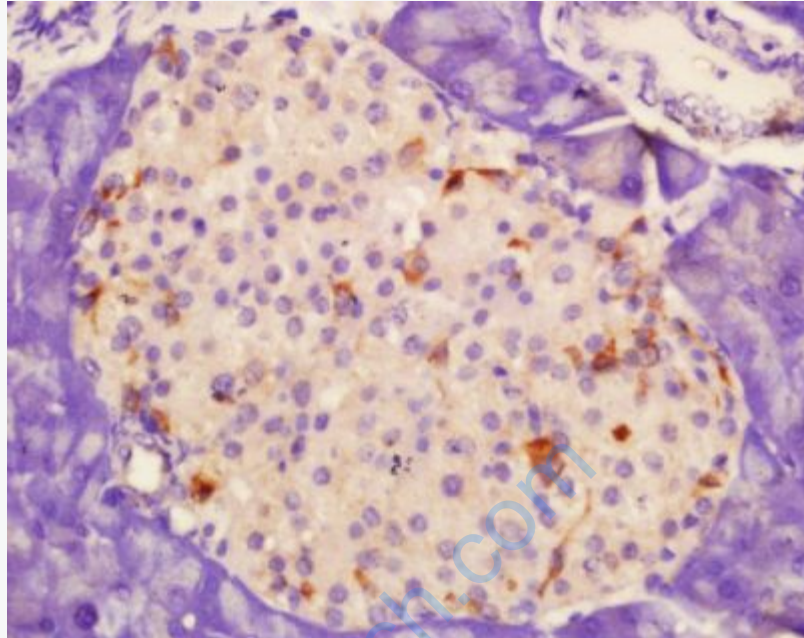
This product as supplied is intended for research use only, not for use in human, therapeutic or diagnostic applications.

P-选择素(P—

selectin)是细胞黏附分子选择素家族的主要成员, 又称CD62p, 可以介导各种白细胞和Tumour细胞的粘附。

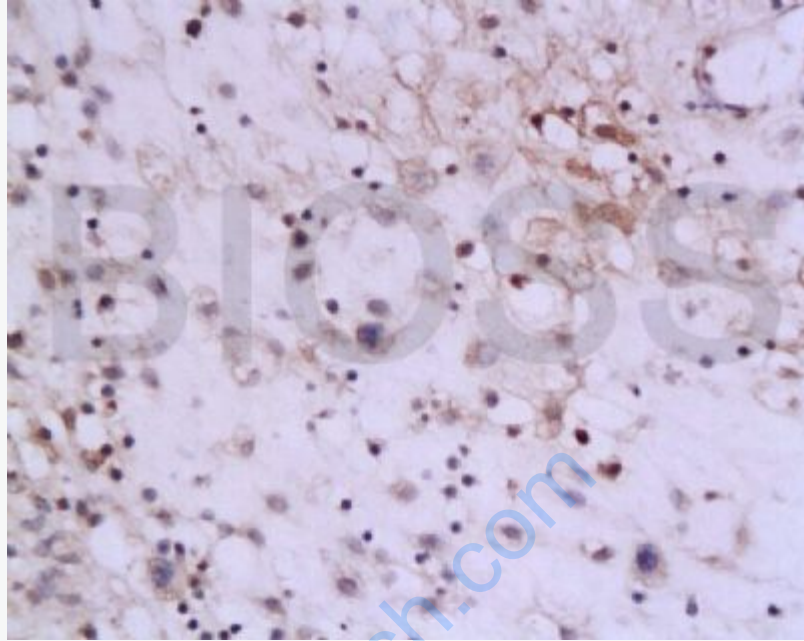
CD62p又称GMP—

140或PADGEM蛋白(血小板活化依赖 $\alpha$ 颗粒膜蛋白),它在血小板与单核细胞及中性粒细胞相互作用中起关键作用。

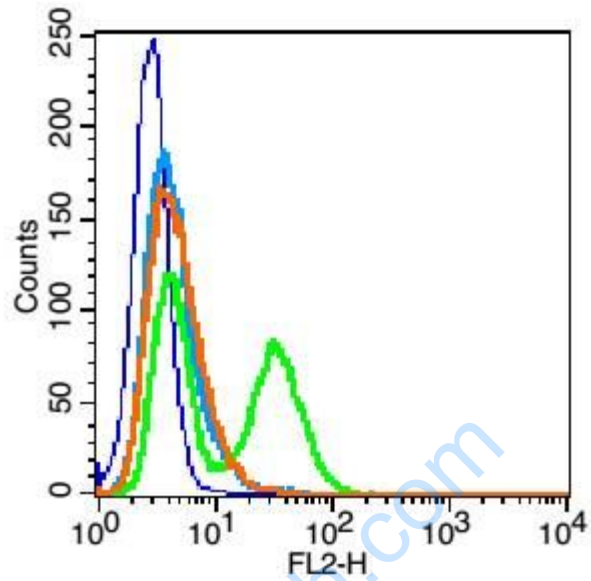


**Picture:**

Tissue/cell: rat pancreas tissue; 4% Paraformaldehyde-fixed and paraffin-embedded;  
Antigen retrieval: citrate buffer ( 0.01M, pH 6.0 ), Boiling bathing for 15min; Block  
endogenous peroxidase by 3% Hydrogen peroxide for 30min; Blocking buffer  
(normal goat serum,C-0005) at 37°C for 20 min;  
Incubation: Anti-P-selectin Polyclonal Antibody, Unconjugated(SL0561R) 1:200,  
overnight at 4°C, followed by conjugation to the secondary antibody(SP-0023) and  
DAB(C-0010) staining



Tissue/cell: rat colon tissue; 4% Paraformaldehyde-fixed and paraffin-embedded;  
Antigen retrieval: citrate buffer ( 0.01M, pH 6.0 ), Boiling bathing for 15min; Block endogenous peroxidase by 3% Hydrogen peroxide for 30min; Blocking buffer (normal goat serum,C-0005) at 37°C for 20 min;  
Incubation: Anti-P-selectin Polyclonal Antibody, Unconjugated(SL0561R) 1:200, overnight at 4°C, followed by conjugation to the secondary antibody(SP-0023) and DAB(C-0010) staining



Blank control: HUVEC cells(blue).

Primary Antibody:Rabbit Anti-CD62p antibody(SL0561R), Dilution: 1 $\mu$ g in 100  $\mu$ L  
1X PBS containing 0.5% BSA;

Isotype Control Antibody: Rabbit IgG(orange) ,used under the same conditions );

Secondary Antibody: Goat anti-rabbit IgG-PE(white blue), Dilution: 1:200 in 1 X  
PBS containing 0.5% BSA.

#### Protocol

The cells were fixed with 2% paraformaldehyde (10 min) .Primary antibody (SL0561R) were incubated for 30 min on the ice, followed by 1 X PBS containing 0.5% BSA + 1 0% goat serum (15 min) to block non-specific protein-protein interactions. Then the Goat Anti-rabbit IgG/PE antibody was added into the blocking buffer mentioned above to react with the primary antibody at 1/200 dilution for 30 min on ice. Acquisition of 20,000 events was performed.