



Rabbit Anti-Annexin A2 antibody

SL0576R

Product Name:	Annexin A2
Chinese Name:	膜粘连蛋白 II 抗体
Alias:	ANX 2; ANX2; ANX2L4; ANXA2; arylsulfatase B; CAL1H; Calpactin I heavy chain; calpactin I heavy polypeptide (p36); chromobindin 8; LIP2; Lipocortin II; LPC2; LPC2D; P36; P36 protein; PAP-IV; placental anticoagulant protein IV; Protein I; ANXA2_HUMAN; Annexin II; Annexin-2; Calpactin-1 heavy chain; Chromobindin-8; Placental anticoagulant protein IV.
文献引用 PubMed :	Specific References(1) SL0576R has been referenced in 1 publications. [IF=2.84]Geng, Xiaofang, et al. "Differential proteome analysis of the cell differentiation regulated by BCC, CRH, CXCR4, GnRH, GPCR, IL1 signaling pathways in Chinese fire-bellied newt limb regeneration." Differentiation (2014). WB ; PubMed:25465723
Organism Species:	Rabbit
Clonality:	Polyclonal
React Species:	Human,Mouse,Rat,Chicken,Dog,Cow,Sheep,
Applications:	WB=1:500-2000ELISA=1:500-1000 not yet tested in other applications. optimal dilutions/concentrations should be determined by the end user.
Molecular weight:	36kDa
Cellular localization:	cytoplasmicThe cell membraneExtracellular matrixSecretory protein
Form:	Lyophilized or Liquid
Concentration:	1mg/ml
immunogen:	KLH conjugated synthetic peptide derived from human Annexin II:256-339/339
Lsotype:	IgG
Purification:	affinity purified by Protein A
Storage Buffer:	0.01M TBS(pH7.4) with 1% BSA, 0.03% Proclin300 and 50% Glycerol.
Storage:	Store at -20 °C for one year. Avoid repeated freeze/thaw cycles. The lyophilized

	antibody is stable at room temperature for at least one month and for greater than a year when kept at -20°C. When reconstituted in sterile pH 7.4 0.01M PBS or diluent of antibody the antibody is stable for at least two weeks at 2-4 °C.
PubMed:	PubMed
Product Detail:	<p>This gene encodes a member of the annexin family. Members of this calcium-dependent phospholipid-binding protein family play a role in the regulation of cellular growth and in signal transduction pathways. This protein functions as an autocrine factor which heightens osteoclast formation and bone resorption. This gene has three pseudogenes located on chromosomes 4, 9 and 10, respectively. Multiple alternatively spliced transcript variants encoding different isoforms have been found for this gene. [provided by RefSeq, Jul 2008].</p> <p>Function: Calcium-regulated membrane-binding protein whose affinity for calcium is greatly enhanced by anionic phospholipids. It binds two calcium ions with high affinity. May be involved in heat-stress response.</p> <p>Subunit: Heterotetramer containing 2 light chains of S100A10/p11 and 2 heavy chains of ANXA2/p36. Interacts with ATP1B1 and DYSF. Interacts with human cytomegalovirus (HCMV). Interacts with COCH.</p> <p>Subcellular Location: Secreted, extracellular space, extracellular matrix, basement membrane. Melanosome. Note=In the lamina beneath the plasma membrane. Identified by mass spectrometry in melanosome fractions from stage I to stage IV. Translocated from the cytoplasm to the cell surface through a Golgi-independent mechanism.</p> <p>Post-translational modifications: Phosphorylation of Tyr-24 enhances heat stress-induced translocation to the cell surface. ISGylated.</p> <p>Similarity: Belongs to the annexin family. Contains 4 annexin repeats.</p> <p>SWISS: P07355</p> <p>Gene ID: 302</p> <p>Database links: Entrez Gene: 302Human</p>

[Entrez Gene: 12306](#)Mouse

[Entrez Gene: 56611](#)Rat

[Oimim: 151740](#)Human

[SwissProt: P07355](#)Human

[SwissProt: P07356](#)Mouse

[SwissProt: Q07936](#)Rat

[Unigene: 511605](#)Human

[Unigene: 238343](#)Mouse

[Unigene: 90546](#)Rat

Important Note:

This product as supplied is intended for research use only, not for use in human, therapeutic or diagnostic applications.

信号传导 (Signaling Intermediates)

Annexin

2是新近发现的纤维蛋白溶解酶原(PLG)和组织型纤溶蛋白溶解酶原激活物(t-PA)的共受体,是Ca²⁺介导具有高亲和力的磷脂Binding protein.其介导血管内外纤维蛋白溶解,对保持机体内环境稳定具有重要作用.

依赖性膜磷脂Binding proteinAnnexin

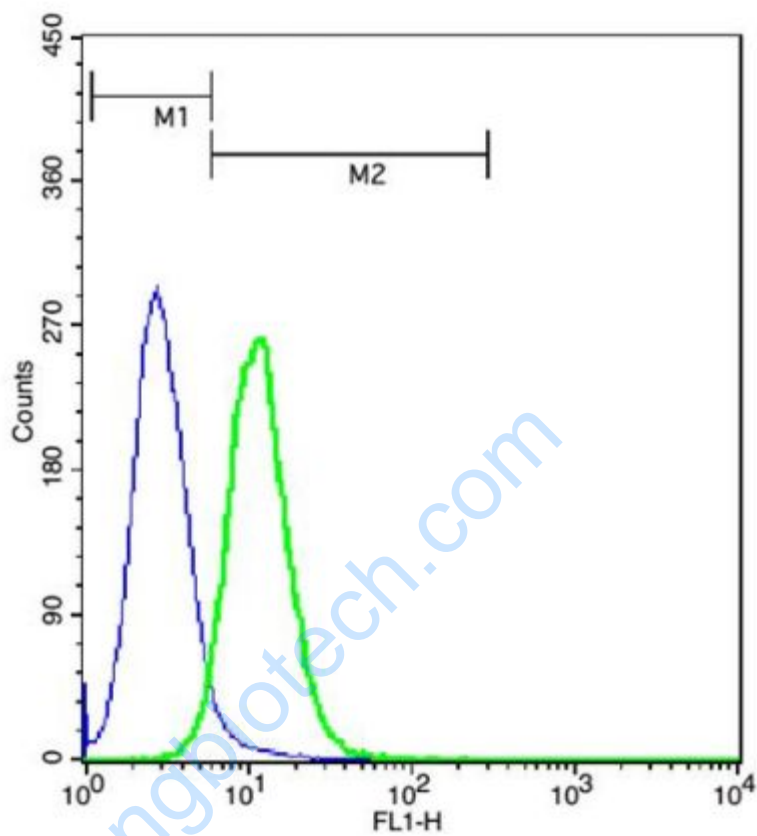
II调控异常及有害因子的作用,可导致血栓性疾病和动脉硬化症

钙依赖性膜磷脂Binding

protein膜粘连蛋白2异常高表达所引起纤溶亢进,是白血病等恶性Tumour出血合并症重要机制之一.钙依赖性磷脂Binding

protein对其干预和调控可能为治疗上述病症提供新思路,为临床治疗开辟新途径.

Picture:



Cell: U937.

Concentration: 1:50.

Incubation: 40 minutes, room temperature.

Host/Blank: U937 cells.

Flow cytometric analysis of Rabbit Anti-Annexin A2/FITC Conjugated antibody (SL0576R) (green) compared with control in the absence of primary antibody (blue) followed by U937 cells.