



## Rabbit Anti-Dopamine beta Hydroxylase antibody

SL0596R

<b>Product Name:</b>	Dopamine beta Hydroxylase
<b>Chinese Name:</b>	多巴胺β羟化酶抗体
<b>Alias:</b>	DBH; DBM; Dopamine beta hydroxylase; Dopamine-Beta-Hydroxylase; Dopamine beta monooxygenase; DOPO_RAT; DOPO_HUMAN.
<b>Organism Species:</b>	Rabbit
<b>Clonality:</b>	Polyclonal
<b>React Species:</b>	Human,Mouse,Rat,
<b>Applications:</b>	WB=1:500-2000ELISA=1:500-1000IHC-P=1:400-800IHC-F=1:400-800IF=1:100-500 (Paraffin sections need antigen repair) not yet tested in other applications. optimal dilutions/concentrations should be determined by the end user.
<b>Molecular weight:</b>	70kDa
<b>Cellular localization:</b>	cytoplasmicThe cell membrane
<b>Form:</b>	Lyophilized or Liquid
<b>Concentration:</b>	1mg/ml
<b>immunogen:</b>	KLH conjugated synthetic peptide derived from human DBH:471-550/621
<b>Lsotype:</b>	IgG
<b>Purification:</b>	affinity purified by Protein A
<b>Storage Buffer:</b>	0.01M TBS(pH7.4) with 1% BSA, 0.03% Proclin300 and 50% Glycerol.
<b>Storage:</b>	Store at -20 °C for one year. Avoid repeated freeze/thaw cycles. The lyophilized antibody is stable at room temperature for at least one month and for greater than a year when kept at -20°C. When reconstituted in sterile pH 7.4 0.01M PBS or diluent of antibody the antibody is stable for at least two weeks at 2-4 °C.
<b>PubMed:</b>	<a href="#">PubMed</a>
<b>Product Detail:</b>	Dopamine-beta-Hydroxylase (DBH), Dopamine can be transformed into Noradrenalin. Conversion of dopamine to noradrenaline. [SUBUNIT] Homotetramer composed of two non-covalently bound disulfide-linked dimers. [SUBCELLULAR LOCATION] Soluble dopamine beta-hydroxylase: Cytoplasmic vesicle, secretory vesicle lumen. Cytoplasmic vesicle, secretory vesicle, chromaffin granule lumen. Cytoplasmic vesicle, secretory vesicle membrane; Single-pass type II membrane protein. Cytoplasmic vesicle, secretory

vesicle, chromaffin granule membrane; Single-pass type II membrane protein (Potential). Belongs to the copper type II ascorbate-dependent monooxygenase family.

**Function:**

Conversion of dopamine to noradrenaline.

**Subunit:**

Homotetramer composed of two non-covalently bound disulfide-linked dimers (By similarity).

**Subcellular Location:**

Soluble dopamine beta-hydroxylase: Cytoplasmic vesicle, secretory vesicle lumen (By similarity). Cytoplasmic vesicle, secretory vesicle, chromaffin granule lumen (By similarity).

Cytoplasmic vesicle, secretory vesicle membrane; Single-pass type II membrane protein (By similarity). Cytoplasmic vesicle, secretory vesicle, chromaffin granule membrane; Single-pass type II membrane protein (By similarity).

**Tissue Specificity:**

Chromaffin granules of the adrenal medulla and synaptic vesicles of the sympathetic nervous system.

**Similarity:**

Belongs to the copper type II ascorbate-dependent monooxygenase family. Contains 1 DOMON domain.

**SWISS:**

P09172

**Gene ID:**

1621

**Database links:**

[Entrez Gene: 280758](#)Cow

[Entrez Gene: 1621](#)Human

[Entrez Gene: 13166](#)Mouse

[Entrez Gene: 25699](#)Rat

[Omim: 223360](#)Human

[Omim: 609312](#)Human

[SwissProt: P15101](#)Cow

[SwissProt: P09172](#)Human

[SwissProt: Q64237](#)Mouse

[SwissProt: Q05754](#)Rat

[Unigene: 223858](#)Human

[Unigene: 591890](#)Human

[Unigene: 167781](#)Mouse

[Unigene: 87166](#)Rat

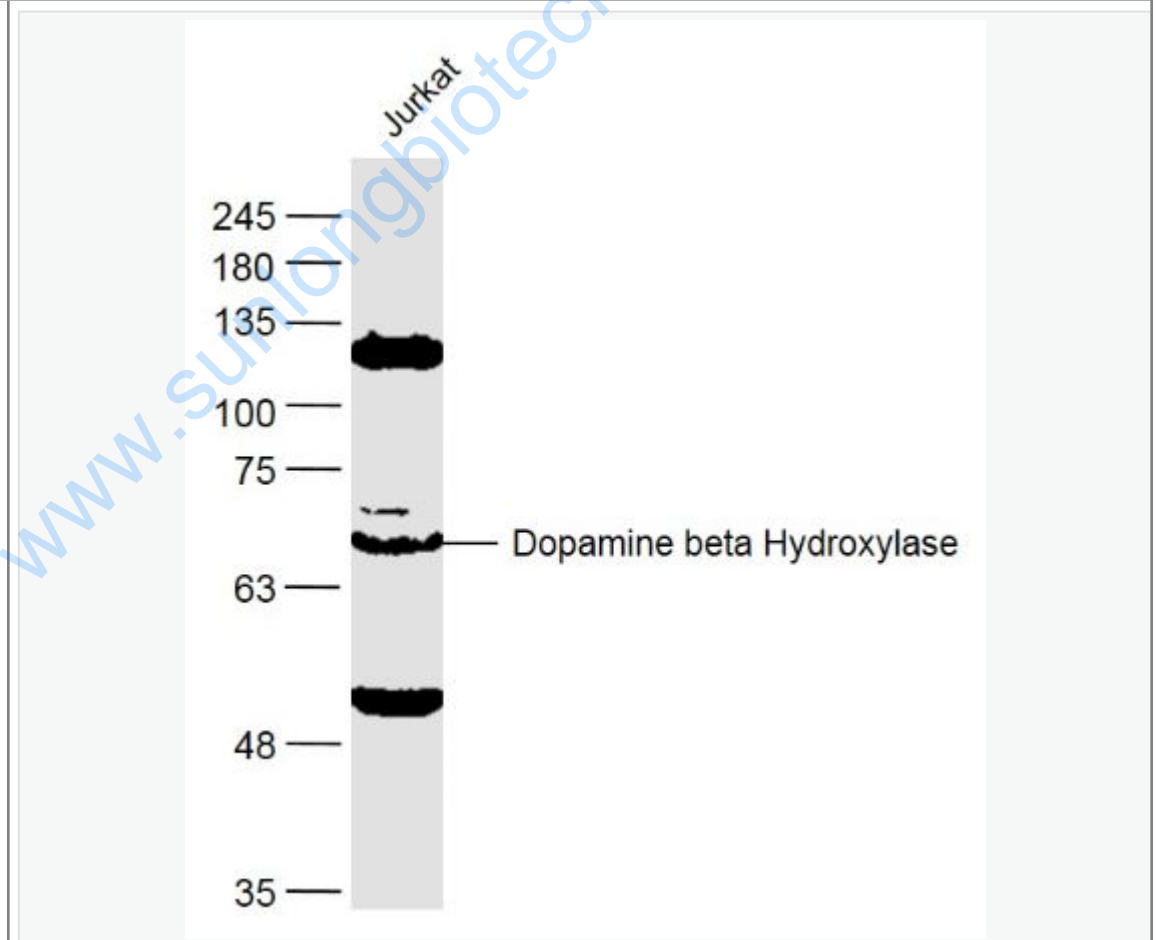
**Important Note:**

This product as supplied is intended for research use only, not for use in human, therapeutic or diagnostic applications.

Dopamine- $\beta$ -Hydroxylase (DBH)—

多巴胺 $\beta$ 羟化酶。可以将多巴胺转化成去甲肾上腺素。是肾上腺素能神经元的标志。

Picture:



Sample:

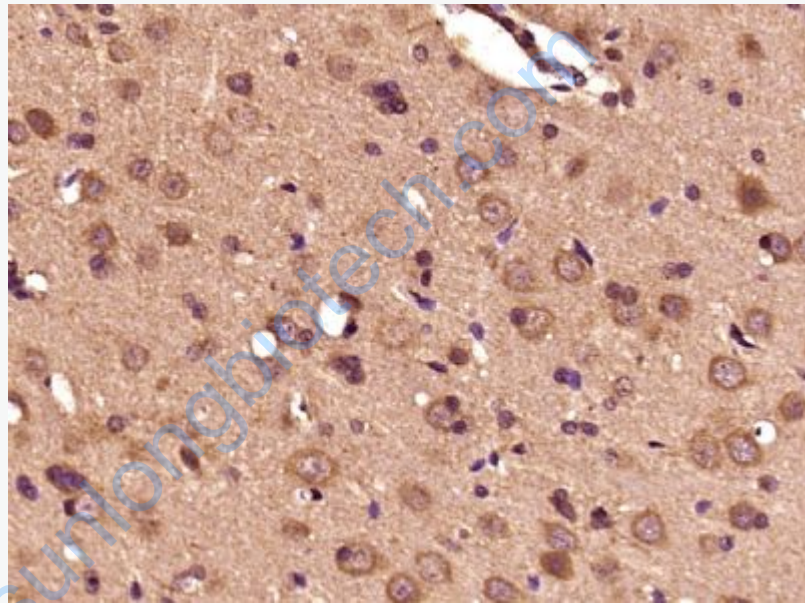
Jurkat (Human) Cell Lysate at 40 ug

Primary: Anti-Dopamine beta Hydroxylase (SL0596R) at 1/300 dilution

Secondary: IRDye800CW Goat Anti-Rabbit IgG at 1/20000 dilution

Predicted band size: 70 kD

Observed band size: 70 kD



Paraformaldehyde-fixed, paraffin embedded (Rat brain); Antigen retrieval by boiling in sodium citrate buffer (pH6.0) for 15min; Block endogenous peroxidase by 3% hydrogen peroxide for 20 minutes; Blocking buffer (normal goat serum) at 37°C for 30min; Antibody incubation with (DOPO) Polyclonal Antibody, Unconjugated (SL0596R) at 1:400 overnight at 4°C, followed by operating according to SP Kit(Rabbit) (sp-0023) instructions and DAB staining.