



Rabbit Anti-gamma Synuclein antibody

SL0622R

Product Name:	gamma Synuclein
Chinese Name:	核突触蛋白- γ 抗体
Alias:	BCSG1; gamma-Synuclein; Breast cancer specific gene 1 protein; Breast cancer specific protein 1; Breast cancer-specific gene 1 protein; Gamma synuclein; Persyn; PRSN; SNCG; SR; Synoretin; Synuclein gamma; SYUG_HUMAN.
Organism Species:	Rabbit
Clonality:	Polyclonal
React Species:	Human,Mouse,Rat,Dog,
Applications:	WB=1:500-2000ELISA=1:500-1000IHC-P=1:400-800IHC-F=1:400-800IF=1:100-500 (Paraffin sections need antigen repair) not yet tested in other applications. optimal dilutions/concentrations should be determined by the end user.
Molecular weight:	13.5kDa
Cellular localization:	cytoplasmic
Form:	Lyophilized or Liquid
Concentration:	1mg/ml
immunogen:	KLH conjugated synthetic peptide derived from human gamma Synuclein:2-123/123
Lsotype:	IgG
Purification:	affinity purified by Protein A
Storage Buffer:	0.01M TBS(pH7.4) with 1% BSA, 0.03% Proclin300 and 50% Glycerol.
Storage:	Store at -20 °C for one year. Avoid repeated freeze/thaw cycles. The lyophilized antibody is stable at room temperature for at least one month and for greater than a year when kept at -20°C. When reconstituted in sterile pH 7.4 0.01M PBS or diluent of antibody the antibody is stable for at least two weeks at 2-4 °C.
PubMed:	PubMed
Product Detail:	The synuclein family consists of 3 highly conserved proteins of between 120 and 140 amino acids that share substantial sequence homology. Each has a series of loosely repeated motifs throughout the first 93 amino acids and an acid region toward the C terminal. The proteins are heat stable and relatively soluble. Three synucleins have been identified and termed alpha, beta and gamma synuclein and are located in the neuronal

cytosol and enriched in presynaptic terminals, gamma synuclein is also expressed in many other non-neuronal tissues. Although the precise function of the synucleins are unknown a role in membrane plasticity has been suggested. The synucleins have been implicated in a number of diseases. It has been reported that in breast cancer increased expression of gamma synuclein correlates with disease progression.

Function:

Plays a role in neurofilament network integrity. May be involved in modulating axonal architecture during development and in the adult. In vitro, increases the susceptibility of neurofilament-H to calcium-dependent proteases. May also function in modulating the keratin network in skin. Activates the MAPK and Elk-1 signal transduction pathway.

Subunit:

May be a centrosome-associated protein.

Subcellular Location:

Cytoplasm, perinuclear region. Cytoplasm, cytoskeleton, centrosome. Cytoplasm, cytoskeleton, spindle. Note=Associated with centrosomes in several interphase cells. In mitotic cells, localized to the poles of the spindle.

Tissue Specificity:

Highly expressed in brain, particularly in the substantia nigra. Also expressed in the corpus callosum, heart, skeletal muscle, ovary, testis, colon and spleen. Weak expression in pancreas, kidney and lung.

Post-translational modifications:

Phosphorylated. Phosphorylation by GRK5 appears to occur on residues distinct from the residue phosphorylated by other kinases.

Similarity:

Belongs to the synuclein family.

SWISS:

O76070

Gene ID:

6623

Database links:

[Entrez Gene: 6623](#)Human

[Entrez Gene: 20618](#)Mouse

[Entrez Gene: 64347](#)Rat

[Omim: 602998](#)Human

[SwissProt: O76070](#)Human

[SwissProt: Q9Z0F7](#)Mouse

[SwissProt: Q63544](#)Rat

[Unigene: 349470](#)Human

[Unigene: 282800](#)Mouse

[Unigene: 2883](#)Rat

Important Note:

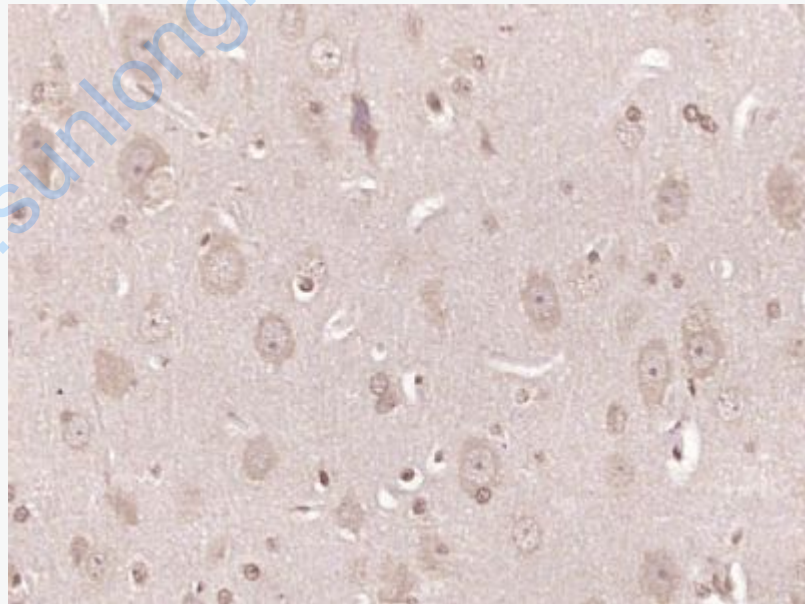
This product as supplied is intended for research use only, not for use in human, therapeutic or diagnostic applications.

Neurobiology相关蛋白 (Neurobiology)

SNCG (gamma-

Synuclein) 蛋白在各种癌症组织中呈广范表达, 存在较高的异常表达率, SNCG蛋白表达与癌症分期有关, I期表达率低, II~IV期表达率高。尤其重要的是:经研究发现无论何种原发性Tumour, SNCG蛋白的出现与癌症远处转移都有很高的关联性。

Picture:



Paraformaldehyde-fixed, paraffin embedded (rat brain tissue); Antigen retrieval by boiling in sodium citrate buffer (pH6.0) for 15min; Block endogenous peroxidase by 3% hydrogen peroxide for 20 minutes; Blocking buffer (normal goat serum) at 37°C

for 30min; Antibody incubation with (SYUG) Polyclonal Antibody, Unconjugated (SL0622R) at 1:400 overnight at 4°C, followed by operating according to SP Kit(Rabbit) (sp-0023) instructions and DAB staining.

www.sunlongbiotech.com