



Rabbit Anti-Estrogen Sulfotransferase antibody

SL0629R

Product Name:	Estrogen Sulfotransferase
Chinese Name:	雌激素硫酸转移酶抗体
Alias:	Estrogen Sulfotransferase; Ste; SULT1E1; Estrogen sulfotransferase, testis isoform; Sulfotransferase, estrogen-preferring; EST; EST1; STE; sulfotransferase family 1E, estrogen-preferring, member 1; Sulfotransferase estrogen preferring; ST1E1_HUMAN.
Organism Species:	Rabbit
Clonality:	Polyclonal
React Species:	Human,Mouse,Rat,Dog,Pig,Horse,Rabbit,
Applications:	WB=1:500-2000ELISA=1:500-1000 not yet tested in other applications. optimal dilutions/concentrations should be determined by the end user.
Molecular weight:	32kDa
Cellular localization:	cytoplasmic
Form:	Lyophilized or Liquid
Concentration:	1mg/ml
immunogen:	KLH conjugated synthetic peptide derived from human Estrogen Sulfotranferase:51-145/294
Lsotype:	IgG
Purification:	affinity purified by Protein A
Storage Buffer:	0.01M TBS(pH7.4) with 1% BSA, 0.03% Proclin300 and 50% Glycerol.
Storage:	Store at -20 °C for one year. Avoid repeated freeze/thaw cycles. The lyophilized antibody is stable at room temperature for at least one month and for greater than a year when kept at -20°C. When reconstituted in sterile pH 7.4 0.01M PBS or diluent of antibody the antibody is stable for at least two weeks at 2-4 °C.
PubMed:	PubMed
Product Detail:	Sulfotransferase enzymes catalyze the sulfate conjugation of many hormones, neurotransmitters, drugs, and xenobiotic compounds. These cytosolic enzymes are different in their tissue distributions and substrate specificities. The gene structure(number and length of exons) is similar among family members. This gene encodes a protein that transfers a sulfo moiety to and from estrone, which may control

levels of estrogen receptors.

Function:

Sulfotransferase that utilizes 3'-phospho-5'-adenylyl sulfate (PAPS) as sulfonate donor to catalyze the sulfate conjugation of estradiol and estrone. May play a role in the regulation of estrogen receptor activity by metabolizing free estradiol. Maximally sulfates beta-estradiol and estrone at concentrations of 20 nM. Also sulfates dehydroepiandrosterone, pregnenolone, ethinylestradiol, equalenin, diethylstilbesterol and 1-naphthol, at significantly higher concentrations; however, cortisol, testosterone and dopamine are not sulfated.

Subunit:

Homodimer.

Subcellular Location:

Cytoplasm.

Tissue Specificity:

Liver, intestine and at lower level in the kidney.

Similarity:

Belongs to the sulfotransferase 1 family.

SWISS:

P49888

Gene ID:

6783

Database links:

[Entrez Gene: 6783](#) Human

[Entrez Gene: 25355](#) Rat

[Omim: 600043](#) Human

[SwissProt: P49888](#) Human

[SwissProt: P52844](#) Rat

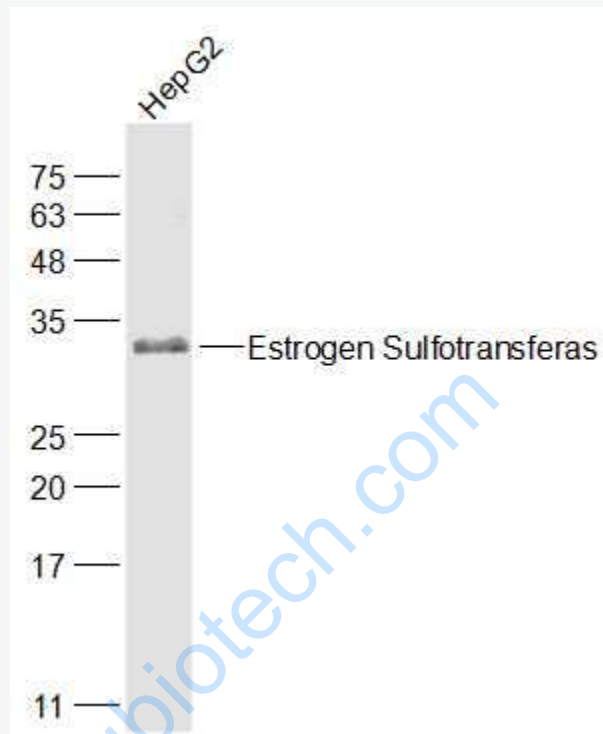
[Unigene: 479898](#) Human

Important Note:

This product as supplied is intended for research use only, not for use in human,

therapeutic or diagnostic applications.

Picture:



Sample:

HepG2(Human) Cell Lysate at 30 ug

Primary: Anti-Estrogen Sulfotransferase (SL0629R) at 1/1000 dilution

Secondary: IRDye800CW Goat Anti-Rabbit IgG at 1/20000 dilution

Predicted band size: 32 kD

Observed band size: 32 kD