



Rabbit Anti-MAdCAM-1 antibody

SL0642R

| | |
|-------------------------------|---|
| Product Name: | MAdCAM-1 |
| Chinese Name: | 粘膜血管定居因子抗体 |
| Alias: | Mucosal addressin cellular adhesion molecule-1; Addressin mucosal; hMAdCAM 1; MACAM1; Mucosal addressin cell adhesion molecule 1; Mucosal vascular addressin cell adhesion molecule 1; MADCA RAT. |
| Organism Species: | Rabbit |
| Clonality: | Polyclonal |
| React Species: | Human,Mouse,Rat, |
| Applications: | WB=1:500-2000ELISA=1:500-1000IHC-P=1:400-800IHC-F=1:400-800IF=1:100-500 (Paraffin sections need antigen repair) not yet tested in other applications. optimal dilutions/concentrations should be determined by the end user. |
| Molecular weight: | 40kDa |
| Cellular localization: | The cell membrane |
| Form: | Lyophilized or Liquid |
| Concentration: | 1mg/ml |
| immunogen: | KLH conjugated synthetic peptide derived from rat MAdCAM-1:151-250/394 |
| Lsotype: | IgG |
| Purification: | affinity purified by Protein A |
| Storage Buffer: | 0.01M TBS(pH7.4) with 1% BSA, 0.03% Proclin300 and 50% Glycerol. |
| Storage: | Store at -20 °C for one year. Avoid repeated freeze/thaw cycles. The lyophilized antibody is stable at room temperature for at least one month and for greater than a year when kept at -20°C. When reconstituted in sterile pH 7.4 0.01M PBS or diluent of antibody the antibody is stable for at least two weeks at 2-4 °C. |
| PubMed: | PubMed |
| Product Detail: | The protein encoded by this gene is an endothelial cell adhesion molecule that interacts preferentially with the leukocyte beta7 integrin LPAM-1 (alpha4beta7), L-selectin, and VLA-4 (alpha4beta1) on myeloid cells to direct leukocytes into mucosal and inflamed tissues. It is a member of the immunoglobulin family and is similar to ICAM1 and VCAM1. At least seven alternatively spliced transcripts encoding different protein |

isoforms have been found for this gene, but the full-length nature of some variants has not been determined. [provided by RefSeq, Jul 2008]

Function:

Cell adhesion leukocyte receptor expressed by mucosal venules, helps to direct lymphocyte traffic into mucosal tissues including the Peyer patches and the intestinal lamina propria. It can bind both the integrin alpha-4/beta-7 and L-selectin, regulating both the passage and retention of leukocytes (By similarity).

Subunit:

Homodimer (Probable).

Subcellular Location:

Membrane; Single-pass type I membrane protein.

Tissue Specificity:

Detected in Peyer patches and mesenteric lymph nodes but not in spleen.

Similarity:

Contains 3 Ig-like (immunoglobulin-like) domains.

SWISS:

O70540

Gene ID:

54266

Database links:

[Entrez Gene: 17123](#)Mouse

[SwissProt: Q61826](#)Mouse

[Unigene: 391556](#)Mouse

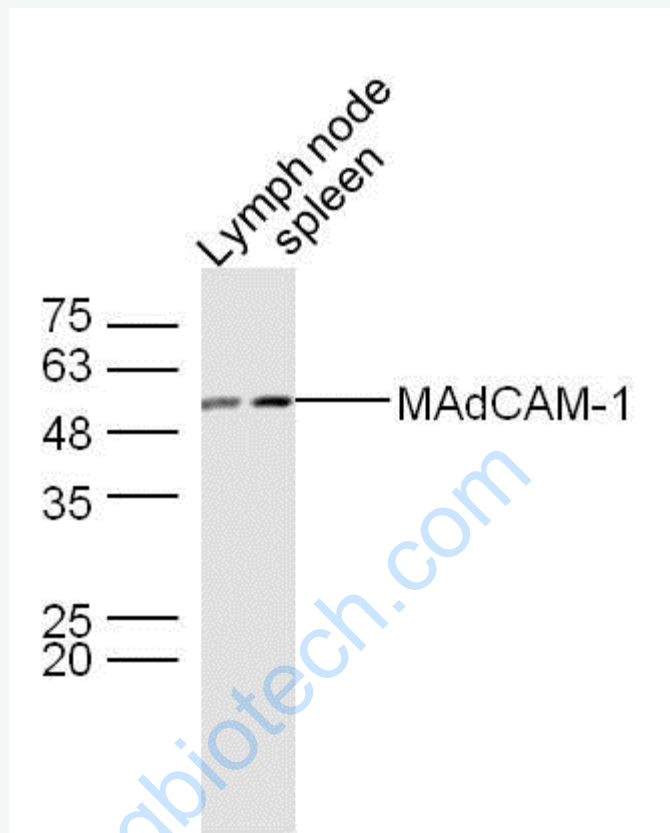
Important Note:

This product as supplied is intended for research use only, not for use in human, therapeutic or diagnostic applications.

MAdCAM-

1 (粘膜血管定居因子或黏膜地址素细胞黏附分子)、CD44等均参与癌症和Tumour细胞与血管内皮的相互作用, 与癌症和Tumour细胞一起穿过血管内皮而进入血管内, 参与血行播散转移。

Picture:



Sample:

Lymph node (Mouse) Lysate at 30 ug

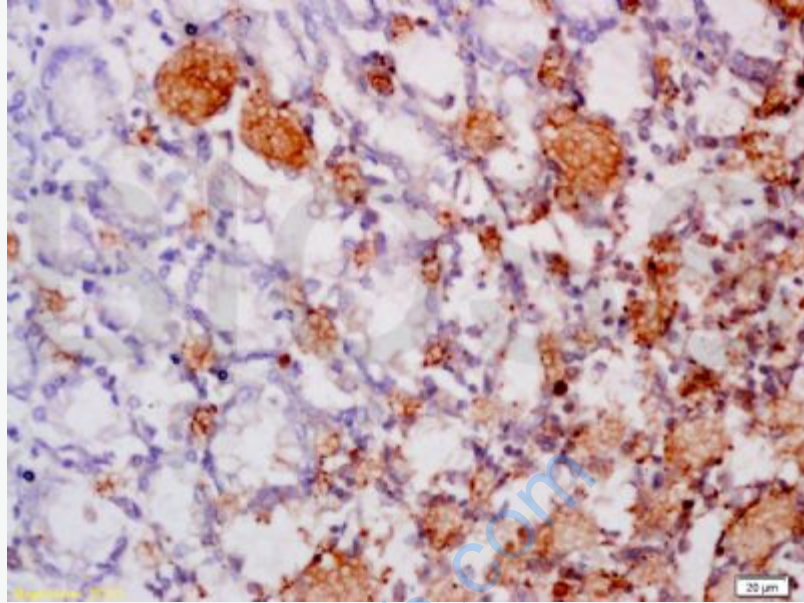
Spleen (Mouse) Lysate at 30 ug

Primary: Anti- MAdCAM-1 (SL0642R) at 1/300 dilution

Secondary: IRDye800CW Goat Anti-Rabbit IgG at 1/20000 dilution

Predicted band size: 40 kD

Observed band size: 50 kD



Tissue/cell: human gastric carcinoma; 4% Paraformaldehyde-fixed and paraffin-embedded;

Antigen retrieval: citrate buffer (0.01M, pH 6.0), Boiling bathing for 15min; Block endogenous peroxidase by 3% Hydrogen peroxide for 30min; Blocking buffer (normal goat serum,C-0005) at 37°C for 20 min;

Incubation: Anti-MAdCAM-1 Polyclonal Antibody, Unconjugated(SL0642R) 1:200, overnight at 4°C, followed by conjugation to the secondary antibody(SP-0023) and DAB(C-0010) staining